

1 LIFE SAFETY/ EGRESS PLAN
A1.0 3/16" = 1'-0"

GENERAL NOTES

- THE MINIMUM WIDTH OF EACH DOOR OPENING SHALL BE SUFFICIENT FOR THE OCCUPANT LOAD THEREOF AND SHALL PROVIDE A CLEAR WIDTH OF NOT LESS THAN 32 INCHES. THE HEIGHT OF DOORS SHALL NOT BE LESS THAN 80 INCHES.
 - EGRESS DOORS SHALL BE READILY OPERABLE FROM THE EGRESS SIDE WITHOUT THE USE OF A KEY OR ANY SPECIAL KNOWLEDGE OR EFFORT. ALL EGRESS DOORS TO HAVE PANIC HARDWARE.
 - EVERY ROOM OR SPACE THAT IS AN ASSEMBLY OCCUPANCY SHALL HAVE THE OCCUPANT LOAD OF THE ROOM OR SPACE POSTED IN A CONSPICUOUS PLACE, NEAR THE MAIN EXIT OR EXIT ACCESS DOORWAY FROM THE ROOM OR SPACE. POSTED SIGNS SHALL BE OF AN APPROVED LEGIBLE PERMANENT DESIGN AND SHALL BE MAINTAINED BY THE OWNER OR AUTHORIZED AGENT.
 - THE MEANS OF EGRESS, AND EXIT DISCHARGE, SHALL BE ILLUMINATED AT ANY TIME THE BUILDING IS OCCUPIED WITH A LIGHT INTENSITY OF NOT LESS THAN 1 FOOT-CANDLE AT THE WALKING SURFACE LEVEL.
 - GC TO PROVIDE ADA SIGNAGE PACKAGE AND INSTALL SIGNS AT LOCATIONS AND POSITIONS INDICATED IN PACKAGE OR AS REQUIRED BY LOCAL CODES. SIGNAGE PACKAGE SUPPLIED BY: FORREST PERMA-SIGN 1-800-214-8765 9292 1ST ST., BOX 588 www.forrestpermasigns.com NEW ROCHELLE, NY 10802
 - PORTABLE FIRE EXTINGUISHERS TO BE 5LB ABC, TRAVEL DISTANCE NOT TO EXCEED 75 FEET. EXISTING LIFE SAFETY EQUIPMENT TO REMAIN. CONTRACTOR TO COORDINATE FINAL LOCATION WITH LOCAL JURISDICTION.
- * EXISTING OCCUPANCY UNCHANGED

OCCUPANCY ALLOWANCE

| TABLE 1004.1.2 MAXIMUM FLOOR AREA ALLOWANCES PER OCCUPANT | | | |
|--|-----------|----------|-----------|
| FUNCTION OF SPACE | ALLOWANCE | AREA | OCCUPANTS |
| ACCESSORY STORE AREAS, MECHANICAL EQUIPMENT ROOM | 300 GROSS | 1093 | 4 |
| ASSEMBLY WITH FIXED SEATS/TABLES | SEE PLAN | - | 73 |
| ASSEMBLY WITHOUT FIXED SEATS (STANDING SPACE) | 5 NET | 35 | 7 |
| BUSINESS AREAS | 100 GROSS | 114 | 2 |
| KITCHENS, COMMERCIAL (BASED ON FULL KITCHEN STAFF) | - | SEE PLAN | 13 |
| TOTAL OCCUPANCY ALLOWANCE | | 99 | |
| TOTAL ADA SEATS REQUIRED (73 X .05) | | 4 | |

LIFE SAFETY LEGEND

- TRAVEL PATH
- START OF TRAVEL
- DIRECTION OF TRAVEL
- EMERGENCY LIGHT
- EXIT SIGN
- FIRE EXTINGUISHER

EGRESS LEGEND

- | | |
|---|----------------------------|
| A | OCCUPANT LOAD AT THIS EXIT |
| B | REQUIRED EXIT WIDTH |
| C | PROVIDED EXIT WIDTH |

ARCHITECT OF RECORD:
STATE OF MISSISSIPPI
KENNETH MACKEY
NUMBER
2017034870
04/18/18
ARCHITECT

PREPARED BY:
CORE STATES
GROUP
CORPORA, INC.
1700 Industrial Drive
Rogers, AR 72756
www.corestates.com

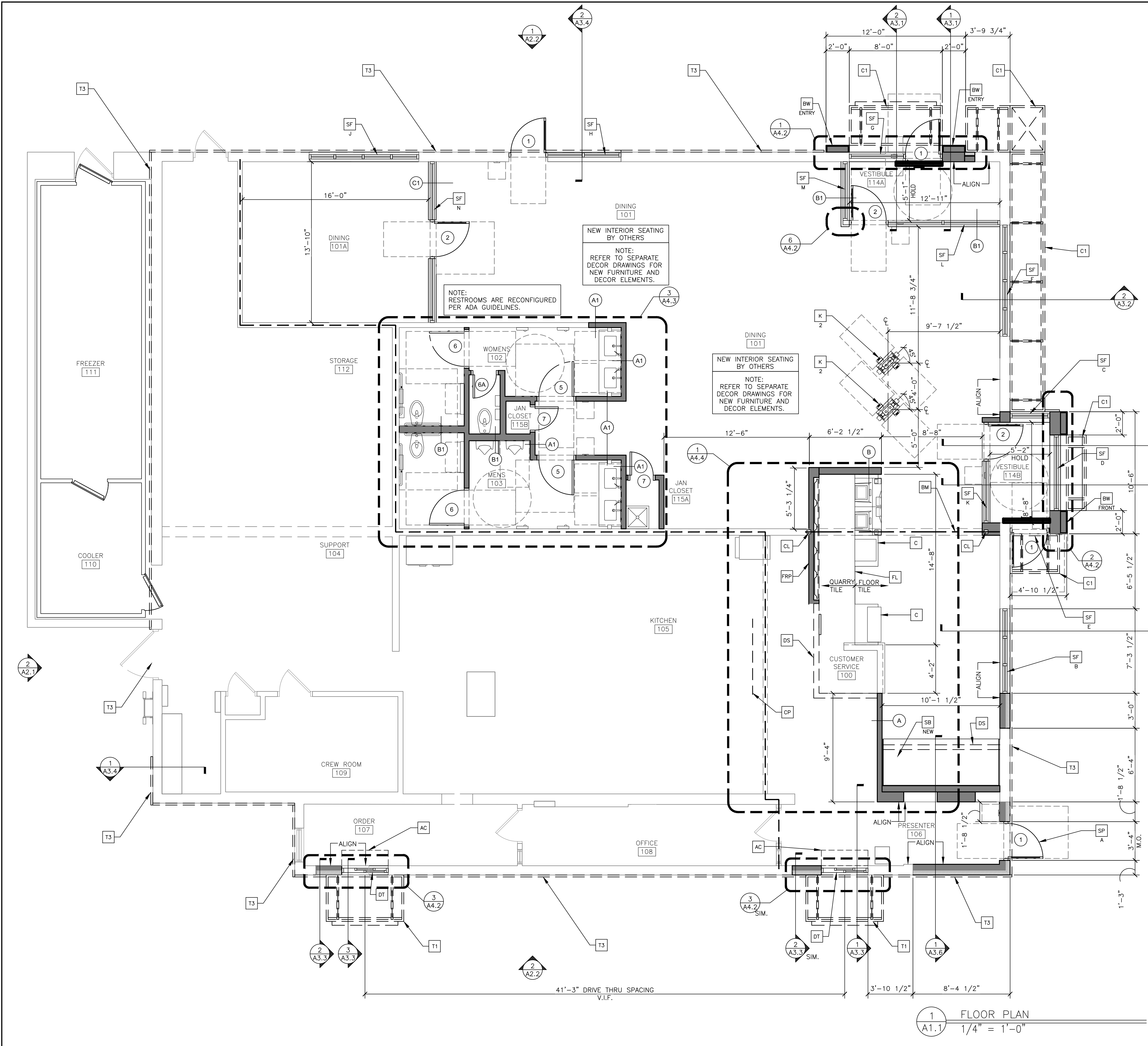
PREPARED FOR:
McDonald's USA, LLC
These drawings and specifications are the confidential and proprietary property of McDonald's USA, LLC and shall not be copied or reproduced without written authorization. The contractor acknowledges that these drawings are not suitable for use on a different site or at a later time. Use of these drawings for reference or example on another project requires the contractor to obtain the necessary permission from McDonald's USA, LLC. The contractor acknowledges that the use of these drawings for reference or example on another project is not authorized.

© 2019 McDonald's Corporation

DRAWN BY
K. SCHUPP
STD ISSUE DATE
MAY 2018
REVIEWED BY
BLOIS
DATE ISSUED
10/12/18
C.S.G. PROJECT #
MCD-24772

TITLE
MRP PROGRAM
CORE 16 2.0
DESCRIPTION
EXISTING MASONRY WALL CONSTRUCTION
EXISTING WOOD ROOF TRUSSES
TILE ARCADES - FRONT ENTRY
SITE ADDRESS
815 EASTLAND DRIVE
JEFFERSON CITY, MO 65101

SHEET NO.
A1.0
CODE ANALYSIS

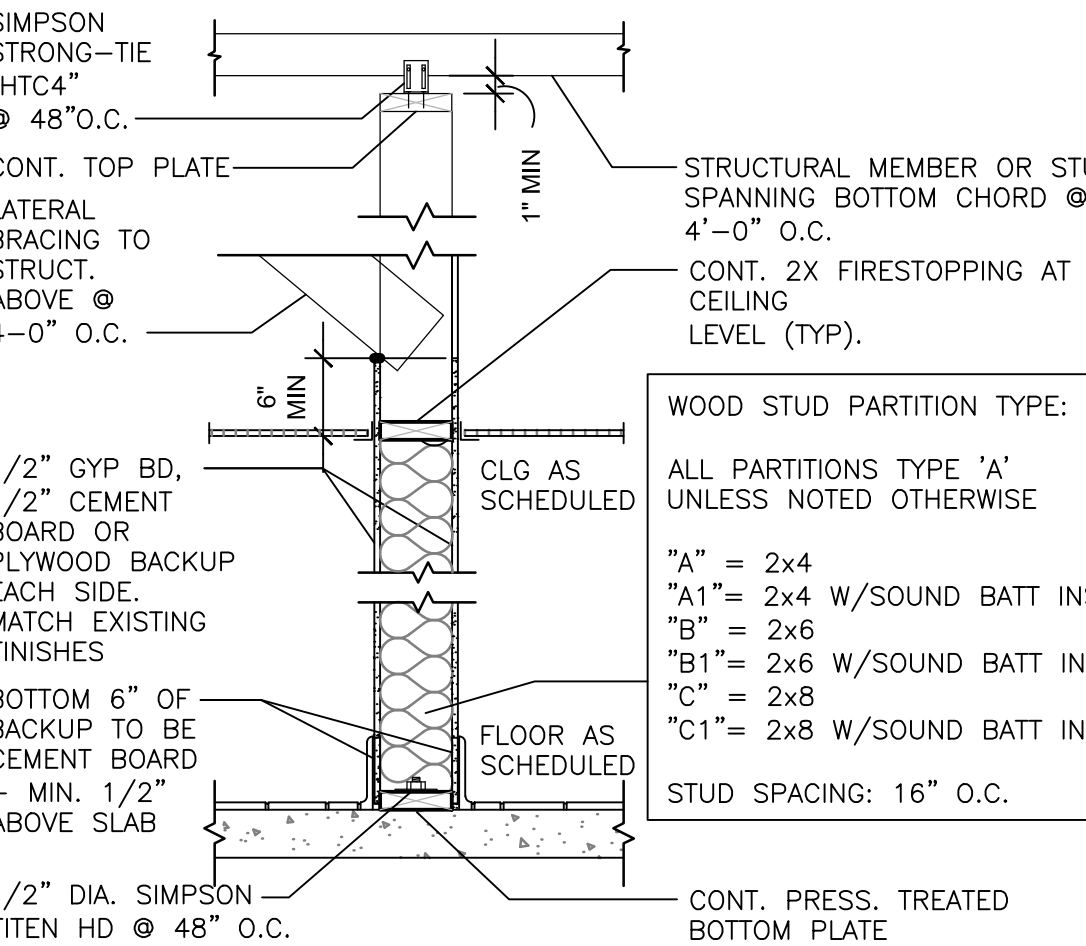


- GENERAL NOTES**
1. ALL DIMENSIONS ARE TO OUTSIDE FACE OF SUBSTRATE OR MASONRY UNLESS OTHERWISE NOTED (FIN = FINISHED DIMENSION). INTERIOR DIMENSIONS ARE TO FACE OF GYPSUM BOARD. SEE EXTERIOR ELEVATIONS FOR WINDOW TYPES.
 2. GC TO PROVIDE ADA SIGNAGE PACKAGE AND INSTALL SIGNS AT LOCATIONS AND POSITIONS INDICATED IN PACKAGE OR AS REQUIRED BY LOCAL CODES. SIGNAGE PACKAGE SUPPLIED BY:
FORREST PERMA-SIGN
9292 1ST STREET, BOX 588
NEW ROCHELLE, NY 10802
WWW.FORRESTPERMASIGNS.COM
(800)214-8765
 3. MAXIMUM OCCUPANCY SIGN TO BE POSTED PER LOCAL CODE. SIGN FURNISHED AND INSTALLED BY GENERAL CONTRACTOR
 4. ALL FRAMING LUMBER (SILL PLATES) IN CONTACT WITH CONCRETE SLAB SHALL BE PRESSURE TREATED IN ACCORDANCE WITH IBC
 5. ADJUST ALL PEDESTRIAN ENTRY/EXIT DOOR CLOSERS TO A MAXIMUM OF 5lbs. OPENING/CLOSING FORCE. IN ADDITION, ADJUST CLOSERS TO ACHIEVE A CLOSING TIME OF 5 SECONDS FROM 90 DEGREES TO 12 DEGREES. IF NOT ACHIEVABLE, REPLACE DOOR CLOSER
 6. GC TO COORDINATE ALL REQUIRED BLOCKING FOR WALL HUNG EQUIPMENT, SHELVES, ETC. FOR PROPER INSTALLATION HEIGHTS
 7. ALL HAND SINKS, VEGETABLE AND 3 COMP SINK ARE EXISTING TO REMAIN U.N.O.
 8. GC TO COORDINATE THE REMOVAL AND RELOCATION OF THE KITCHEN EQUIPMENT WITH THE KES AND ACM.
 9. REFERENCE THE KITCHEN PLANS FOR FINAL LOCATION OF THE KITCHEN EQUIPMENT.
 10. GC TO COORDINATE ALL FINISHES WITH THE ACM.
 11. PREPARE ALL EXPOSED SURFACES AND STRUCTURE FOR APPLICATION OF FINISH SUBSTRATE.
 12. REMOVE ALL DEBRIS FROM BUILDING & SITE DISPOSE OF IN ACCORDANCE W/ STATE & LOCAL CODES.
 13. PROVIDE TEMPORARY SUPPORT & BRACING AT ALL WALLS DURING DEMOLITION.
 14. ALL NEW HAND SINK LOCATIONS SHALL HAVE CEMENT BOARD BACKING 48" IN HEIGHT A.F.F.
 15. COORDINATE EXISTING AND NEW POWER PANEL LOCATIONS WITH ELECTRICAL DRAWINGS AND ACM.
 16. ALL PLYWOOD SHALL BE FIRE RETARDANT TREATED.

- KEYNOTES**
- [BW] BRAND WALL
 - [REAR] FRONT ENTRY D/T REAR
 - [C] NEW MODULAR FRONT COUNTER BY OTHERS
 - [CP] CURATED VIEW PANEL
 - [C1] ALUMINUM CANOPY BY OTHERS, SEE A2 & A3 SERIES
 - [DS] DROPPED SOFFIT
 - [DT] DRIVE-THRU WINDOW; SEE A2 SERIES & A5.1 FOR WINDOW TAG & TYPE
 - [FL] FLOOR LINE - CHANGE IN MATERIAL
 - [FRP] FIBERGLASS REINFORCED PLASTIC. SEE SHT. A4.4
 - [K] ORDERING KIOSK COORDINATE THE EXACT LOCATION WITH THE McDONALD'S AREA CONSTRUCTION MANAGER. REFERENCE THE KIOSK AND PUCK GUIDELINES ON SHEET GN1.0
 - [RL] EXISTING ROOF LADDER TO REMAIN.
 - [SB] EXISTING SELF SERVE BEVERAGE BAR. REFER TO PLUMBING DRAWINGS
 - [SF] STOREFRONT SYSTEM TO MATCH EXISTING; SEE A2 SERIES FOR EXTERIOR ELEVATIONS & A5.1 FOR WINDOW TYPES.
 - [T1] ALUMINUM TRELLIS SYSTEM ABOVE - SEE ROOF PLAN
 - [T3] ALUMINUM TRELLIS 2X8 WALL FASCIA ABOVE - SEE ROOF PLAN

LEGEND

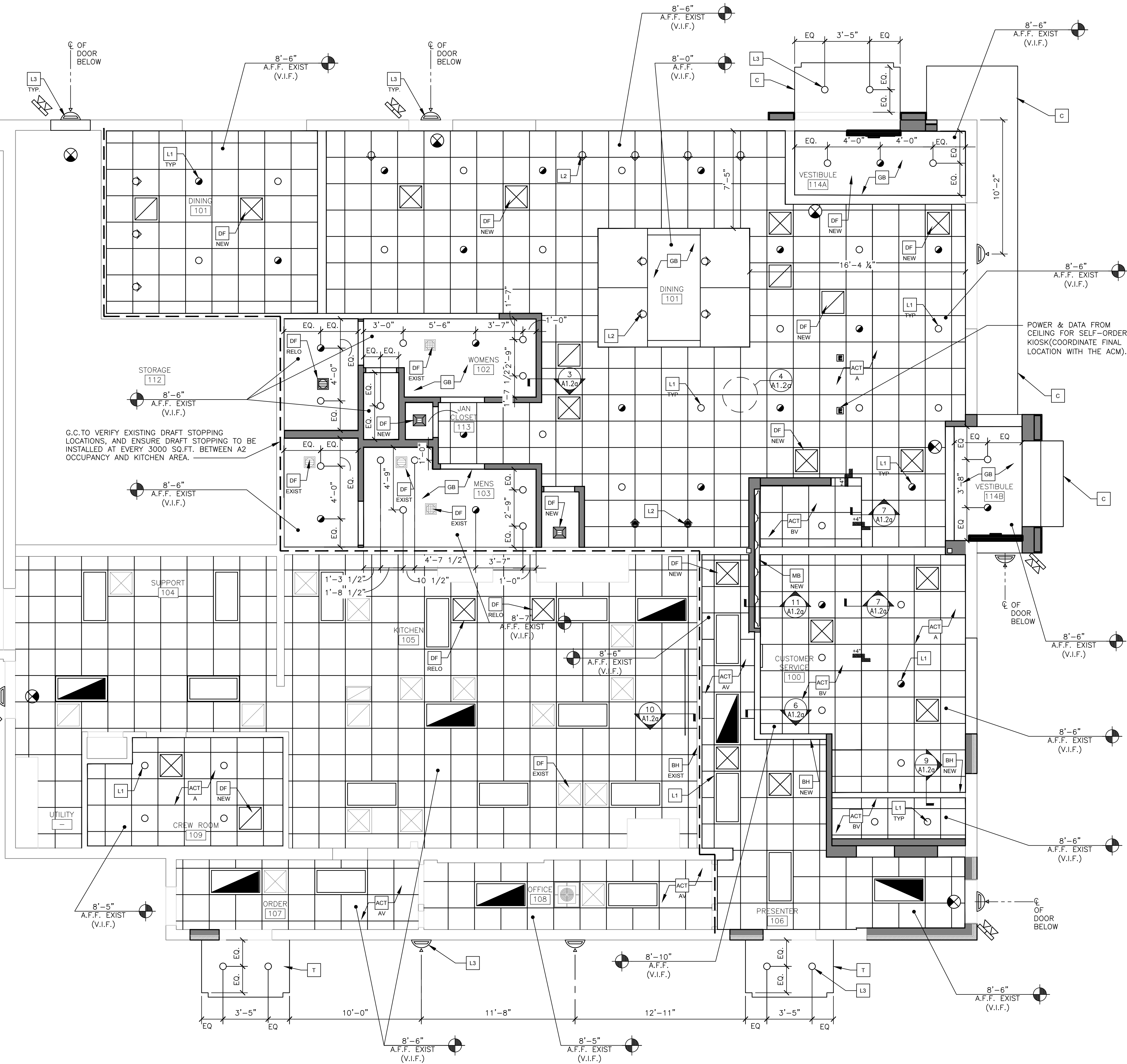
- (B) PARTITION TYPE TAG SEE 2/A1.1
- (7) DOOR TAG - SEE DOOR & HARDWARE SCHEDULE ON A5.1
- (X) KEY NOTE
- [NEW WALL CONSTRUCTION]
- [TILE VENEER]
- [EXISTING CONSTRUCTION]
- [BRICK VENEER]



2
A1.1
INTERIOR PARTITION
3/4" = 1'-0"
WOOD FRAMING

| | | | |
|----------------------|----------------------------|--|---|
| ARCHITECT OF RECORD: | | STATE OF MISSOURI KENTON L. MACDONALD REGISTERED ARCHITECT NUMBER K-2017034870 04/18/19 | |
| PREPARED BY: | | CORE STATES GROUP CONSULTANTS, INC. 1000 Walnut Drive Suite 800, St. Louis, MO 63101 www.corestatesgroup.com | |
| PREPARED FOR: | | © 2019 McDonald's Corporation McDonald's USA, LLC These drawings and specifications are the confidential and proprietary property of McDonald's USA, LLC and shall not be copied or reproduced without written authorization. The contract documents were prepared for use on this specific site in conjunction with its issue date, and are not to be used for any other project. Reproduction of these drawings for reference or example on another project requires the services of properly licensed architects and engineers. Reproduction of the contract documents for reuse on another project is not authorized. | |
| DRAWN BY: | K.SCHOPP | STD ISSUE DATE: | MAY 2018 |
| REVIEWED BY: | BLOSURS | DATE ISSUED: | 10/12/18 |
| CHECKED BY: | C.S. (P) 037 | PROJECT NO.: | INC-24772 |
| TITLE: | MRP PROGRAM CORE 16 2.0 | DESCRIPTION: | EXISTING MASONRY WALL CONSTRUCTION EXISTING WOOD ROOF TRUSSES TILE ARCADES FRONT ENTRY |
| SHEET NO.: | A1.1 FLOOR PLAN | | |

- CREW ROOM NOTE**
- REPLACE CEILING TILES AND GRID AS SPECIFIED ON SEPARATE DECOR DRAWINGS. COLOR: PER THE ACM.
 - SEE SEPARATE DECOR DRAWINGS FOR FINAL CEILING CONFIGURATION & DETAILS.
- CEILING NOTE**
- SEE DETAIL 8/A1.2g FOR MONITOR INSTALLATION INFORMATION
- RESTROOM NOTE**
- PATCH/REPAIR EXISTING CEILING DAMAGED FROM DEMOLITION, IN KIND
 - REPLACE EXISTING FLUORESCENT LIGHTING WITH RECESSED CANS
 - RELOCATE EXISTING DIFFUSERS TO COORDINATE WITH NEW LIGHTING LAYOUT
- DINING NOTE**
- REPLACE CEILING TILES AND GRID AS SPECIFIED ON SEPARATE DECOR DRAWINGS. COLOR: PER THE ACM.
 - NEW LIGHT FIXTURES TO CONNECT TO EXISTING CIRCUITRY
 - SEE SEPARATE DECOR DRAWINGS FOR FINAL CEILING CONFIGURATION & DETAILS.
- DECOR NOTE**
- FINAL DECOR PLANS BY OTHERS. COORDINATE ALL FIXTURE LOCATIONS AND CEILING HEIGHTS WITH DECOR AND ACM.



GENERAL NOTES

- EXISTING EMERGENCY LIGHTING CONFIGURATION TO REMAIN, UNLESS OTHERWISE NOTED.
- CEILING PLAN PROVIDED FOR PERMITTING PURPOSES ONLY. PLEASE REFER TO DECOR DRAWINGS, UNDER SEPARATE COVER, FOR FINAL CEILING PLAN AND LIGHTING LOCATION.
- RELOCATE EXISTING CEILING MOUNTED AIR DEVICES TO ACCOMMODATE DECOR CHANGES. CONTRACTOR SHALL EXTEND DUCT, AS REQUIRED, TO MAKE FINAL CONNECTIONS.

KEYNOTES (NOT ALL KEY NOTES MAY BE USED)

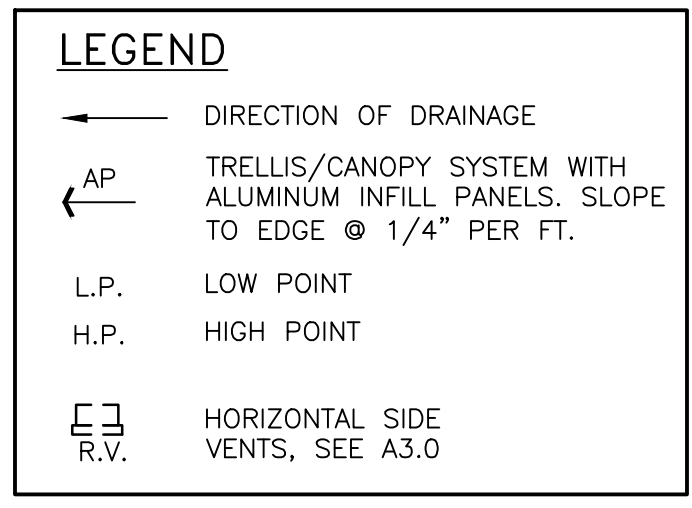
- ACT A** NEW ACOUSTICAL CEILING TILE — COORDINATE WITH THE McDONALD'S AREA CONSTRUCTION MANAGER FOR FINISHES
- ACT AV** ACOUSTICAL CEILING TILE — VINYL FACED COLOR: WHITE — SEE ROOM FINISH SCHEDULE. MATCH EXISTING CEILING
- ACT B** ACOUSTICAL CEILING TILE: USG 24"x24" PREMIER HI-LITE CLIMAPLUS KAPOK PANELS. UNPERFORATED COLOR: FLAT BLACK 205 GRID: USG 15/16" DX/DXL COLOR: BLACK
- ACT BV** ACOUSTICAL CEILING TILE: VINYL FACED USG 24"x24" PREMIER HI-LITE CLIMAPLUS KAPOK PANELS. UNPERFORATED COLOR: FLAT BLACK 205 GRID: USG 15/16" DX/DXL COLOR: BLACK
- BH XX** BULKHEAD FRAMING; SEE DETAILS ON A4.4
- "EXIST" FOR WHERE OCCURS
- C** CANOPY SYSTEM; SEE A1.1 & A1.3 FOR TYPE & LOCATION.
- CT** WALL TILE — COORDINATE WITH THE McDONALD'S AREA CONSTRUCTION MANAGER FOR FINISHES
- CP** CURATED PANEL, SEE A4.4
- DF XX** G.C. TO VERIFY WITH OWNER TO REPLACE/RE-Paint, ETC. LAY-IN DIFFUSER COLOR: MATCH ADJACENT CEILING.
- "EXIST" WHERE OCCURS
- GB** GYPSUM CEILING; SEE DETAILS ON 3/A1.2a & SEPARATE DECOR PACKAGE; MATCH EXISTING WHERE OCCURS.
- L1** LIGHT: TIE INTO EXISTING LIGHTING CIRCUITRY. VERIFY SWITCHING REQUIREMENTS W/OWNER. CONTRACTOR TO VERIFY LOAD ON EXISTING CIRCUITRY DOES NOT EXCEED MAXIMUM RATING. NOTIFY ARCHITECT OF ANY CONFLICTS. CENTER FIXTURES IN CENTER OF ACOUSTICAL CEILING TREATMENT, U.N.O. CONTRACTOR SHALL PROVIDE SUFFICIENT EM LIGHTING & ASSOCIATED LED INVERTERS FOR EGRESS LIGHTING PER LIFE SAFETY/NIGHTLIGHTING AT FRONT COUNTER AREA. V.I.F.
- L2** NEW LIGHT PER DECOR TO TIE INTO EXISTING LIGHT CIRCUITRY. SEE ELECTRICAL.
- L3** NEW EXTERIOR LIGHTING TO TIE INTO EXISTING CIRCUITRY, SEE ELECTRICAL.
- MB** MENU BOARD WITH BEZELS BY OTHERS UNDER SEPARATE PERMIT — SEE ELEC PLANS
- T** TRELLIS SYSTEM; SEE A1.1 & A1.3 FOR TYPE & LOCATION.

LEGEND

- 2'X2' MECHANICALLY SUSPENDED ACOUSTIC CEILING TILE (ACT)
- RECESSED LED DOWNLIGHT
- SUPPLY AIR DIFFUSER
- RETURN AIR DIFFUSER
- PENDANT LIGHT, REFER TO SEPARATE DECOR DRAWINGS
- DUAL HEAD EMERGENCY LIGHT
- EXIT SIGN
- 4'X2' MECHANICALLY SUSPENDED ACOUSTIC CEILING TILE (ACT)
- DRUM PENDANT
- WALLWASH
- TUBE PENDANT
- WALL SCONCE (DOWN LIGHT ONLY)
- LINE OF DRAFT STOPPING ABOVE

1 REFLECTED CEILING PLAN
A1.2 1/4" = 1'-0"

| | | | | | | | | | | | | | | | |
|----------------------|--|----------------------|--|--------------------|--|------------------|--|------------------------------------|--|----------------------------|--|----------------------------|--|--------------|--|
| ARCHITECT OF RECORD: | | STATE OF MISSISSIPPI | | KENTON MACDONALD | | NUMBER | | 42017034870 | | DATE | | REV | | BY | |
| PREPARED BY: | | CORE STATES | | GROUP | | CORPORATE, INC. | | 1700 Insulated Drive | | Rogers, AR 72756 | | www.corestates.com | | | |
| DRAWN BY: | | K. SCHOPP | | STD ISSUE DATE | | MAY 2018 | | REVIEWED BY: | | B. LOGSUNS | | DATE ISSUED | | 10/12/18 | |
| TITLE | | MRP PROGRAM | | CORE 16 2.0 | | DESCRIPTION | | EXISTING MASONRY WALL CONSTRUCTION | | EXISTING WOOD ROOF TRUSSES | | TILE ARCADES - FRONT ENTRY | | SITE ADDRESS | |
| SHEET NO. | | A1.2 | | REFL. CEILING PLAN | | C.S.G. PROJECT # | | MCD-24772 | | JEFFERSON CITY, MO 65101 | | 815 EASTLAND DRIVE | | 024-0294 | |



2 ROOFING ASSEMBLY
A1.3 1/4" = 1'-0"

| | |
|----------------------|---|
| SHEET NO. | A1.3 |
| TITLE | MRP PROGRAM CORE 16 2.0 |
| DRAWN BY | K.SCHOPP |
| STD ISSUE DATE | MAY 2018 |
| DESCRIPTION | EXISTING MASONRY WALL CONSTRUCTION EXISTING WOOD ROOF TRUSSES |
| TILE ID | TILE ARCADES - FRONT ENTRY |
| SITE ADDRESS | 815 EASTLAND DRIVE |
| C.D.# PROJECT # | MCD-24772 |
| REVIEWED BY | B.L.CURJIS |
| DATE ISSUED | 10/12/18 |
| ARCHITECT OF RECORD: | STATE OF MISSISSIPPI KEYNOTE ARCHITECTURE NUMBER K-2017034870 04/18/19 |
| REV | |
| DATE | |
| DESCRIPTION | |
| BY | |