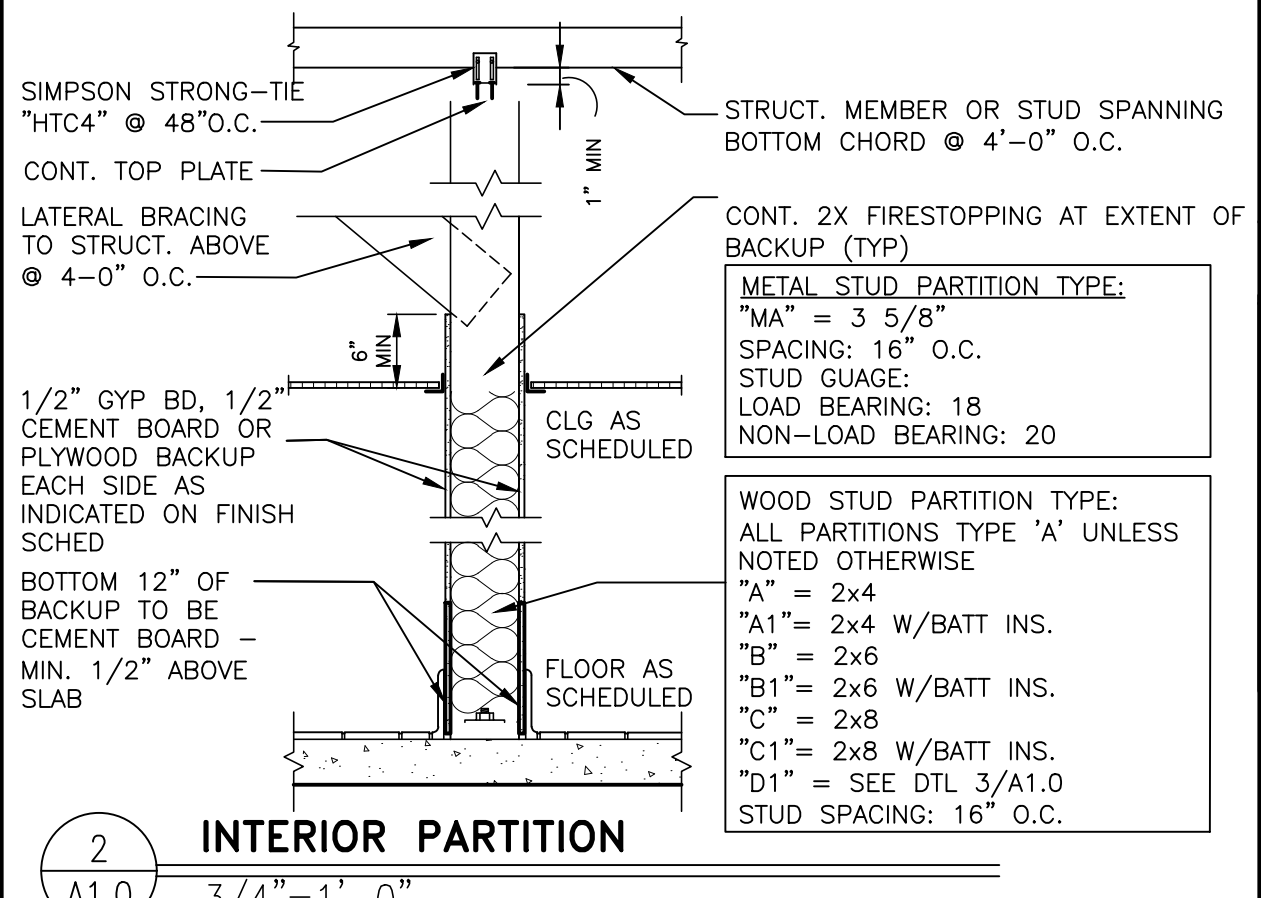


FLOOR TILE SCHEDULE

ROOM NAME	FLOOR	BASE	MORTAR SETTING BED	GROUT
100 CUSTOMER SERVICE	PORCELAIN FLOOR TILE (NOTE 1)	NONE - WALL TILE	LATEX-PORTLAND CEMENT THIN SET (MEDIUM BED)	HIGH PERFORMANCE CEMENT GROUT
101 DINING	PORCELAIN FLOOR TILE (NOTE 1)	NONE - WALL TILE	LATEX-PORTLAND CEMENT THIN SET (MEDIUM BED)	HIGH PERFORMANCE CEMENT GROUT
102 WOMEN'S TOILET	PORCELAIN FLOOR TILE (NOTE 1)	NONE - WALL TILE (NOTE 2A)	LATEX-PORTLAND CEMENT THIN SET (MEDIUM BED)	HIGH PERFORMANCE CEMENT GROUT
103 MEN'S TOILET	PORCELAIN FLOOR TILE (NOTE 1)	NONE - WALL TILE (NOTE 2A)	LATEX-PORTLAND CEMENT THIN SET (MEDIUM BED)	HIGH PERFORMANCE CEMENT GROUT
114 VESTIBULE	PORCELAIN FLOOR TILE (NOTE 1)	NONE - WALL TILE (NOTE 2A)	LATEX-PORTLAND CEMENT THIN SET (MEDIUM BED)	HIGH PERFORMANCE CEMENT GROUT
115 PLAYPLACE	PORCELAIN FLOOR TILE (NOTE 1)	NONE - WALL TILE (NOTE 2A)	LATEX-PORTLAND CEMENT THIN SET (MEDIUM BED)	HIGH PERFORMANCE CEMENT GROUT

TILE NOTES

- REFERENCE: 2013 McDONALD'S PROJECT MANUAL - SECTION 09300
FLOOR TILE:
MAIN & ACCENT: 6"x36", 12"x24" OR 13"x20" (SIZE & SERIES MAY VARY). USE ONLY APPROVED TILE SERIES AND COLORS BY DALTILE, CROSSVILLE & EUROWEST. VERIFY COLOR AND PATTERN PER INTERIOR DECOR DRAWINGS.
A) MUST BE PER McDONALD'S USA: STANDARDS FOR INTERIOR FLOOR TILE & APPROVED TILE LIST.
B) MUST BE NO LARGER THAN 6"x36", 12"x24" OR 13"x20".
C) MUST MEET THE FOLLOWING:
STATIC COEFFICIENT OF FRICTION (PER ASTM F1667-96)
LEVEL SURFACES: MINIMUM 0.50 DRY AND WET (McDONALD'S STANDARD)
DYNAMIC COEFFICIENT OF FRICTION (PER ANSI A137.1 2012)
LEVEL SURFACES: MINIMUM 0.5 DRY AND WET (McDONALD'S STANDARD)
TILE TRANSITION AND EDGE PROTECTION:
A) TILE BASE (RESTROOM ONLY): SCHLUTER DILEX-AHK SERIES, BRUSHED STAINLESS STEEL.
B) TILE EDGE PROTECTION (WALL TRANSITION): SCHLUTER-RONDEC-DB, SATIN ANODIZED ALUM.
C) TILE CORNER PROTECTION (OUTSIDE CORNER): SCHLUTER-RONDEC-AE, SATIN ANODIZED ALUM.
D) SEE INTERIOR DECOR DRAWINGS FOR ALL LOCATIONS.
- BEFORE FINAL INSPECTION
REMOVE PROTECTIVE COVERINGS AND PERFORM FINAL CLEANING.
TILE CLEANER: DETERDEK, BY FILA SURFACE CARE PRODUCTS - NO SUBSTITUTIONS ALLOWED CAN BE ORDERED BY EUROWEST, DALTILE, OR DIRECT FROM MANUFACTURER: FILA/ETEREK
POST INSTALLATION CLEANING REQUIRED ON ALL FLOOR TILE INSTALLATIONS PRIOR TO RESTAURANT TURN OVER. APPLY CLEANER PER MANUFACTURER'S WRITTEN INSTRUCTIONS.
REFERENCE: 2013 McDONALD'S PROJECT MANUAL - SECTION 09300 TILING INTERIOR.
- GROUT COLOR AND MANUFACTURER AS INDICATED ON SHEET A1.0 AND INTERIOR DECOR DRAWINGS.



GENERAL NOTES

- SEE 6/A3.0 FOR EXTERIOR WALL ASSEMBLY TYPES.
- SEE EXTERIOR ELEVATIONS FOR WINDOW TYPES
- SEE SITE PLAN FOR SIDEWALKS, RAMPS, ETC.
- GC TO PROVIDE ADA SIGNAGE PACKAGE AND INSTALL SIGNS AT LOCATIONS AND POSITIONS INDICATED IN PACKAGE OR AS REQUIRED BY LOCAL CODES. SIGNAGE PACKAGE SUPPLIED BY: FORREST PERMA-SIGN
1-800-214-8765
9292 1ST ST., BOX 588
ROCHELLE, NY 10802
www.forrestpermasigns.com NEW

SYMBOL LEGEND

- 7 DOOR TAG - SEE DOOR SCHEDULE
X KEY NOTE
A PARTITION TYPE
- NEW EXTERIOR WALL
NEW INTERIOR WALL
NEW INTERIOR WALL

KEY NOTES

- (N) SEATING BY DECOR, UNDER SEPARATE PERMIT
- (N) MODULAR FRONT COUNTER, SEE DECOR DWGS.
- (N) WALL INFILL AT (E) WINDOW OPENING
- (N) FINISHES AT THE SSBB, SEE DECOR DRAWINGS FOR FINISHES.
- (N) FLOOR FINISHES, SEE DECOR DRAWINGS FOR MORE INFORMATION
- (N) ALUMINUM CANOPY SYSTEM ABOVE - SEE ROOF PLAN FOR DIMENSIONS
- (N) TRELLIS SYSTEM ABOVE - SEE 8/A5.0 FOR NOTES - SEE ROOF PLAN FOR DIMENSIONS
- (N) STOREFRONT SYSTEM - SEE 8/A5.0 FOR NOTES - SEE ELEVATIONS
- (N) ASSISTANCE SIGN #1002 AT EACH SELF SERVICE AREA IN A LOCATION EASILY VISIBLE BY CUSTOMER, SEE DETAIL 12/SD1
- (N) ASSISTANCE SIGN #779 AT CUSTOMER SERVICE COUNTER, SEE DETAIL 16/SD1
- (N) ISA DIRECTIONAL SIGNAGE, SEE DETAIL 5/CV2
- (N) ISA ENTRANCE SIGNAGE, SEE DETAIL 20/SD1
- PROVIDE RAISED CHARACTER & BRAILLE SIGN @ EA. EXIT DOOR DEFINED WITH AN OVERHEAD ILLUMINATED EXIT SIGN. MOUNT CENTERLINE OF SIGN 60" A.F.F.
- OCCUPANT LOAD SIGN (TYP. OF 2) TO INDICATE 93 PEOPLE. CONFIRM LOCATION WITH CONSTRUCTION MANAGER.
- (E) GAS METER, PROTECT IN PLACE DURING CONSTRUCTION.
- (E) ROOF LADDER PAINTED TO MATCH ADJACENT BUILDING FINISH, SEE ELEVATIONS.
- (E) GUARDRAIL PAINTED TO MATCH "CITYSCAPE".
- (N) ADA RESTROOM SIGNAGE - SEE DETAIL 17/AS2.
- (N) STOREFRONT DOOR AS REQUIRED
- (N) INFORMATIONAL SIGN FOR SPEECH/HEARING, SEE DETAIL 4/SD1
- (N) PLAY PLACE TOY AND SOFT SURFACE MATERIAL BY OTHERS
- (N) SIGNAGE BY OTHERS. SEE ELEVATIONS
- (N) CREW ROOM FURNITURE, SEE DECOR
- (N) KNOX BOX, MOUNTING HEIGHT SHALL NOT BE HIGHER THAN 5'-0" A.F.F. TO TOP OF THE BOX
- GC TO ASSESS CONDITION OF FLOOR TILES WITHIN STORAGE AREA IN FIELD. ALL DAMAGED FLOOR TILES TO BE REMOVED AND REPLACED WITH MORE DURABLE TILES PER McDONALD'S STANDARDS. INSTALL NEW TILES PER MANUFACTURER'S SPECIFICATIONS.

Stantec

Stantec Architecture Inc. | Tel. 312.554.1400
224 S. Michigan Ave. | Fox 312.554.1412
Chicago, IL U.S.A. 60604 | www.stantec.com

McDonald's USA, LLC

These drawings and specifications are the confidential and proprietary information of McDonald's USA, LLC. They are to be used only for the project and site identified herein. No part of these drawings or specifications may be reproduced or transmitted in any form or by any means electronic, mechanical, photocopying, recording, or by any information storage and retrieval system, without the prior written authorization of McDonald's USA, LLC. Use of these drawings or specifications for any other project is strictly prohibited. Reproduction of these drawings or specifications for any other project is strictly prohibited. The contract documents for reuse on another project is not authorized.

STATE OF MISSOURI

ARCHITECT

BRAND REVIEW

PLANNING

PERMIT

BID

CONSTRUCTION

DRAWING TITLE:

FLOOR PLAN

PROJECT ADDRESS:

16802 E. GUDGELL RD
INDEPENDENCE, MO 64055

PROJECT CAD FILE:

2014047056

STATE SITE CODE:

024-0180

DRAWN BY:

SHEET NO.

A1.0

REVISION PER DECOR DRAWINGS

DATE

REV

1

11/26/19

DESCRIPTION

BY

JW