

GAS DEMAND SCHEDULE	
RTU-1	180 CFH
RTU-2	260 CFH
WH-1	199 CFH
WH-2	199 CFH
DOUBLE FRYER	110 CFH
RE THERMALIZER	110 CFH

TOTAL DEMAND  
BASIS OF DESIGN

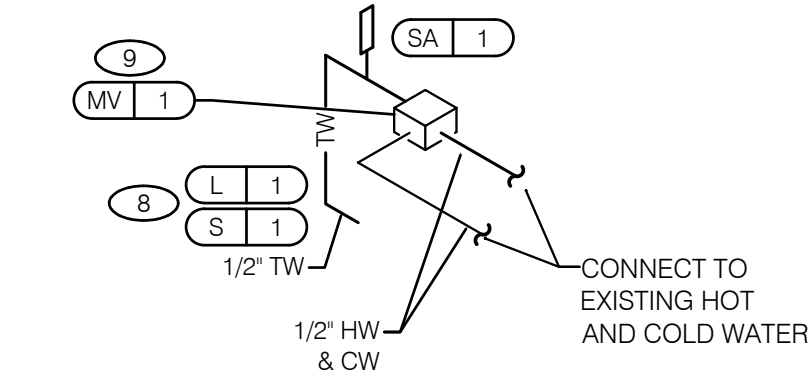
1058 CFH = 1058,000 BTUH

NOTE:

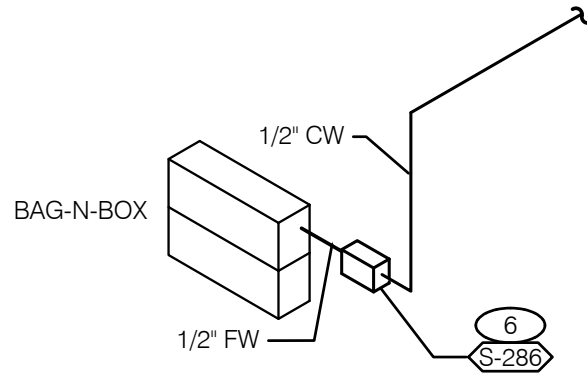
COORDINATE GAS DEMAND REQUIREMENTS  
AND PIPE SIZING WITH SITE-SPECIFIC RTU  
DESIGN.

PIPE SIZE BASED ON 135' OF PIPE AND  
7" W.C.

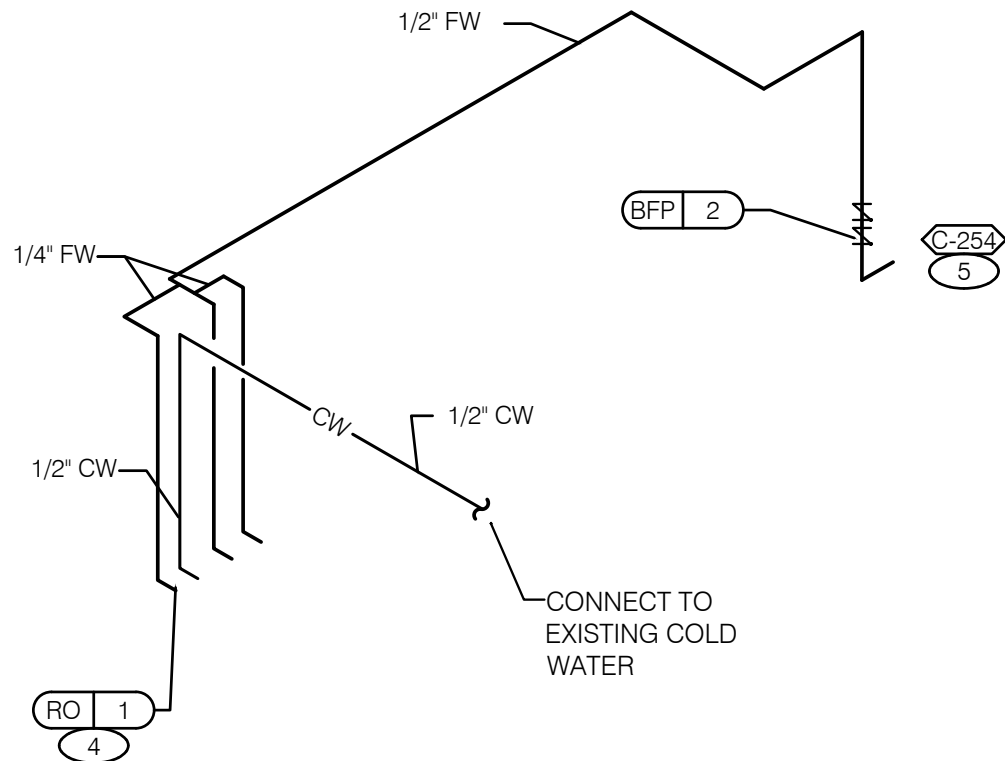
GAS ISOMETRIC N.T.S. 3



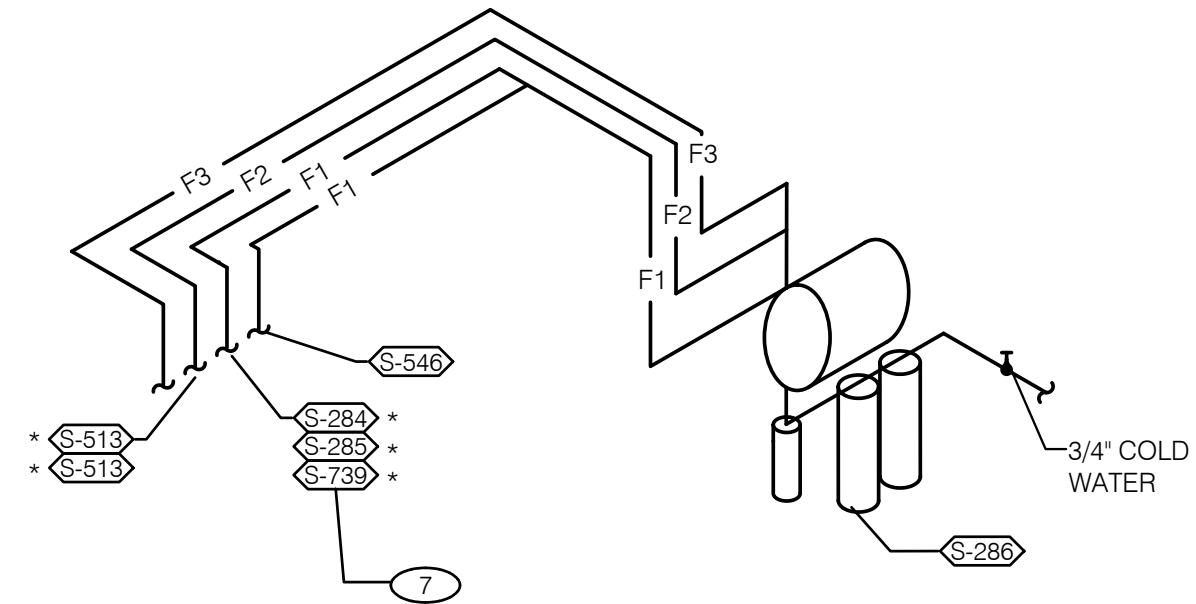
TYP. HAND SINK & LAVATORY ISOMETRIC N.T.S. 6



BAG IN BOX ISOMETRIC N.T.S. 5



REVERSE OSMOSIS ISOMETRIC N.T.S. 4



- FILTERED EQUIPMENT AND LINES:**
- S-286 - WATER FILTER
- FILTERED LINE (COLD WATER)**
- S-513 - ICE MAKER - ABOVE SELF-SERVE BEVERAGE DISPENSER \*
  - S-513 - ICE MAKER - ABOVE DRIVE-THRU BEVERAGE DISPENSER \*
  - S-283 - DRIVE-THRU BEVERAGE DISPENSER \*
  - S-284 - SELF-SERVE BEVERAGE DISPENSER \*
  - S-546 - ICED TEA BREWER
  - S-739 - FROZEN BEVERAGE DISPENSER \*

\* FILTERED WATER SUPPLIED VIA SYRUP BUNDLE. REFER TO 7/P6.0. SEE SCOPE OF WORK FOR RESPONSIBILITIES.

FILTERED WATER ISOMETRIC N.T.S. 2

- EMERGENCY GAS SHUT-OFF VALVE (NORMALLY CLOSED) SHALL BE ELECTRIC SOLENOID TYPE WITH SPRING RETURN AND 24 VOLT ACTUATOR, SUITABLE FOR USE ON GAS PIPING SYSTEMS. VALVE SHALL BE ACTIVATED BY ANY OF THE EXHAUST HOOD FIRE SUPPRESSION SYSTEM. PROVIDE RELAYS AS REQUIRED TO ACTIVATE SHUT-OFF VALVE.
- FACTORY GAS PIPING AT ROOF TOP UNIT FOR THROUGH THE BASE PIPE CONNECTION. SHUT-OFF VALVE SHALL BE LOCATED OUTSIDE OF THE UNIT.
- GAS SHUT-OFF VALVE IN CEILING SPACE BY G.C.
- 1/2" COLD WATER CONNECT TO REVERSE OSMOSIS FILTER AND 1/2" FILTERED WATER FROM REVERSE OSMOSIS FILTER. PROVIDE SHUT-OFF ON CW PIPE PRIOR TO CONNECTION TO FILTER.
- 1/2" FILTERED WATER FROM REVERSE OSMOSIS FILTER DOWN IN UTILITY CHASE OF M.A.P.S. LINE. PROVIDE SHUT-OFF VALVE ON FW PIPE IN CEILING NEAR UTILITY CHASE.
- 1/2" COLD WATER TO WATER FILTER SYSTEM. REFERENCE DETAIL 2/P4.0 FOR FILTERED WATER RISER.
- TEE OFF 3/8" LINE FROM DRIVE THRU BEVERAGE DISPENSER FILTERED WATER SUPPLY. SEE DETAIL 10/P5.0.
- 1/2" TEMPERED WATER DOWN IN WALL TO HAND SINK / LAVATORY.
- THERMOSTATIC MIXING VALVE. SEE DETAIL 11/P5.0

BC PROJECT #: 20317  
MISSOURI PE COA #2009003629

This drawing has been prepared by the Engineer, or under his supervision. This drawing is provided as an instrument of service by the Designer/Engineer and is intended for use on this project only. Pursuant to the Architectural Works Copyright Protection Act of 1990, all drawings, specifications, ideas and designs, including the overall form, arrangement and composition of spaces and elements appearing herein, constitute the original, copyrighted work of the Designer/Engineer. Any reproduction, use, or disclosure of information contained herein without prior written consent of the Engineer is strictly prohibited. © 2019 BC Engineers, Inc.

BC ENGINEERS  
INCORPORATED

5720 Reed Road, Suite 103, St. Louis, MO 63112 (314) 262-1771