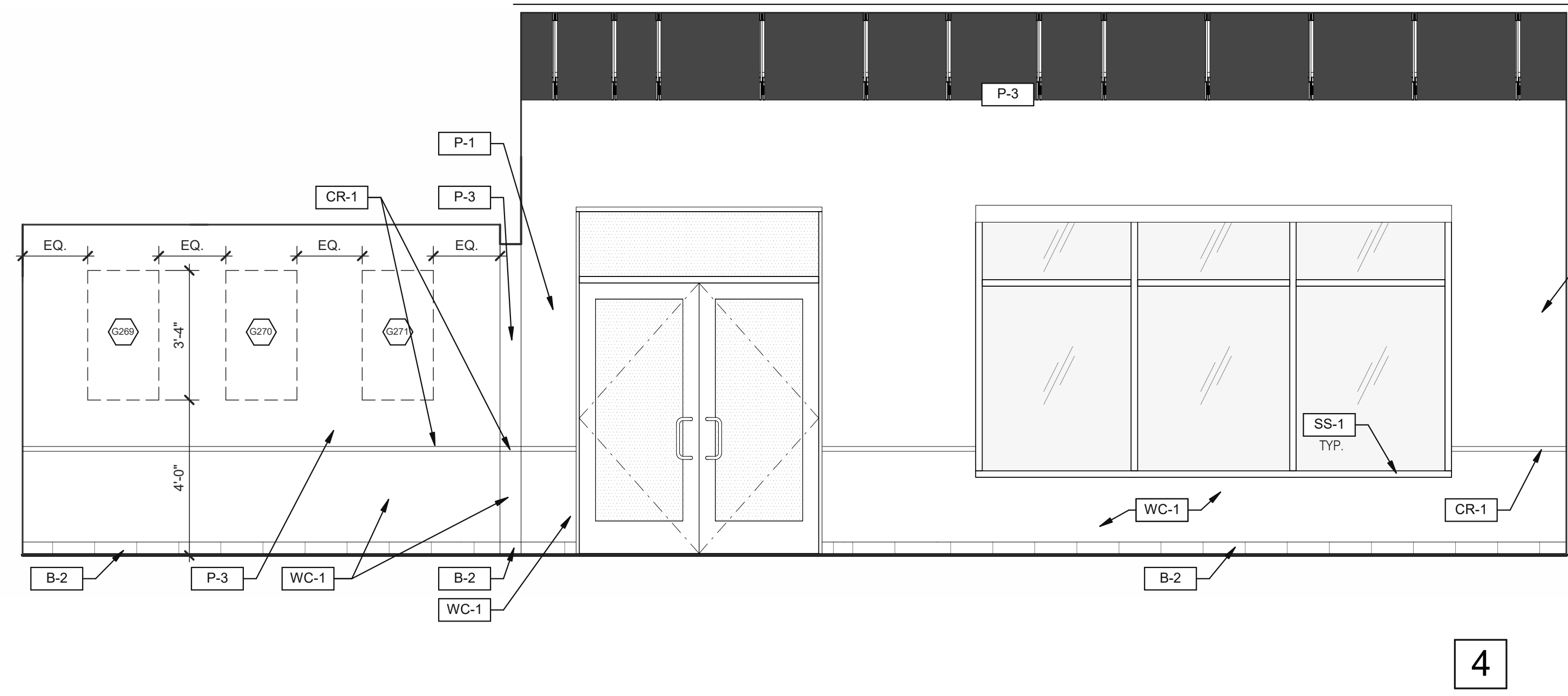
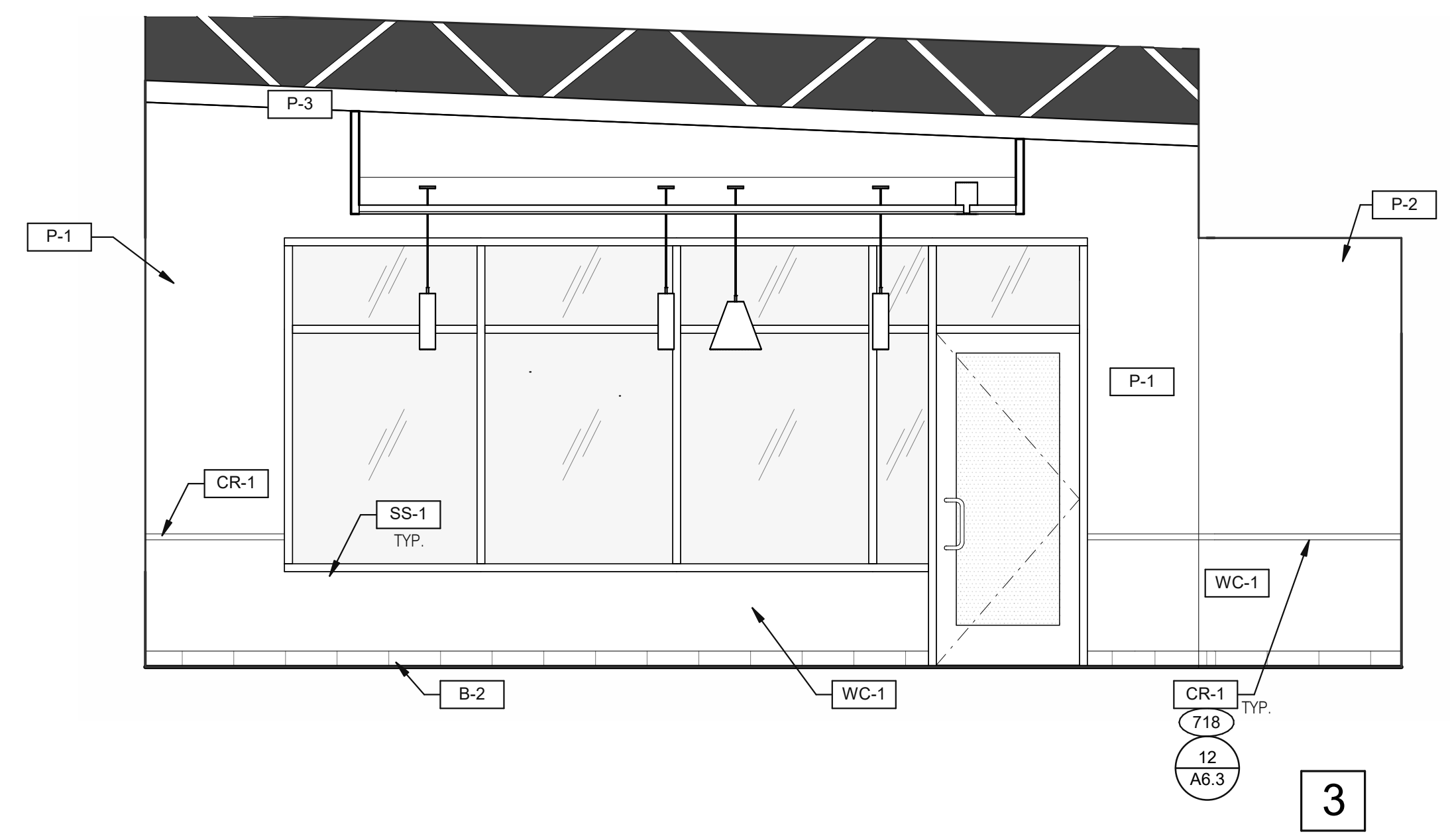


DINING 3/8" = 1'-0"



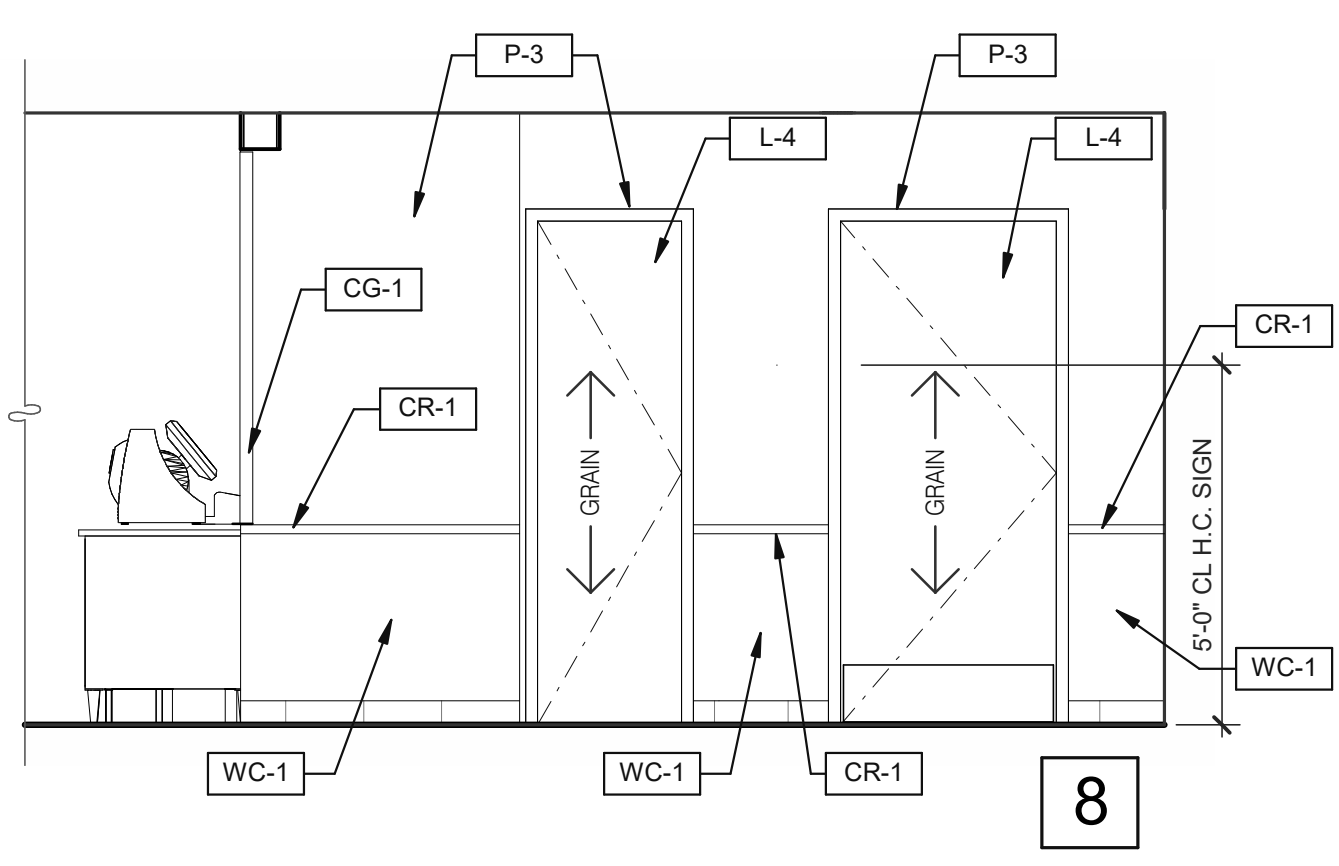
4



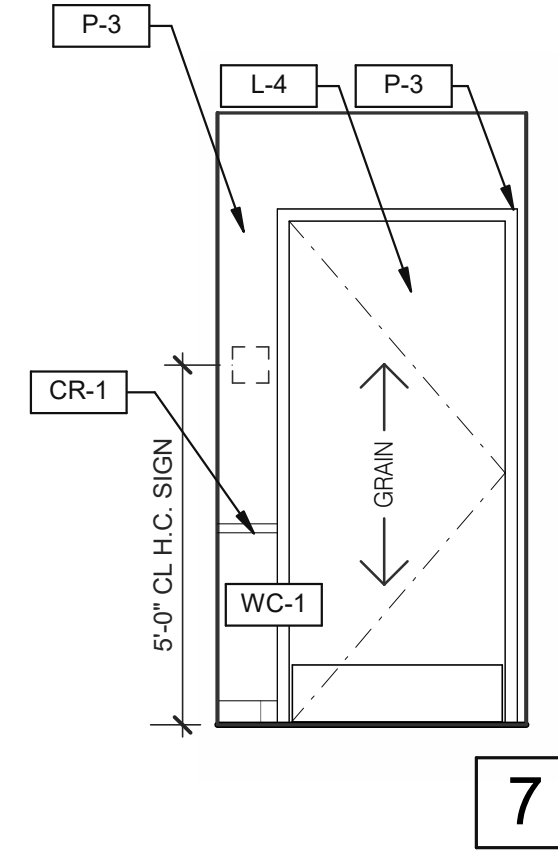
3

DINING 3/8" = 1'-0"

DESIGNER NOTE: CALIFORNIA ADA RESTROOM SIGNAGE SIGNS MUST BE 1/4" THICK, AND IN CONTRASTING COLOR TO THE SURFACE ON WHICH THEY ARE INSTALLED.
 DOOR: GENDER NEUTRAL SIGN (E#: E7000974)
 WALL SIGN: FAMILY RESTROOM SIGN WITH BRAILLE (E#: E76000972)

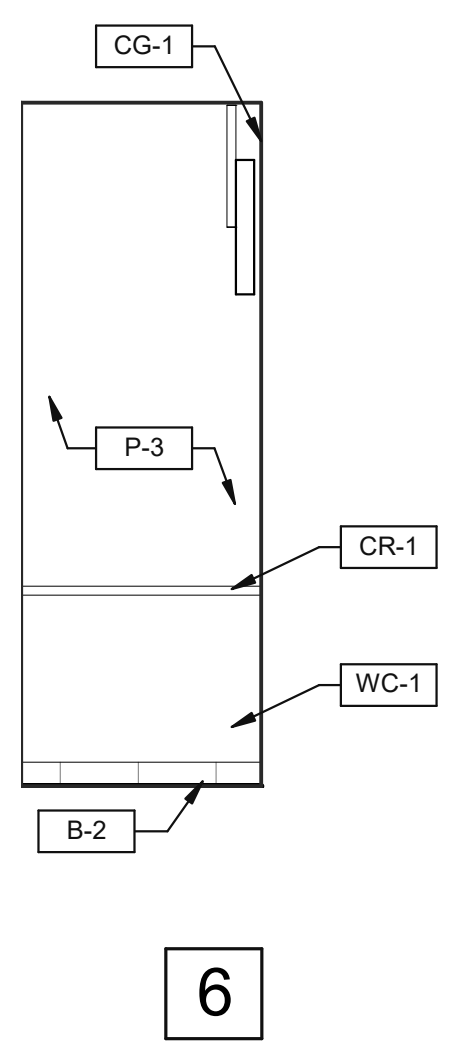


8

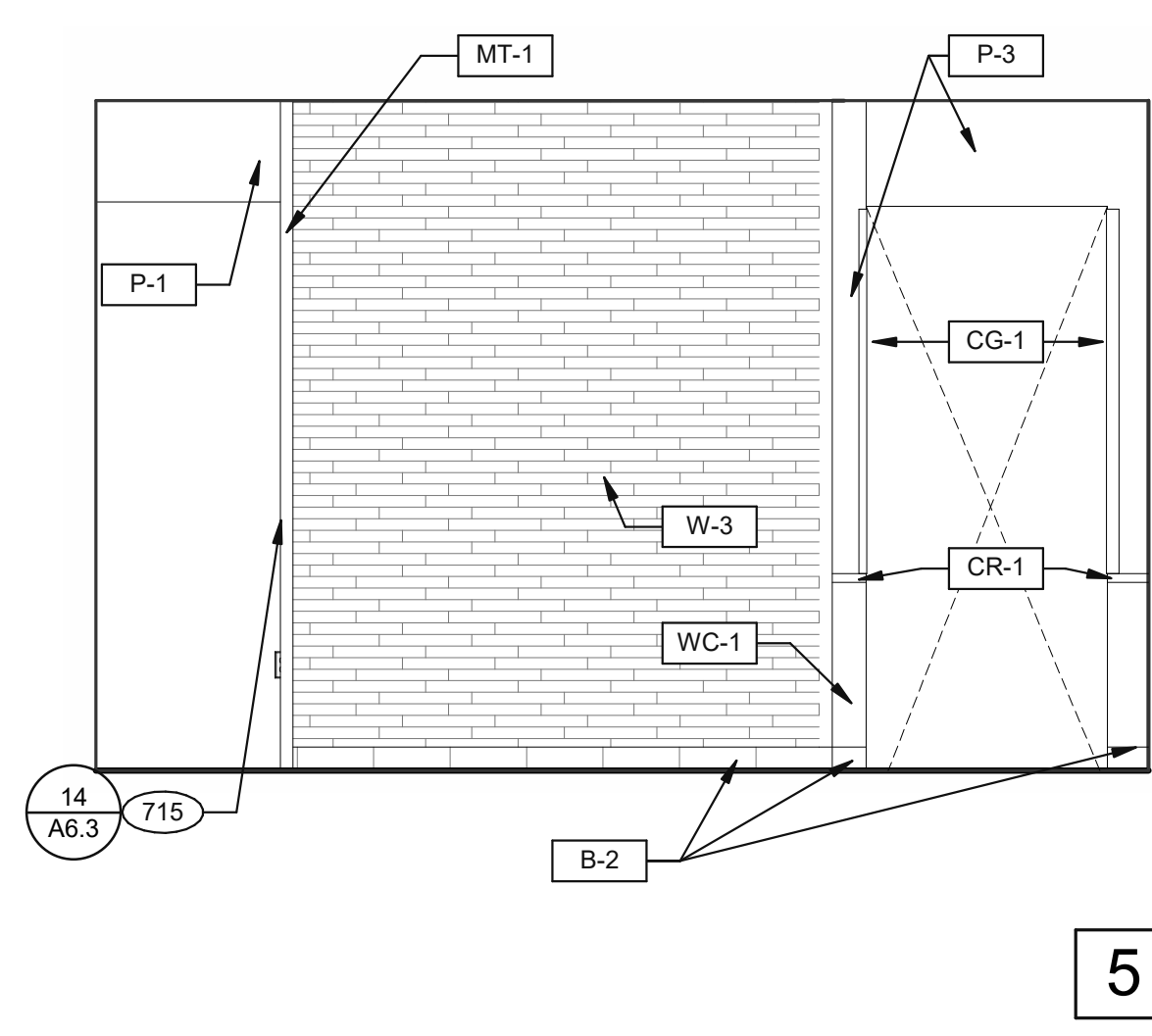


7

PASSAGE 3/8" = 1'-0"



6



5

INTERIOR ELEVATION 3/8" = 1'-0"

- 703 DIGITAL MENUBOARD.
- 707 6"x6"x18" GAUGE STAINLESS STEEL CHASE.
- 709 "PLEASE ASK IF YOU NEED ASSISTANCE SIGN". SMALLWARE PACKAGE.
- 715 SS CORNER/END WALL CHANNEL GUARD, FULL HEIGHT. SEE DETAIL 14/A6.3.
- 718 CHAIR RAIL.
- 754 SS CORNER/END WALL CHANNEL GUARD, FULL HEIGHT. SEE DETAIL 14/A6.3.

KEYNOTES

18048.20003

CONTRACT DATE:
 BUILDING TYPE: END. MED40
 PLAN VERSION: MARCH 2020
 SITE NUMBER: 314443
 STORE NUMBER: #000000

TACO BELL

615 METROPOLITAN AVE
 LEAVENWORTH, KS 66048



ENDEAVOR 1.0
 INTERIOR
 ELEVATIONS
 DINING ROOM

A8.0

PLOT DATE: 10/5/2020 4:43:51 PM