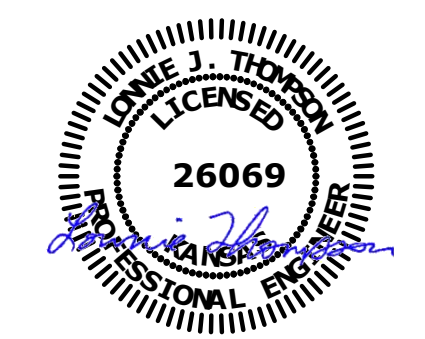
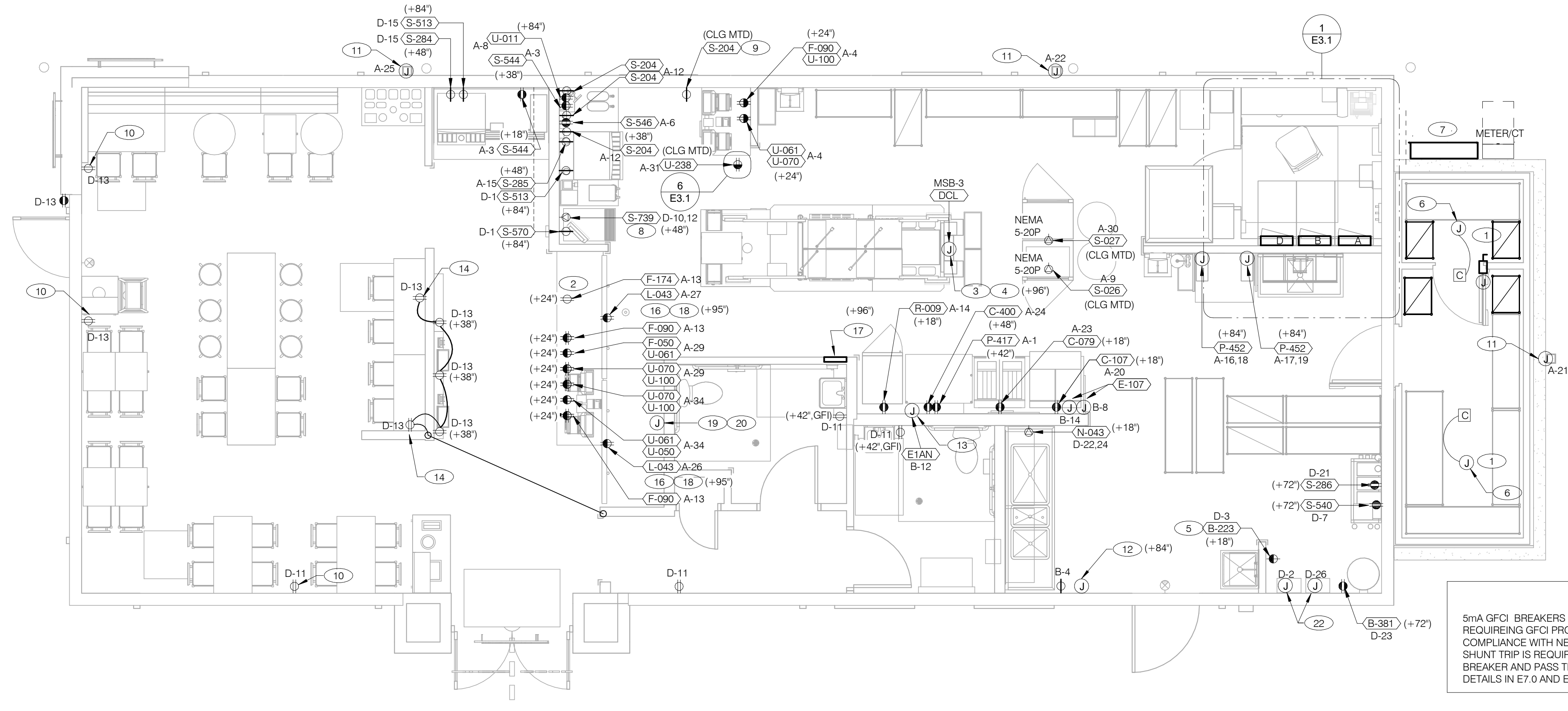


9/29/2020



18048.20003

1	



NOTE
 5mA GFCI BREAKERS MUST BE USED WHERE OUTLETS REQUIRING GFCI PROTECTION ARE NOT ACCESSIBLE FOR COMPLIANCE WITH NEC 210.8. WHERE GFCI PROTECTION AND SHUNT TRIP IS REQUIRED, THE CIRCUIT SHALL HAVE A GFCI BREAKER AND PASS THROUGH THE TBANS PANEL REFER TO DETAILS IN E7.0 AND E7.1.

POWER PLAN 1/4" = 1'-0" **A**

- | | |
|---|--|
| <p>A. ALL DIMENSIONS TO J-BOXES ARE FROM FACE OF STUD TO CENTER OF BOX, U.O.N.</p> <p>B. ALL CONDUIT DROPS ARE INSIDE WALLS U.O.N. SEE ARCH. DWGS FOR WALL DIMS.</p> <p>C. ALL J-BOX CIRCUITS, CONDUITS, FIXTURES, ETC. SHALL BE AS INDICATED ON THE ELECT. DWGS AND SPECS.</p> <p>D. CONTRACTOR SHALL VERIFY UNDERGROUND CONDUIT LOCATIONS PRIOR TO POURING SLAB.</p> <p>E. IT IS THE RESPONSIBILITY OF THE CONTRACTOR TO COORDINATE THIS DATA ON THE LOCATION OF ELECT. ROUGH-INS WITH INFO PROVIDED ON THE ARCH. AND STRUCT. DWGS AND THE EQUIPMENT ACTUALLY SUPPLIED, AND TO CONFIRM THE CORRECTNESS OF ANY DIMENSIONS HEREIN.</p> <p>F. LOCATIONS OF ALL OUTLETS MAY BE RELOCATED TO NEAREST STUD. DO NOT CUT INTO STUDS.</p> <p>G. FOR EXACT LOCATIONS OF KITCHEN & MECHANICAL EQUIPMENT AND POINTS OF CONNECTION, REFER TO KITCHEN & MECHANICAL EQUIPMENT DRAWINGS AND MANUFACTURER'S SHOP DRAWINGS.</p> <p>H. ALL CIRCUIT FEEDERS AND DISCONNECTS SHALL BE SIZED BY NEC.</p> <p>I. CONTRACTOR SHALL VERIFY CIRCUIT BREAKER, DISCONNECT SWITCH, STARTER AND FUSE SIZES WITH SELECTED EQUIPMENT MANUFACTURER'S SHOP DRAWINGS PRIOR TO PLACING ORDER AND PROVIDE EVERYTHING AS REQUIRED.</p> | <p>J. ELECTRICAL EQUIPMENT ENCLOSURES SHALL BE NEMA-1 FOR INTERIOR AND NEMA 3R FOR EXTERIOR. IN COASTAL REGIONS THE STANDARD FOR OUTSIDE SHALL BE NEMA-4X.</p> <p>K. PER SECTION 210.8(B)(3) NEC 2011, ALL 15 AND 20A, 120V RECEPTACLES IN COMMERCIAL KITCHENS ARE REQUIRED TO BE GFCI PROTECTED. THIS INCLUDES ISOLATED GROUND RECEPTACLES.</p> <p>L. DO NOT MEASURE/LOCATE OUTLETS ON DRAWINGS. USE DIMENSIONS PROVIDED.</p> <p>M. CONDUIT MAY RUN UNDER SLAB AT G.C.'S DISCRETION.</p> <p>N. E.C. SHALL PROVIDE A PREPRINTED SELF-ADHESIVE LABEL ON ALL POS RECEPTACLES STATING "POS USE ONLY".</p> <p>O. PROVIDE ESCUTCHEON PLATES AND SEALANT AT ALL UTILITY PENETRATIONS INTO WALLS, CEILING, AND FLOORS. DO NOT USE CAULK OR EXPANSION FOAM FOR SEALANT.</p> <p>P. ARMOR CABLE (BX) ALLOWED WHERE ACCEPTABLE BY CODE. ALL WIRE SHALL BE CONCEALED O.N.U.</p> <p>Q. FOR ALL CIRCUITS NOT SHOWN ON EQUIPMENT SCHEDULE, CONTRACTOR SHALL PROVIDE CONDUCTOR AND CONDUIT SIZES AS SHOWN ON BRANCH CIRCUIT WIRING SCHEDULE SHOWN ON E2.2. IF SIZES DIFFER FROM N.E.C., THE MORE STRINGENT (LARGER) SIZE SHALL BE PROVIDED.</p> <p>R. OUTLETS WITHIN FOH TO BE AT 18" AFF FOR ADA ACCESS.</p> <p>S. CONDUITS NEAR DRIVE THRU WINDOW AREA TO BE ROUTED FROM ABOVE CEILING OR STUBBED UP FROM UNDER SLAB SO AS TO NOT INTERFERE WITH WINDOW FRAMING.</p> |
|---|--|

GENERAL NOTES - ELECTRICAL POWER PLAN NTS **C**

- | | | |
|---|---|---|
| <p>1 REFER TO ROOF PLAN.</p> <p>2 INSTALL IN CONDUIT RUNNING ON SURFACE OF KITCHEN SIDE OF CABINETRY REAR WALL.</p> <p>3 CONNECT PRODUCTION LINE CIRCUIT BREAKER PANEL VIA UTILITY CHASE IN CEILING TO A 3 POLE, 200 AMP CIRCUIT BREAKER IN MAIN SWITCHBOARD. SEE SHEET E2.0. VERIFY ALL REQUIREMENTS WITH ACTUAL EQUIPMENT SPECIFIED. THE MANUFACTURER WILL FULLY PRE-WIRE THE COMPLETE MAPS LINE AT THE FACTORY. THE UNITS WILL THEN BE PULLED APART FOR SHIPPING PURPOSES. ALL CONNECTION POINTS WILL BE MARKED. THE CONDUIT RUNS WILL BE COILED UP FOR FIELD INSTALLATION. SOME ELECTRICAL COMPONENTS MAY BE REMOVED FOR EASE OF DISASSEMBLING THE LINE-UP. THE ELECTRICAL CONTRACTOR WILL BE FULLY RESPONSIBLE FOR MAKING THE PROPER FIELD CONNECTIONS FROM THE ROUGH-IN LOCATION TO THE MANUFACTURER PROVIDED BREAKER PANEL BOX. IN ADDITION, THE ELECTRICAL CONTRACTOR WILL BE RESPONSIBLE FOR ANY SPLICE POINTS AND/OR JUNCTION BOXES THAT NEED TO BE RECONNECTED. SOME ELECTRICAL COMPONENT ASSEMBLY MAY ALSO BE REQUIRED.</p> <p>4 EQUIPMENT CABINET.</p> <p>5 LOCATED INSIDE SHELL OF HEATER.</p> <p>6 INSTALL CONTROL CABLE FROM FREEZER/COOLER FAN COIL TO ROOF MOUNTED CONDENSOR.</p> <p>7 LOCATE SWITCHGEAR PER GUIDELINES ON SHEET A4.1.</p> <p>8 PROVIDE BOOST TRANSFORMER (208V, 1-PHASE IN, 240V, 1-PHASE OUT) FOR FROZEN BEVERAGE DISPENSER.</p> <p>9 CEILING MOUNTED FOR WALL MOUNTED HME. SEE 16/E3.1</p> | <p>10 PROVIDE DUPLEX RECEPTACLE WITH TWO (2) USB CHARGING PORTS.</p> <p>11 POWER FOR DOWN SPOUT HEAT TAPE - VERIFY ELECTRICAL REQUIREMENTS WITH MANUFACTURER.</p> <p>12 PROVIDE J-BOX FOR POWER SOAK INDICATOR LIGHT. (OPTIONAL)</p> <p>13 VERIFY LOCATION OF JUNCTION BOX WITH CONSTRUCTION MANAGER.</p> <p>14 E.C. SHALL PROVIDE, INSTALL AND WIRE A DUPLEX RECEPTACLE WITH (2) USB POWER PORTS IN SINGLE-GANG BOX PROVIDED WITH TABLE, AT EACH END OF THE TABLE. PROVIDE GALVANIZED COVER PLATE TO MATCH BOX.</p> <p>15 NOT USED</p> <p>16 QUAD RECEPTACLE FOR FUTURE DIGITAL MENUBOARD. TYPICAL OF 2.</p> <p>17 2-GANG FLUSH BOX WITH DEAD-FRONT GFCI DEVICES. MOUNT CENTER OF BOX AT 48" A.F.F.. REFER TO E7.0.</p> <p>18 EC / GC TO INSTALL A TOTAL OF (2) QUAD OUTLETS IN (2) QUAD BOXES ON FRONT OF VALANCE WALL AS SHOWN. OUTLETS TO BE STRAIGHT BLADE. OUTLETS TO BE ON AN ISOLATED/DEDICATED GROUNDED CIRCUIT THAT IS NOT CONNECTED TO ANY RESTAURANT POWER MANAGEMENT SYSTEM.</p> | <p>19 EC / GC TO INSTALL (1) OPEN DATA JUNCTION BOX (JB) IN VALANCE WALL. CONDUIT TERMINATED ABOVE CEILING TO HAVE BUSHING.</p> <p>20 EC / GC TO RUN (3) ORANGE CAT6 LINES FROM NETWORK SWITCH TO DATA JUNCTION BOX. CAT6 LINES SHOULD HAVE BOTH ENDS PROPERLY TERMINATED WITH RJ-45 CONNECTORS. EXCESS CAT6 CABLE TO BE COILED INTO SERVICE LOOPS AT EACH END AND LEFT ACCESSIBLE FOR DMB INSTALL TEAM. CAT6 TO BE RUN IN ACCORDANCE WITH ALL LOCAL MUNICIPALITY CODE REQUIREMENTS.</p> <p>21 PROVIDE POWER WITH ACCESSIBLE DISCONNECTING MEANS FOR TANKLESS WATER HEATERS. VERIFY ELECTRICAL REQUIREMENTS WITH MANUFACTURER'S INSTALLATION RECOMMENDATIONS.</p> |
|---|---|---|

KEY NOTES - ELECTRICAL POWER PLAN NTS **B**

BC PROJECT #: 20684
 KANSAS PE COA #E-359

This drawing has been prepared by the Engineer, or under his supervision. This drawing is provided as an instrument of service by the Designer/Engineer and is intended for use on this project only. Pursuant to the Architectural Works Copyright/Protection Act of 1980, all drawings, specifications, ideas and designs, including the overall form, arrangement and composition of spaces and elements appearing herein, constitute the original, copyrighted work of the Designer/Engineer. Any reproduction, use, or disclosure of information contained herein without prior written consent of the Engineer is strictly prohibited. © 2020 BC Engineers, Inc.



5720 Reeder Shawnee, Ks. 66203 (913)262-1772

CONTRACT DATE:
 BUILDING TYPE: END. MED40
 PLAN VERSION: MARCH 2020
 SITE NUMBER:
 STORE NUMBER:

TACO BELL
 615 METROPOLITAN AVE
 LEAVENWORTH, KS 66848



ENDEAVOR 1.0
**ELECTRICAL
 POWER PLAN**

E3.0

PLOT DATE: 9/30/2020 2:29:12 PM