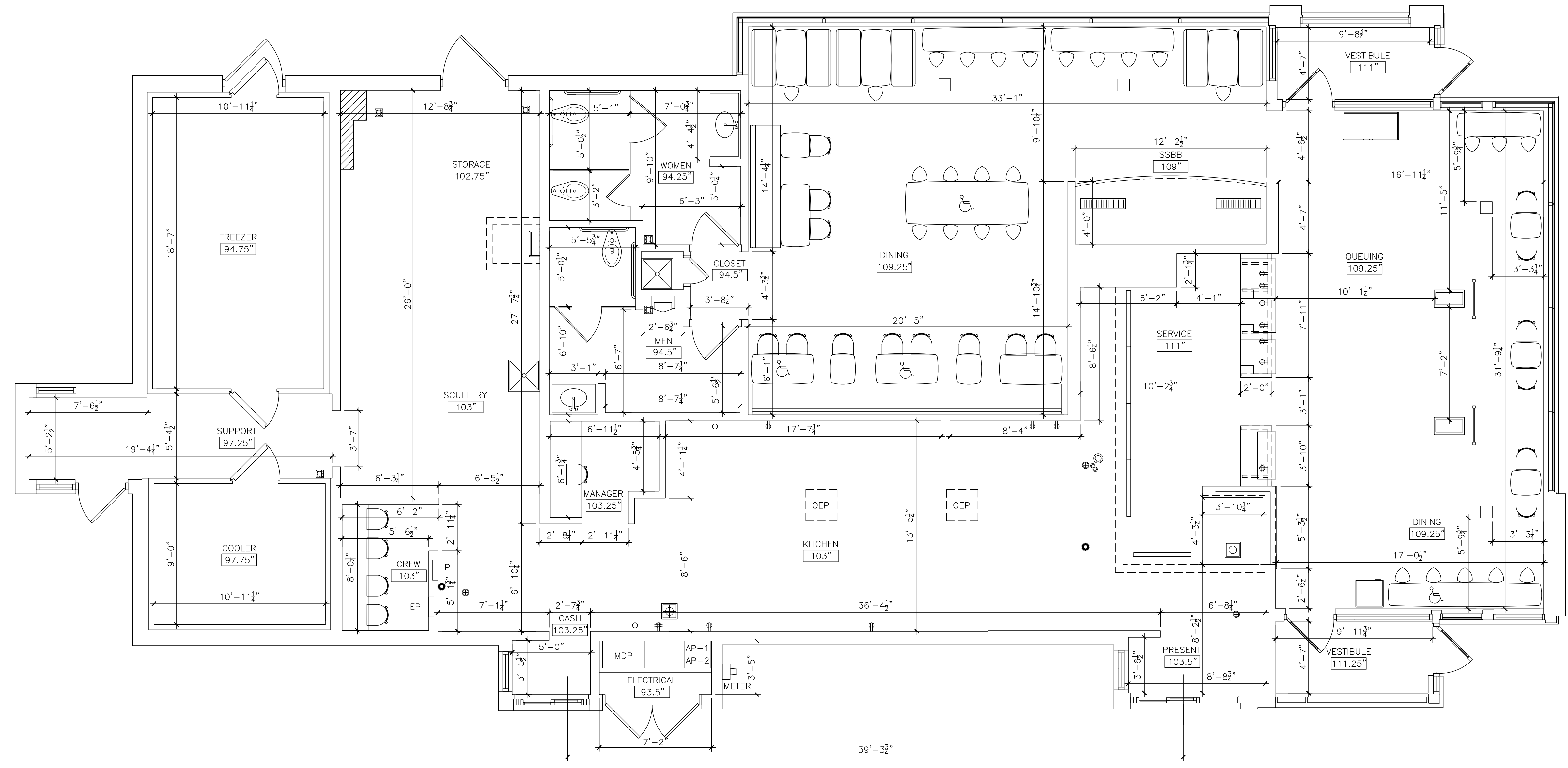
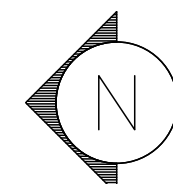


C:\Users\YontsCharles\OneDrive - Sevan Multi-Site Solutions, LLC\Desktop\09-23-2019\015-0191 Master OC2\13535 As Built CAD.dwg September 26, 2019 - 5:17pm \$(GETVAR,??)




1 EXISTING FLOOR PLAN - LEVEL 1
A1.0 SCALE: 1/4" = 1'-0"
 TOTAL SQ FT = 3,674
 TOTAL SEATING = 66

sevan
MULTI-SITE SOLUTIONS
DESIGN LLC.

Regional Office:
37704 Hills Tech Drive
Farmington Hills, MI 48331
Telephone: 734-307-4445

Corporate Office:
4925 Forest Avenue
Downers Grove, IL 60515
info@sevansolutions.com www.sevansolutions.com

SAFETY - INTEGRITY - SUSTAINABILITY

REVISIONS

| NO. | DATE | DESCRIPTION |
|-----|------|-------------|
| | | |
| | | |
| | | |
| | | |
| | | |
| | | |
| | | |
| | | |
| | | |
| | | |

SEAL

SEAL NOTE

PREPARED FOR
McDonald's USA LLC

These drawings and specifications are the confidential and proprietary property of McDonald's USA, LLC and shall not be copied or reproduced without written authorization. The contract documents were prepared for use on this specific site in conjunction with its issue date and are not suitable for use on a different site or at a later time. Use of these drawings for reference or example on another project requires the services of properly licensed architects and engineers. Reproduction of the contract documents for reuse on another project is not authorized.

PROJECT DESCRIPTION
EXISTING CONDITIONS

PROJECT LOCATION
**McDonald's
9405 W 75th St.
Overland Park, KS
66204**

SHEET TITLE
FLOOR PLAN

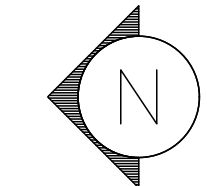
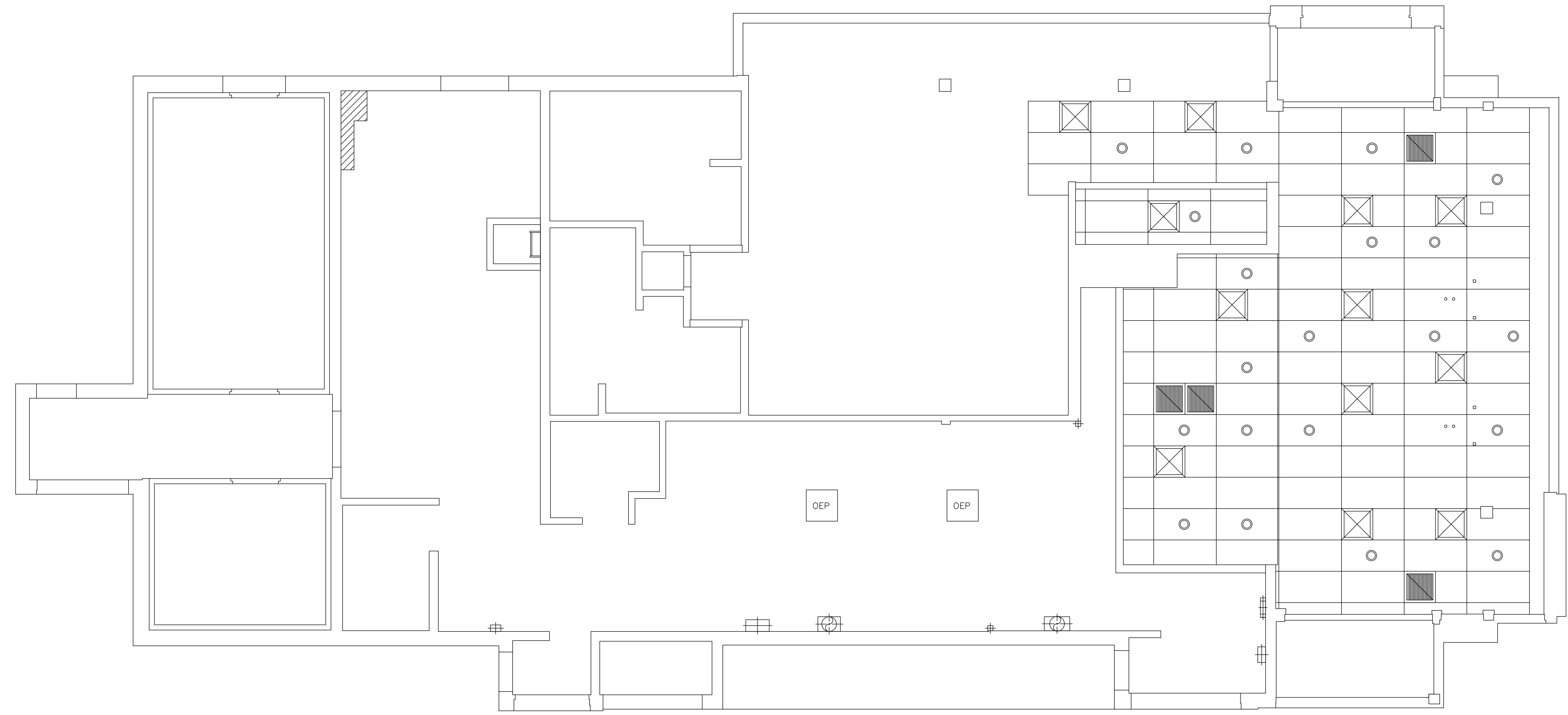
SHEET MANAGEMENT
PROJECT NO.: 015-0191
DATE ISSUED: 09/26/2019
DRAWN BY: SK
REVIEWED BY: CY

NATIONAL STORE #
13535

SHEET NUMBER
A1.0
EX. FLOOR PLAN

Submital Type - AS-BUILT

C:\Users\YontCharles\OneDrive - Sevan Multi-Site Solutions, LLC\Desktop\09-23-2019\015-0191 Master OC2\13535 As Built CAD.dwg September 26, 2019 - 5:17pm \$(GETVAR,??)



1 EXISTING REFLECTED CEILING PLAN
A1.1 SCALE: 1/4" = 1'-0"

sevan
MULTI-SITE SOLUTIONS
DESIGN LLC.

Regional Office:
37704 Hills Tech Drive
Farmington Hills, MI 48331
Telephone: 734-307-4465

Corporate Office:
4925 Forest Avenue
Downers Grove, IL 60515
info@sevansolutions.com www.sevansolutions.com

SAFETY - INTEGRITY - SUSTAINABILITY

| REVISIONS | | |
|-----------|------|-------------|
| NO. | DATE | DESCRIPTION |
| - | - | - |
| - | - | - |
| - | - | - |
| - | - | - |
| - | - | - |
| - | - | - |
| - | - | - |
| - | - | - |

SEAL

SEAL NOTE

PREPARED FOR

McDonald's USA LLC

These drawings and specifications are the confidential and proprietary property of McDonald's USA, LLC and shall not be copied or reproduced without written authorization. The contract documents were prepared for use on this specific site in conjunction with its issue date and are not suitable for use on a different site or at a later time. Use of these drawings for reference or example on another project requires the services of properly licensed architects and engineers. Reproduction of the contract documents for reuse on another project is not authorized.

PROJECT DESCRIPTION
EXISTING CONDITIONS

PROJECT LOCATION
McDonald's
9405 W 75th St.
Overland Park, KS
66204

SHEET TITLE
REFLECTED CEILING PLAN

SHEET MANAGEMENT

| | |
|--------------|------------|
| PROJECT NO.: | 015-0191 |
| DATE ISSUED: | 09/26/2019 |
| DRAWN BY: | SK |
| REVIEWED BY: | CY |

NATIONAL STORE #
13535

SHEET NUMBER
A1.1
EX. RCP

Submital Type - AS-BUILT

| REVISIONS | |
|-----------|-------------|
| NO. | DESCRIPTION |
| | |
| | |
| | |
| | |
| | |
| | |
| | |
| | |
| | |
| | |

SEAL

SEAL NOTE

PREPARED FOR
McDonald's USA LLC

These drawings and specifications are the confidential and proprietary property of McDonald's USA, LLC and shall not be copied or reproduced without written authorization. The contract documents were prepared for use on this specific site in conjunction with its issue date and are not suitable for use on a different site or at a later time. Use of these drawings for reference or example on another project requires the services of properly licensed architects and engineers. Reproduction of the contract documents for reuse on another project is not authorized.

PROJECT DESCRIPTION
EXISTING CONDITIONS

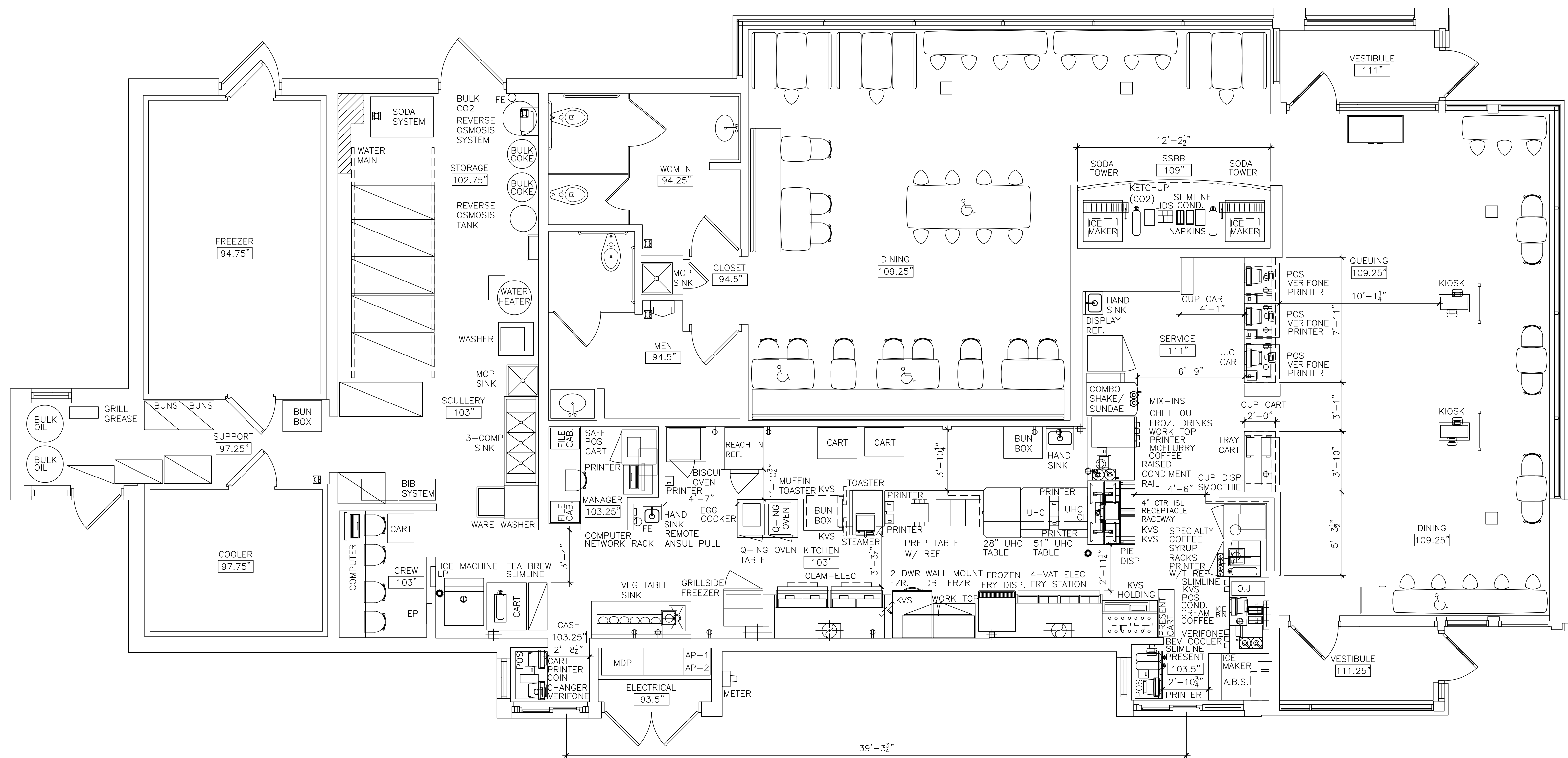
PROJECT LOCATION
**McDonald's
9405 W 75th St.
Overland Park, KS
66204**

SHEET TITLE
**KITCHEN
EQUIPMENT PLAN**

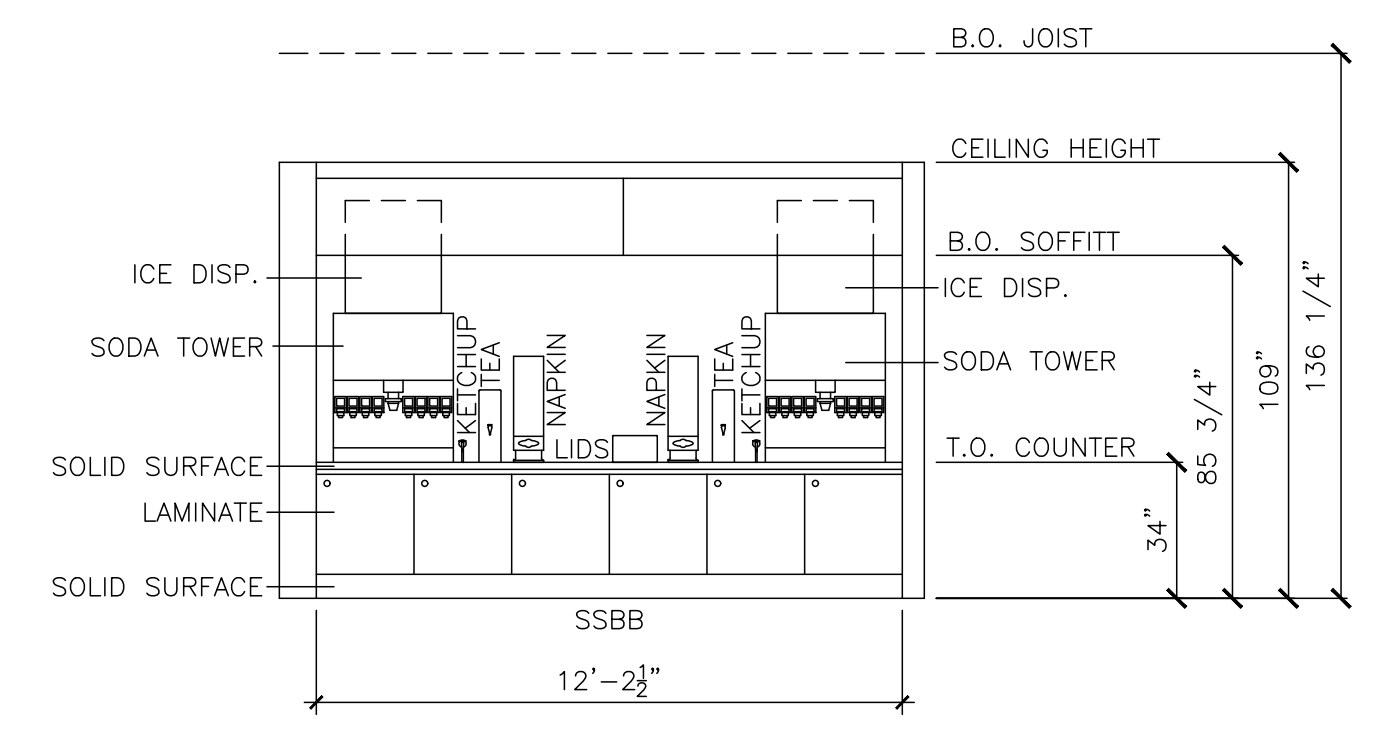
SHEET MANAGEMENT
PROJECT NO.: 015-0191
DATE ISSUED: 09/26/2019
DRAWN BY: SK
REVIEWED BY: CY

NATIONAL STORE #
13535

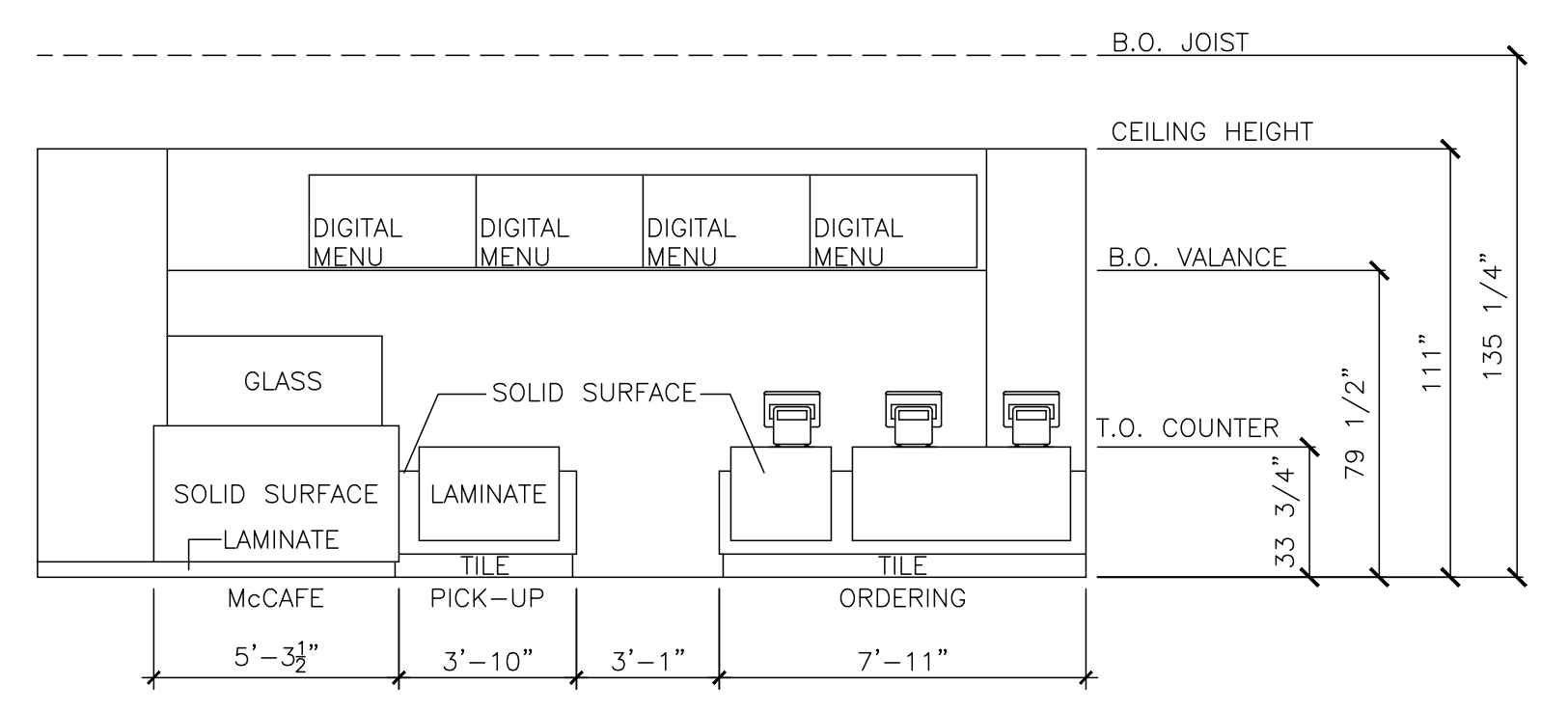
SHEET NUMBER
K1.0
EX. EQUIPMENT PLAN



1 EXISTING EQUIPMENT PLAN
K1.0 SCALE: 1/4" = 1'-0"



2 EXISTING SSBB COUNTER ELEVATION
K1.0 SCALE: 1/4" = 1'-0"



3 EXISTING FRONT COUNTER ELEVATION
K1.0 SCALE: 1/4" = 1'-0"