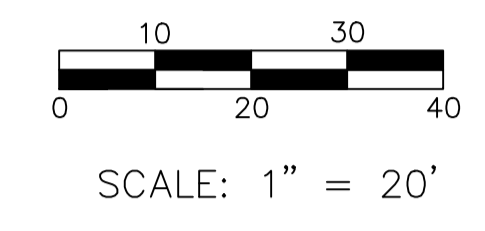


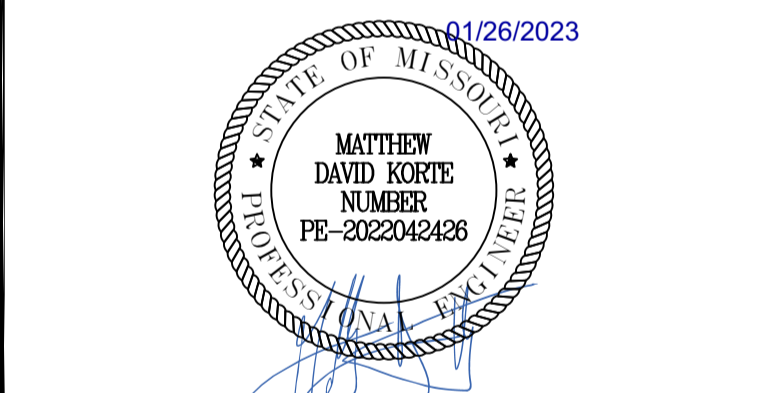
BUILDING OFFICIAL
REVIEWED FOR COMPLIANCE WITH THE CITY CODE, ADOPTED BUILDING CODES, ZONING ORDINANCE AND DESIGN STANDARDS. THIS REVIEW AND APPROVAL DOES NOT RELIEVE THE DEVELOPER OR HIS AGENTS OF ANY RESPONSIBILITY FOR COMPLIANCE WITH ALL APPLICABLE REQUIREMENTS, OR ADDRESS OR OVERRULE THE REQUIREMENTS OF OTHER JURISDICTIONS OR AGENCIES, UNLESS SPECIFICALLY NOTED OTHERWISE.

Kevin R. ...
SIGNATURE DATE
PRJ202500932



Date	Description	No.
Revisions		

McDonald's USA, LLC
 These drawings and specifications are the confidential and proprietary property of McDonald's USA, LLC and shall not be copied or reproduced without written authorization. The contract documents were prepared for use on this specific site in conjunction with its issue date and are not suitable for use on a different site or at a later time. Use of these drawings for reference or example on another project requires the services of properly licensed architects and engineers. Reproduction of the contract documents for reuse on another project is not authorized.



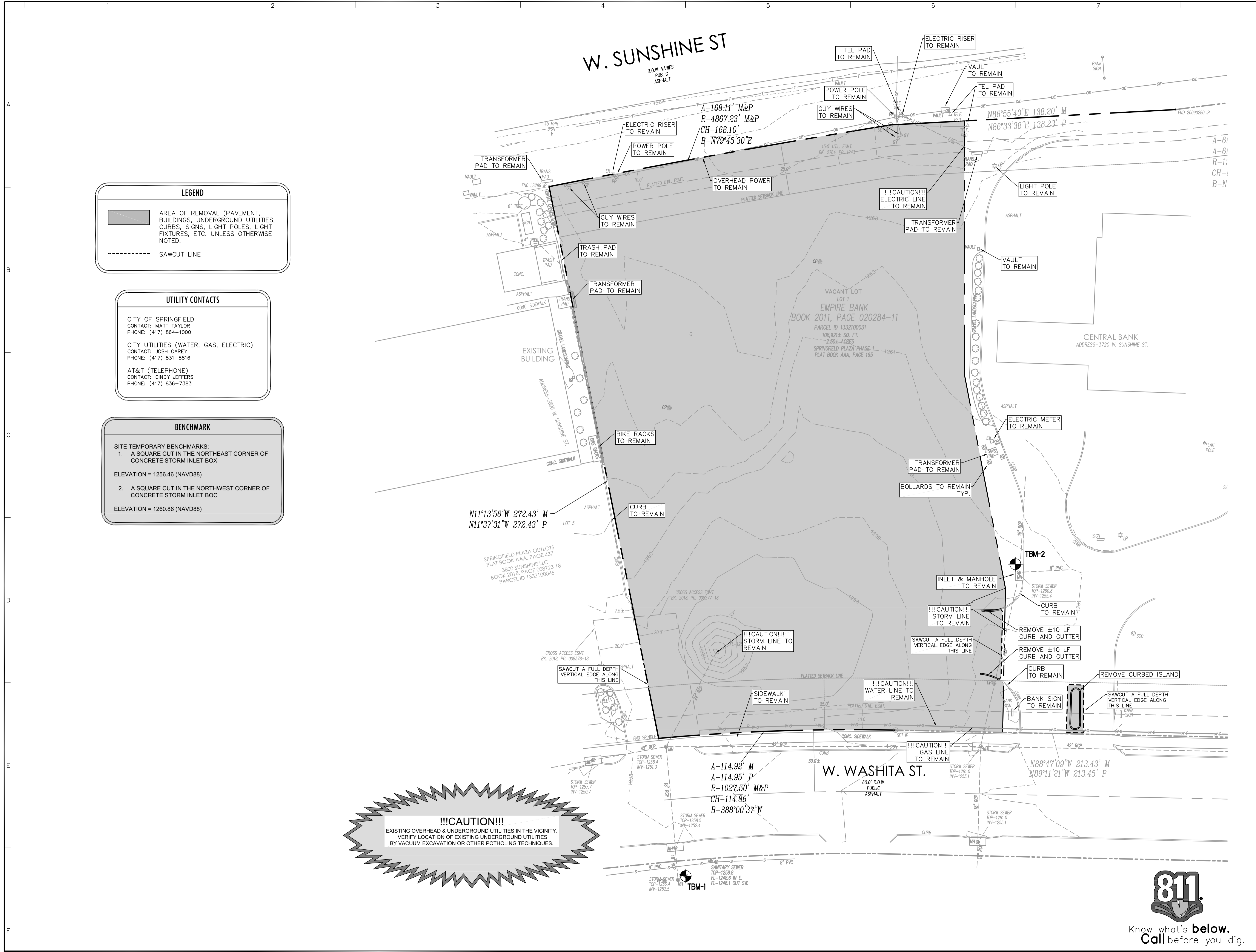
LANGAN
 Langan Engineering and Environmental Services, Inc.
 8951 Cypress Waters Blvd, Suite 150
 Dallas, TX 75019
 T: 817.328.3200 www.langan.com
 MO Certificate of Authorization No. F001330220

Project
McDONALD'S NEW PROJECT
L/C 024-1290
3720 WEST SUNSHINE STREET
SPRINGFIELD

GREENE COUNTY MISSOURI
 Drawing Title

DEMOLITION PLAN

Project No. 520054201	Drawing No. C2.0
Date DECEMBER 2022	
Drawn By OROD	
Checked By DWL	
	Sheet 4 of 29



LEGEND

AREA OF REMOVAL (PAVEMENT, BUILDINGS, UNDERGROUND UTILITIES, CURBS, SIGNS, LIGHT POLES, LIGHT FIXTURES, ETC. UNLESS OTHERWISE NOTED.)

SAWCUT LINE

UTILITY CONTACTS

CITY OF SPRINGFIELD
 CONTACT: MATT TAYLOR
 PHONE: (417) 864-1000

CITY UTILITIES (WATER, GAS, ELECTRIC)
 CONTACT: JOSH CAREY
 PHONE: (417) 831-8816

AT&T (TELEPHONE)
 CONTACT: CINDY JEFFERS
 PHONE: (417) 836-7383

BENCHMARK

SITE TEMPORARY BENCHMARKS:

- A SQUARE CUT IN THE NORTHEAST CORNER OF CONCRETE STORM INLET BOX
 ELEVATION = 1256.46 (NAVD88)
- A SQUARE CUT IN THE NORTHWEST CORNER OF CONCRETE STORM INLET BOX
 ELEVATION = 1260.86 (NAVD88)

!!!CAUTION!!!
 EXISTING OVERHEAD & UNDERGROUND UTILITIES IN THE VICINITY. VERIFY LOCATION OF EXISTING UNDERGROUND UTILITIES BY VACUUM EXCAVATION OR OTHER POTHOLING TECHNIQUES.

