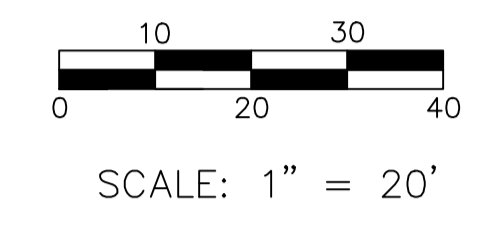


REVIEWED FOR COMPLIANCE WITH THE CITY CODE, ADOPTED BUILDING CODES, ZONING ORDINANCE AND DESIGN STANDARDS. THIS REVIEW AND APPROVAL DOES NOT RELIEVE THE DEVELOPER OR HIS AGENTS OF ANY RESPONSIBILITY FOR COMPLIANCE WITH ALL APPLICABLE REQUIREMENTS, OR ADDRESS OR OVERRULE THE REQUIREMENTS OF OTHER JURISDICTIONS OR AGENCIES, UNLESS SPECIFICALLY NOTED OTHERWISE.

APPROVED  
 SIGNATURE: *[Signature]*  
 DATE: 01/27/23  
 PRJ202300932



ACREAGE SUMMARY	
TOTAL SITE	1.275 AC
TOTAL DISTURBED	±1.275 AC
WEIGHTED PRE-CONSTRUCTION RUNOFF COEFFICIENT	0.30
WEIGHTED POST-CONSTRUCTION RUNOFF COEFFICIENT	0.80
POST AREA ROOFED OR PAVED	1.055 AC
POST AREA LANDSCAPED	0.22 AC

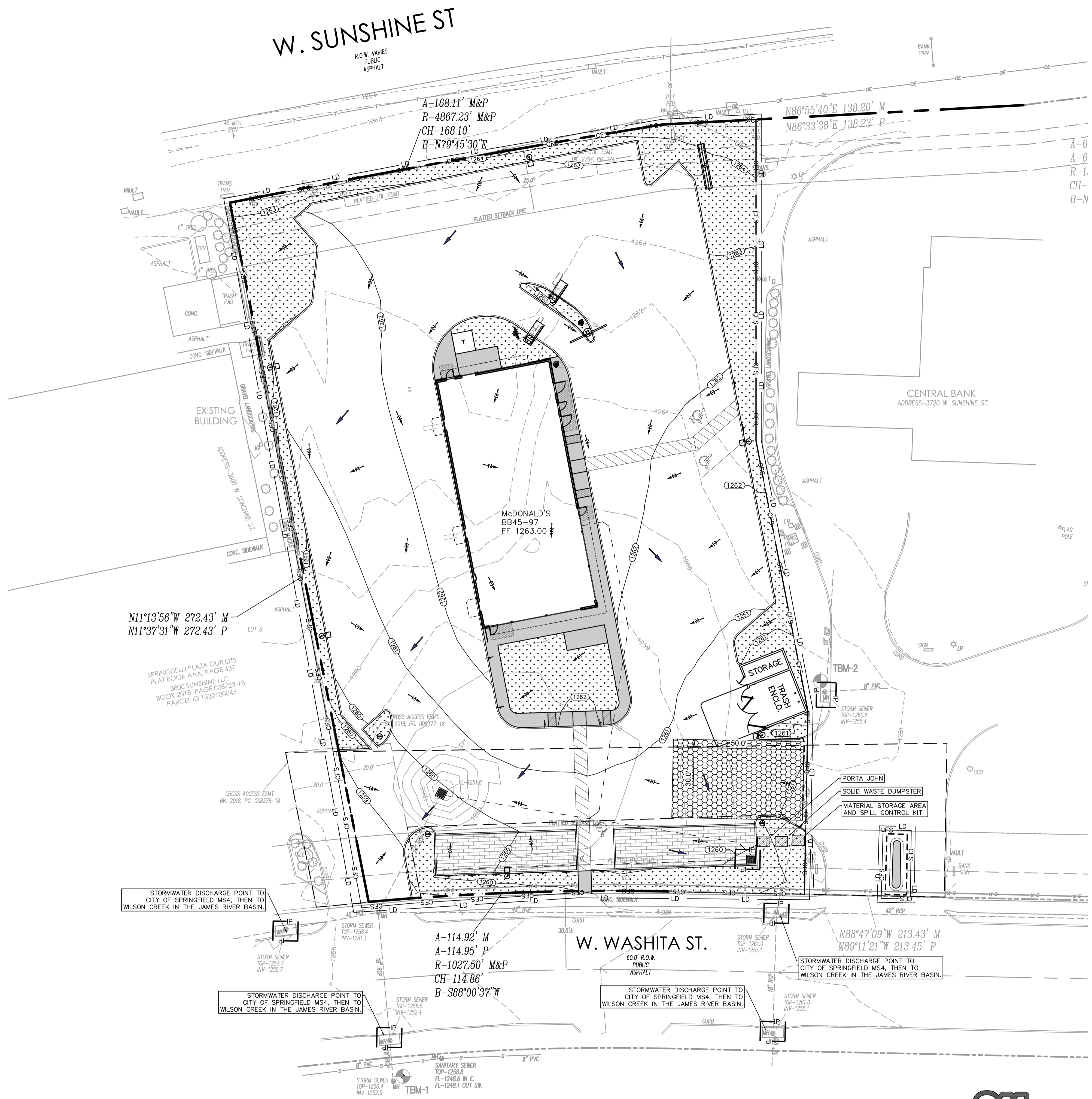
LEGEND	
	LANDSCAPE AREAS
	CONSTRUCTION ENTRANCE
	PERMEABLE PAVERS
	EXISTING CONTOUR
	PROPOSED CONTOUR
	EXISTING DRAINAGE FLOW ARROW
	PROPOSED DRAINAGE FLOW ARROW
	LIMITS OF DISTURBANCE
	INLET PROTECTION
	COMPOST FILTER SOCK (RE: C3.2 EROSION CONTROL DETAILS)

**\*\*\*CAUTION - NOTICE TO CONTRACTOR\*\*\***

THE CONTRACTOR IS SPECIFICALLY CAUTIONED THAT THE LOCATION AND/OR ELEVATION OF EXISTING UTILITIES AS SHOWN ON THESE PLANS IS BASED UPON RECORD OF THE VARIOUS UTILITY COMPANIES AND, WHERE POSSIBLE, ACTUAL MEASUREMENTS TAKEN IN THE FIELD. THE INFORMATION PROVIDED HEREON IS NOT TO BE TAKEN AS EXACT OR FULLY COMPLETE. THE CONTRACTOR MUST CALL THE APPROPRIATE UTILITY COMPANY AT LEAST 48 HOURS BEFORE ANY EXCAVATION TO REQUEST EXACT FIELD LOCATION OF ALL EXISTING UTILITIES. IT SHALL BE THE RESPONSIBILITY OF THE CONTRACTOR TO RELOCATE ALL EXISTING UTILITIES WHICH CONFLICT WITH THE PROPOSED IMPROVEMENTS AS SHOWN.

**\*\*\*NOTE TO CONTRACTOR\*\*\***

THE CONTRACTOR SHALL NOTE ON SITE PLAN THE LOCATION OF ALL MATERIAL STORAGE AREAS, EQUIPMENT STORAGE AREAS, PETROLEUM TANKS, SOLID WASTE RECEPTACLES, SANITARY FACILITIES, CONCRETE WASHOUT AREAS, ANY ON-SITE OR OFF-SITE BORROW OR STOCKPILE AREA, ANY ON-SITE OR OFF-SITE SUPPORT ACTIVITIES (SUCH AS ASPHALT OR CONCRETE PLANTS). CONTRACTOR SHALL ALSO PREPARE, KEEP ON SITE, AND MAINTAIN CURRENT A LIST OF MATERIALS WITH APPROXIMATE QUANTITIES, WHICH ARE STORED ON SITE.



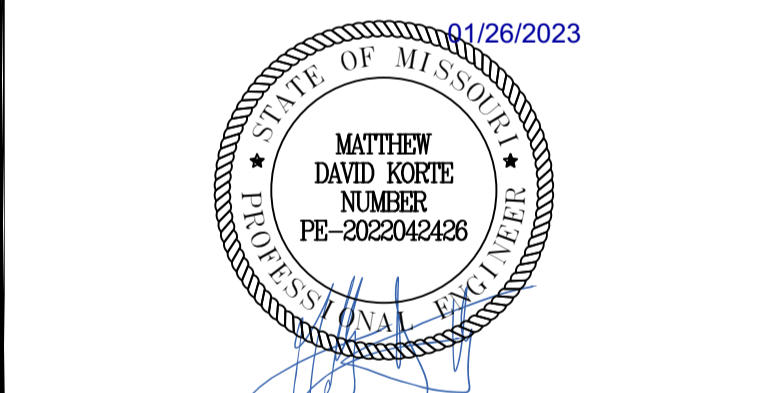
BMP Phasing Table

Project Stage	Erosion Control BMP Reference Number	BMP Description	Date installed	Date removed
A. Pre-construction	A1	Construction exit		
	A2	Existing storm inlet protection		
	A3	Porta potty, solid waste dumpster, material storage area, spill control kit		
	A4	Compost filter sock		
	A5	Tree protection fencing		
B. Clearing and mass grading	B1	Compost filter sock		
	B2	Temporary and permanent seeding		
	B3	Stockpile topsoil		
C. Building construction	C1	Inlet protection		
	C2	Concrete washout pit		
D. Final stabilization	D1	Planting and/or seeding vegetated areas		
	D2	Removal of temporary BMPs		

Date	Description	No.
Revisions		

**McDonald's USA, LLC**

These drawings and specifications are the confidential and proprietary property of McDonald's USA, LLC and shall not be copied or reproduced without written authorization. The contract documents were prepared for use on this specific site in conjunction with its issue date and are not suitable for use on a different site or at a later time. Use of these drawings for reference or example on another project requires the services of properly licensed architects and engineers. Reproduction of the contract documents for reuse on another project is not authorized.



**LANGAN**

Langan Engineering and Environmental Services, Inc.  
 8951 Cypress Waters Blvd, Suite 150  
 Dallas, TX 75019  
 T: 817.328.3200 www.langan.com  
 MO Certificate of Authorization No. F001330220

Project: **McDONALD'S NEW PROJECT**  
**L/C 024-1290**  
**3720 WEST SUNSHINE STREET**  
**SPRINGFIELD**

GREENE COUNTY MISSOURI  
 Drawing Title

**EROSION CONTROL PLAN**

Project No.	Drawing No.
520054201	C3.0
Date	
DECEMBER 2022	
Drawn By	
OROD	
Checked By	
DWL	
Sheet 5 of 29	

