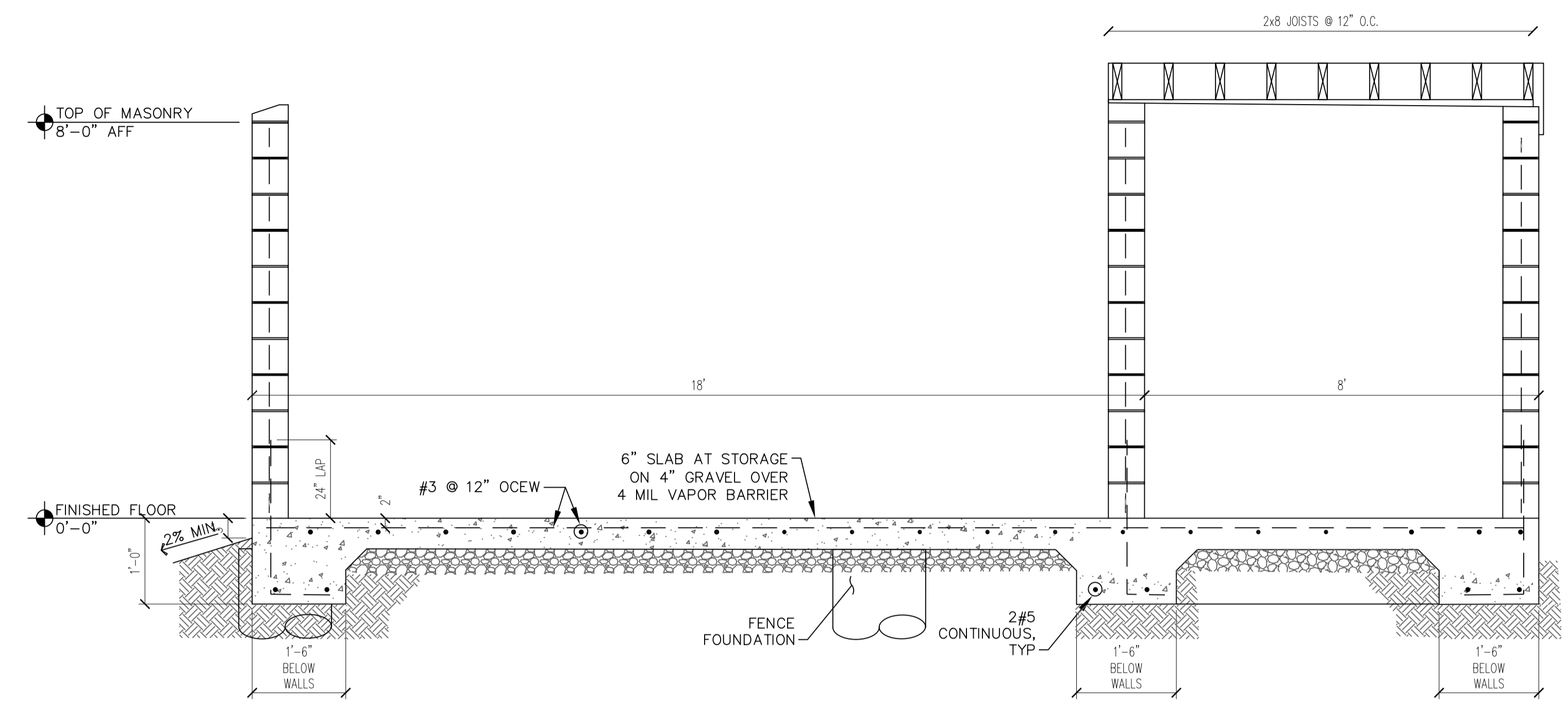
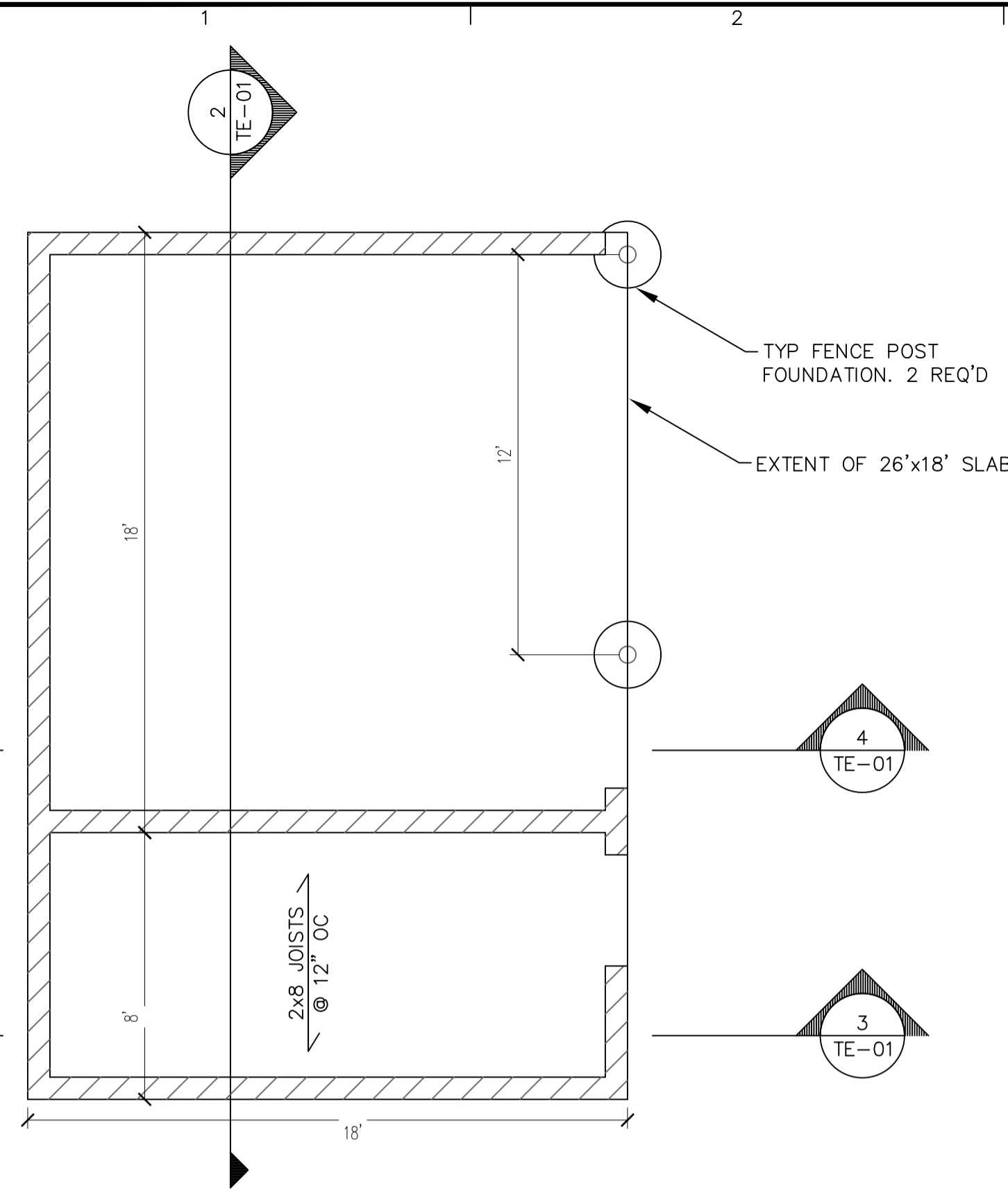


BUILDING OFFICIAL
 REVIEWED FOR COMPLIANCE WITH THE CITY CODE, ADOPTED BUILDING CODES, ZONING ORDINANCE AND DESIGN STANDARDS. THIS REVIEW AND APPROVAL DOES NOT RELIEVE THE DEVELOPER OR HIS AGENTS OF ANY RESPONSIBILITY FOR COMPLIANCE WITH ALL APPLICABLE REQUIREMENTS, OR ADDRESS OR OVERRULE THE REQUIREMENTS OF OTHER JURISDICTIONS OR AGENCIES, UNLESS SPECIFICALLY NOTED OTHERWISE.

Kevin R. Parris 04/25/23
 SIGNATURE DATE
PRJ2023-00032

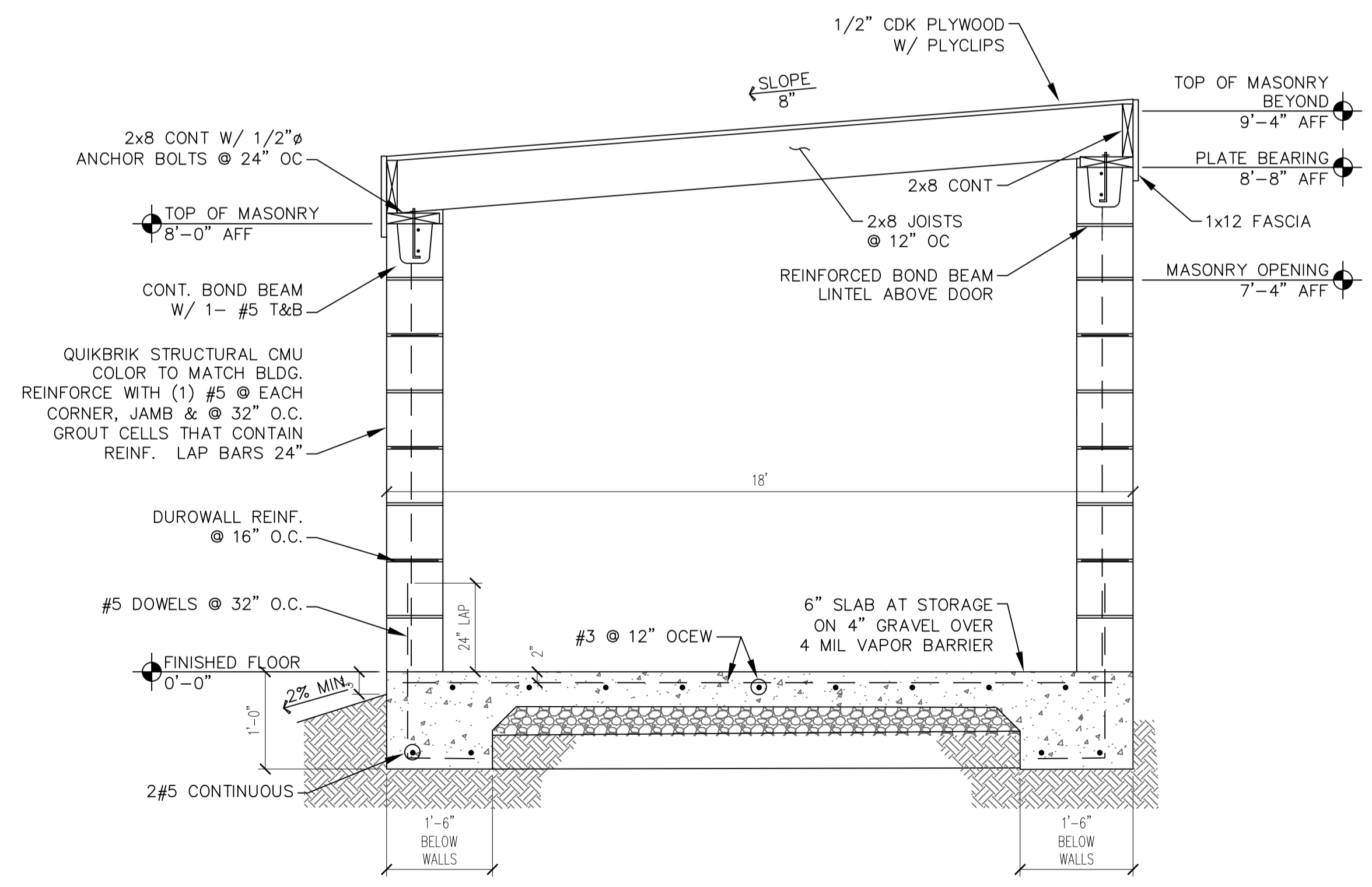
GENERAL NOTES
 -THE FOLLOWING CODES WERE USED IN DESIGN:
 -IBC 2018
 -ASCE 7-16
 -ACI 318-19
 -ACI 360R-10
 -TMS402-16
 -WIND SPEED 120 MPH
 -EXPOSURE C
 -RISK CATEGORY II
 -ALL FOOTING EXCAVATIONS ARE TO BE CLEAR OF WATER AND FOREIGN MATTER BEFORE PLACING CONCRETE.
 -PRESUMPTIVE MAX LATERAL SOIL BEARING PRESSURE OF 100 PSF/FT (X2)
 -PRESUMPTIVE MAX VERTICAL FOUNDATION PRESSURE OF 1500 PSF.
 -CONTRACTOR SHALL BE RESPONSIBLE FOR PREPARING SUBGRADE TO MEET MINIMUM SOIL BEARING VALUES.

CONCRETE:
 -ALL FOOTINGS SHALL BEAR ON FIRM UNDISTURBED RESIDUAL SOIL AND/OR ENGINEERED EARTH FILL COMPACTED TO 98% OF ITS MAXIMUM DRY DENSITY AS PER ASTM D 698-70 (STANDARD PROCTOR) UNLESS NOTED OTHERWISE
 -TOP OF PIERS SHALL BE SLOPED SUCH THAT MOISTURE CANNOT ACCUMULATE
 -MINIMUM CONCRETE STRENGTH ($f'c=3,000$ PSI) SHALL CONFORM WITH MCDONALD'S CAST-IN-PLACE CONCRETE SPECIFICATIONS SECTION 2.13-A
 -USE OF ADMIXTURES SHALL CONFORM TO MCDONALD'S CAST-IN-PLACE CONCRETE SPECIFICATION SECTION 2.6
 -AIR ENTERTAINMENT SHALL CONFORM WITH MCDONALD'S CAST-IN-PLACE CONCRETE SPECIFICATIONS 2.6-A AND 2.13-A
 -WATER CONTENT RATIO SHALL CONFORM TO MCDONALD'S CAST-IN-PLACE CONCRETE SPECIFICATIONS SECTION 2.13-A
 -FOUNDATION CONCRETE TO BE TESTED PER MCDONALD'S CAST-IN-PLACE CONCRETE SPECIFICATIONS SECTION 3.14
 -PROVIDE A MINIMUM 3" OF CONCRETE COVER OVER ALL EMBEDDED STEEL.
 -REINFORCEMENT PLACEMENT SHALL CONFORM TO MCDONALD'S CAST-IN-PLACE CONCRETE SPECIFICATIONS SECTIONS 3.2 & 3.5 PERFORMED BY GENERAL CONTRACTOR
 -ANCHOR RODS TO BE SET IN ACCORDANCE WITH AISC CODE OF STANDARD PRACTICE

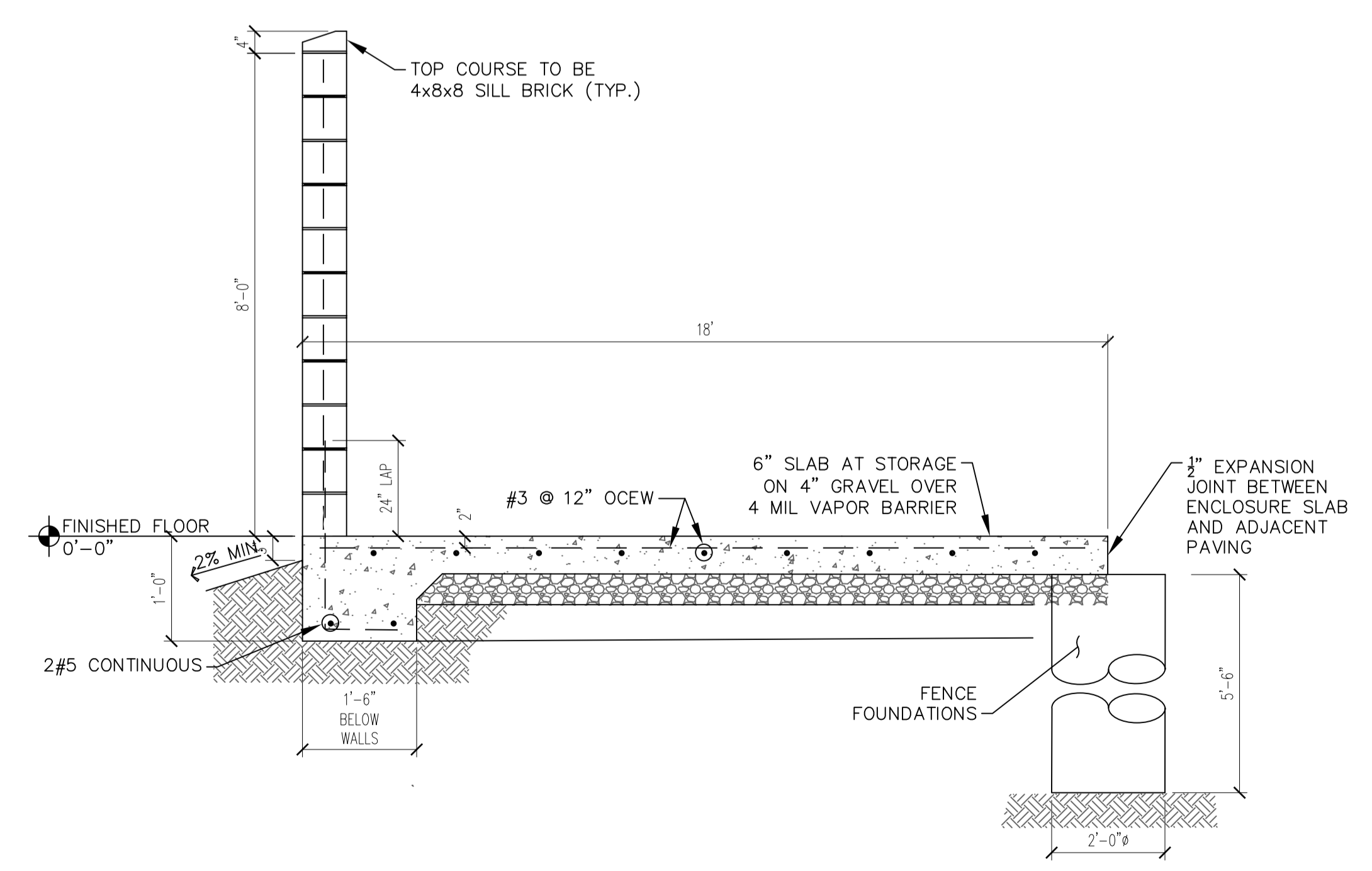


1 TRASH ENCLOSURE WITH LOCKABLE STORAGE
 TE-01 NOT TO SCALE

2 TYPICAL WALL SECTION
 TE-01 NOT TO SCALE



3 SECTION THRU STORAGE ROOM
 TE-01 NOT TO SCALE



4 TYPICAL WALL SECTION
 TE-01 NOT TO SCALE

Date	Description	No.
Revisions		

McDonald's USA, LLC
 These drawings and specifications are the confidential and proprietary property of McDonald's USA, LLC and shall not be copied or reproduced without written authorization. The contract documents were prepared for use on this specific site in conjunction with its issue date and are not suitable for use on a different site or at a later time. Use of these drawings for reference or example on another project requires the services of properly licensed architects and engineers. Reproduction of the contract documents for reuse on another project is not authorized.



LANGAN
 Langan Engineering and Environmental Services, Inc.
 8951 Cypress Waters Blvd, Suite 150
 Dallas, TX 75019
 T: 817.328.3200 www.langan.com
 MO Certificate of Authorization No. F001330220

Project
McDONALD'S NEW PROJECT
L/C 024-1290
3720 WEST SUNSHINE STREET
SPRINGFIELD

GREENE COUNTY MISSOURI
 Drawing Title

TRASH ENCLOSURE/STORAGE BUILDING DETAILS

Project No. 520054201	Drawing No. TE-1
Date DECEMBER 2022	
Drawn By OROD	
Checked By LG	
Sheet 29 of 29	