

REVIEWED FOR COMPLIANCE WITH THE CITY CODE, ADOPTED BUILDING CODES, ZONING ORDINANCE AND DESIGN STANDARDS. THIS REVIEW AND APPROVAL DOES NOT RELIEVE THE DEVELOPER OR HIS AGENTS OF ANY RESPONSIBILITY FOR COMPLIANCE WITH ALL APPLICABLE REQUIREMENTS OR ADDRESS OR OVERRULE THE REQUIREMENTS OF OTHER JURISDICTIONS OR AGENCIES, UNLESS SPECIFICALLY NOTED OTHERWISE.

04/25/23  
DATE

DRAWING NOTES

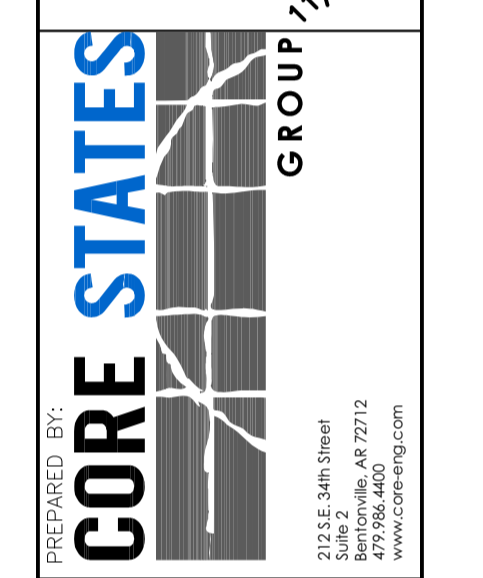
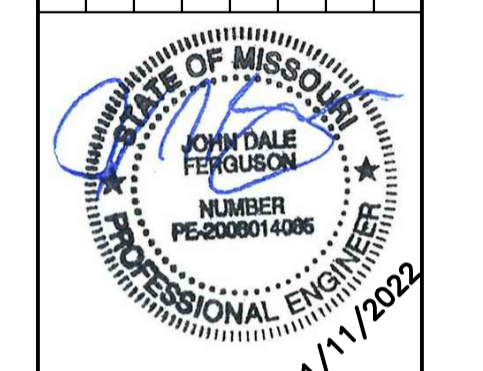
- ALL DIMENSIONS SHOWN ARE TAKEN TO FACE UNLESS OTHERWISE NOTED
- \* INDICATES OPTIONAL EQUIPMENT
- KES TO VERIFY ALL BLOCKING FOR WALL MOUNTED EQUIPMENT AS REQUIRED BY GENERAL NOTE 9 ON A1.0 PRIOR TO INSTALLATION

*Signature*  
SIGNATURE

SEE SHEET K2.1 FOR EQUIPMENT SCHEDULE

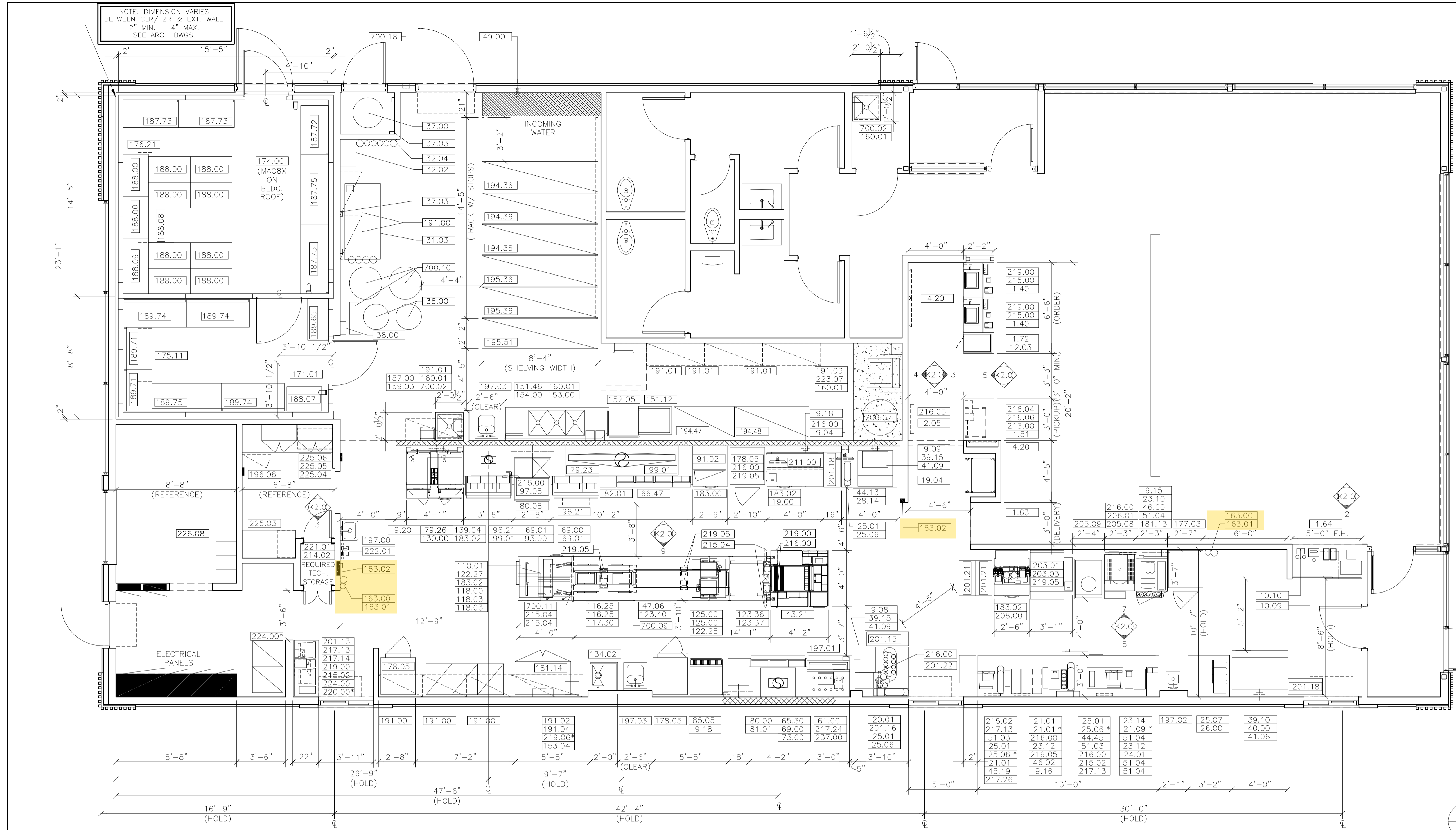
PRJ2023-00032

REV	DATE	DESCRIPTION

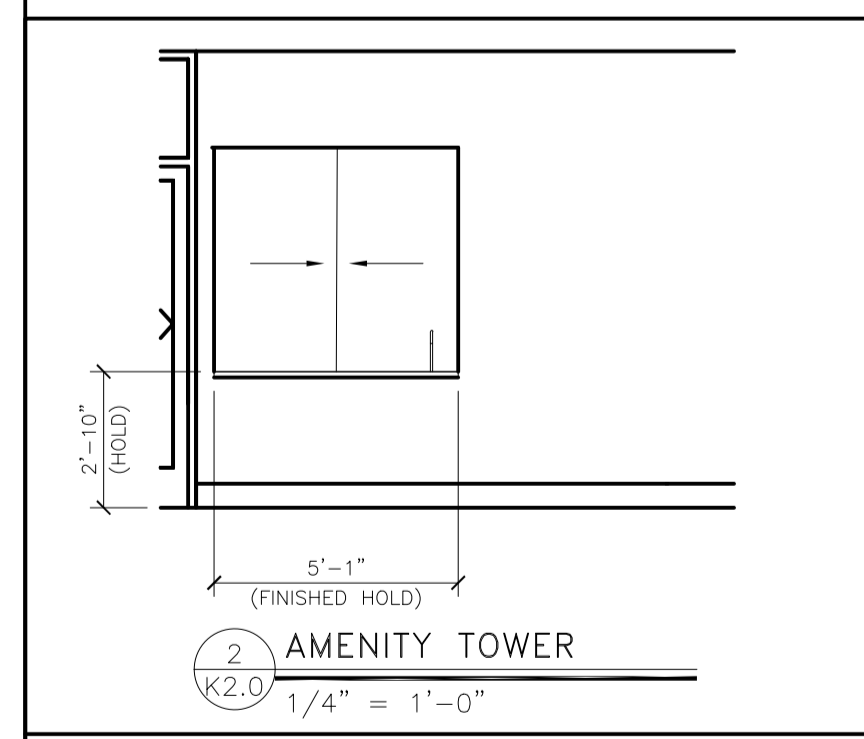


PREPARED FOR: McDonald's USA, LLC  
 These drawings and specifications are the confidential and proprietary property of McDonald's USA, LLC and shall not be copied or reproduced without written authorization from McDonald's USA, LLC. Use of these drawings for reference or example on another project requires the consent of McDonald's USA, LLC. The contract documents for use on another project is not authorized.

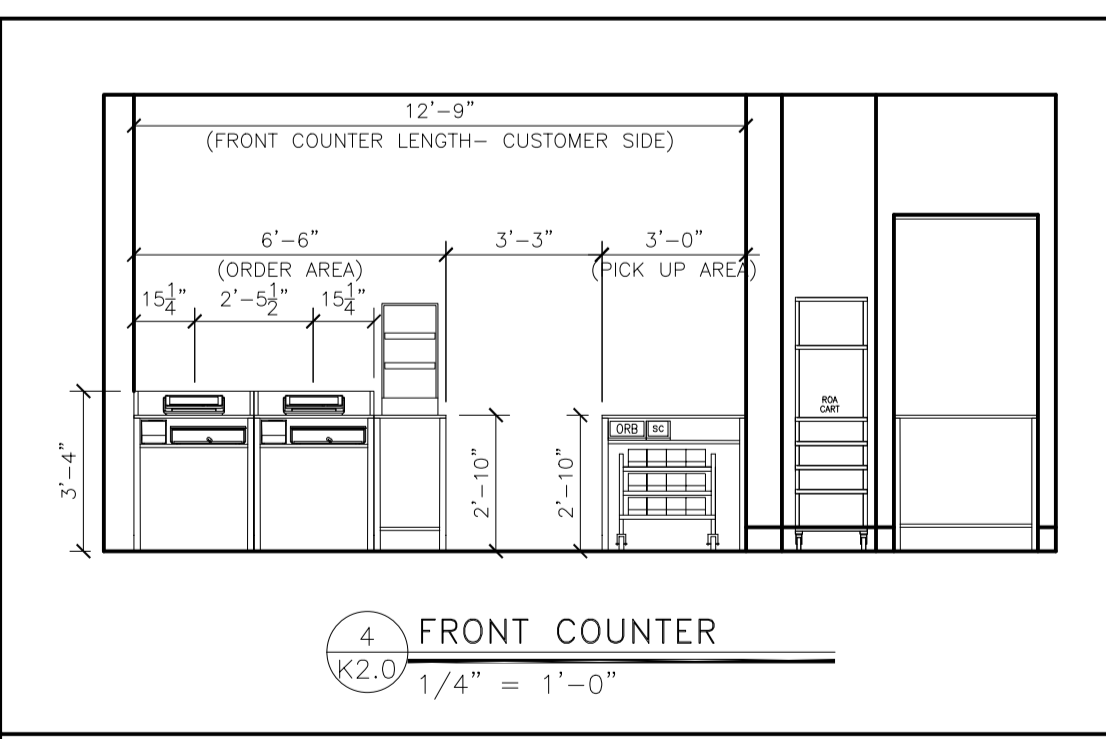
TITLE	2022 STANDARD BUILDING - BB20
DESCRIPTION	4597 - WOOD/WOOD WOOD BEARING WALLS W/HARDBOARD SIDING WOOD ROOF TRUSS FRAMING E.J.F.S./BATTEN/HARDBOARD SIDING EXTERIOR FINISH
SHEET NO.	024-1290.00.0
SHEET NO.	K2.0
KITCHEN PLAN	



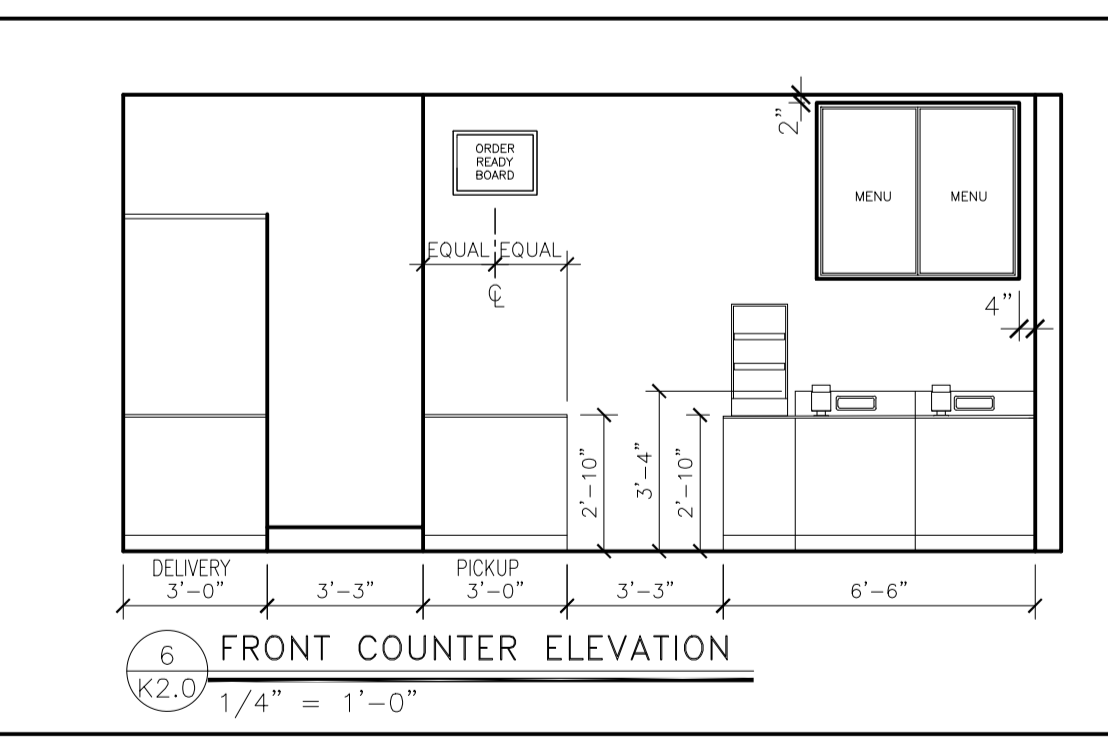
1 KITCHEN EQUIPMENT PLAN  
1/4" = 1'-0"



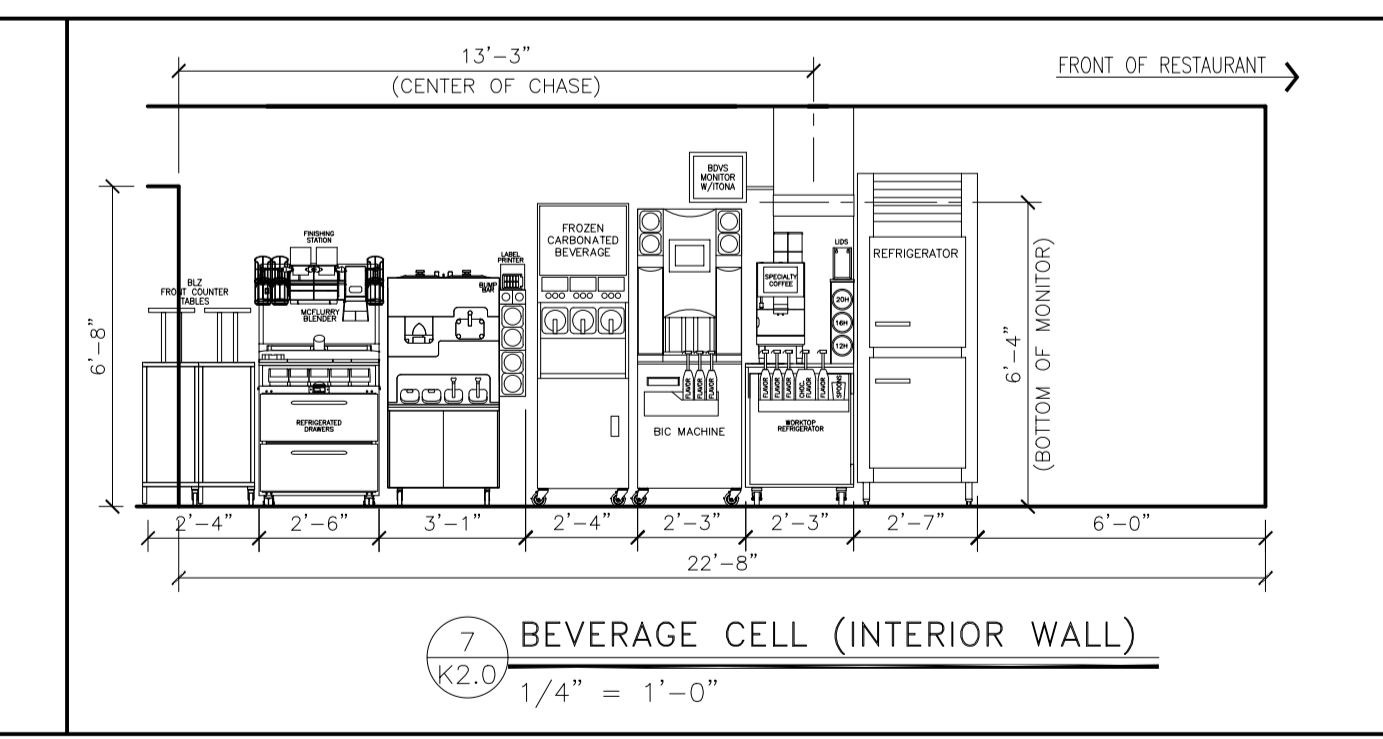
2 AMENITY TOWER  
1/4" = 1'-0"



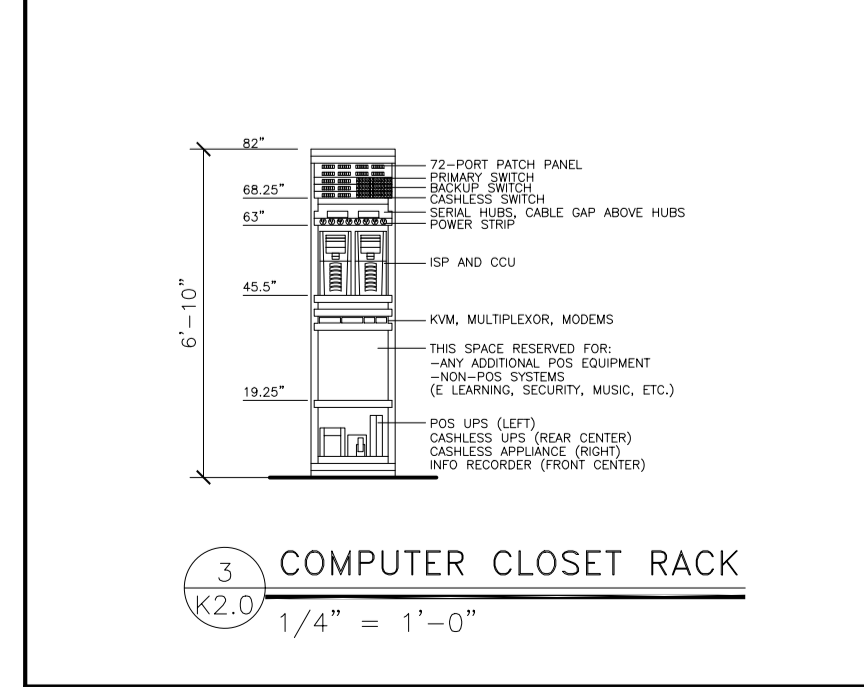
4 FRONT COUNTER  
1/4" = 1'-0"



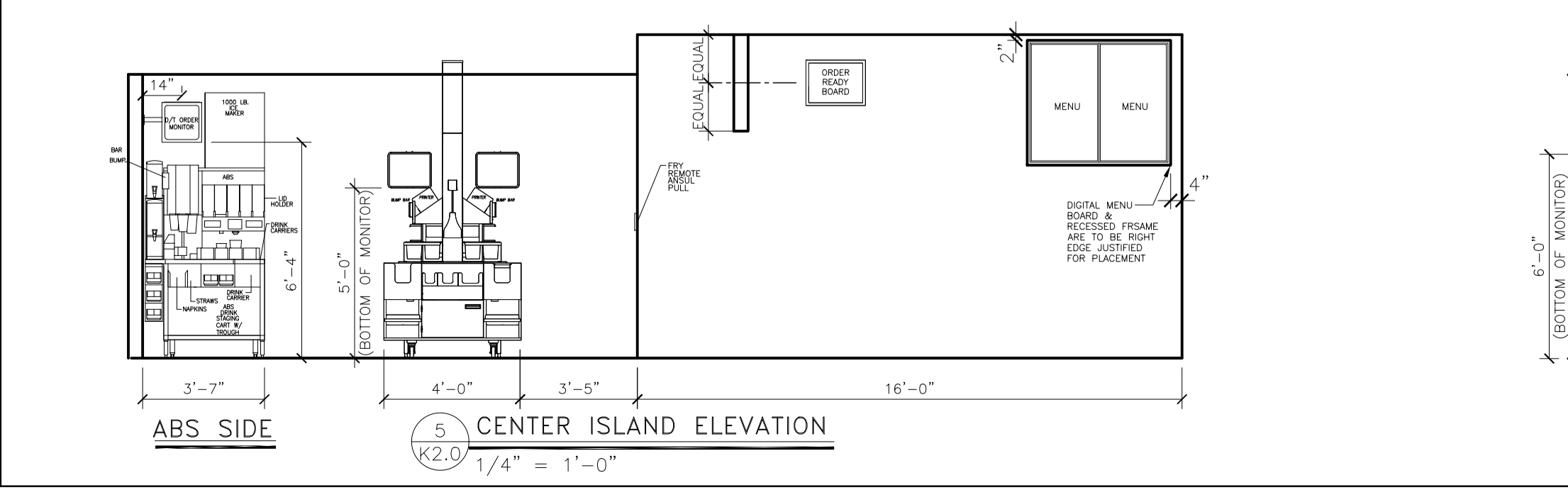
6 FRONT COUNTER ELEVATION  
1/4" = 1'-0"



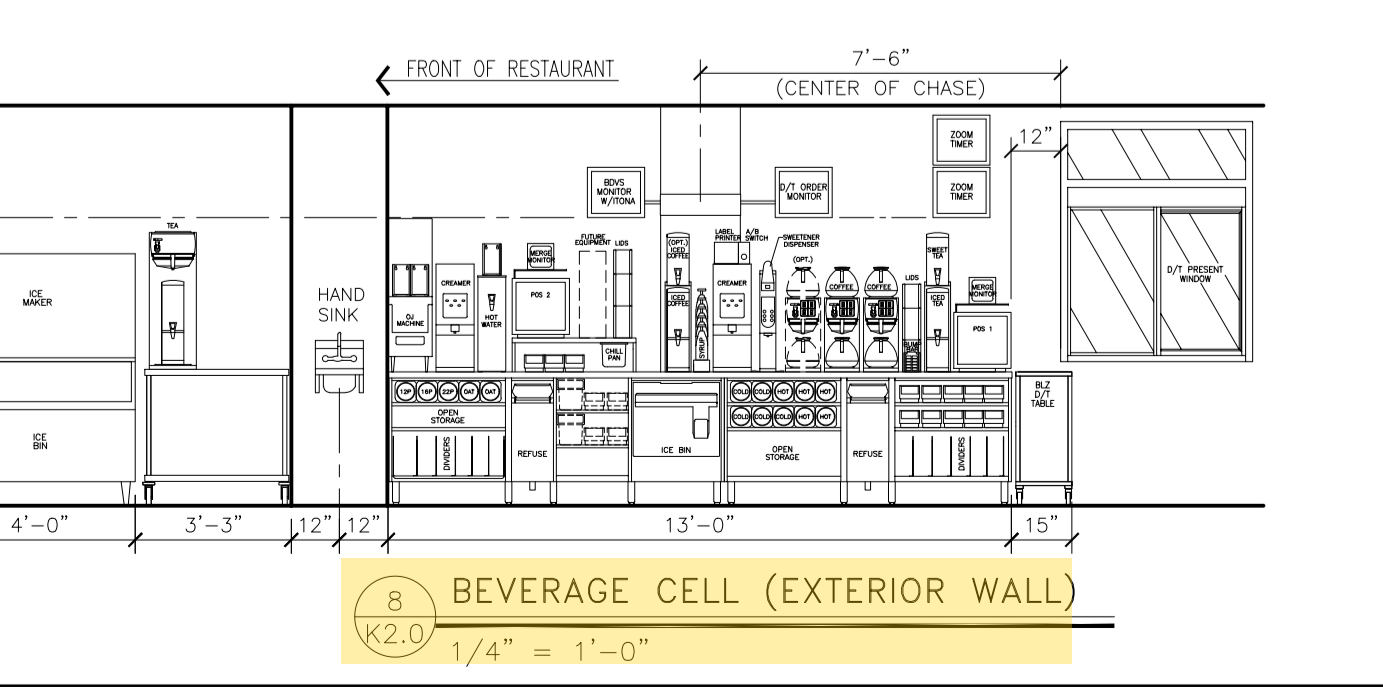
7 BEVERAGE CELL (INTERIOR WALL)  
1/4" = 1'-0"



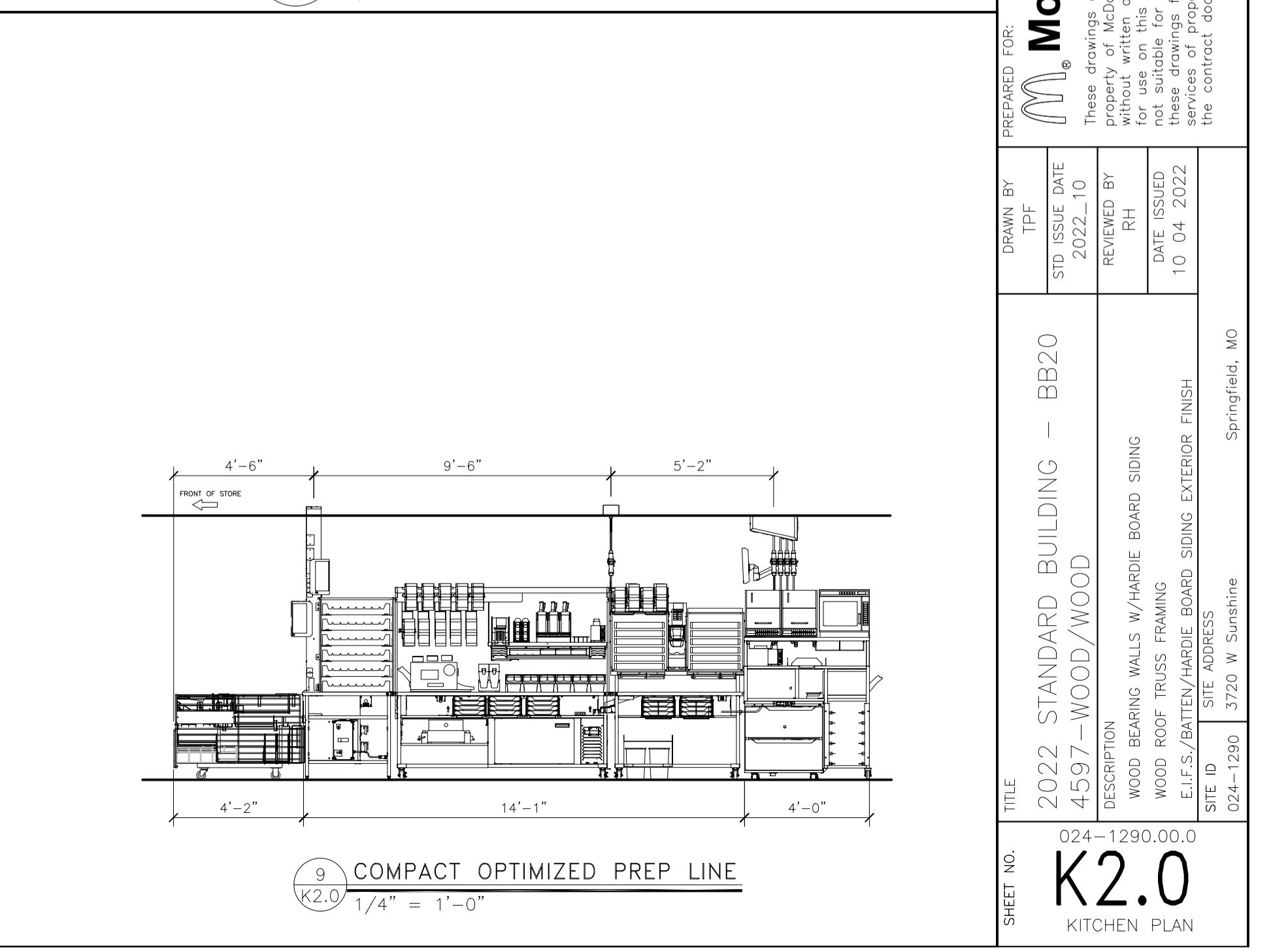
3 COMPUTER CLOSET RACK  
1/4" = 1'-0"



5 CENTER ISLAND ELEVATION  
1/4" = 1'-0"



8 BEVERAGE CELL (EXTERIOR WALL)  
1/4" = 1'-0"



9 COMPACT OPTIMIZED PREP LINE  
1/4" = 1'-0"

REVIEWED FOR COMPLIANCE WITH THE CITY CODE, ADOPTED BUILDING CODES, ZONING ORDINANCE AND DESIGN STANDARDS. THIS REVIEW AND APPROVAL DOES NOT RELIEVE THE DEVELOPER OR HIS AGENTS OF ANY RESPONSIBILITY FOR COMPLIANCE WITH ALL APPLICABLE REQUIREMENTS OR ADDRESS OR OVERRULE THE REQUIREMENTS OF OTHER JURISDICTIONS OR AGENCIES, UNLESS SPECIFICALLY NOTED OTHERWISE.

04/25/23  
DATE

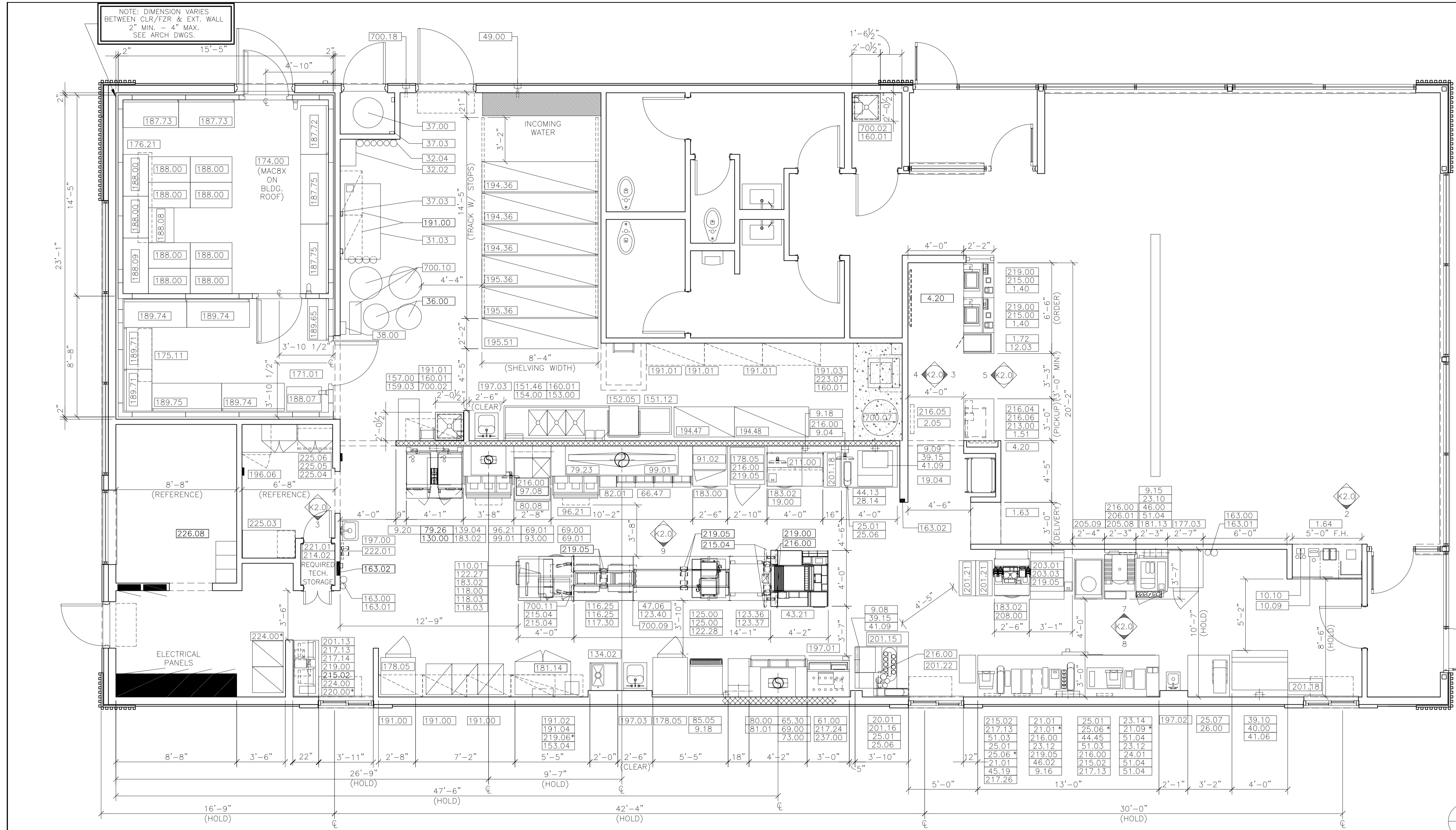
DRAWING NOTES

- ALL DIMENSIONS SHOWN ARE TAKEN TO FACE UNLESS OTHERWISE NOTED
- \* INDICATES OPTIONAL EQUIPMENT
- KES TO VERIFY ALL BLOCKING FOR WALL MOUNTED EQUIPMENT AS REQUIRED BY GENERAL NOTE 9 ON A1.0 PRIOR TO INSTALLATION

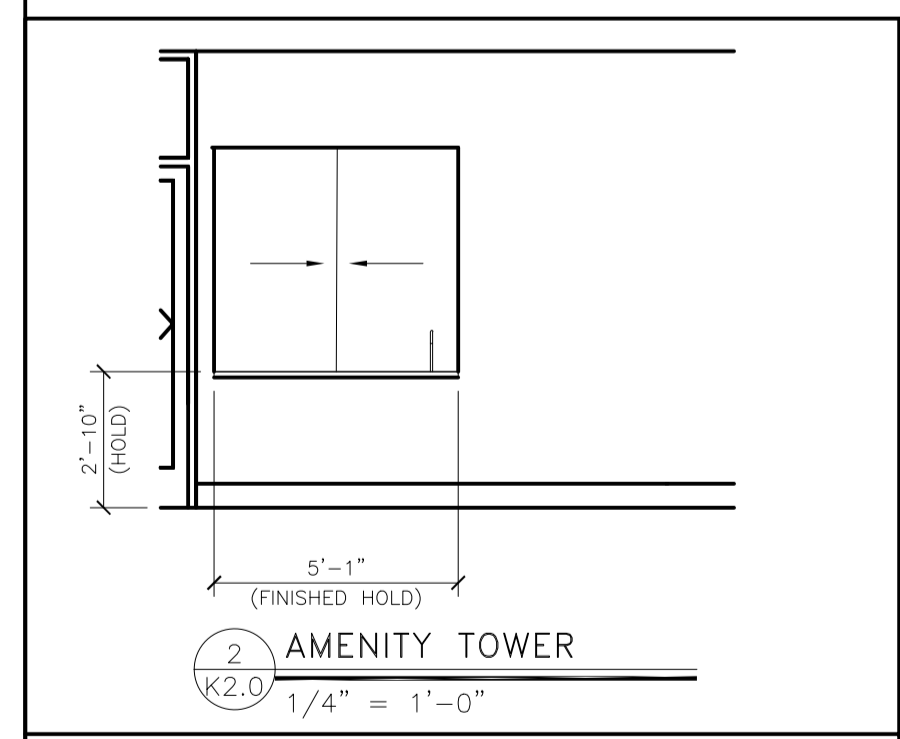
*Signature*  
SIGNATURE

SEE SHEET K2.1 FOR EQUIPMENT SCHEDULE

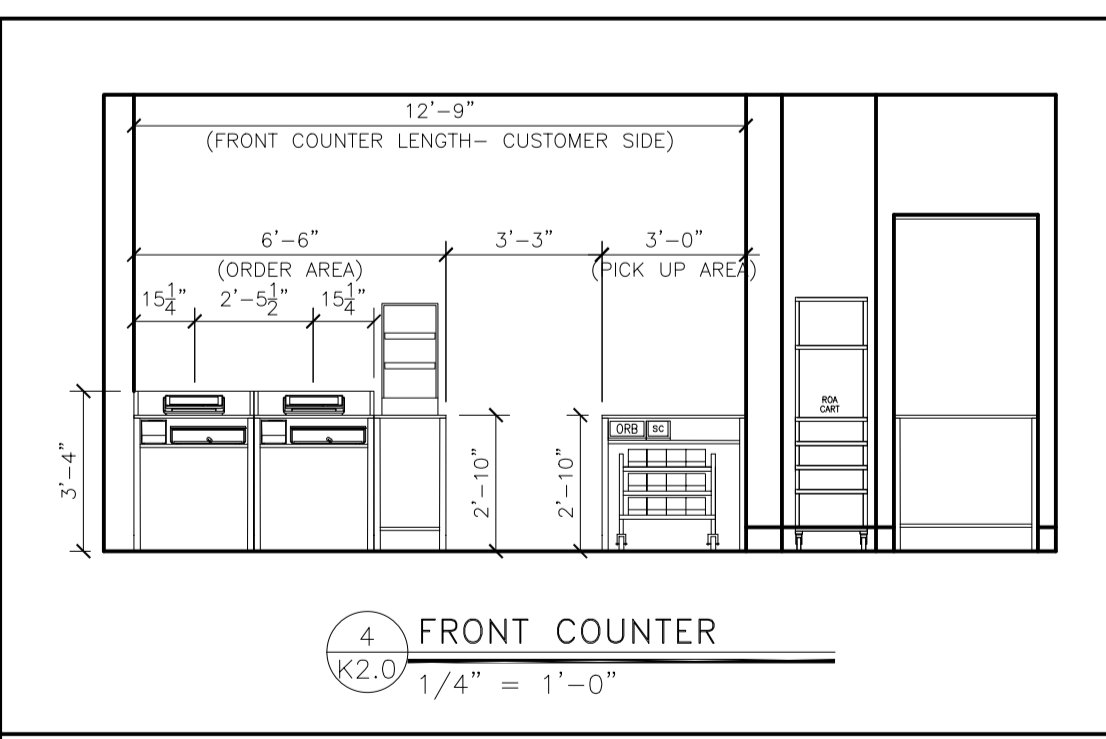
PRJ2023-00032



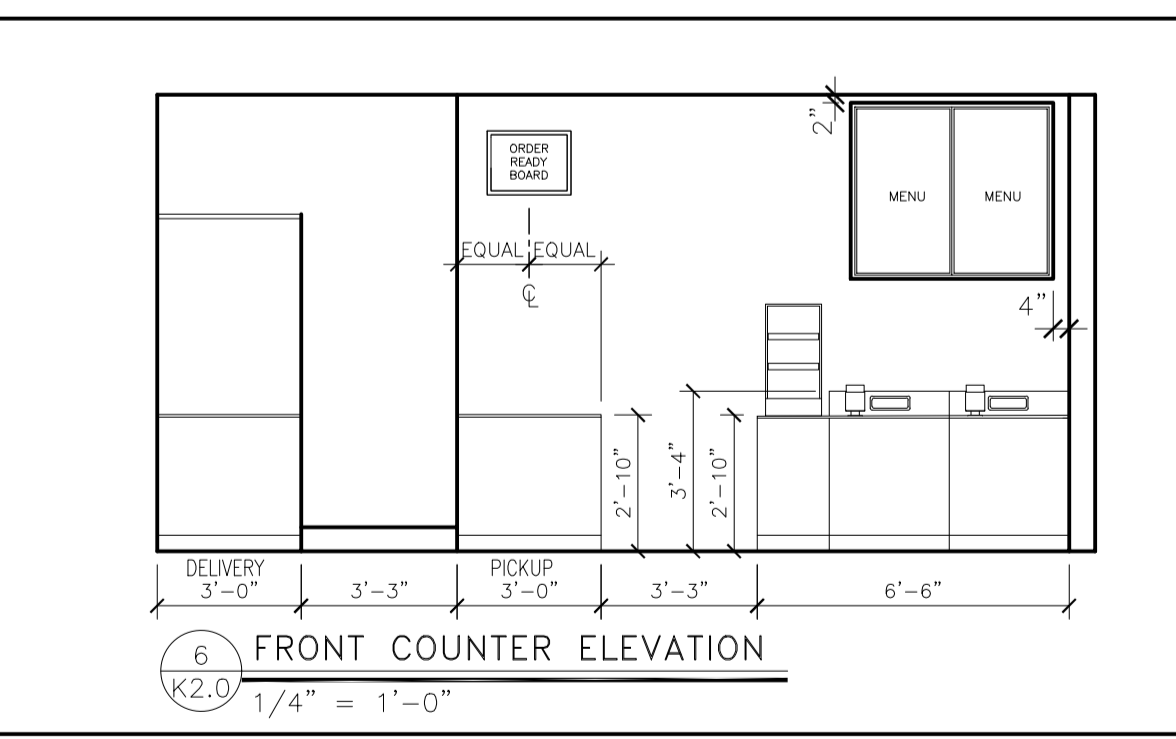
1 KITCHEN EQUIPMENT PLAN  
1/4" = 1'-0"



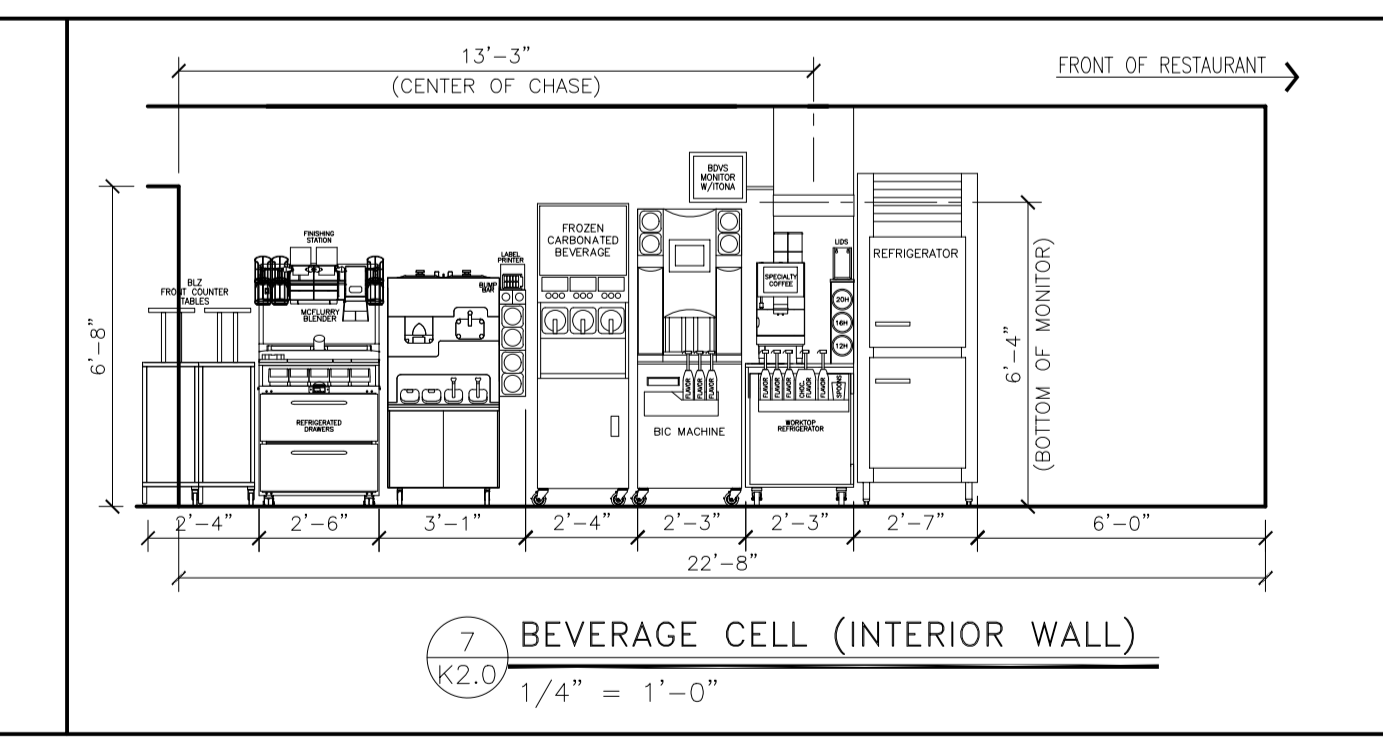
2 AMENITY TOWER  
1/4" = 1'-0"



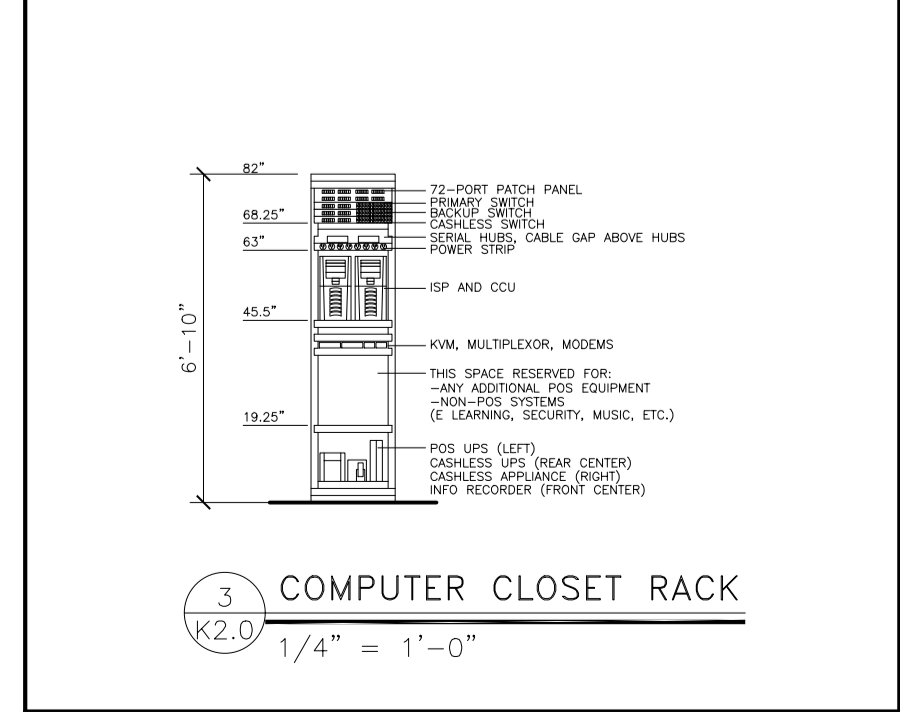
4 FRONT COUNTER  
1/4" = 1'-0"



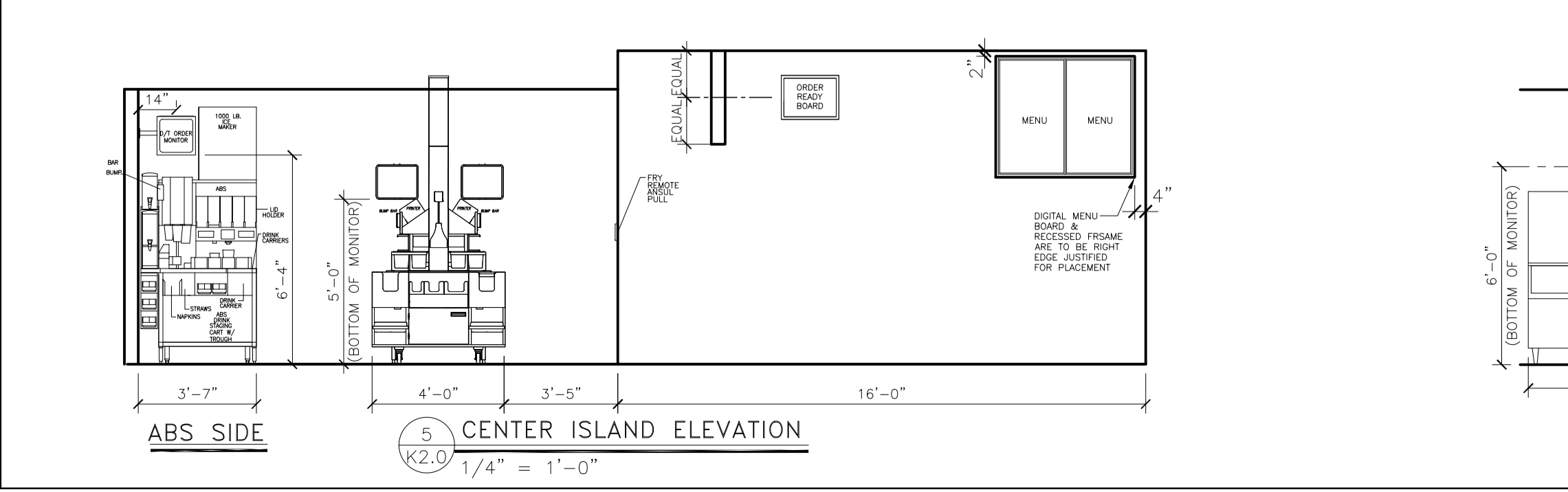
6 FRONT COUNTER ELEVATION  
1/4" = 1'-0"



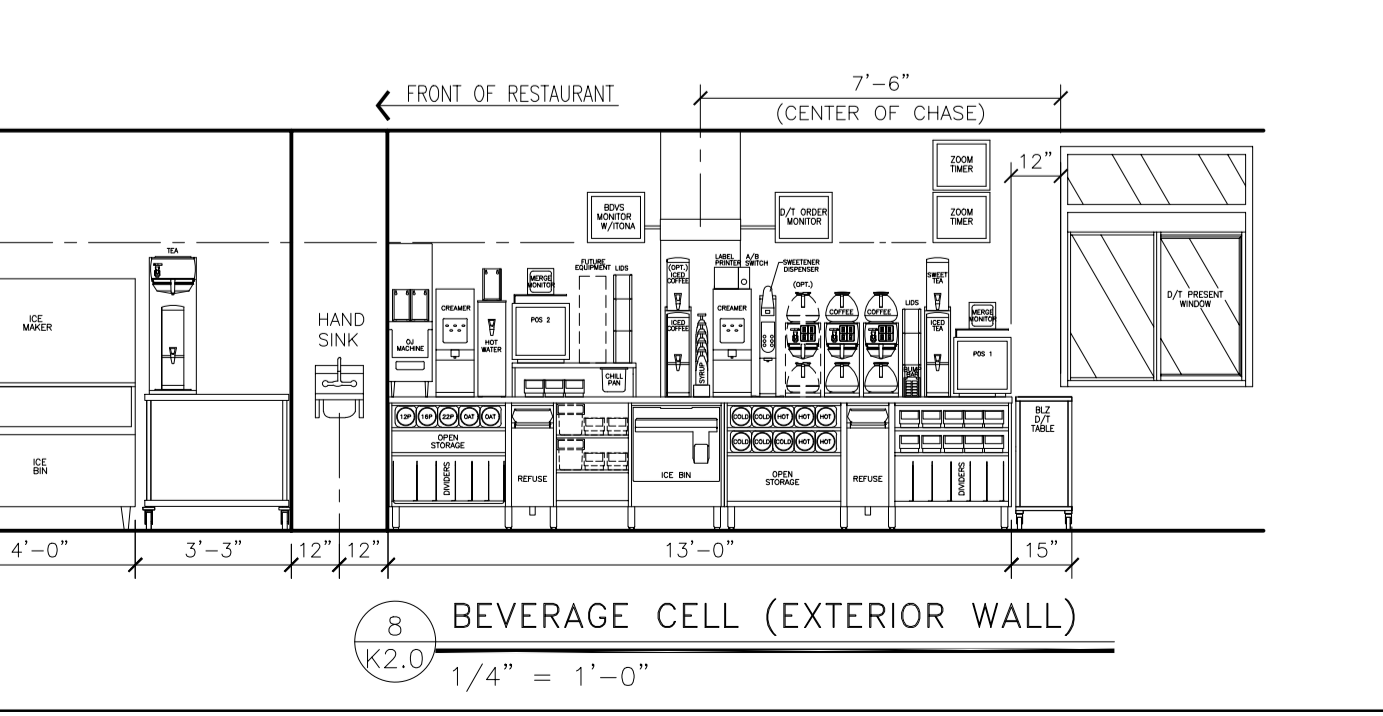
7 BEVERAGE CELL (INTERIOR WALL)  
1/4" = 1'-0"



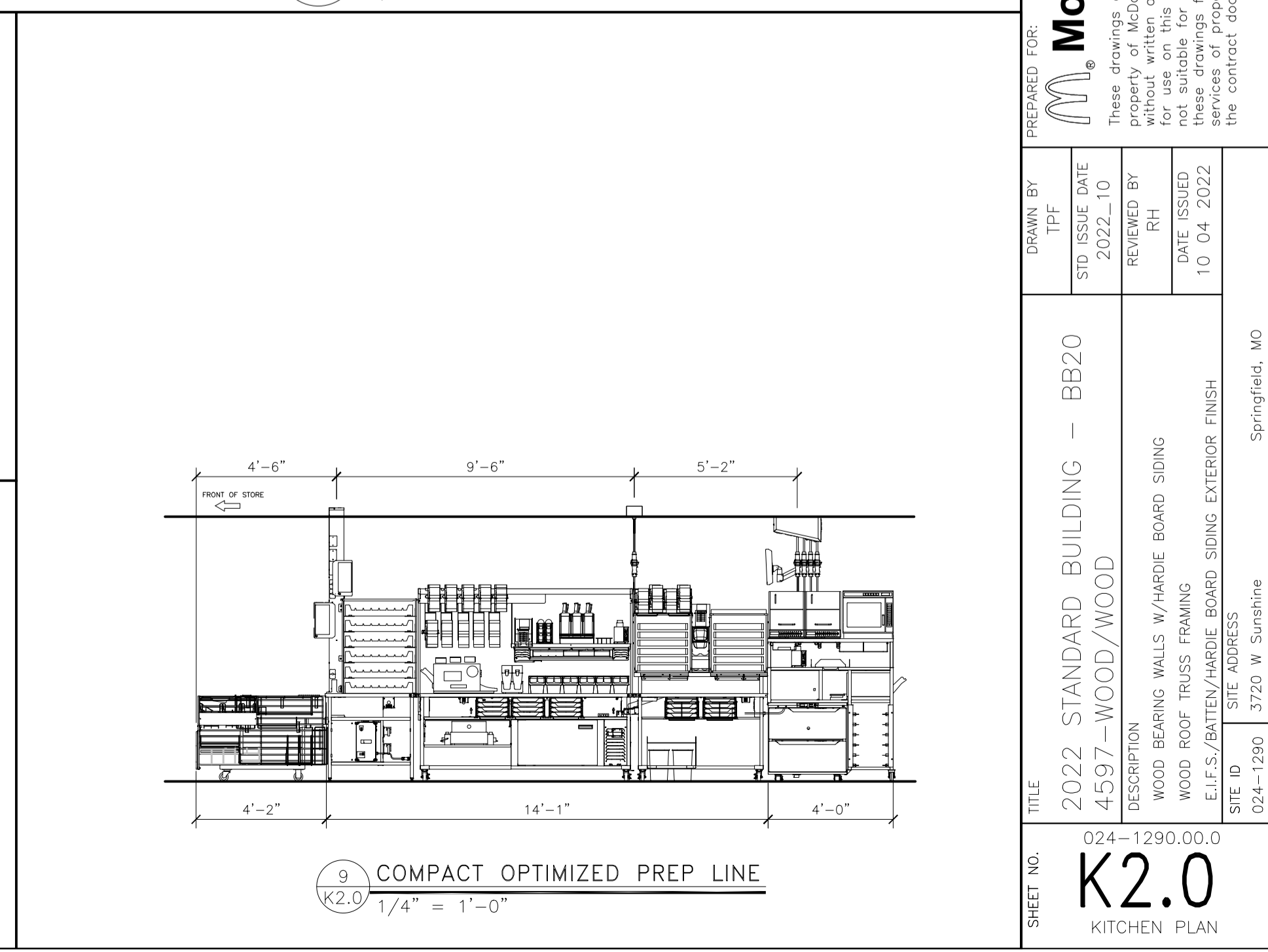
3 COMPUTER CLOSET RACK  
1/4" = 1'-0"



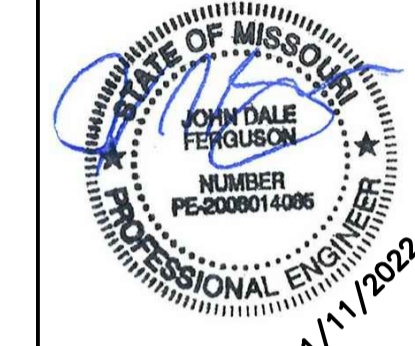
5 CENTER ISLAND ELEVATION  
1/4" = 1'-0"



8 BEVERAGE CELL (EXTERIOR WALL)  
1/4" = 1'-0"



9 COMPACT OPTIMIZED PREP LINE  
1/4" = 1'-0"



McDonald's USA, LLC  
These drawings and specifications are the confidential and proprietary property of McDonald's USA, LLC and shall not be copied or reproduced without written authorization. The contractor shall be responsible for obtaining all necessary permits and approvals. Use of these drawings for reference on another project requires the contractor to obtain written permission from McDonald's USA, LLC. The contractor shall be responsible for ensuring that the contract documents for use on another project are not authorized.

TITLE: 2022 STANDARD BUILDING - BB20  
DESCRIPTION: 4597 - WOOD/WOOD  
WOOD BEARING WALLS W/HARDBOARD SIDING  
WOOD ROOF TRUSS FRAMING  
E.I.F.S./BATTEN/HARDBOARD SIDING EXTERIOR FINISH  
SITE ID: 024-1290.000  
024-1290.000  
K2.0  
KITCHEN PLAN

REVIEWED FOR COMPLIANCE WITH THE CITY CODE, ADOPTED BUILDING CODES, ZONING ORDINANCE AND DESIGN STANDARDS. THIS REVIEW AND APPROVAL DOES NOT RELIEVE THE DEVELOPER OR HIS AGENTS OF ANY RESPONSIBILITY FOR COMPLIANCE WITH ALL APPLICABLE REQUIREMENTS OR ADDRESS OR OVERRULE THE REQUIREMENTS OF OTHER JURISDICTIONS OR AGENCIES, UNLESS SPECIFICALLY NOTED OTHERWISE.

*[Signature]*  
DATE 04/25/23  
PRJ2023-00032

### EQUIPMENT SCHEDULE

ITEM	QTY	DESCRIPTION	MANUFACTURER	MODEL #	UL	NSF	FURNISHED	GENERAL REMARKS	SPECIAL REQUIREMENTS
1.40	2	SERVICE POD - 30"	DECOR	SEE PLAN	-	2	GC	-	-
1.51	1	PICKUP POD - 30"	DECOR	SEE PLAN	-	2	GC	-	-
1.63	1	MODELIVERY PICKUP COUNTER	DECOR	SEE PLAN	-	2	GC	-	-
1.64	1	AMENITY TOWER	GC	SEE PLAN	-	2	GC	-	-
1.72	1	DISPLAY CASE BASE CABINET - 18"	DECOR	SEE PLAN	-	2	GC	-	-
2.05	1	UNDER COUNTER CART - 24"W x 18"D FRONT COUNTER	INTERMETRO	UC18-DMS	-	2	KES	-	-
4.20	3	MENUBOARD - DIGITAL	LG	49SH7DB	-	-	AT&T	-	-
9.04	1	UTILITY CHASE - WALL VERSION	KES	6"x6"x76"	-	2	KES	CHASE TO BE 2-SIDED IF USED IN DRIVE-THRU BOOTH	-
9.08	1	UTILITY CHASE - ICE MAKER ON ABS VERSION	KES	5"x8"x23"	-	2	KES	CONCEALS WATER AND CONDENSING UNIT LINES	-
9.09	1	UTILITY CHASE - ICE MAKER ON TOWER VERSION	KES	4"x4"x76"	-	2	KES	CONCEALS WATER AND CONDENSING UNIT LINES	-
9.15	1	UTILITY CHASE - FFDT INTERIOR WALL	KES	20"x5"x76"	-	2	KES	4 SECTION CHASE FOR BUYOUT RECEPTACLES, POS, CO2 AND WATER	-
9.16	1	UTILITY CHASE - FFDT EXTERIOR WALL	KES	20"x5"x76"	-	2	KES	4 SECTION CHASE FOR BUYOUT RECEPTACLES, POS AND WATER	-
9.18	2	UTILITY CHASE - WALL VERSION	KES	4"x4"x82"	-	2	KES	CHASE FOR BULK OIL LINES, MOUNT AT 2'-0"	-
9.20	1	UTILITY CHASE - COMBI CELL	KES	4"x8"x84"	-	2	KES	CHASE FOR BUYOUT RECEPTACLES AND WATER	-
10.09	1	MAPKIN DISPENSER - DROP-IN	GEORGIA PACIFIC	44219	-	2	KES	-	-
10.10	1	CO2 DRIVEN KETCHUP DISPENSER	PERFECTION	MCD-1	-	2	KES	-	-
12.03	1	BAKED GOODS DISPLAY CASE - 14"	ANTUNES	DC-14	-	2	KES	-	-
19.00	1	DELIVERY STAGING TECH CENTER - 48"	INTERMETRO	MCD3048-DDSTC	-	2	KES	-	-
19.04	1								
20.01	1	AUTOMATED BEVERAGE SYSTEM 2.0	IMI CORNELIUS	621058990LON	-	-	KES	INSTALLATION KIT INCLUDES STAINLESS STEEL CHASE & DATA LINE	-
21.01	3	COFFEE BREWER (THERMAL POTS)	BUNN-O-MATIC	AXIQM-DV-3	E32066	4	KES	W/ELECTRONIC CONTROLLER FOR CONVERSION TO LOW OR HIGH VOLTAGE	-
21.09	1	HOT WATER DISPENSER	BUNN-O-MATIC	HW2	E32066	4	KES	-	-
23.10	1	ESPRESSO BREWER	FRANKE	FM850	-	4	KES	-	-
23.12	2	COFFEE CREAM DISPENSER	SURESHOT	AC110-PC-51	E217698	20	KES	-	-
23.14	1	SUGAR/SWEETENER DISPENSER	SURESHOT	AC2-GP-30	E217698	18	KES	-	-
24.01	1	ORANGE JUICE DISPENSER	TAYLOR	CO09	-	18	KES	-	-
25.01	4	SUMLINE ICED BEVERAGE DISPENSER	BUNN-O-MATIC	100-N	E32066	4	KES	KES TO VERIFY EXACT QUANTITY PER MARKET	-
25.06	4	SUMLINE ICED BEVERAGE DISPENSER - SHORT	BUNN-O-MATIC	100-N LP	E32066	4	KES	KES TO VERIFY EXACT QUANTITY PER MARKET	-
25.07	1	INFUSION TEA BREWER - MIS	BUNN-O-MATIC	ITCB-DV	E32066	4	KES	PROVIDED WITH BREWER, INSTALLATION KIT AND TDO-N BOOSTER	-
26.00	1	TEA BREWER TABLE - 30"x36"	ISS SHELVE	WST1756C	-	2	KES	-	-
28.14	1	SODA TOWER - RECIRCULATING - 10 VALVE - LEVER CONTROL	IMI CORNELIUS	ED250BZ	SA7493	18	KES	-	-
31.03	1	SODA SYSTEM PACKAGE B.I.B.(RECIRCULATING - 3 TOWERS) - REMOTE	MULTIPLX	50GR04	E121876	18	KES	-	-
32.02	1	REVERSE OSMOSIS WATER FILTRATION SYSTEM - TANKLESS	EVERPURE	ENVI-RO-600	-	-	KES	FOR COFFEE MAKER, ESPRESSO MACHINE, AND RAPID BUN STEAMER	-
32.04	1	WATER FILTRATION SYSTEM	EVERPURE	EV937-26	-	-	KES	-	-
36.00	2	BULK COKE	CHART INDUSTRIES	10667511	-	18	MANU-FACTURER	SYRUP LINES BY CHART INDUSTRIES	-
37.00	1	BULK CO2 - 750 LB.	CHART INDUSTRIES	CARBO-MAX 750	-	-	MANU-FACTURER	-	-
37.03	2	CO2 SAFETY SYSTEM	SEE RMKS	-	-	-	KES	SEE MECHANICAL DRAWINGS	INCLUDES DETECTOR AND (4) AV ALARMS
38.00	1	CLEAN IN PLACE PANEL	CHART INDUSTRIES	10667431	-	18	MANU-FACTURER	-	-
39.10	1	ICE MACHINE - 1400 LB.	MANITOWOC	HY1494N3/ B970	SA4027	12	KES	USE HEADMASTER KIT K00221	-
39.15	2	ICE MACHINE - 1000 LB.	MANITOWOC	IB1094VC	SA4027	12	KES	CONDENSER: ICVD-1195-263	-
40.00	1	ICE MACHINE CHASE	KES	4"x6"x48"	-	2	KES	CONCEALS WATER AND CONDENSING UNIT LINES	-
41.06	1	ICE MACHINE REMOTE CONDENSER - 1000 LB.	MANITOWOC	JC-1395	SA4027	12	KES	-	-
41.09	2	ICE MACHINE REMOTE CONDENSER - 1400 LB.	MANITOWOC	ICVD-1195-263	SA4027	12	KES	-	-
43.21	1	OPTIMIZED ORDER ASSEMBLY TABLE	KES	90001	E152097	2	KES	-	-
44.45	1	CENTER ISLAND- 48"	KES	CMFY-48	-	2	KES	-	-
44.45	1	MEDIUM RISER SHELF - 31" x 43"	KES	-	-	2	KES	-	-
45.19	1	MODULAR BEVERAGE CABINET - 13'-0"	KES	-	-	2	KES	-	-
46.00	1	CUP DISPENSER VERTICAL 3 CUP	KES	-	-	2	KES	-	-
46.02	1	SYRUP BOTTLE RACK - (5) SYRUP PUMPS	PRONTO	-	-	2	KES	-	-
47.06	1	CHILLED RAIL	KES	-	-	7	KES	LOCATED UNDER PREP TABLE OVERSHELF	-
49.00	1	CO2 FILL BOX - 6 1/2"W x 18"H	CHART INDUSTRIES	8512629	-	-	MANU-FACTURER	SEE EXTERIOR ELEVATIONS FOR MOUNTING HEIGHT. INSTALLED BY GC	-
51.03	2	CUP LID HOLDER 3 HIGH S/S	KES	-	-	2	KES	-	-
51.04	4	CUP LID HOLDER SINGLE STACK 8" HIGH	KES	-	-	2	KES	-	-
61.00	1	FRY BAGGING STATION 36"	KES	FB01-4	E99018	2	KES	-	-
65.30	1	3-VAT LOV FRYER - ELECTRIC - F/F/F	HENNY PENNY	LVE-203	E30993	4	KES	-	-
66.47	1	4-VAT LOV FRYER - ELECTRIC - S/S/S/S	HENNY PENNY	LVE-204	E30993	4	KES	-	-
69.00	2	CAPTURE JET PLENUM - FRYER	HALTON	CJP-F	MH27807	2	KES	ATTACH TO UNIVERSAL EXHAUST HOOD	-
69.01	2	CAPTURE JET PLENUM - GRILL	HALTON	CJP-G	MH27807	2	KES	ATTACH TO UNIVERSAL EXHAUST HOOD	-
73.00	1	UNIVERSAL EXHAUST HOOD 3-VAT FRYER	KES	UH-50	MH12755	2	KES	-	-
79.23	1	UNIVERSAL EXHAUST HOOD FULL-CLAM/4-VAT FRYER	KES	UH-122	MH12755	2	KES	-	-
79.26	2	VENTLESS HOOD FOR COMBI OVEN	HALTON	COV	E325060	2	KES	-	-
80.00	1	MECHANICAL CHASE	KES	9"x18" SGCL	E163328	2	KES	-	-
81.01	1	PRODUCT LANDING SHELF - SOLID TOP	KES	9"x32" SGCL	E163328	2	KES	-	-
82.01	1	LANDING TABLE WITH POWER	KES	-	-	2	KES	-	-
85.05	1	FROZEN FRY DISPENSER	RAM	280-FP	E140753	4	KES	-	-
91.02	1	WALL MOUNT FREEZER UNIT-SINGLE WIDE-HIGH CAPACITY	KES	HCWF1	SA7329	7	KES	AIR-COOLED, SELF-CONTAINED - MOUNT BOTTOM AT 51" AFF	HCWF1.99A INSTALL HARDWARE KIT REQUIRED
93.00	1	UNIVERSAL EXHAUST HOOD FULL-CLAM GRILL	KES	UH-43	MH12755	2	KES	-	-
96.21	2	36" NEXT GEN 3-PLATEN CLAMSHELL GRILL - ELECTRIC	GARLAND	ME-3PX	E28898	4	KES	-	-
97.08	1	MEAT FREEZER - DOUBLE WIDE - HIGH CAPACITY - RIGHT HAND	KES	HCMF30B-RH	SA6032	5	KES	AIR-COOLED, SELF-CONTAINED	-
99.01	2	GRILL TOOL ORGANIZER - 43" HOOD	KES	OBT	-	2	KES	-	-
110.01	1	OPTIMIZED BREAKFAST TABLE	KES	-	-	2	KES	-	-
116.25	2	UNIVERSAL HOLDING CABINET - HIGH DENSITY - 2-SIDED - PIN & SLEEVE	PRINCE CASTLE	UHC6PT-22MCD	-	4	KES	ETL RATINGS: SAFETY = 3197509CHI-003, SANITATION = 3197509CHI-004	-
117.30	1	UHC TABLE COPL - 2 SIDED - 51"D x 34"W - PIN&SLEEVE	KES	91011	-	2	KES	-	-
118.00	1	Q'ING OVEN - PIN & SLEEVE	AMANA	MC23MPW2	E40456	4	KES	-	-
118.03	2	Q'ING OVEN - PIN & SLEEVE	ACP	MCMOC24	-	4	KES	-	-
122.27	1	NEXT GEN UNIVERSAL RADIANT TOASTER - PIN & SLEEVE	ANTUNES	HRT-5H	-	4	KES	-	-
122.28	1	NEXT GEN UNIVERSAL CONTACT TOASTER - PIN & SLEEVE	ANTUNES	HCT-5H	-	4	KES	-	-
123.36	1	EGU TABLE - COPL	KES	90165	-	2	KES	-	-
123.37	1	BREAKER PANEL - 125 AMP - 1 PHASE - EQUIPMENT MOUNTED	KES	-	-	-	KES	-	-
123.40	1	PREP TABLE - HD - 2-SIDED COPL - 38"D x 83 1/2" - PIN & SLEEVE W/REF.	KES	91010	-	2	KES	-	-
125.00	2	RAPID BUN STEAMER	PRINCE CASTLE	625-MFY	-	4	KES	-	-
130.00	2	COMBI OVEN	MANITOWOC	MS610-20B3LCCMD-1	-	4	KES	-	-
134.02	1	VEGETABLE SINK	KES	SK04-4	-	2	KES	-	-
139.04	1	COMBI OVEN STAND - DOUBLE WIDE	KES	-	-	2	KES	-	-
151.12	1	CLEAN DISHABLE - LEFT HAND - 28.23"	KES	SK-SPL	-	2	KES	-	-
151.46	1	SOILED DISHABLE - RIGHT HAND - 90.5" WIDE	KES	SK-SPL	-	2	KES	-	-
152.05	1	WAREWASHER	ECOLAB	QSR TSC	E5956	3	MANU-FACTURER	PROVIDE VAPOR VENT - REQUIRED	-
153.00	1	SCULLERY SHELVE KIT - 3 TIER - 14" x 36"	INTERMETRO	SHSS-4	-	2	KES	-	-
153.04	1	SMALLWARE WALL ORGANIZER	INTERMETRO	SW1812-MPS	-	2	KES	-	-
154.00	1	BRUSH CABINET	DISPLAY HOUSE	TBC-1	-	4	KES	-	-
157.00	1	TRASH LINER DISPENSER SHELF	KES	A0053	-	2	KES	-	-
159.03	1	UNIVERSAL PARTS CART - 36" W	INTERMETRO	MCD-1836UPC	-	2	KES	-	-
160.01	4	CHEMICAL SYSTEM	ECOLAB	-	-	-	MANU-FACTURER	-	-
163.00	2	FIRE EXTINGUISHER - 5 LB. - ABC	ANSUL	SEE RMKS	-	-	SEE RMKS	LOCAL ANSUL AGENT SPECIFICS, SUPPLIES & LOCATES PER LOCAL CODE	-
163.01	2	FIRE EXTINGUISHER - 6 L. - K GUARD	ANSUL	SEE RMKS	-	-	SEE RMKS	LOCAL ANSUL AGENT SPECIFICS, SUPPLIES & LOCATES PER LOCAL CODE	-
163.02	4	REMOTE ANSUL PULL	ANSUL	4835	EX3470	-	SEE RMKS	CODE MAY REQUIRE LOCAL ANSUL AGENT TO SUPPLY	-
171.01	1	WALK-IN COOLER / FREEZER FLOORLESS	NORLAKE	-	E42763	7	KES	-	-
174.00	1	REMOTE CONDENSING UNIT	BOHN	MACBXS6CA	SA4272	-	KES	BEACON II SYSTEM	-
175.11	1	COOLER EVAPORATOR	BOHN	ADT1048EB2N6MK	SA1525	-	KES	BEACON SYSTEM II EVAPORATOR	-
176.21	1	FREEZER EVAPORATOR	BOHN	LET1180BE2N6MK	SA1525	-	KES	BEACON SYSTEM II EVAPORATOR	-
177.03	1	REACH-IN REFRIGERATOR-SINGLE WIDE	BEVERAGE AIR	ER24-1AHS-34	SA2651	7	KES	-	-
178.05	3	REACH-IN REFRIGERATOR - SINGLE WIDE	BEVERAGE AIR	ER24-1AHS-34	SA2651	7	KES	-	-
181.13	1	REFRIGERATOR - SPECIALTY COFFEE - 27" WIDE	TRUE	TW-27 MCDCF1	SA3040	7	KES	RIGHT-HAND HINGED	-
181.14	1	REFRIGERATOR - WORKTOP - 48" WIDE	TRUE	TWT-48 MCD1	SA4065	7	KES	-	-
183.00	1	REFRIGERATOR/FREEZER - 2 DRAWER BASE - 30" W X 33" H	TRUE	18012498	SA4044	7	KES	-	-

### EQUIPMENT SCHEDULE

ITEM	QTY	DESCRIPTION	MANUFACTURER	MODEL #	UL	NSF	FURNISHED	GENERAL REMARKS	SPECIAL REQUIREMENTS
183.02	4	REFRIGERATOR/FREEZER - 2 DRAWER BASE - 30" W X 30" H	KE'S	18021304	SA4044	7	KES	-	-
187.72	1	FREEZER SHELVE 24" x 42" x 74" H. - 4-TIER	ISS SHELVE	FSMS/FSMA742442E	-	2	KES	-	-
187.73	2	FREEZER SHELVE 24" x 48" x 74" H. - 4-TIER	ISS SHELVE	FSMS/FSMA742448E	-	2	KES	-	-
187.75	2	FREEZER SHELVE 24" x 60" x 74" H. - 4-TIER	ISS SHELVE	FSMS/FSMA742460E	-	2	KES	-	-
188.00	10	DUNNAGE RACK 22" x 36"	INTERMETRO	HP2236PD	-	2	KES	-	-
188.07	1	UNIVERSAL STAGING CART	ISS SHELVE	WST1384Y	-	2	KES	-	-
188.08	1	DUNNAGE RACK 22" x 30"	INTERMETRO	HP2230PD	-	2	KES	-	-
188.09	1	DUNNAGE RACK 22" x 48"	INTERMETRO	HP2248PD	-	2	KES	-	-
189.65	1	COOLER SHELVE 18" x 36" x 74" H. - 4-TIER	ISS SHELVE	FSMS/FSMA741836E	-	2	KES	-	-
189.71	2	COOLER SHELVE 24" x 36" x 74" H. - 4-TIER	ISS SHELVE	FSMS/FSMA742436E	-	2	KES	-	-
189.74	3	COOLER SHELVE 24" x 54" x 74" H. - 4-TIER	ISS SHELVE	FSMS/FSMA742454E	-	2	KES	-	-
189.75	1	COOLER SHELVE 24" x 60" x 74" H. - 4-TIER	ISS SHELVE	FSMS/FSMA742460E	-	2	KES	-	-
191.00	5	VALANCE SHELVE - 18" x 36"	INTERMETRO	M1836C-MP	-	2	KES	MOUNT AT 6'-8" AFF TO SHELF BOTTOM UNLESS OTHERWISE NOTED	-
191.01	4	VALANCE SHELVE - 18" x 48"	INTERMETRO	M1848C-MP	-	2	KES	MOUNT AT 6'-8" AFF TO SHELF BOTTOM UNLESS OTHERWISE NOTED	-
191.02	1	VALANCE SHELVE - 18" x 60"	INTERMETRO	M1860C-MP	-	2	KES	MOUNT AT 6'-8" AFF TO SHELF BOTTOM UNLESS OTHERWISE NOTED	-
191.03	1	VALANCE SHELVE - 18" x 30"	INTERMETRO	M1830C-MP	-	2	KES	MOUNT AT 5'-0" AFF TO SHELF BOTTOM FOR ABOVE WASHER APPLICATION	-
191.04	1	VALANCE SHELVE - 18" x 36"	INTERMETRO	M1836C-MP	-	2	KES	MOUNT AT 5'-0" AFF TO SHELF BOTTOM -W/ST STL LINER FOR SALAD EQUIP	-
194.36	3	DRY SHELVE 26" x 100" x 84" H.-4-TIER - MOBILE	DENSTOR	-	-	2	KES	-	-
194.47	1	DRY SHELVE 26" x 52" x 84" H.- 4-TIER - FIXED	DENSTOR	-	-	2	KES	-	-
194.48	1	DRY SHELVE 26" x 64" x 84" H.- 4-TIER - FIXED	DENSTOR	-	-	2	KES	-	-
195.36	2	DRY SHELVE 26" x 100" x 84" H.-5-TIER - MOBILE	DENSTOR	-	-	2	KES	-	-
195.51	1	DRY SHELVE 26" x 100" x 84" H.- 5-TIER - FIXED	DENSTOR	-	-	2	KES	-	-
196.06	1	SAFE - STANDARD BLDG. - LEFT HINGE	NKL	BS04125FGXL-MC	-	-	OWNER	-	-
197.00	1	STAINLESS STEEL HAND SINK	ADVANCE TABCO	7-PS-61	-	2	GC	REFER TO PLUMB. DWGS. FOR DETAILS, SOAP & TOWEL DISP. BY OTHERS	PROVIDE SIDE SPLASHES (7-PS-11) WHEN REQUIRED BY LOCAL CODE
197.01	1	HAND WASH TIMER	NATIONAL CONTROLS	TMD-11715-120	E53595	-	KES	-	-
197.02	1	STAINLESS STEEL HAND SINK - SPACESAVER	ADVANCE TABCO	7-PS-22	-	2	GC		