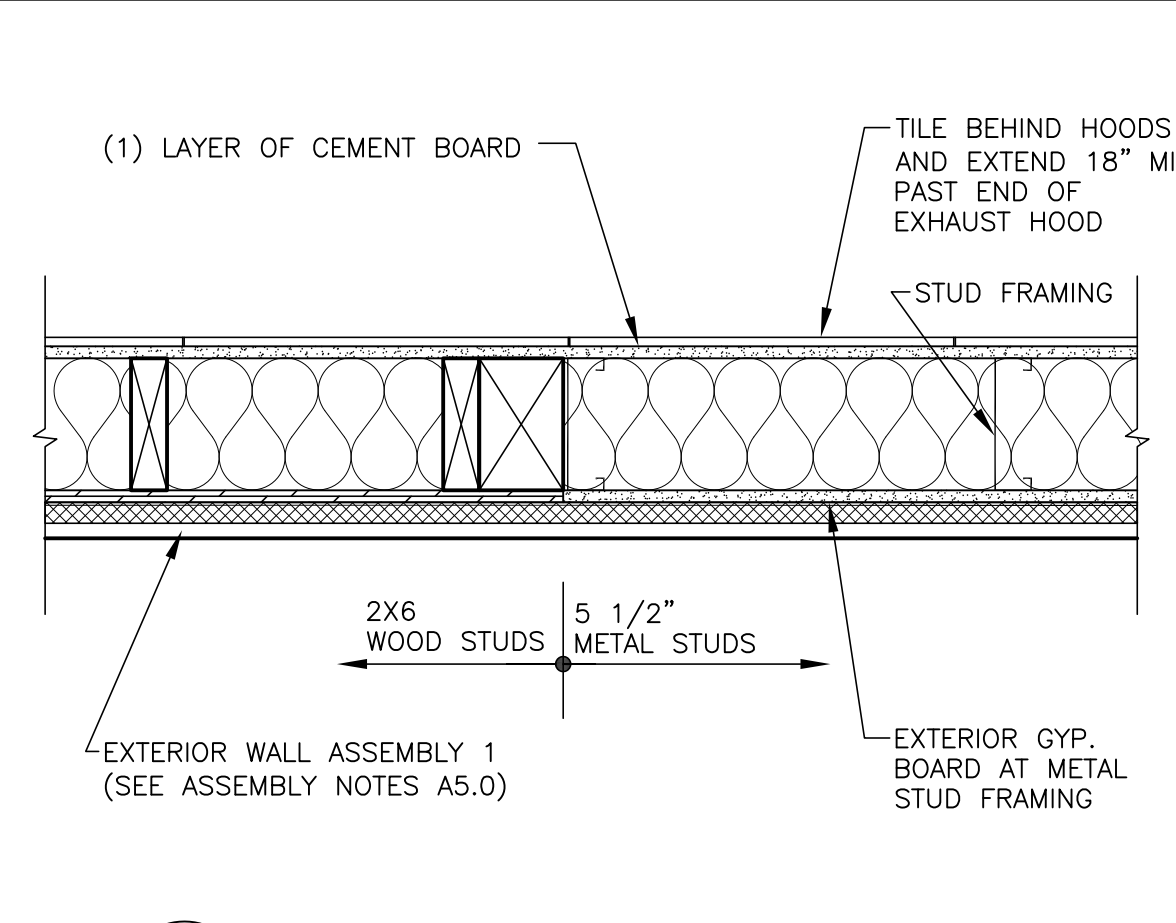
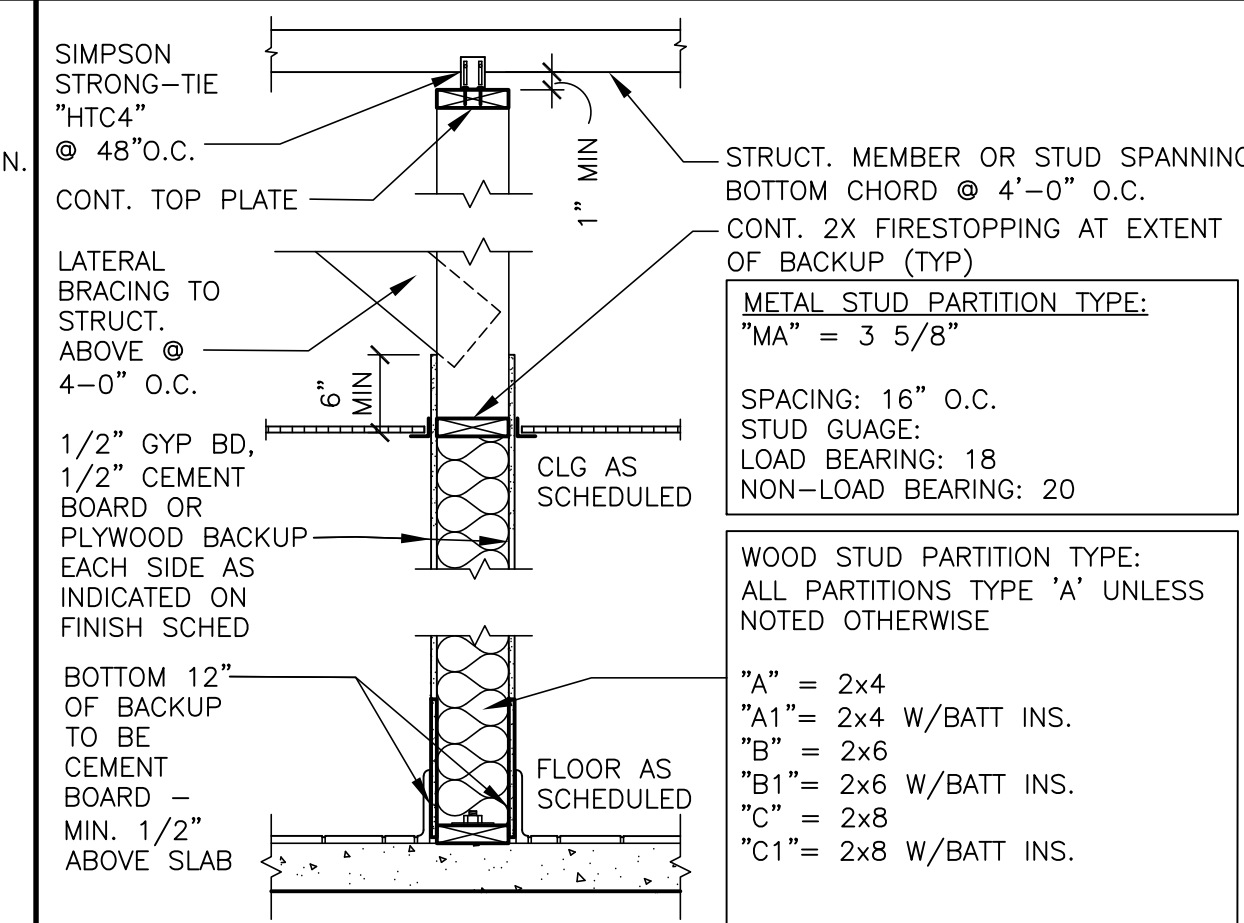


1 PARTIAL FLOOR PLAN
 1/4" = 1'-0"
 (SEE SHEET A1.1 FOR CONTINUATION OF PLAN)



3 TRANSITION DETAIL
 1 1/2" = 1'-0"



2 INTERIOR PARTITION
 3/4" = 1'-0"

KEY NOTES

- C** ALUMINUM CANOPY SYSTEM ABOVE - SEE 4/A5.0 FOR NOTES - SEE ROOF PLAN FOR DIMENSIONS, SEE ELEVATION FOR COLORS AND FASCIA LOCATIONS
- CG** G.C. TO PROVIDE 4"x4"x5'-0" HIGH STAINLESS STEEL CORNER GUARDS AT ALL EXPOSED LOCATIONS IN KITCHEN/SUPPORT AREA. CORNER GUARDS TO START AT FINISH FLOOR. ATTACH WITH WOOD SCREWS INTO WOOD BLOCKING BULLNOSE COVE BASE WHERE TILE MEETS STAINLESS STEEL CORNER - SEE DETAIL 4/A6.0
- CP** CONCRETE EQMT PAD - SEE STRUCTURAL & DETAIL 5/A6.0
- CT** WALL TILE: CERAMIC WALL TILE, SIZE: 4"x12", PATTERN: STACK BOND, GROUT: MAPEI ULTRACOLOR PLUS - JOINT TO BE 1/8" MAX. SEE DECOR DRAWINGS FOR TILE AND GROUT COLOR SPEC
- CT** WALL TILE: GROSSVILLE - COLOR BY NUMBERS, COLOR: INTUITIVE GRAY, SIZE: 4"x12", PATTERN: RUNNING BOND, GROUT: MAPEI O2 FEWTER - JOINT TO BE 1/4" MAX. USE THIS TILE WHEN HIGH LRV IS REQUIRED COORDINATE WITH McDONALD'S AREA CONSTRUCTION MANAGER
- DE** DECOR ELEMENT - VERIFY SIZE AND PLACEMENT WITH DECOR PLANS
- DS** DROPPED SOFFIT ABOVE - SEE REFLECTED CEILING PLAN
- FB** CO2 FILL BOX (EQUIPMENT SCHEDULE ITEM 49.00)
- FB** BO OPTIONAL BULK OIL FILL BOX (EQPM SCHEDULE ITEM 700.18) CONFIRM USE WITH McDONALD'S AREA CONSTRUCTION MANAGER
- FL** FLOOR LINE - CHANGE IN MATERIAL - SEE DECOR DRAWINGS
- FP** FIBERGLASS REINFORCED PLASTIC (FRP) - PANOLAM, GRAY SMOOTH, CLASS C, .075. REFER TO ROOM FINISH SCHEDULE SHEET A6.1 FOR INSTALLATION LOCATIONS. FOR ORDERING, CONTACT KIMBERLY LAWSON Kimberly_Lawson@panolam.com 1-866-925-4377
- LL** LEVEL LANDING @ EXT. DOOR W/ MAX. 2% RUNNING/CROSS SLOPE AWAY FROM BUILDING
- MS** MOP SINK - SEE DETAIL 8/A6.1 AND PLUMBING DRAWINGS.
- RL** ROOF ACCESS LADDER W/HATCH ABOVE SEE STRUCTURAL FRAMING PLAN FOR LOCATING DIMENSIONS
- WX** EXTERIOR WINDOW ASSEMBLY - SEE A2.0, A2.1 & 4/A5.0 FOR ADDITIONAL NOTES

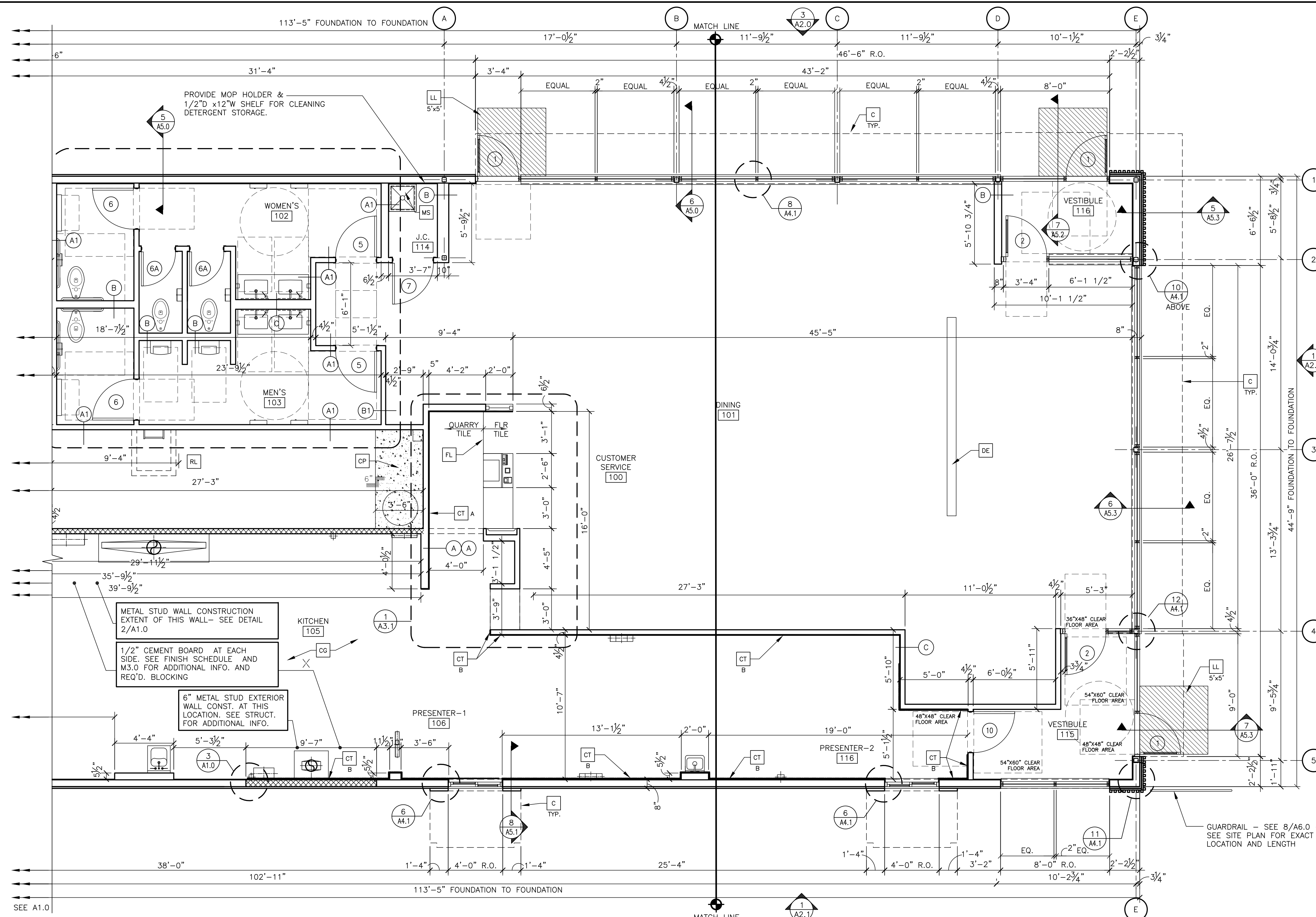
SYMBOL LEGEND

- (A) PARTITION TYPE TAG SEE 2/A1.0
- (7) DOOR TAG - SEE DOOR SCHEDULE ON A6.0
- (X) KEY NOTE
- (---) EXTENT OF WALL TILE - SEE A3.0, A4.2 & A6.1

GENERAL NOTES

1. EXTERIOR DIMENSIONS ARE TO COLUMN REFERENCE LINES AND EXTERIOR FACE OF FINISH UNLESS OTHERWISE NOTED. INTERIOR DIMENSIONS ARE TO FACE OF INTERIOR WALL BOARD.
2. SEE 4/A5.0 FOR EXTERIOR WALL ASSEMBLY TYPES. SEE 2/A1.0 FOR INTERIOR PARTITION TYPES. INTERIOR PARTITIONS ARE TYPE 'A' UNLESS NOTED OTHERWISE.
3. SEE EXTERIOR ELEVATIONS FOR WINDOW TYPES
4. SEE SHEET A6.0 FOR DOOR SCHEDULE AND SHEET A6.1 FOR ROOM FINISH SCHEDULES
5. SEE SITE PLAN FOR SIDEWALKS, RAMPS, ETC.
6. GC TO PROVIDE ADA SIGNAGE PACKAGE AND INSTALL SIGNS AT LOCATIONS AND POSITIONS INDICATED IN PACKAGE OR AS REQUIRED BY LOCAL CODES. SIGNAGE PACKAGE SUPPLIED BY: FORREST PERMA-SIGN 1-800-214-8765; 9292 1ST ST., BOX 588, NEW ROCHELLE, NY 10802; www.forrestpermasign.com
7. MAXIMUM OCCUPANCY SIGN TO BE POSTED PER LOCAL CODE. SIGN FURNISHED AND INSTALLED BY GENERAL CONTRACTOR.
8. ALL HANDSINK LOCATIONS SHALL HAVE CEMENT BOARD BACKING 48" IN HEIGHT A.F.F.
9. GC TO COORDINATE ALL REQUIRED BLOCKING FOR WALL HUNG EQUIPMENT, SHELVES, ETC. FOR PROPER INSTALLATION HEIGHTS.
10. KNOX BOX TO BE INSTALLED BY GENERAL CONTRACTOR PER LOCAL CODE AS REQUIRED. MODEL AND LOCATION TO BE COORDINATED WITH FIRE MARSHALL.
11. DASHED LINES @ DOORS, RESTROOMS, & FIXTURES REPRESENT CLEAR FLOOR MANEUVERING CLEARANCES AS REQUIRED BY THE ACCESSIBILITY CODE. CLEARANCES MUST BE MAINTAINED WITHOUT EXCEPTION. IF CONDITIONS PREVENT ANY CLEAR FLOOR SPACE FROM BEING MAINTAINED, CONTACT THE ARCHITECT FOR RESOLUTION.

			PREPARED BY: Robert Kempkes <small>ARCHITECT 1000 S. MAIN STREET SALEM, MO 64603</small>
PROJECT NO: 2022 STANDARD BUILDING - BB20	DATE ISSUED: 12-21-2022	SHEET NO: A1.0	DESCRIPTION: WOOD BEARING WALLS W/HARDBOARD SIDING WOOD ROOF TRUSS FRAMING EIFS/BATTEN/ACM PANEL/HARDBOARD SIDING
DRAWN BY: S.O.	STD ISSUE DATE: 2022_08	REVIEWED BY: R.K.	DATE ISSUED: 12-21-2022
TITLE: 2022 STANDARD BUILDING - BB20 45114 - WOOD/WOOD			SALEM, MO
McDonald's USA, LLC <small>These drawings and specifications are the confidential and proprietary property of McDonald's USA, LLC and shall not be copied or reproduced without written authorization. The contract documents were prepared in accordance with the contract documents for use on a different site or at a later time. Use of these drawings for reference or example on another project requires the contract documents for reuse on another project is not authorized.</small>			
PREPARED FOR: McDonald's USA, LLC			DATE: 08-25-23
PROJECT ADDRESS: 1000 S. Main Street			REVISED BY: ESE UPDATE
SHEET NO: A1.0 PARTIAL FLOOR PLAN			



1 PARTIAL FLOOR PLAN
 A1.1 1/4" = 1'-0"
 (SEE SHEET A1.0 FOR CONTINUATION OF PLAN)
 SEE A1.0

KEY NOTES

- C** ALUMINUM CANOPY SYSTEM ABOVE - SEE 4/A5.0 FOR NOTES - SEE ROOF PLAN FOR DIMENSIONS, SEE ELEVATION FOR COLORS AND FASCIA LOCATIONS
- CG** G.C. TO PROVIDE 4"x4"x5'-0" HIGH STAINLESS STEEL CORNER GUARDS AT ALL EXPOSED LOCATIONS IN KITCHEN/SUPPORT AREA. CORNER GUARDS TO START AT FINISH FLOOR. ATTACH WITH WOOD SCREWS INTO WOOD BLOCKING BULLNOSE COVE BASE WHERE TILE MEETS STAINLESS STEEL CORNER - SEE DETAIL 4/A6.0
- CP** CONCRETE EQMT PAD - SEE STRUCTURAL & DETAIL 5/A6.0
- CT** WALL TILE: CERAMIC WALL TILE. SIZE: 4"x12". PATTERN: STACK BOND. GROUT: MAPEI ULTRACOLOR PLUS - JOINT TO BE 1/8" MAX. SEE DECOR DRAWINGS FOR TILE AND GROUT COLOR SPEC
- CT** WALL TILE: CROSSVILLE - COLOR BY NUMBERS, COLOR: INTUITIVE GRAY; SIZE: 4"x12". PATTERN: RUNNING BOND. GROUT: MAPEI O2 PEWTER - JOINT TO BE 1/8" MAX. USE THIS TILE WHEN HIGH LRV IS REQUIRED. COORDINATE WITH McDONALD'S AREA CONSTRUCTION MANAGER
- DE** DECOR ELEMENT - VERIFY SIZE AND PLACEMENT WITH DECOR PLANS
- DS** DROPPED SOFFIT ABOVE - SEE REFLECTED CEILING PLAN
- FB** CO2 FILL BOX (EQUIPMENT SCHEDULE ITEM 49.00)

- FB** OPTIONAL BULK OIL FILL BOX (EOPM SCHEDULE ITEM 700.18) CONFIRM USE WITH McDONALD'S AREA CONSTRUCTION MANAGER
- FL** FLOOR LINE - CHANGE IN MATERIAL - SEE DECOR DRAWINGS
- FP** FIBERGLASS REINFORCED PLASTIC (FRP) - PANOLAM, GRAY SMOOTH, CLASS C, .075. REFER TO ROOM FINISH SCHEDULE SHEET A6.1 FOR INSTALLATION LOCATIONS. FOR ORDERING, CONTACT KIMBERLY LAWSON Kimberly_Lawson@panolam.com 1-866-925-4377
- LL** LEVEL LANDING @ EXT. DOOR W/ MAX. 2% RUNNING/CROSS SLOPE AWAY FROM BUILDING
- MS** MOP SINK - SEE DETAIL 8/A6.1 AND PLUMBING DRAWINGS.
- RL** ROOF ACCESS LADDER W/HATCH ABOVE SEE STRUCTURAL FRAMING PLAN FOR LOCATING DIMENSIONS
- WX** EXTERIOR WINDOW ASSEMBLY - SEE A2.0, A2.1 & 4/A5.0 FOR ADDITIONAL NOTES

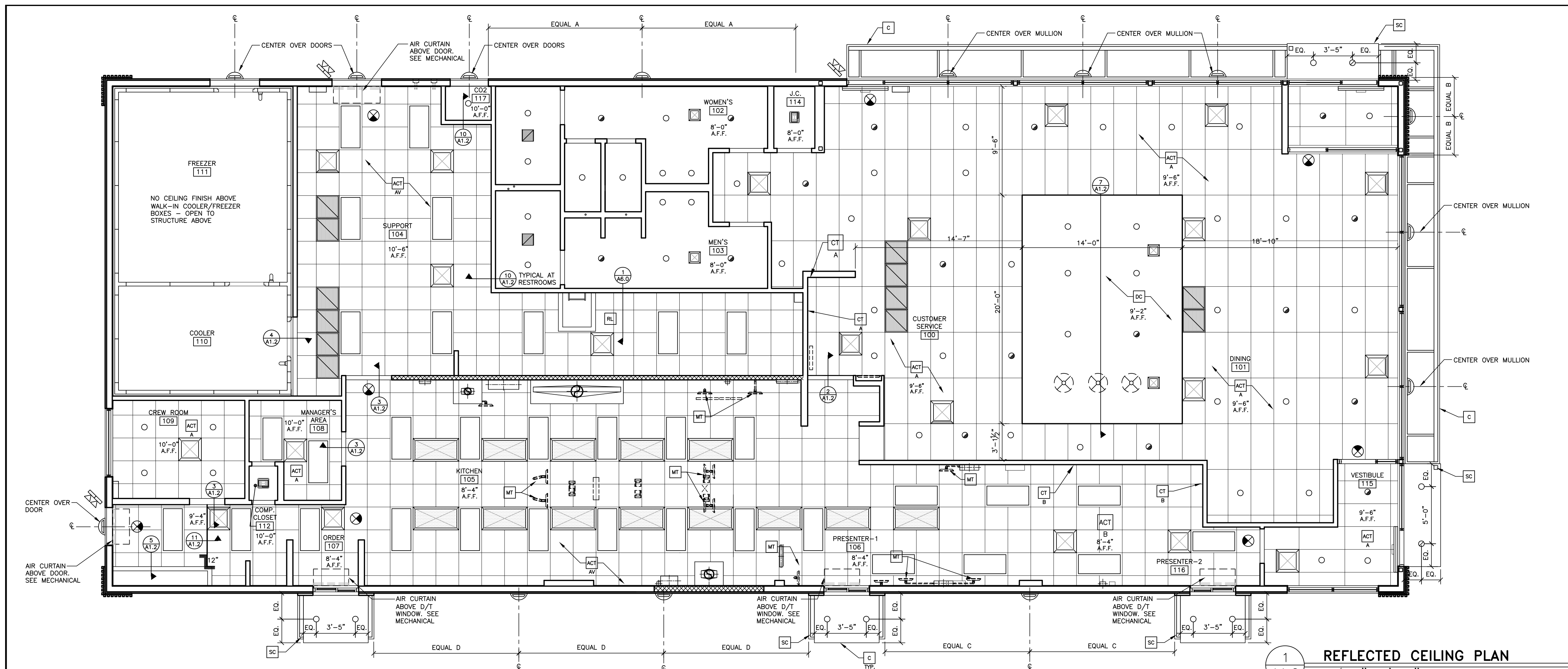
SYMBOL LEGEND

- (A)** PARTITION TYPE TAG SEE 2/A1.0
- (7)** DOOR TAG - SEE DOOR SCHEDULE ON A6.0
- (X)** KEY NOTE
- EXTENT OF WALL TILE - SEE A3.0, A4.2 & A6.1

GENERAL NOTES

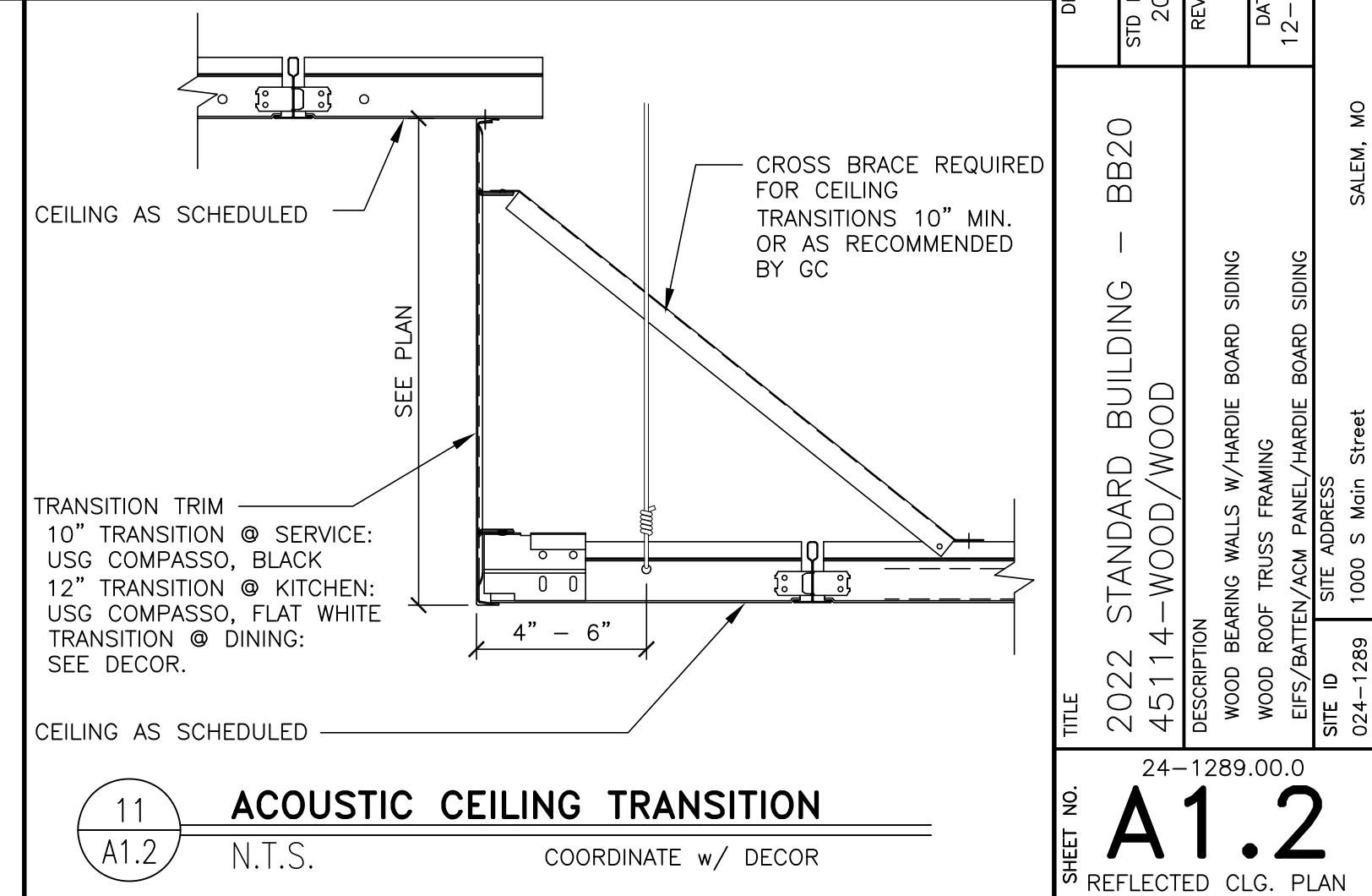
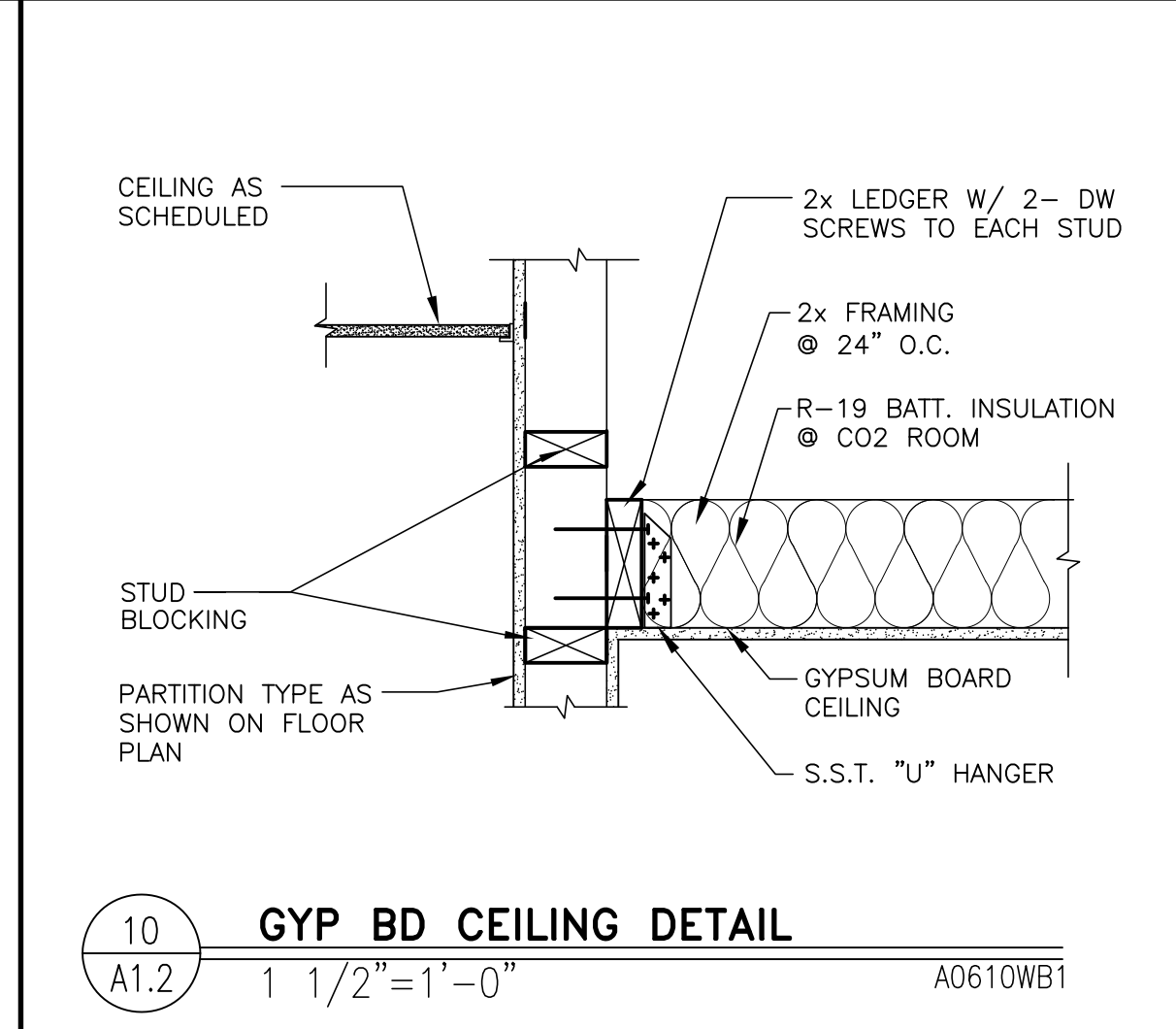
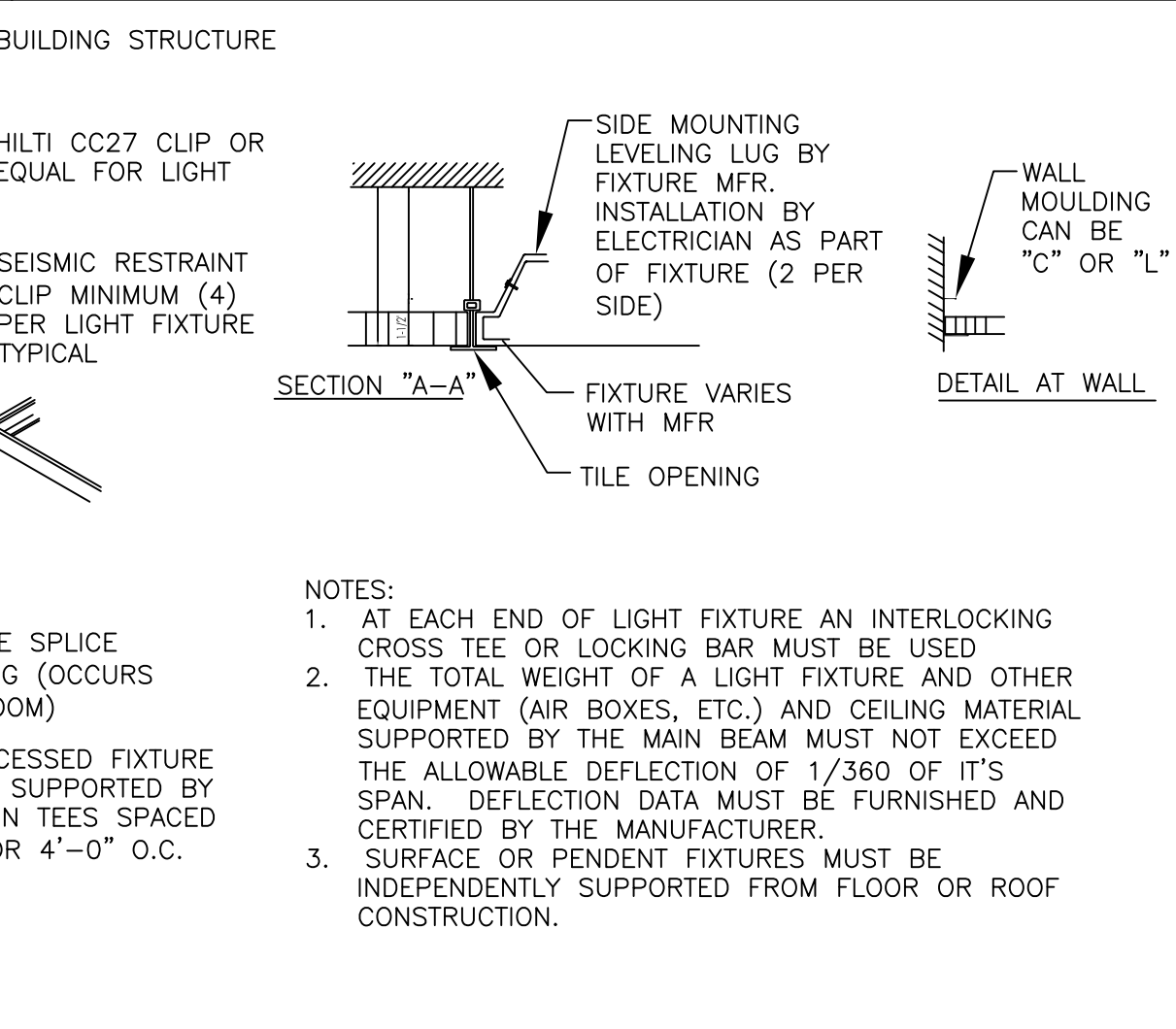
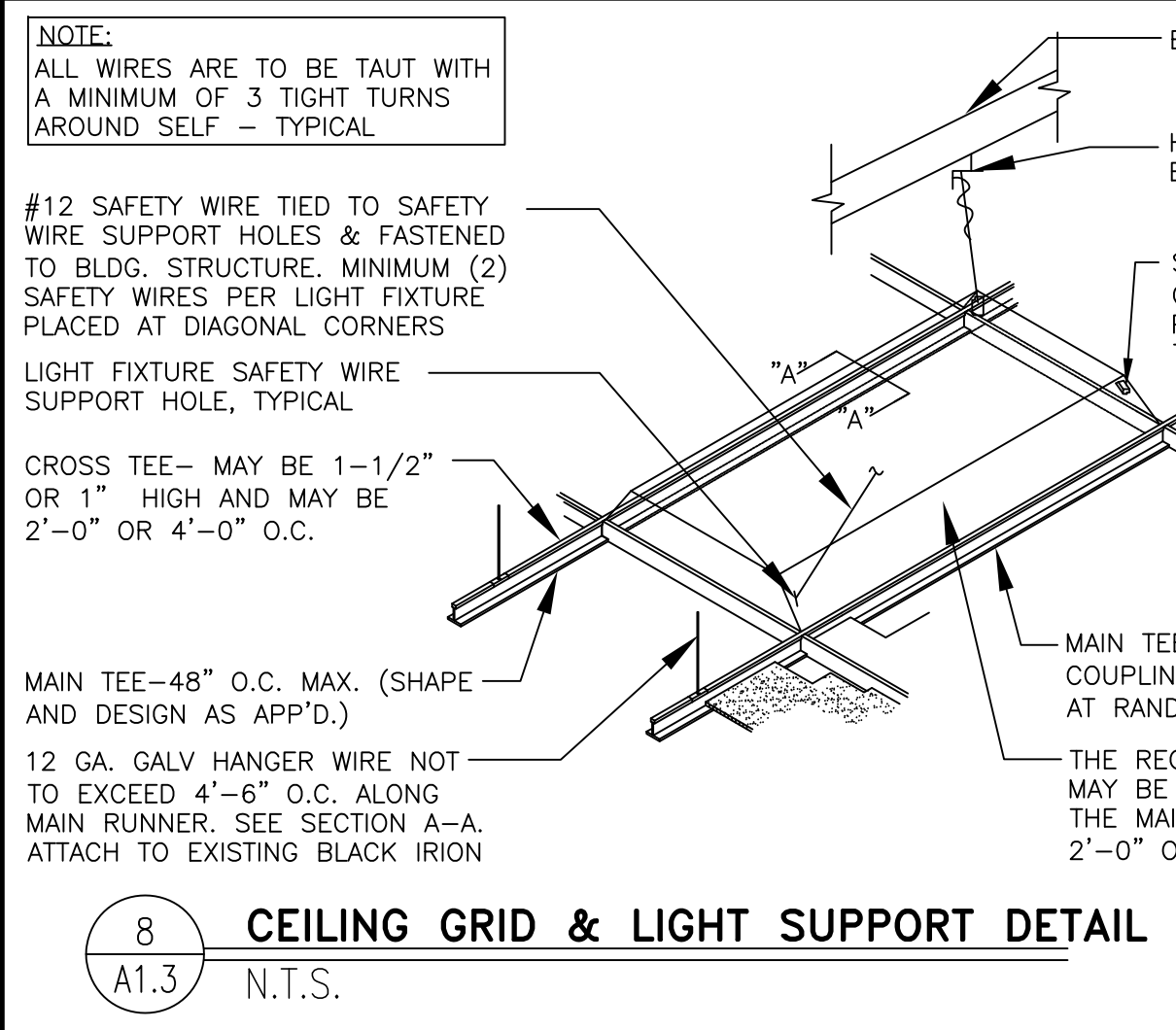
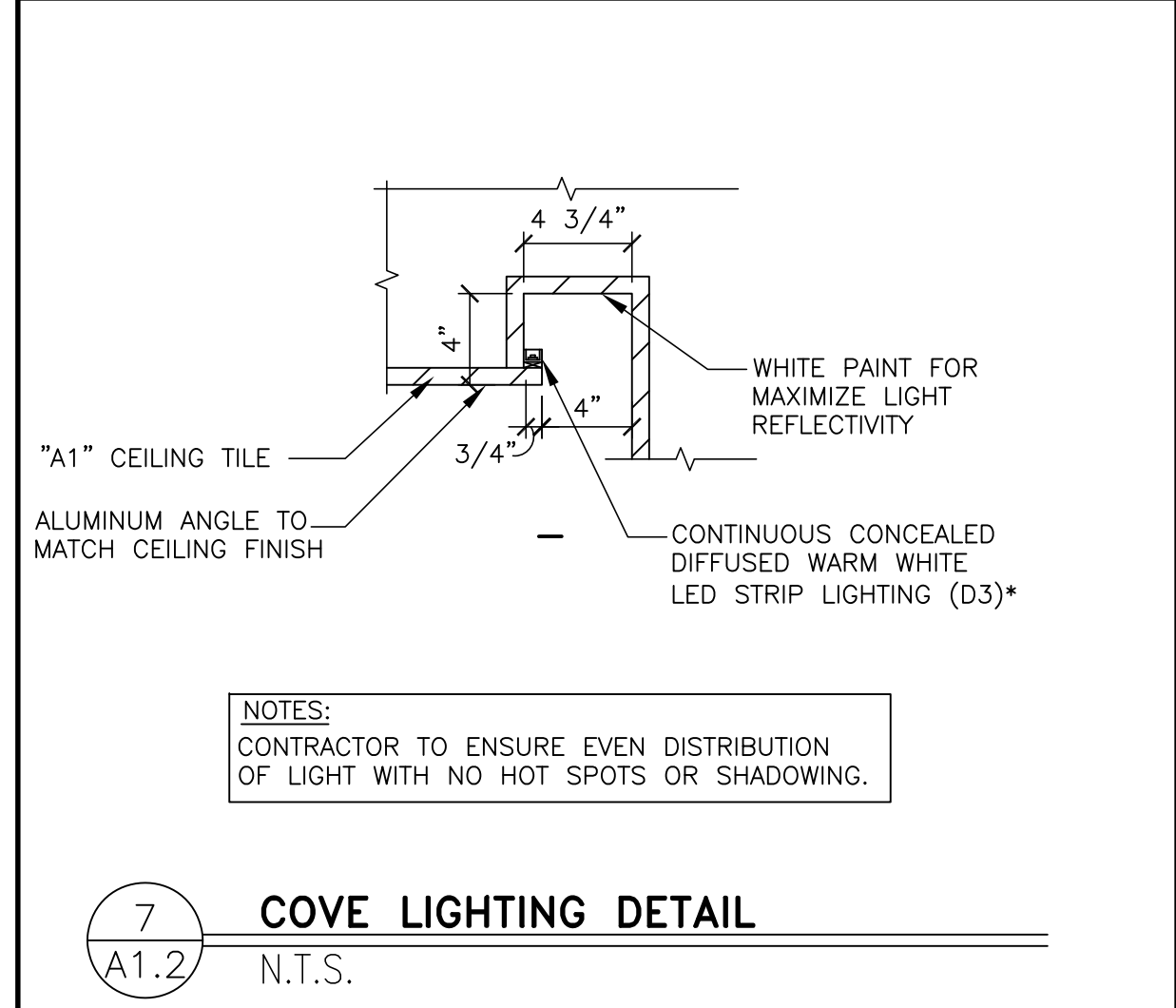
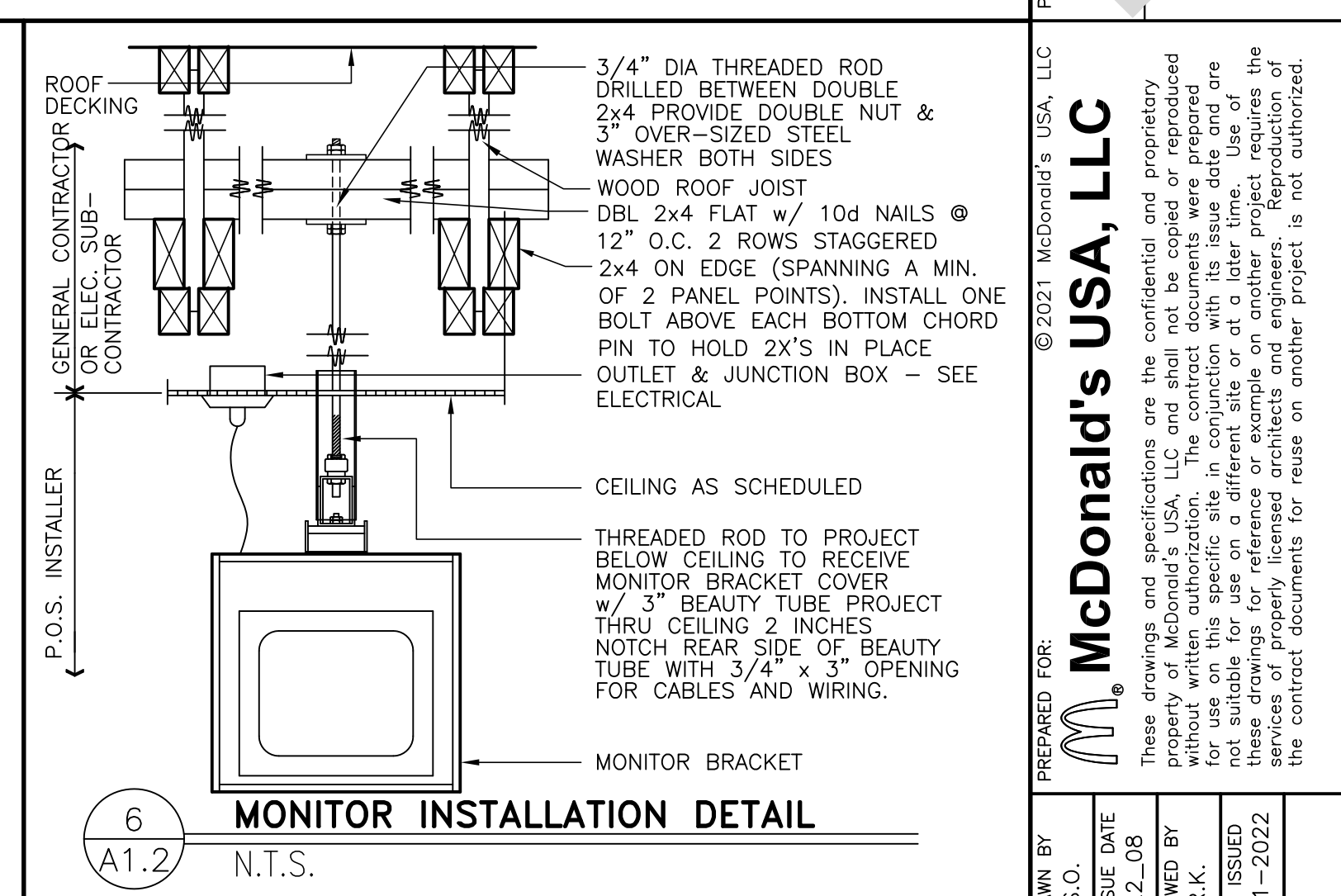
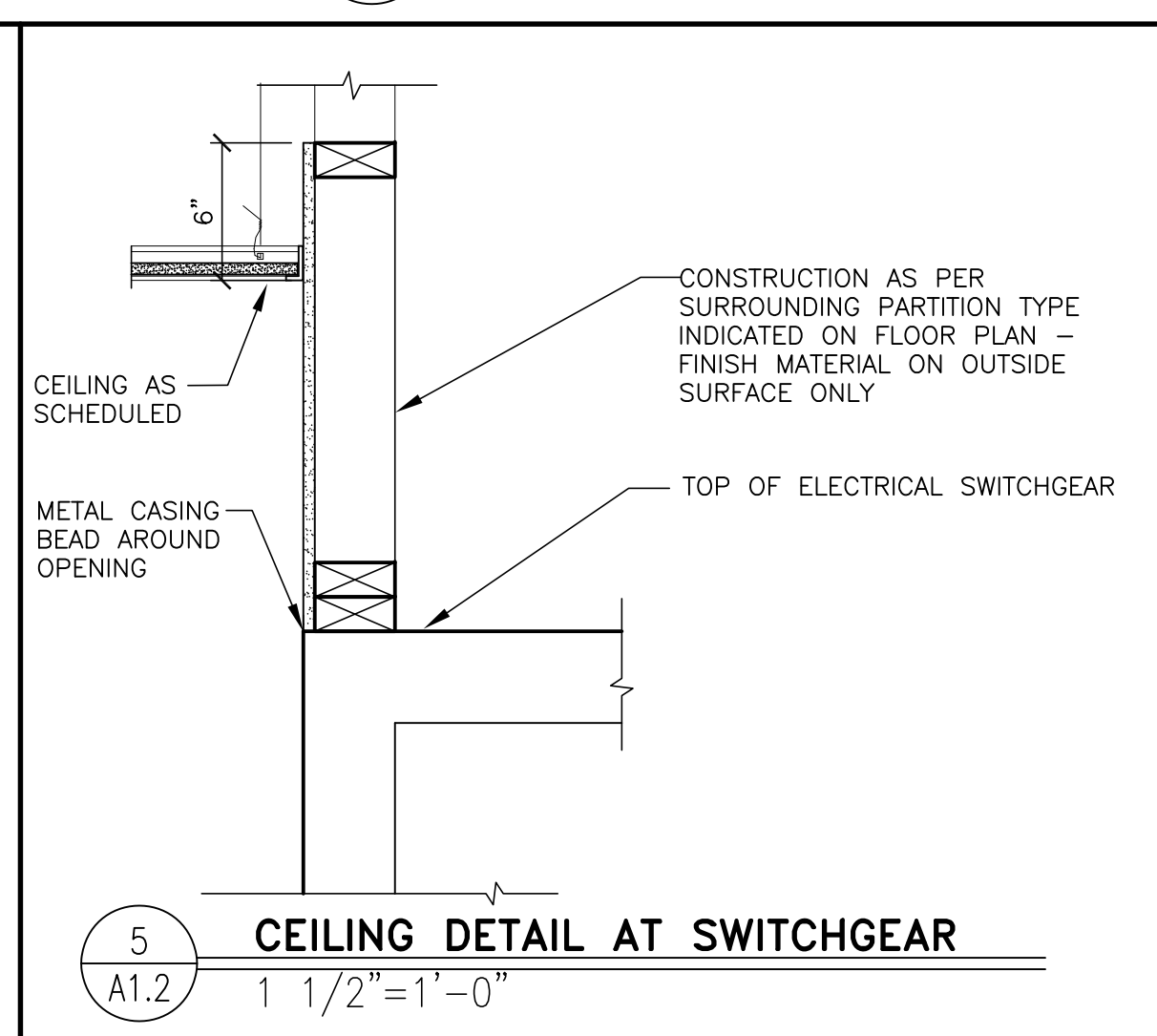
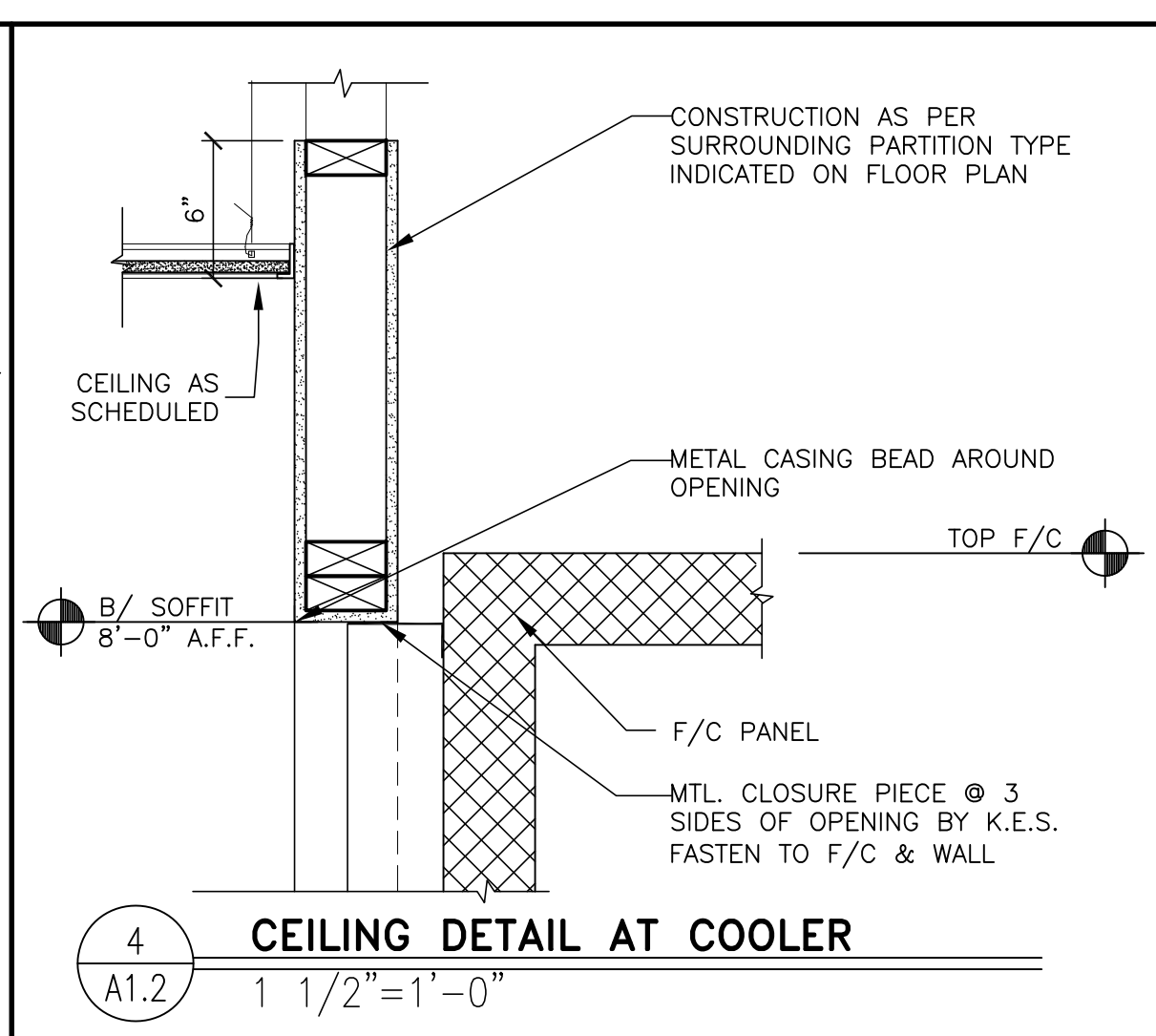
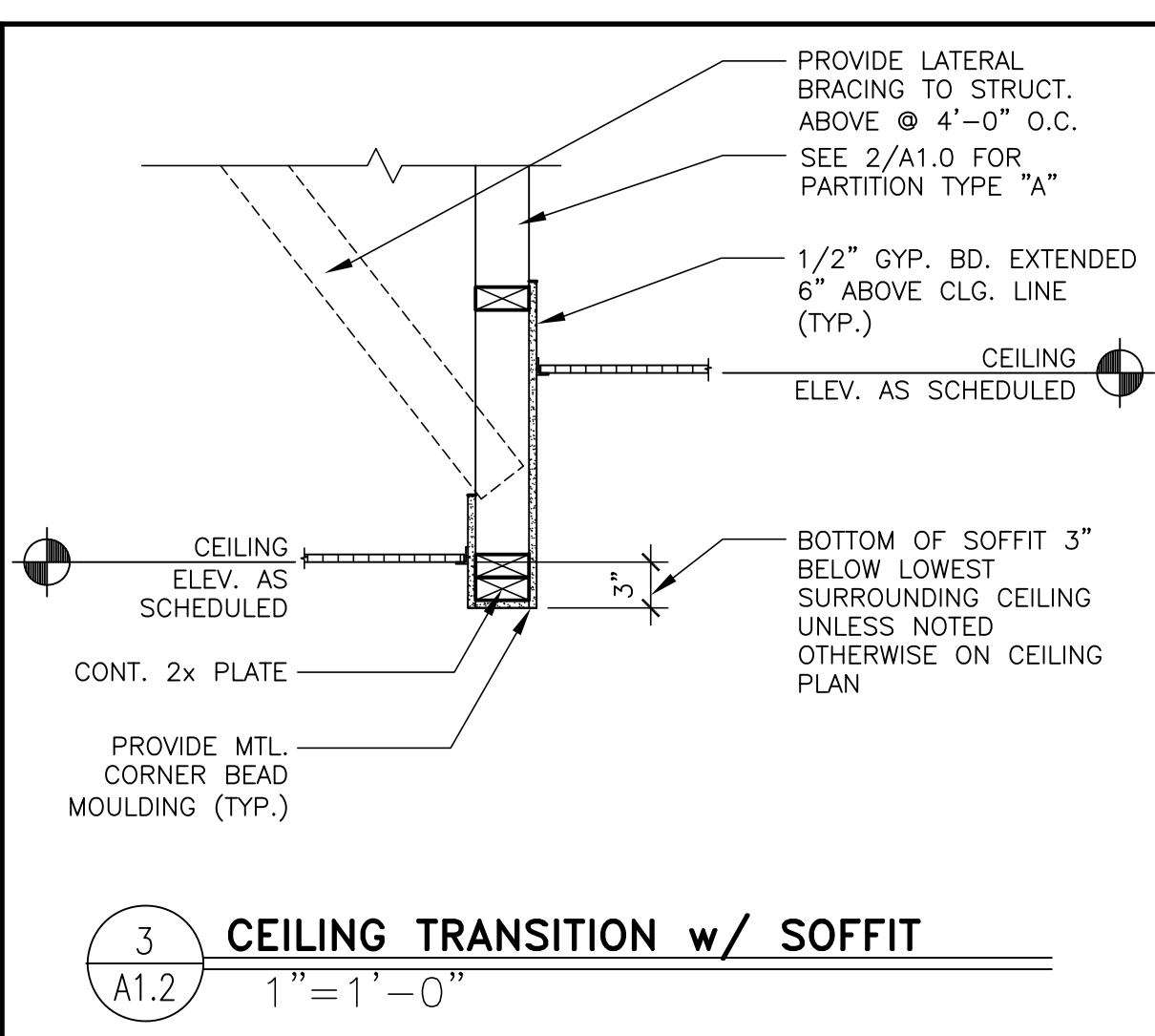
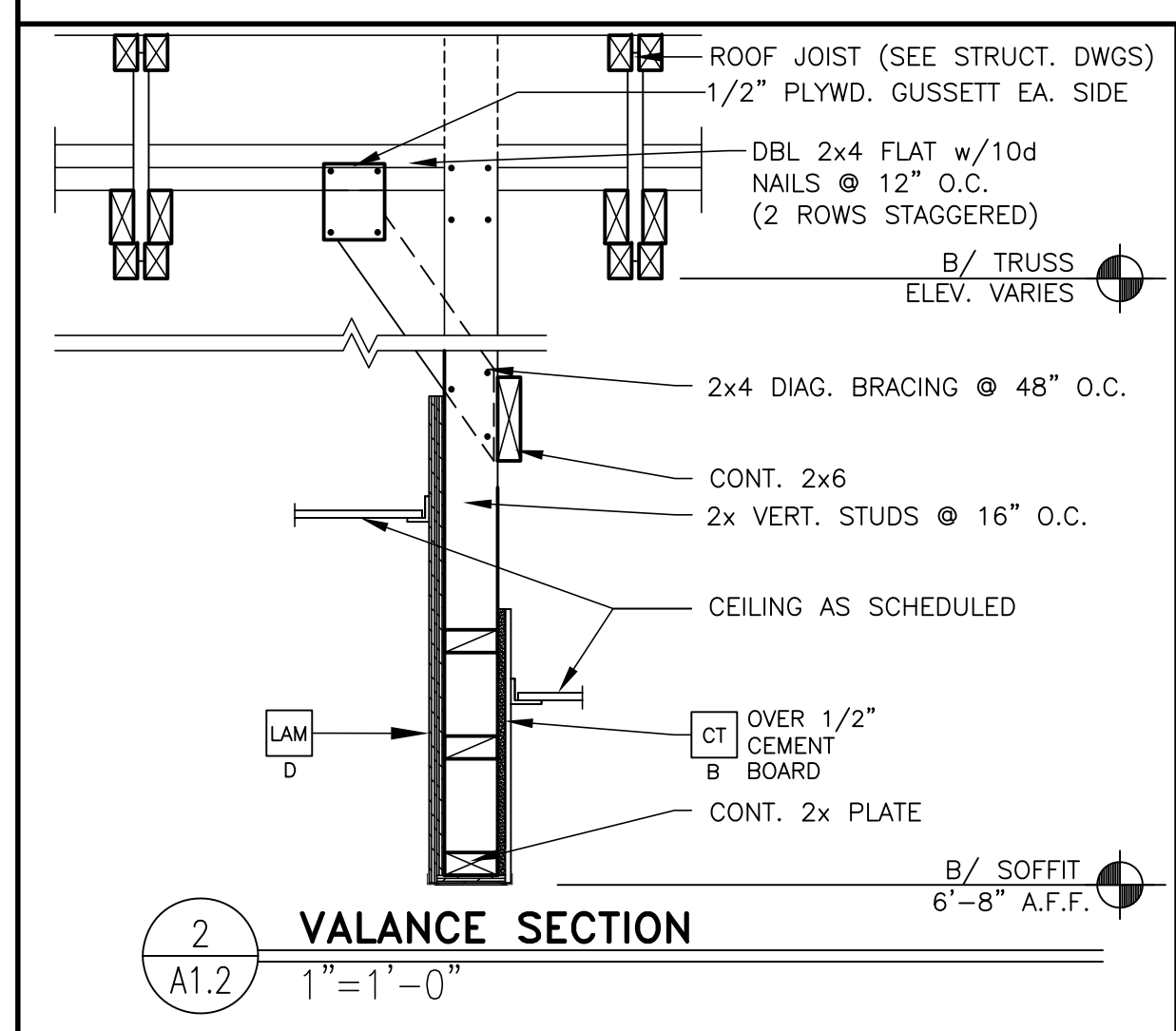
1. EXTERIOR DIMENSIONS ARE TO COLUMN REFERENCE LINES AND EXTERIOR FACE OF FINISH UNLESS OTHERWISE NOTED. INTERIOR DIMENSIONS ARE TO FACE OF INTERIOR WALL BOARD.
2. SEE 4/A5.0 FOR EXTERIOR WALL ASSEMBLY TYPES. SEE 2/A1.0 FOR INTERIOR PARTITION TYPES. INTERIOR PARTITIONS ARE TYPE 'A' UNLESS NOTED OTHERWISE.
3. SEE EXTERIOR ELEVATIONS FOR WINDOW TYPES
4. SEE SHEET A6.0 FOR DOOR SCHEDULE AND SHEET A6.1 FOR ROOM FINISH SCHEDULES
5. SEE SITE PLAN FOR SIDEWALKS, RAMPS, ETC.
6. GC TO PROVIDE ADA SIGNAGE PACKAGE AND INSTALL SIGNS AT LOCATIONS AND POSITIONS INDICATED IN PACKAGE OR AS REQUIRED BY LOCAL CODES. SIGNAGE PACKAGE SUPPLIED BY: FORREST PERMA-SIGN 1-800-214-8765; 9292 1ST ST., BOX 588, NEW ROCHELLE, NY 10802; www.forrestpermasigns.com
7. MAXIMUM OCCUPANCY SIGN TO BE POSTED PER LOCAL CODE. SIGN FURNISHED AND INSTALLED BY GENERAL CONTRACTOR.
8. ALL HANDSINK LOCATIONS SHALL HAVE CEMENT BOARD BACKING 48" IN HEIGHT A.F.F.
9. GC TO COORDINATE ALL REQUIRED BLOCKING FOR WALL HUNG EQUIPMENT, SHELVES, ETC. FOR PROPER INSTALLATION HEIGHTS.
10. KNOX BOX TO BE INSTALLED BY GENERAL CONTRACTOR PER LOCAL CODE AS REQUIRED. MODEL AND LOCATION TO BE COORDINATED WITH FIRE MARSHALL.
11. DASHED LINES @ DOORS, RESTROOMS, & FIXTURES REPRESENT CLEAR FLOOR MANUEVERING CLEARANCES AS REQUIRED BY THE ACCESSIBILITY CODE. CLEARANCES MUST BE MAINTAINED WITHOUT EXCEPTION. IF CONDITIONS PREVENT ANY CLEAR FLOOR SPACE FROM BEING MAINTAINED, CONTACT THE ARCHITECT FOR RESOLUTION.

		PREPARED BY: Robert Kempkes ARCHITECT 1919 Main Street Salem, MO 65766 (417) 836-1111
© 2021 McDonald's USA, LLC McDonald's USA, LLC These drawings and specifications are the confidential and proprietary property of McDonald's USA, LLC and shall not be copied or reproduced without written authorization. The contract documents were prepared not suitable for use on a different site or at a later time. Use of these drawings for reference or example on another project requires the consent of the architect. The contractor shall be responsible for obtaining the contract documents for reuse on another project is not authorized.		
DRAWN BY: S.O. STD ISSUE DATE: 2022_08 REVIEWED BY: R.K. DATE ISSUED: 12-21-2022	TITLE: 2022 STANDARD BUILDING - BB20 45114-WOOD/WOOD DESCRIPTION: WOOD BEARING WALLS W/HARDBOARD SIDING WOOD ROOF TRUSS FRAMING EIFS/BATTEN/ACM PANEL/HARDBOARD SIDING SITE ID: 024-1289	SALEM, MO 1000 S Main Street
SHEET NO: A1.1 PARTIAL FLOOR PLAN	24-1289.00.0	08-25-23 ESE UPDATE DATE DESCRIPTION



KEY NOTES	DESCRIPTION
ACT A	ACOUSTICAL CEILING TILE - 24"x48". VERIFY FINISHES WITH DECOR COMPANY
ACT AV	ACOUSTICAL CEILING TILE: VINYL FACED USG 24"x24" CLEAN ROOM CLIMA-PLUS, UNPERFORATED, SMOOTH TEXTURE COLOR: WHITE GRID: USG 15/16" DX/DXL COLOR: WHITE
ACT B	ACOUSTICAL CEILING TILE: USG 24"x48" PREMIER HI-LITE CLIMAPLUS KAPOK PANELS. COLOR: FLAT BLACK 205 GRID: USG 15/16" DX/DXL COLOR: BLACK
C	ALUMINUM CANOPY WITH INTEGRAL GUTTER AND SCUPPER - SEE 4/AS.0 FOR NOTES - SEE ROOF PLAN FOR DIMENSIONS - SEE ELEVATION FOR COLOR AND FASCIA LOCATIONS
CT A	WALL TILE: CERAMIC TILE SIZE: 4"x12", PATTERN: STACK BOND GROUT: MAPEI ULTRACOLOR PLUS - JOINT TO BE 1/16" MAX. SEE DECOR DRAWINGS FOR TILE AND GROUT COLOR SPEC.
DC	SUSPENDED DECORATIVE CEILING TREATMENT - SEE DECOR DRAWINGS FOR ADDITIONAL INFORMATION
DS	DROPPED SOFFIT
DC-WH	BOTTOM TO ALIGN WITH GYP BD AT EXTERIOR WINDOW HEAD MAY BE REPLACED BY ELEMENT BY DECOR SUPPLIER - CONFIRM WITH AREA CONSTRUCTION MANAGER
MB	MENU BOARD WITH BEZELS BY OTHERS UNDER SEPARATE PERMIT - SEE ELEC PLANS
MT	CEILING MOUNTED MONITOR: A) VERIFY MONITOR LOCATIONS WITH McDONALD'S PROJECT MANAGER PRIOR TO INSTALLATION. B) SEE DETAIL 6/A1.2 FOR INSTALLATION METHOD
RL	ROOF LADDER OPENING
SC	INTERGRAL GUTTER SCUPPER

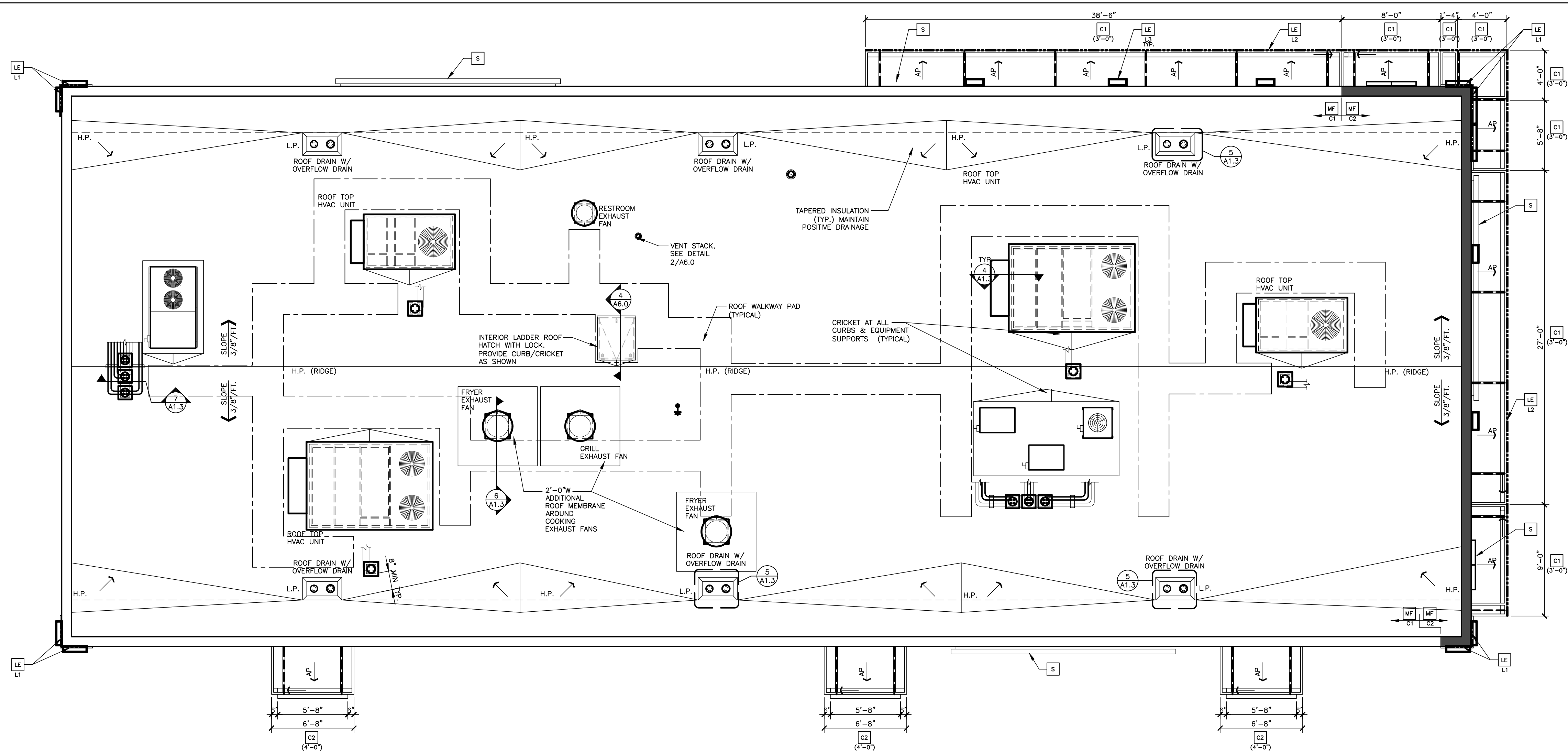
GENERAL NOTES
1. SEE SHT A6.1 FOR CEILING FINISHES.
2. SEE SHT A1.0 FOR MENU BOARD DROPPED SOFFIT LOCATION DIMENSIONS
3. GENERAL CONTRACTOR SHALL COORDINATE HVAC DIFFUSER LOCATION WITH DECOR & MECHANICAL PLANS AND REPORT ANY DISCREPANCIES TO ARCHITECT.
4. REFERENCE MECHANICAL AND ELECTRICAL DRAWINGS FOR DIFFUSER AND LIGHTING INFORMATION.
5. PROVIDE USG V15 CEILING TILE RETENTION CLIPS IN ALL VESTIBULE AREAS



STATE OF MISSOURI
 ARCHITECTS
 D. ROBERT KEMPLES
 ARCHITECT
 1919 W. MAIN STREET
 SALEM, MO 64607
 PREPARED BY: Robert Kemples
 A R C H I T E C T
 3100 W. WASHINGTON
 SALEM, MO 64607
 FAX 816.224.1616 PHONE 816.224.6769

NO.	DATE	DESCRIPTION
1	08-25-23	ESE UPDATE
2		
3		
4		
5		
6		
7		
8		
9		
10		
11		

2022 STANDARD BUILDING - BB20
 45114 - WOOD/WOOD
 DESCRIPTION: WOOD BEARING WALLS W/HARDBOARD SIDING
 WOOD ROOF TRUSS FRAMING
 EFS/BATTEN/ACM PANEL/HARDBOARD SIDING
 SITE ADDRESS: 1000 S Main Street
 SALEM, MO
 24-1289.00.0
A1.2
 REFLECTED CLG. PLAN



- ### LEGEND
- L.P. LOW POINT
 - H.P. HIGH POINT
 - ← DIRECTION OF DRAINAGE
 - ← AP TRELLIS SYSTEM WITH ALUMINUM INFILL PANELS. SLOPE TO EDGE @1/4"PER FT.

- ### KEY NOTES
- C1 ALUMINUM CANOPY SYSTEM W/ FASCIA (COLOR: SEE ELEVATIONS)
 - C2 ALUMINUM CANOPY SYSTEM (COLOR: SEE ELEVATIONS)
 - LE ACCENT LIGHTING - SEE ELEVATIONS & ELECTRICAL
 - L1 - LED LIGHT:
 - L1 = SLIM LED (DOWN ONLY)
 - L2 = INTEGRAL CANOPY FIXTURE
 - L3 = UP ONLY FLOOD FIXTURE
 - MF METAL FASCIA
 - C1-COLOR:
 - C1 = SEE ELEVATIONS FOR COLOR
 - C2 = SEE ELEVATIONS FOR COLOR
 - S McDONALD'S SIGNAGE BY OTHERS UNDER SEPARATE PERMIT (SEE ELEVATIONS)

- ### ROOFING NOTES
1. SINGLE-PLY ROOFING SYSTEM WITH BASE FLASHING SHEET EXTENDING UP PARAPET AND TERMINATED UNDER COPING HOT WELDED TO SEALING STRIP SECURED TO WOOD BLOCKING
 2. INSTALLATION OF ROOFING SHALL BE IN ACCORDANCE WITH MANUFACTURER'S SPECIFICATIONS AND PER DETAIL 2 OF THIS SHEET.
 3. PROVIDE PREFABRICATED METAL CURBS. COORDINATE SIZE, LOCATION AND INSTALLATION REQUIREMENTS W/ M, E, P & S SHEETS. PROVIDE SHIMS TO LEVEL CURB AREAS WHERE ROOF DECK IS PITCHED.
 4. FOR EXACT LOCATION OF EXHAUST FANS, HVAC UNITS, AND ROOF HATCH. REFER TO STRUCTURAL DRAWINGS.
 5. CRICKETS MUST BE INSTALLED AT ALL ROOF CURBS & EQUIPMENT PLATFORMS BY GENERAL CONTRACTOR.

1 ROOF PLAN
A1.3 3/16" = 1'-0"

BY	
REV	
DATE	
DESCRIPTION	

PREPARED BY: Robert Kempkes
 A R C H I T E C T
 3102 W. WILSON BLVD. STE. 200
 INDEPENDENCE, MO 64602
 FAX: 816.252.3166 PHONE: 816.252.9679

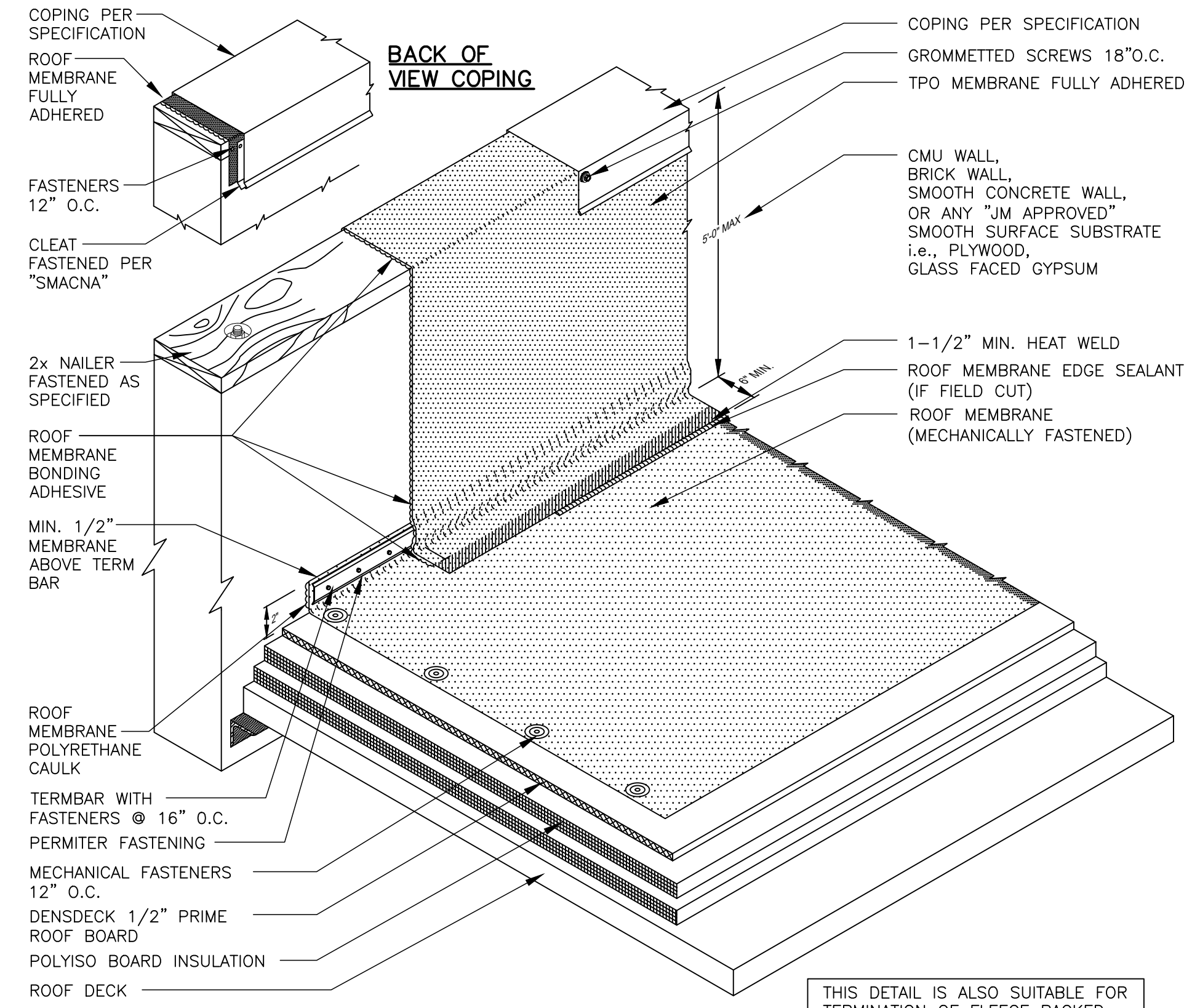
© 2021 McDonald's USA, LLC

McDonald's USA, LLC
 These drawings and specifications are the confidential and proprietary property of McDonald's USA, LLC and shall not be copied or reproduced without written authorization. The contract documents were prepared by McDonald's USA, LLC and shall not be used on any other project. Use of these drawings for reference or example on another project requires the approval of McDonald's USA, LLC. Use of these drawings on another project is not authorized.

DRAWN BY	S.O.
STD ISSUE DATE	2022_08
REVIEWED BY	R.K.
DATE ISSUED	12-21-2022
TITLE	2022 STANDARD BUILDING - BB20
DESCRIPTION	45114 - WOOD/WOOD
DESCRIPTION	WOOD BEARING WALLS W/HARDBOARD SIDING
DESCRIPTION	WOOD ROOF TRUSS FRAMING
DESCRIPTION	EFS/BATTEN/ACM PANEL/HARDBOARD SIDING
SITE ID	024-1289
SITE ADDRESS	1000 S Main Street, SALEM, MO

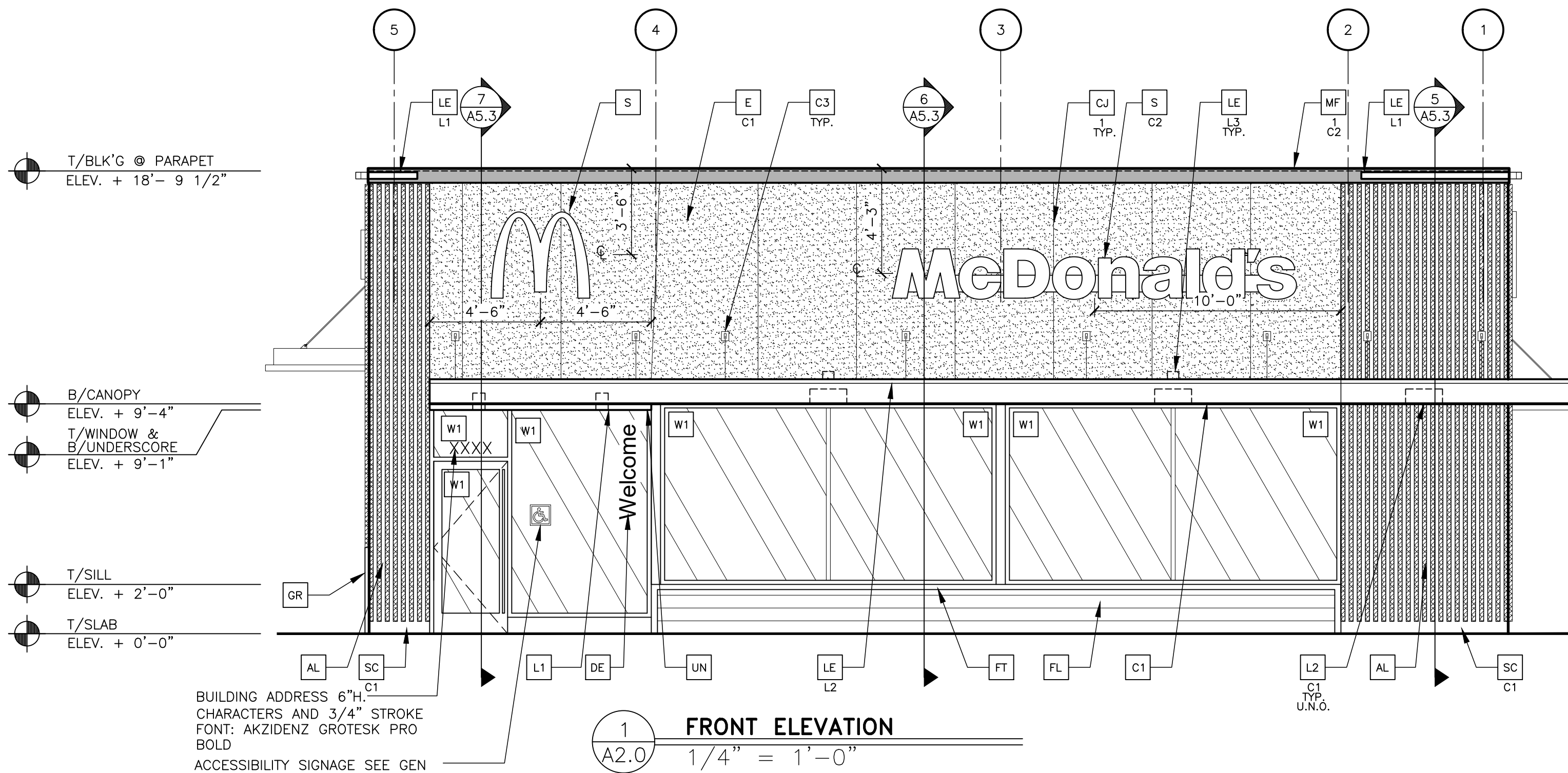
ROOFING SYSTEM

1. MANUFACTURERS AND PRODUCTS:
 - A. DURO-LAST PVC ROOFING SYSTEM
 - B. JM-PVC. REFER TO JOHN'S MANVILLE WEBSITE (www.jm.com) FOR MOST UP-TO-DATE INFORMATION. NO SUBSTITUTIONS ALLOWED
2. SPECIFIED ROOFING SYSTEMS (AS SHOWN):
 - A. HEAT-WELDABLE SINGLE-PLY 50 MIL PVC ROOFING SYSTEM, INSTALLED OVER RIGID INSULATION ON WOOD ROOF DECK HAVING A SLOPE OF 3/8"/FT. MATERIALS SHALL BE AS FOLLOWS:
 - A. SINGLE-PLY ROOFING SYSTEM AS MANUFACTURED BY MANUFACTURER LISTED ABOVE TO COMPLY WITH ASTM E 108 OR UL 790, ASTM D-6878, AND FMG I-90 FOR WIND UPLIFT.
 - B. FASTENERS: METAL FASTENERS AND PLATES AS PER MANUFACTURER.
 - C. ACCESSORIES: PRE-FABRICATED CURBS, FLASHING, CORNERS, TERMINATION BARS, PIPE FLASHING, VENT FLASHING ETC. AS PER MANUFACTURER.
 - D. PLEASE SEE SINGLE-PLY FLASHING SPECIFICATIONS FOR A FULL DESCRIPTION OF INSTALLATION INSTRUCTIONS AND REQUIREMENTS WHICH ARE CONSIDERED A PART OF THIS DETAIL.
 - E. ANY CARPENTRY OR METAL WORK SHOULD BE DESIGNED AND CONSTRUCTED IN ACCORDANCE WITH LOCAL CODE REQUIREMENTS AND/OR PROJECT SPECIFICATIONS. THESE COMPONENTS SHOULD BE REVIEWED AND APPROVED BY A LICENSED DESIGN PROFESSIONAL. CONTACT MANUFACTURER FOR METAL OPTIONS TO BE INCLUDED WITHIN THE MANUFACTURER'S GUARANTEE.
 - F. ROOF MEMBRANE EDGE SEALANT IS REQUIRED ON ALL CUT OR NON-ENCAPSULATED EDGES OF REINFORCED MEMBRANE. THIS INCLUDES FACTORY CUT MEMBRANE.
3. WALKWAYS:
 - A. 30" WIDE WALKWAY ROLL, HOT AIR WELDED TO MEMBRANE.
 - B. PROVIDE WALKWAY FROM ROOF LADDER EXIT TO ALL ROOF TOP EQUIPMENT AS PER ROOF PLAN ABOVE.
 - C. INSTALL WALKWAY ACCORDING TO WALKWAY PAD MANUFACTURER'S WRITTEN INSTRUCTION.
4. RIGID INSULATION:
 - A. PROVIDE REQUIRED LAYERS OF POLYISOCYANURATE INSULATION W/ 1/2" "DENSDECK" COVER BOARD TO MEET A MINIMUM CONTINUOUS R-30 VALUE - THICKNESS AS REQUIRED. PROVIDE POSITIVE SLOPE TO ALL ROOF DRAINS. SEE ROOF PLAN. PROVIDE TOP LAYER PROTECTION MATERIAL AS PER MANUFACTURER'S RECOMMENDATIONS. BOTTOM LAYER OF INSULATION TO HAVE INTEGRAL THERMAL BARRIER OR APPROVED ROOFING MANUFACTURER'S THERMAL UNDERLAYMENT SHEET. ASSEMBLY SHALL COMPLY WITH UL 1256 OR FMG 4450 AND ASTM C 1289, TYPE I OR II.
 - B. TAPERED INSULATION: PROVIDE TAPERED INSULATION AS REQUIRED FOR POSITIVE DRAINAGE TO ROOF DRAINS AS INDICATED PER ROOF PLAN ABOVE. ¼" PER FOOT MIN. REQUIRED.
5. EXHAUST FANS:
 - A. PROVIDE ADDITIONAL LAYER OF ROOF MEMBRANE AROUND EXHAUST FANS AS INDICATED PER ROOF PLAN ABOVE.

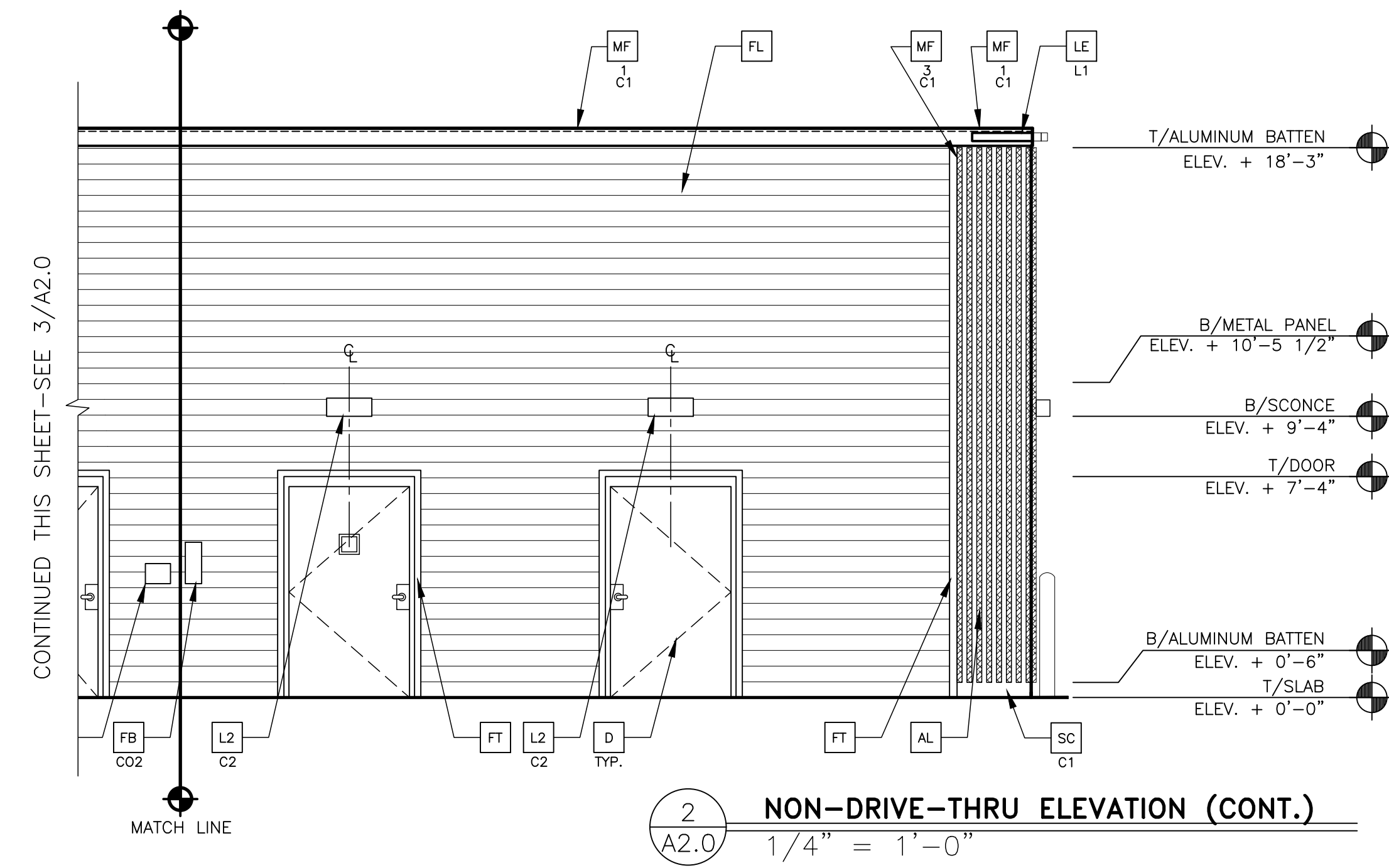
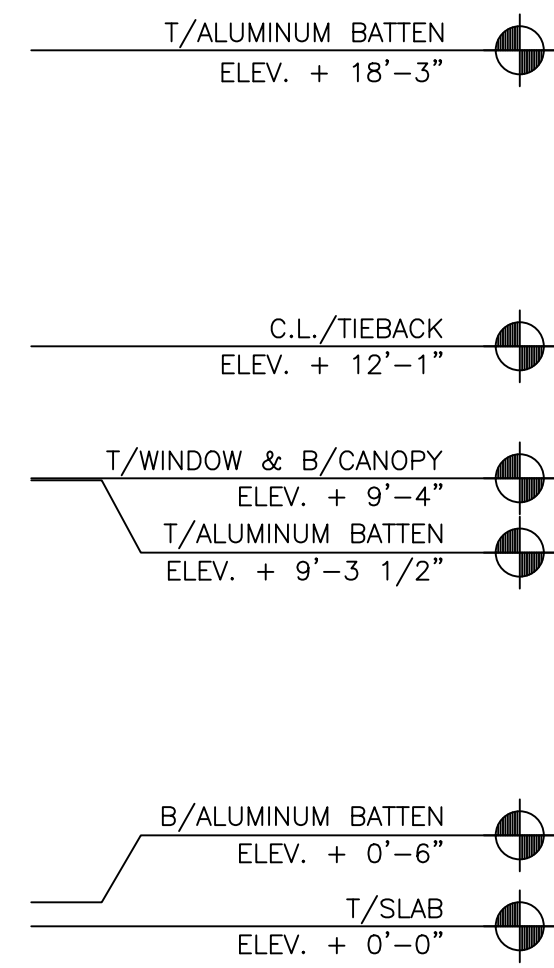


THIS DETAIL IS ALSO SUITABLE FOR TERMINATION OF FLEECE BACKED MEMBRANES. NON FLEECE BACK MEMBRANE IS REQUIRED FOR WALL FLASHINGS.

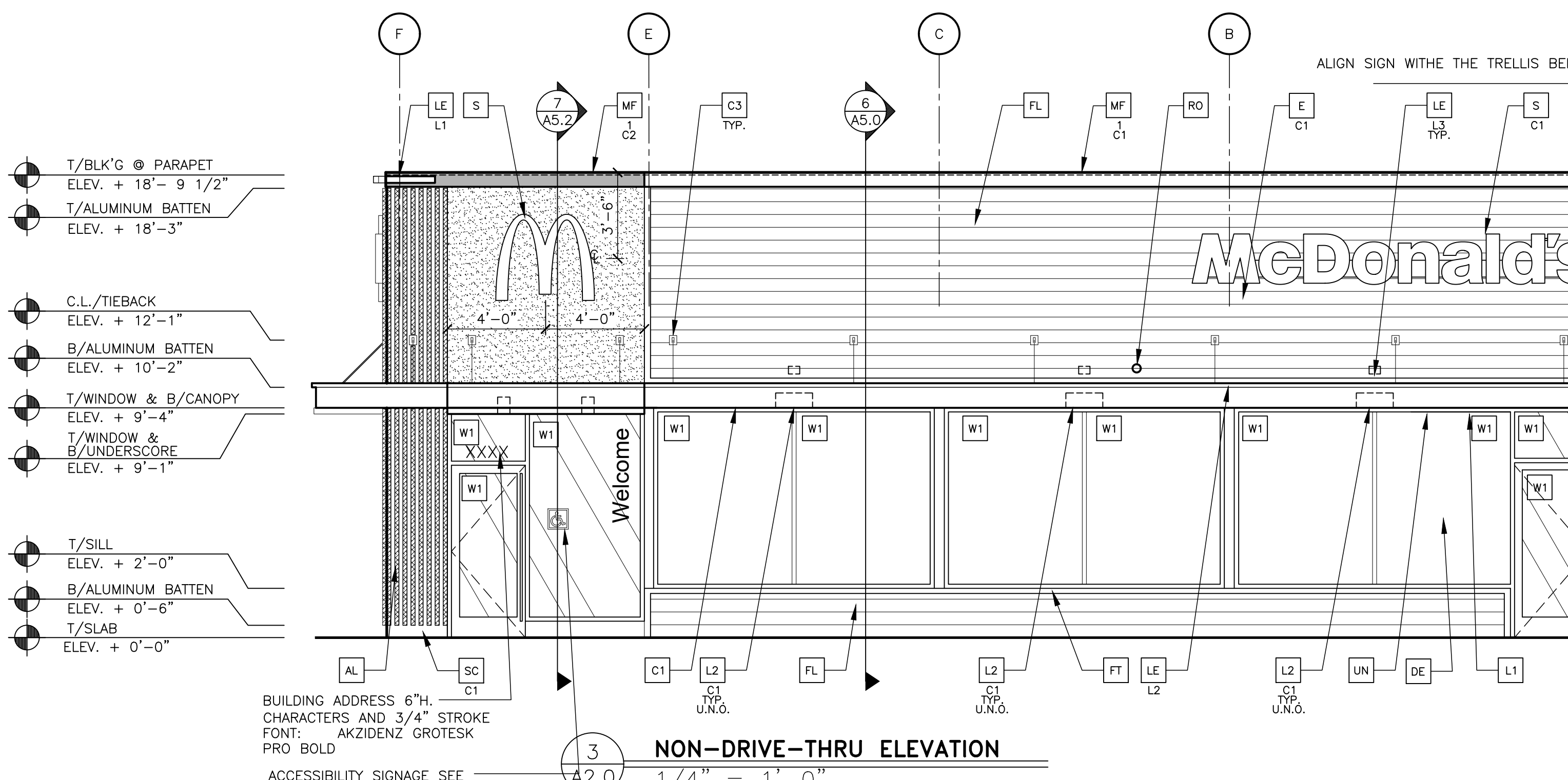
2 ROOFING SYSTEM
A1.3 N.T.S.



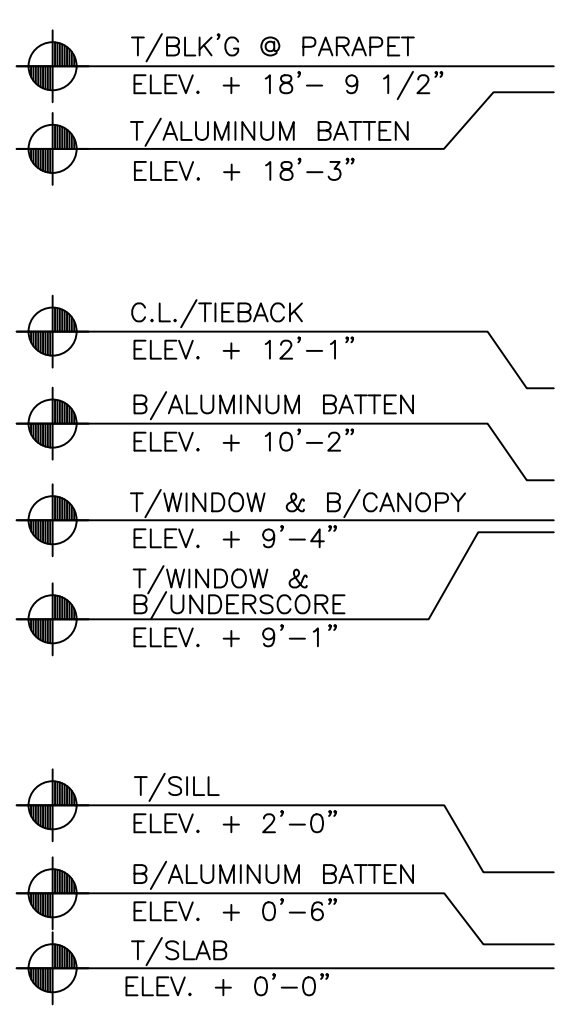
1 FRONT ELEVATION
A2.0 1/4" = 1'-0"



2 NON-DRIVE-THRU ELEVATION (CONT.)
A2.0 1/4" = 1'-0"



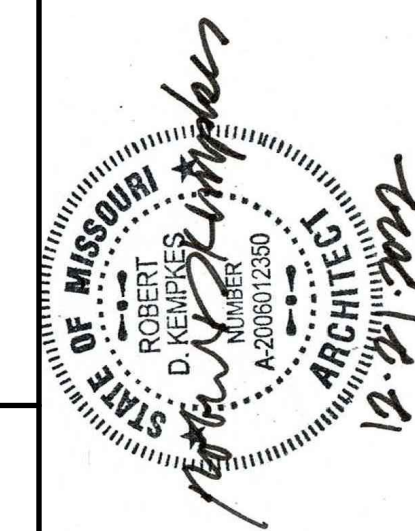
3 NON-DRIVE-THRU ELEVATION
A2.0 1/4" = 1'-0"



KEY NOTES: DESERT COLOR SCHEME

- AL** ALUMINUM BATTEN SYSTEM
SIZE: 2"x2" PROFILE
COLOR: WOOD GRAIN, BACKRAIL UNFINISHED, ENDCAP PAINTED TO MATCH
SUBSTRATE: 1/2" EXTERIOR HIGH DENSITY OVERLAY (HDO) PLYWOOD, BB, GROUP 1, HDO BOTH FACES, APA TRADEMARKED. COURSE GRIT SAND SURFACES PRIOR TO PRIMING. PRIME AND PAINT BOTH SIDES AND ALL EDGES PRIOR TO INSTALLATION.
SUBSTRATE COLOR: "IRON ORE" SW7069 BY SHERWIN WILLIAMS
- AP** ALPOLIC METAL PANEL (COLOR: RAL 7022)
- C1** ALUMINUM CANOPY SYSTEM W/FASCIA
COLOR: WHITE
- C2** ALUMINUM CANOPY SYSTEM
COLOR: RAL 7022
- C3** ALUMINUM CANOPY TIEBACK
GC TO PROVIDE CONTINUOUS BLOCKING ON WALL BEHIND TIEBACKS
- CJ** CONTROL JOINT
T-TYPE:
1 = FIBER CEMENT PANELS
- D** HOLLOW METAL DOOR
PAINT: HC-85 FARVIEW TAUPE BY BENJAMIN MOORE
- DE** DECAL BY GRAPHICS SUPPLIER
SURFACE APPLIED, FIELD INSTALLED, PRE CUT, PRE SPACED.
SUPPLIERS:
VOMELA (865) 330-7337, ann.bowen@vomela.com
GFX INTERNATIONAL (847) 543-4600,
mcdonaldsdecor@gfx.com
- E** EXTERIOR INSULATION FINISH SYSTEM (E.I.F.S.)
C1-COLOR:
C1 = RAL 7022
- FB** FILL BOX
C02-C02 = BULK C02 FILL BOX (EQPM SCHEDULE ITEM 49.00)
BO = BULK OIL FILL BOX (EQPM SCHEDULE ITEM 700.18)
- FL** FIBER CEMENT LAP SIDING: HARDIEPLANK LAP SIDING, SMOOTH, 8 1/4" WIDTH, 7" EXPOSURE, HZS, COLOR: TIMBER BARK
- FT** FIBER CEMENT TRIM: HARDIETRIM BOARDS, 4/4 SMOOTH, 1 5/8" & 3 1/2" WIDTH, 3/4" THICK, HZS, COLOR: TIMBER BARK (CHECK 1 5/8" PRE-PAIN AVAILABILITY)
- GR** GUARD RAIL - SEE SITE PLAN FOR EXACT LOCATION AND LENGTHSEE 4/A2.1 FOR DETAILS
- L1** RECESSED DOWN LIGHT FIXTURE - SEE ELECTRICAL
COLOR: GOLD
- L2** RADIAL SCENCE LIGHT FIXTURE - SEE ELECTRICAL
C1-COLOR:
C1 = WHITE
C2 = PLATINUM SILVER
- LE** ACCENT LIGHTING - SEE ELECTRICAL
L1-LED LIGHT:
L1 = SLIM LED (DOWN ONLY)
L2 = INTEGRAL CANOPY FIXTURE
L3 = UP ONLY FLOOD FIXTURE
- PB** PIPE BOLLARD - PAINTED YELLOW
- PT** (RMHC) COIN COLLECTOR
UNIT: APERTURE WFT #DTA2013
CALL 1-877-766-7642 TO ORDER
- MF** METAL FASCIA
C1-TYPE:
1 = PRE-FAB ANCHOR-TITE FASCIA
2 = BOTTOM TRIM AT METAL REVEAL PANEL
3 = VERTICAL TRIM AT METAL REVEAL PANEL
CORNERS, CLOSURES
COLOR:
C1 = WEATHERED ZINC
C2 = RAL 7022
ROOF DRAIN OVERFLOW PIPE PAINT TO MATCH SURROUNDING MATERIAL
- RO** ROOF DRAIN OVERFLOW PIPE PAINT TO MATCH SURROUNDING MATERIAL
- S** McDONALD'S SIGNAGE BY OTHERS - UNDER SEPARATE PERMIT.
C1-COLOR:
C1 = WEATHERED ZINC RACEWAY
C2 = RAL 7022 RACEWAY
- ST** C02 STROBE/ALARM. SEE MECHANICAL DRAWINGS FOR SPECIFICATION.
- SC** STUCCO
C1-COLOR:
C1 = "IRON ORE" 7069 BY SHERWIN WILLIAMS
- UN** METAL UNDERSCORE
COLOR: GOLD
- W1** EXTERIOR WINDOW ASSEMBLY - TEMPERED GLASS
COLOR: DARK BRONZE - SEE ASSEMBLY NOTES ON 4/A5.0 & FRAME TYPES ON SHEET A6.0
DRIVE-THRU WINDOW BY READY ACCESS
MODEL: 600 SERIES, 36" SERVICE HEIGHT WITH TRANSOM, MANUAL OPEN; ELECTRONIC RELEASE
XX-COLOR: DEEP BRONZE
SLIDE DIRECTION: RL = RIGHT TO LEFT
LR = LEFT TO RIGHT

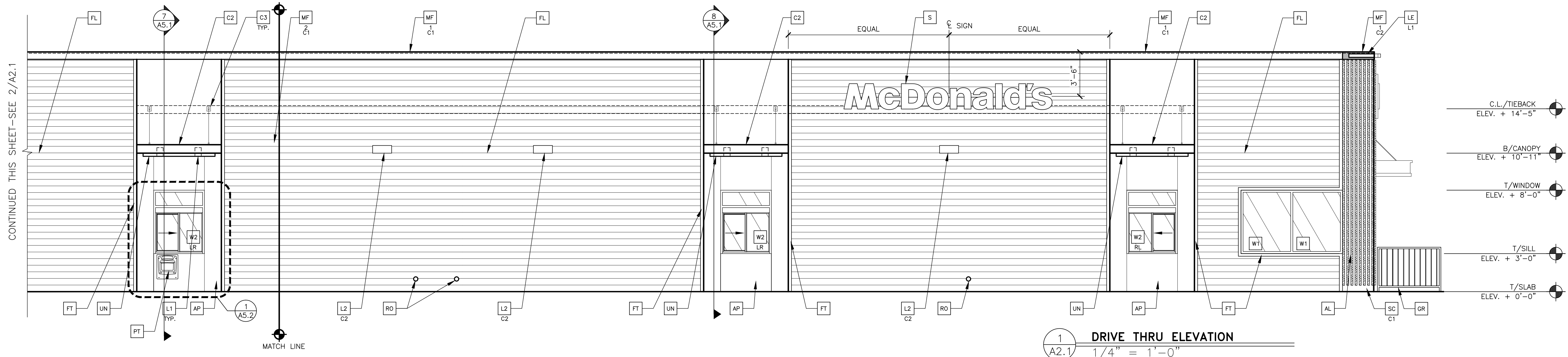
NO.	REV.	DATE	DESCRIPTION



Prepared By: Robert Kempkes
ARCHITECT
310 CENTRAL AVENUE, SUITE 200
SALEM, MISSOURI 64484
TEL: 816.261.1111 FAX: 816.261.1111

McDonald's USA, LLC
These drawings and specifications are the confidential and proprietary property of McDonald's USA, LLC and shall not be copied or reproduced without written authorization. The contract documents were prepared in the State of Missouri and shall govern. Use of these drawings for reference or example on another project requires the contractor to obtain the necessary permissions from the architect. The contractor documents for reuse on another project is not authorized.

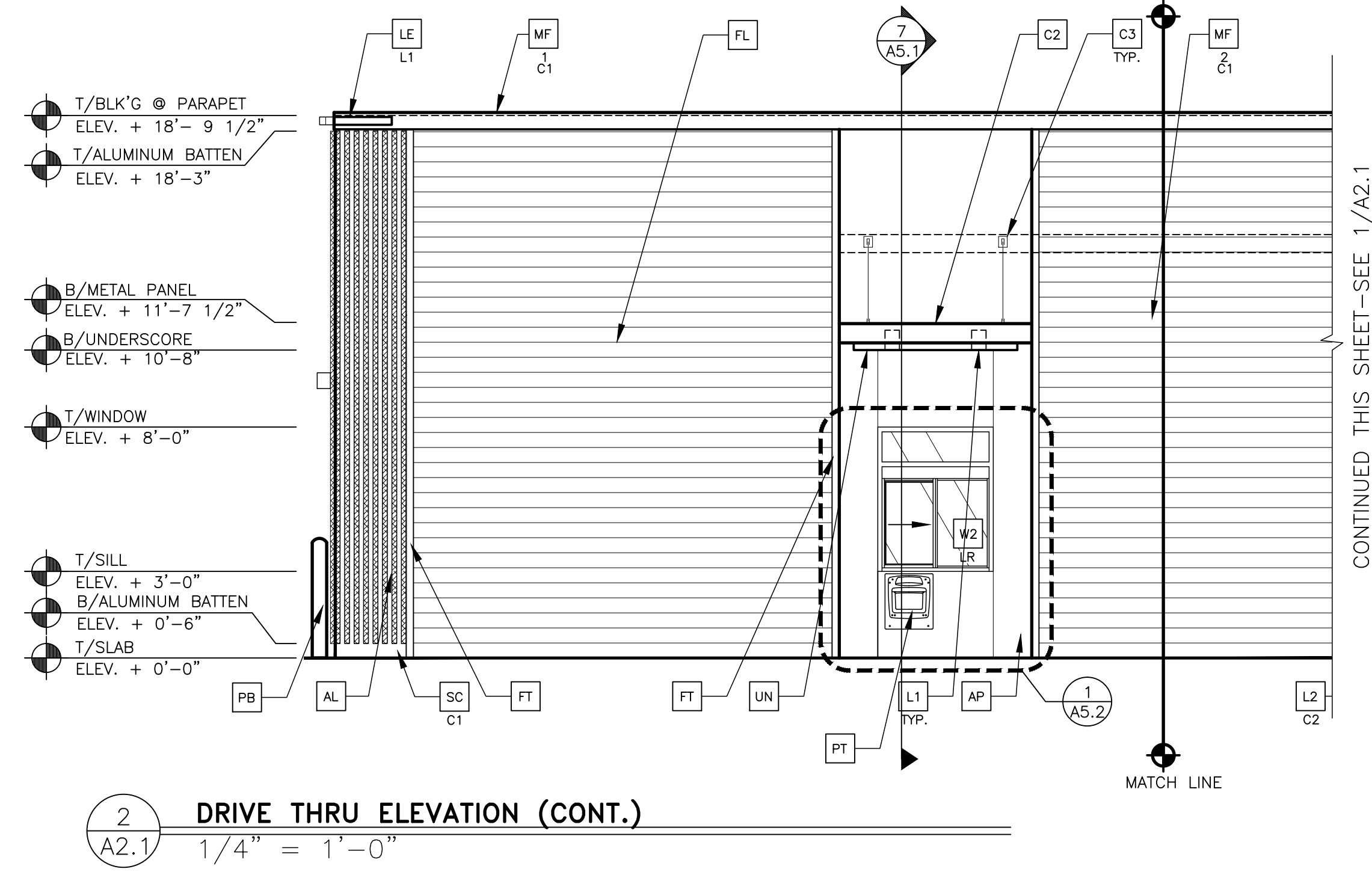
DRAWN BY: S.O.	DATE: 2022_08	REVIEWED BY: R.K.	DATE ISSUED: 12-21-2022
TITLE: 2022 STANDARD BUILDING - BB20	DESCRIPTION: 45114-WOOD/WOOD	WOOD BEARING WALLS W/HARDBOARD SIDING	WOOD ROOF TRUSS FRAMING
SHEET NO: A2.0	ELEVATIONS	24-1289.00.0	UNIT: APERTURE WFT #DTA2013



CONTINUED THIS SHEET-SEE 2/A2.1

1 DRIVE THRU ELEVATION
 1/4" = 1'-0"

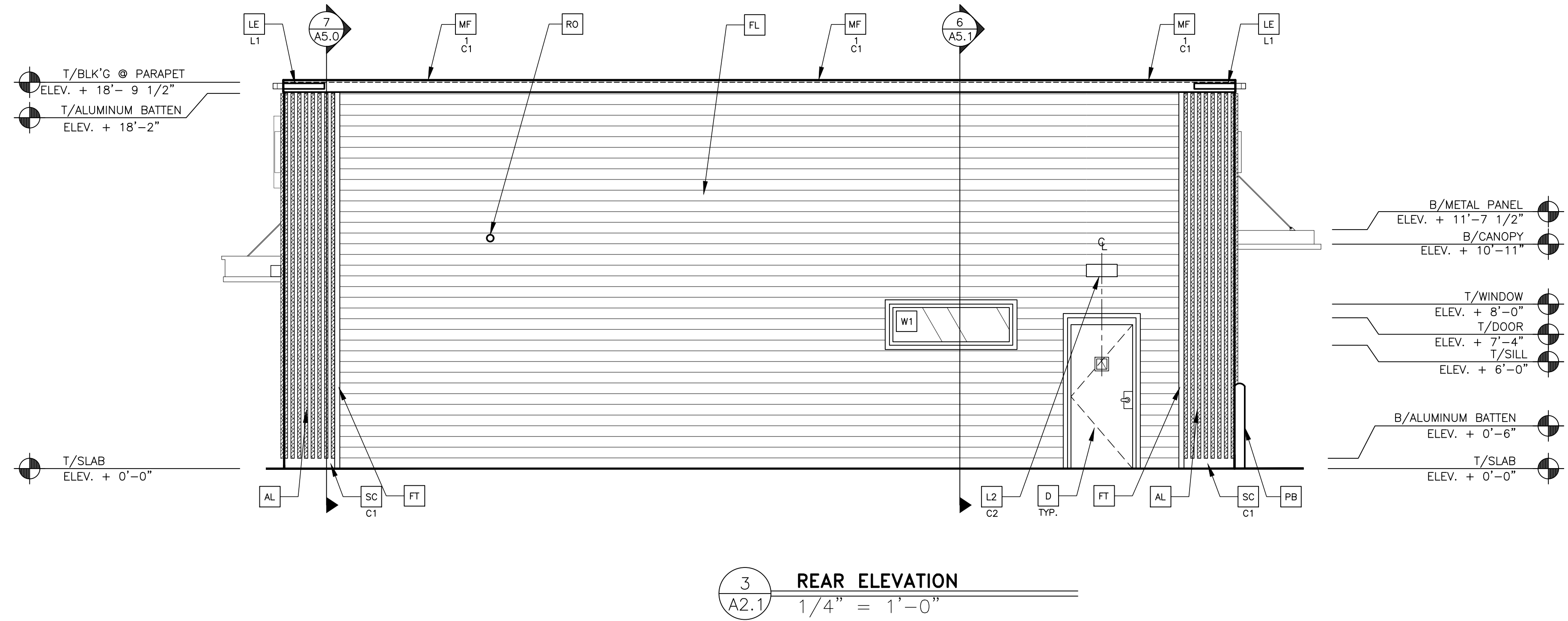
- C.L./TIEBACK
ELEV. + 14'-5"
- B/CANOPY
ELEV. + 10'-11"
- T/WINDOW
ELEV. + 8'-0"
- T/SILL
ELEV. + 3'-0"
- T/SLAB
ELEV. + 0'-0"



CONTINUED THIS SHEET-SEE 1/A2.1

2 DRIVE THRU ELEVATION (CONT.)
 1/4" = 1'-0"

- T/BLK'G @ PARAPET
ELEV. + 18'-9 1/2"
- T/ALUMINUM BATTEN
ELEV. + 18'-3"
- B/METAL PANEL
ELEV. + 11'-7 1/2"
- B/UNDERSORE
ELEV. + 10'-8"
- T/WINDOW
ELEV. + 8'-0"
- T/SILL
ELEV. + 3'-0"
- B/ALUMINUM BATTEN
ELEV. + 0'-6"
- T/SLAB
ELEV. + 0'-0"



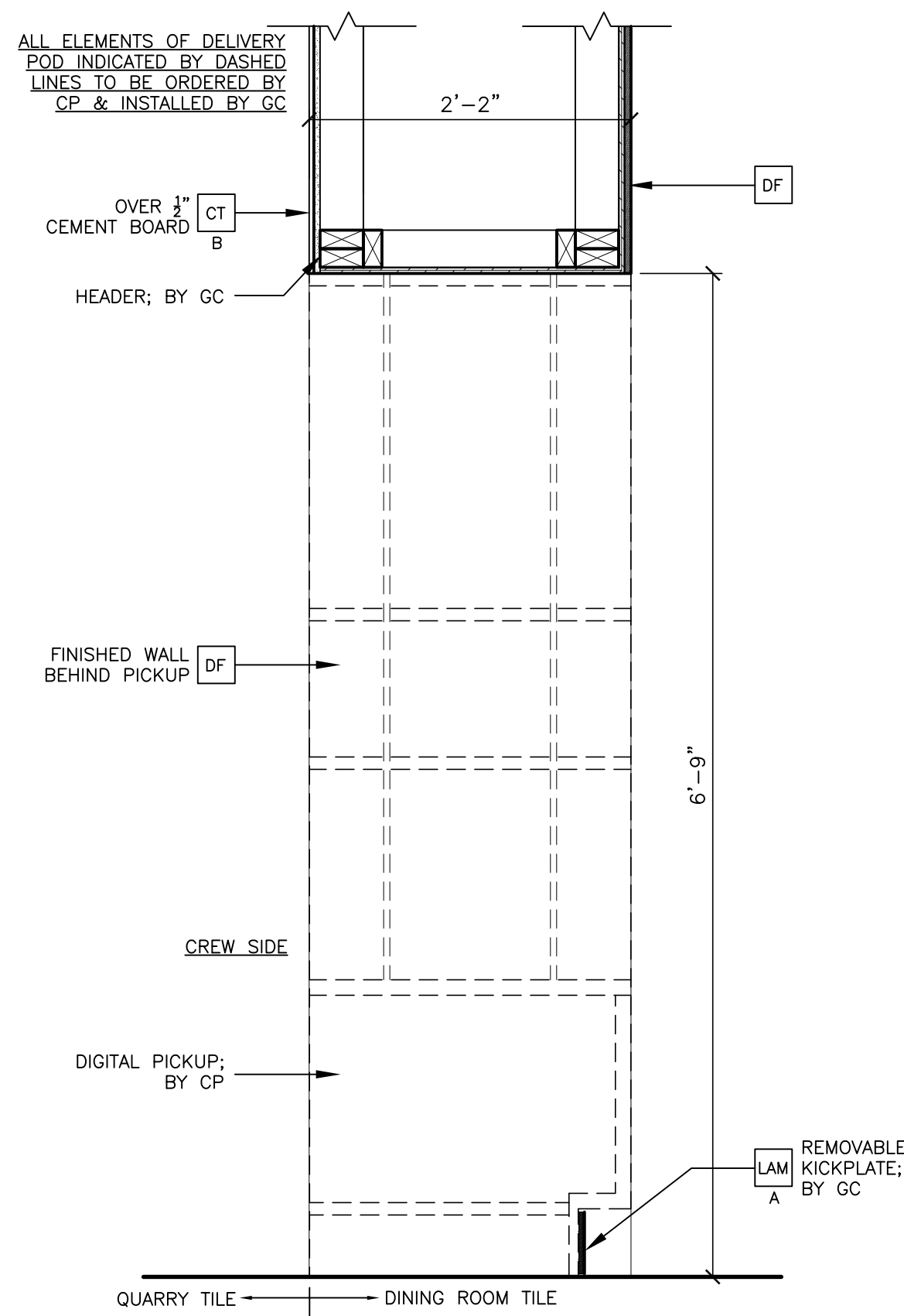
3 REAR ELEVATION
 1/4" = 1'-0"

- T/BLK'G @ PARAPET
ELEV. + 18'-9 1/2"
- T/ALUMINUM BATTEN
ELEV. + 18'-2"
- T/SLAB
ELEV. + 0'-0"

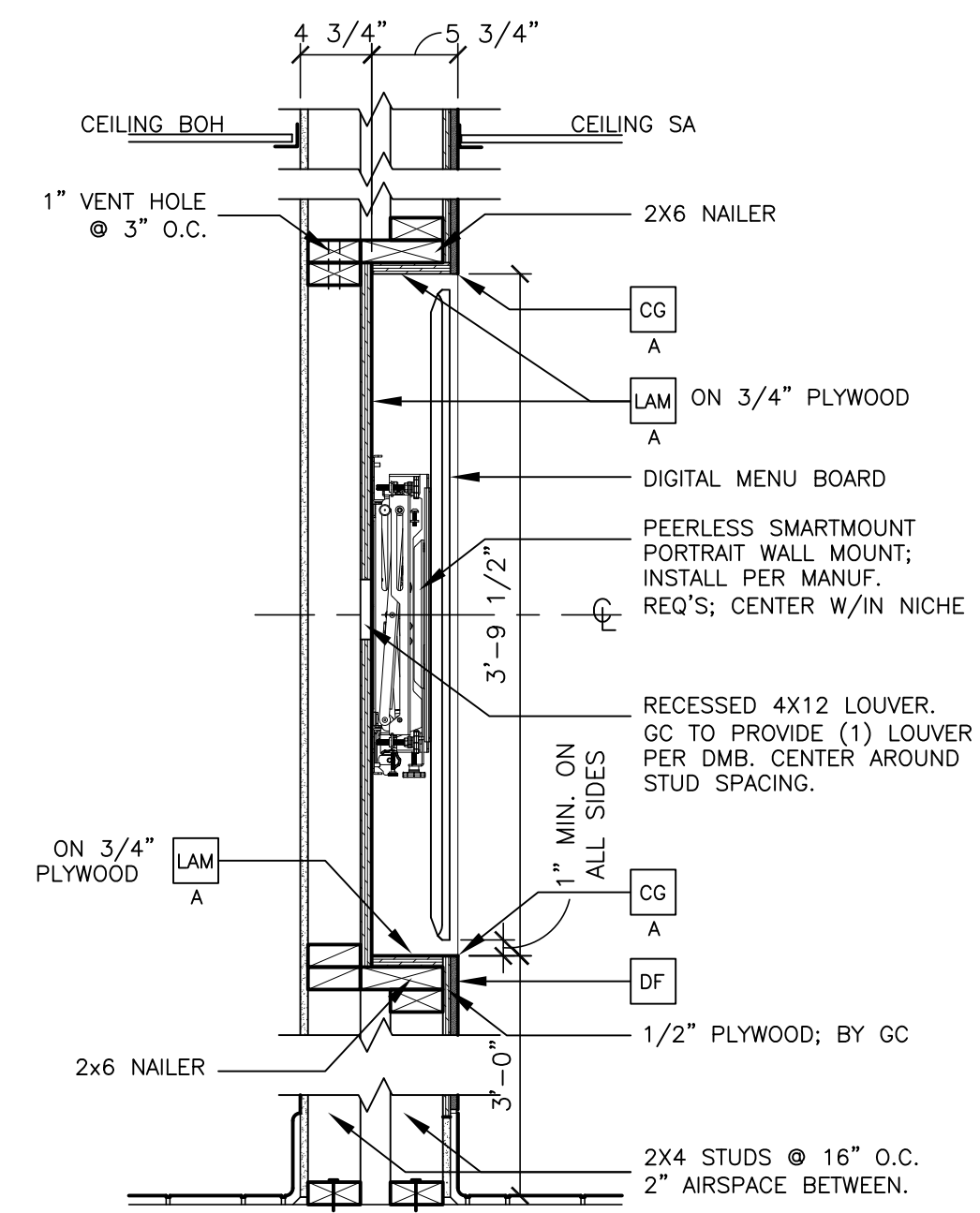
- B/METAL PANEL
ELEV. + 11'-7 1/2"
- B/CANOPY
ELEV. + 10'-11"
- T/WINDOW
ELEV. + 8'-0"
- T/DOOR
ELEV. + 7'-4"
- T/SILL
ELEV. + 6'-0"
- B/ALUMINUM BATTEN
ELEV. + 0'-6"
- T/SLAB
ELEV. + 0'-0"

KEY NOTES: DESERT COLOR SCHEME		EXTERIOR INSULATION FINISH SYSTEM (E.I.F.S.)		METAL FASCIA	
AL ALUMINUM BATTEN SYSTEM SIZE: 2"x2" PROFILE COLOR: WOOD GRAIN, BACKRAIL UNFINISHED, ENDCAP PAINTED TO MATCH SUBSTRATE: 1/2" EXTERIOR HIGH DENSITY OVERLAY (HDO) PLYWOOD, BB, GROUP 1, HDO BOTH FACES, APA TRADEMARKED. COURSE GRIT SAND SURFACES PRIOR TO PRIMING. PRIME AND PAINT BOTH SIDES AND ALL EDGES PRIOR TO INSTALLATION. SUBSTRATE COLOR: "IRON ORE" SW7069 BY SHERWIN WILLIAMS	C1 COLOR: RAL 7022	E EXTERIOR INSULATION FINISH SYSTEM (E.I.F.S.)	MF METAL FASCIA	1 TYPE:	UN METAL UNDERSORE COLOR: GOLD
AP ALPOLIC METAL PANEL (COLOR: RAL 7022)	C2 = RAL 7022	FB FIBER CEMENT TRIM: HARDITRIM BOARDS, 4/4 SMOOTH, 1 5/8" & 3 1/2" WIDTH, 3/4" THICK, HZ5, COLOR: TIMBER BARK (CHECK 1 5/8" PRE-PAINT AVAILABILITY)	C1 = PRE-FAB ANCHOR-TITE FASCIA	1 = BOTTOM TRIM AT METAL REVEAL PANEL	W1 EXTERIOR WINDOW ASSEMBLY - TEMPERED GLASS COLOR: DARK BRONZE - SEE ASSEMBLY NOTES ON 4/A5.0 & FRAME TYPES ON SHEET A6.0
C1 ALUMINUM CANOPY SYSTEM W/FASCIA COLOR: WHITE	C2 = BULK CO2 FILL BOX (EQPM SCHEDULE ITEM 49.00)	FL FIBER CEMENT LAP SIDING: HARDIEPLANK LAP SIDING, SMOOTH, 8 1/4" WIDTH, 7" EXPOSURE, HZ5, COLOR: TIMBER BARK	BO = BULK OIL FILL BOX (EQPM SCHEDULE ITEM 700.18)	3 = VERTICAL TRIM AT METAL REVEAL PANEL CORNERS, CLOSURES	W2 DRIVE-THRU WINDOW BY READY ACCESS MODEL: 600 SERIES, 36" SERVICE HEIGHT WITH TRANSOM, MANUAL OPEN; ELECTRONIC RELEASE COLOR: DEEP BRONZE
C2 ALUMINUM CANOPY SYSTEM COLOR: RAL 7022	FT FIBER CEMENT TRIM: HARDITRIM BOARDS, 4/4 SMOOTH, 1 5/8" & 3 1/2" WIDTH, 3/4" THICK, HZ5, COLOR: TIMBER BARK (CHECK 1 5/8" PRE-PAINT AVAILABILITY)	L1 RECESSED DOWN LIGHT FIXTURE - SEE ELECTRICAL COLOR: GOLD	RO ROOF DRAIN OVERFLOW PIPE PAINT TO MATCH SURROUNDING MATERIAL	COLOR: C1= WEATHERED ZINC C2= RAL 7022	XX SLIDE DIRECTION: RL = RIGHT TO LEFT LR = LEFT TO RIGHT
C3 ALUMINUM CANOPY TIEBACK GC TO PROVIDE CONTINUOUS BLOCKING ON WALL BEHIND TIEBACKS	GR GUARD RAIL - SEE SITE PLAN FOR EXACT LOCATION AND LENGTHSEE 4/A2.1 FOR DETAILS PAINT: "IRON ORE" SW 7069 BY SHERWIN WILLIAMS COLOR: GOLD	L2 RADIAL SCONCE LIGHT FIXTURE - SEE ELECTRICAL C1= WHITE C2= PLATINUM SILVER	S MCDONALD'S SIGNAGE BY OTHERS - UNDER SEPARATE PERMIT. C1= WEATHERED ZINC RACEWAY C2= RAL 7022 RACEWAY	ST CO2 STROBE/ALARM. SEE MECHANICAL DRAWINGS FOR SPECIFICATION.	
CJ CONTROL JOINT 1=TYPE: 1 = FIBER CEMENT PANELS	L1 HOLLOW METAL DOOR PAINT: HC-85 FARVIEW TALUPE BY BENJAMIN MOORE	LE ACCENT LIGHTING - SEE ELECTRICAL L1= LED LIGHT: L1 = SLIM LED (DOWN ONLY) L2 = INTEGRAL CANOPY FIXTURE L3 = UP ONLY FLOOD FIXTURE	SC STUCCO C1= COLOR: C1 = "IRON ORE" 7069 BY SHERWIN WILLIAMS		
D DECAL BY GRAPHICS SUPPLIER SURFACE APPLIED, FIELD INSTALLED, PRE CUT, PRE SPACED. SUPPLIERS: VOMELA (865) 330-7337. ann.bowen@vomela.com GEX INTERNATIONAL (847) 543-4600. mcdonaldsdecor@gfx.com	DE PIPE BOLLARD - PAINTED YELLOW (RMHC) COIN COLLECTOR UNIT: APERTURE WFT, #DTA2013 CALL 1-877-766-7642 TO ORDER	PT (RMHC) COIN COLLECTOR UNIT: APERTURE WFT, #DTA2013 CALL 1-877-766-7642 TO ORDER			

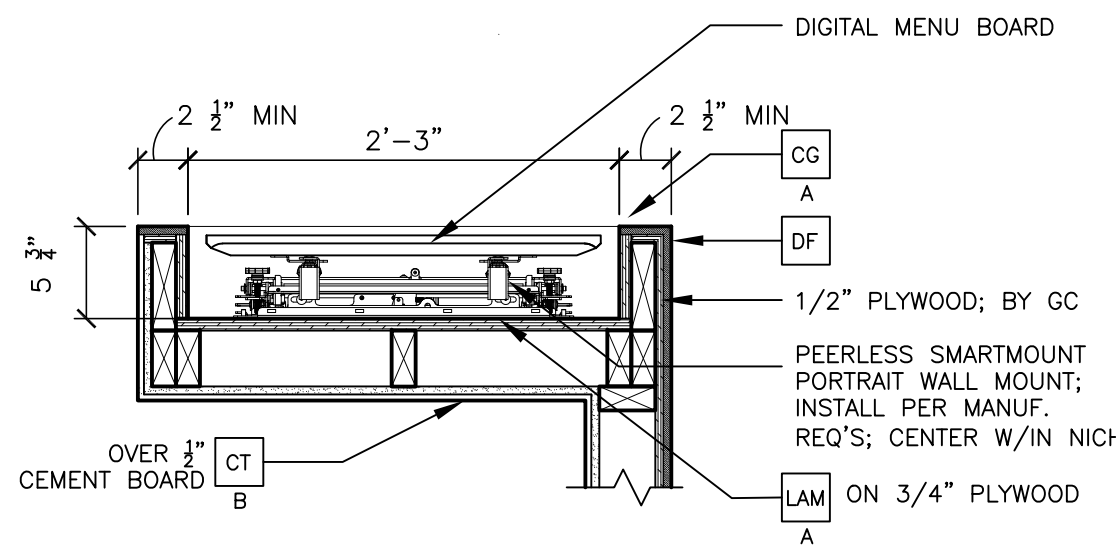
Robert Kempkes ARCHITECT 310 CENTRAL AVENUE, SUITE 200 SALEM, MISSOURI 64607 FAX: 816-263-2166 PHONE: 816-263-9679										
PREPARED BY: Robert Kempkes										
PREPARED FOR: McDonald's USA, LLC <small>These drawings and specifications are the confidential and proprietary property of McDonald's USA, LLC and shall not be copied or reproduced without written authorization. The contract documents were prepared in accordance with the contract documents for the project and are not suitable for use on a different site or at a later time. Use of these drawings for reference or example on another project requires the approval of McDonald's USA, LLC. The contract documents for the project are the contract documents for use on another project is not authorized.</small>										
DRAWN BY: S.O.	STD ISSUE DATE: 2022_08	REVIEWED BY: R.K.	DATE ISSUED: 12-21-2022							
TITLE: 2022 STANDARD BUILDING - BB20 45114-WOOD/WOOD										
DESCRIPTION: WOOD BEARING WALLS W/HARDBOARD SIDING WOOD ROOF TRUSS FRAMING EPS/BATTEN/ACM PANEL/HARDBOARD SIDING	UNIT: 24-1289.00.0									
SHEET NO. A2.1 ELEVATIONS										



15 SECTION @ DELIVERY POD
A3.1 1" = 1'-0"



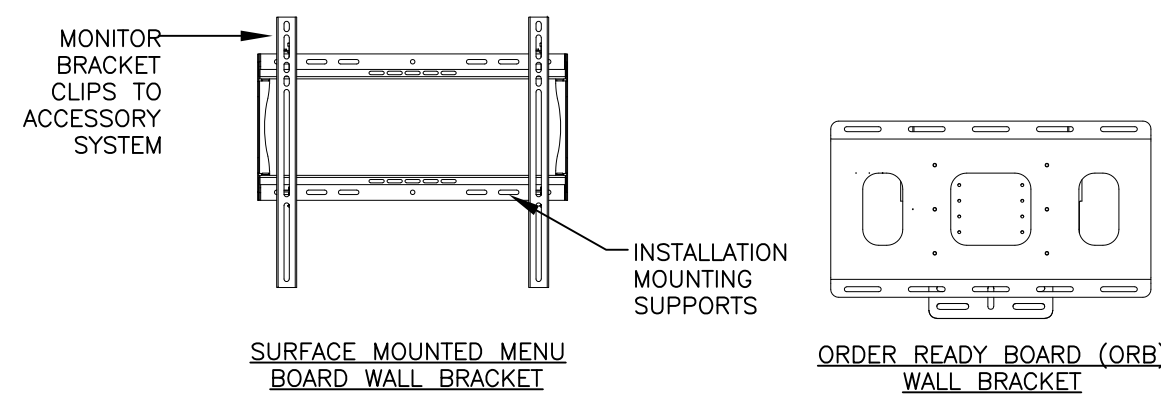
14 SECTION @ DIGITAL MERCHANDISER
A3.1 1" = 1'-0"



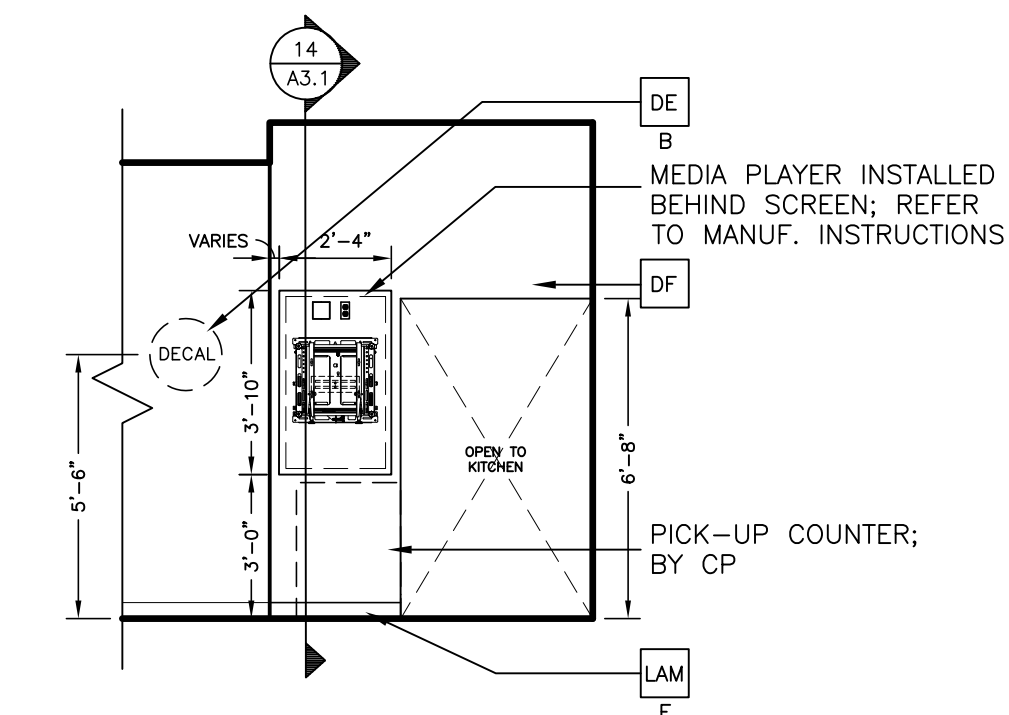
13 PLAN DETAIL @ DIGITAL MERCH.
A3.1 1" = 1'-0"

12 NOT USED
A3.1 -

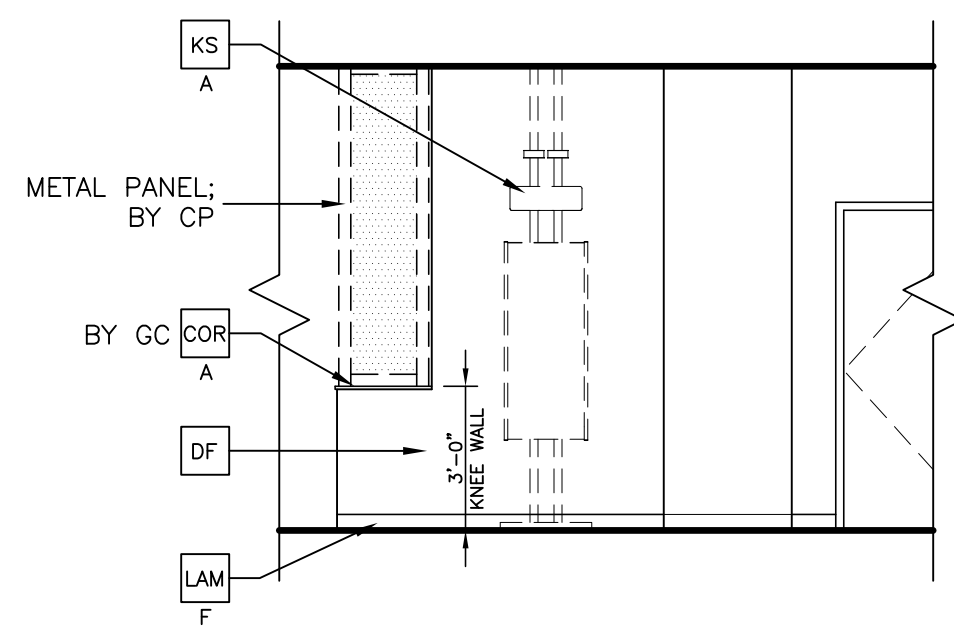
11 NOT USED
A3.1 -



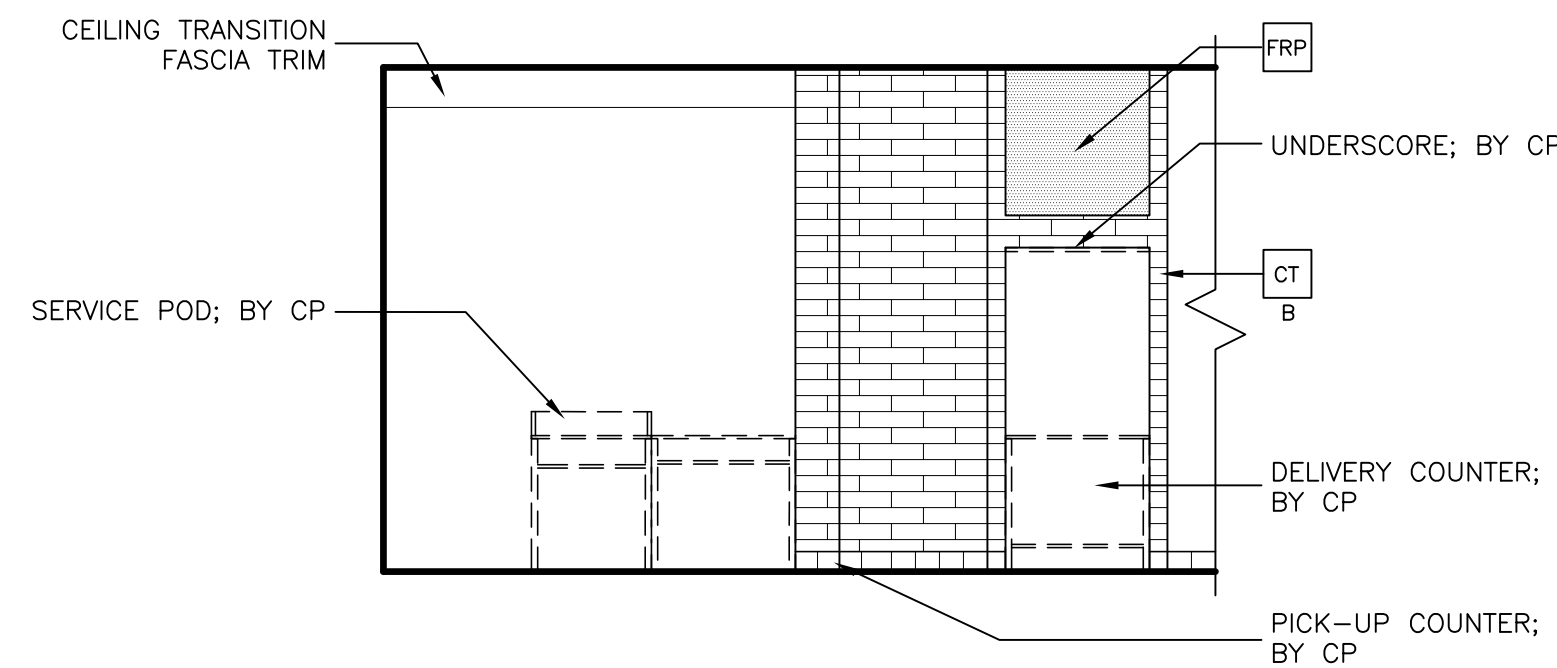
10 DIGITAL BOARD BRACKET DETAIL
A3.1 1" = 1'-0"



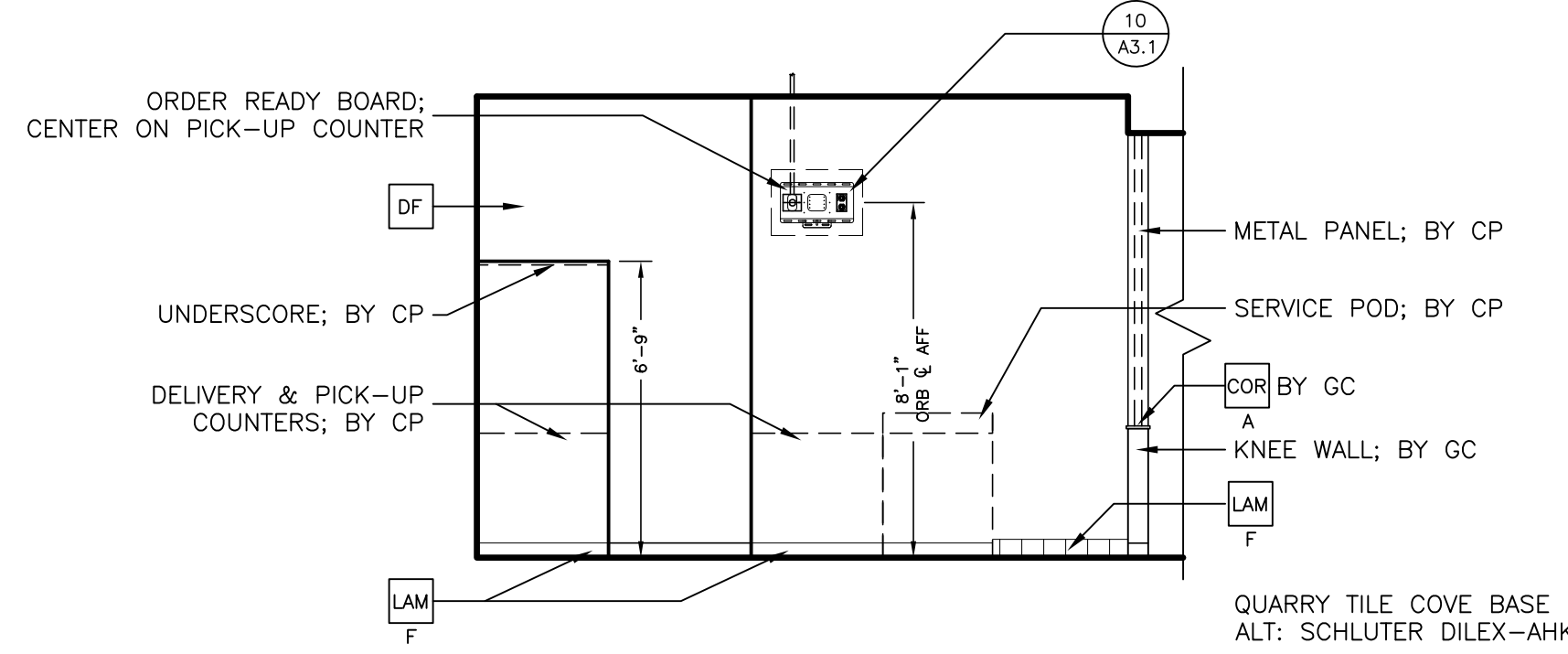
5 SERVICE AREA ELEVATION
A3.1 1/4" = 1'-0"



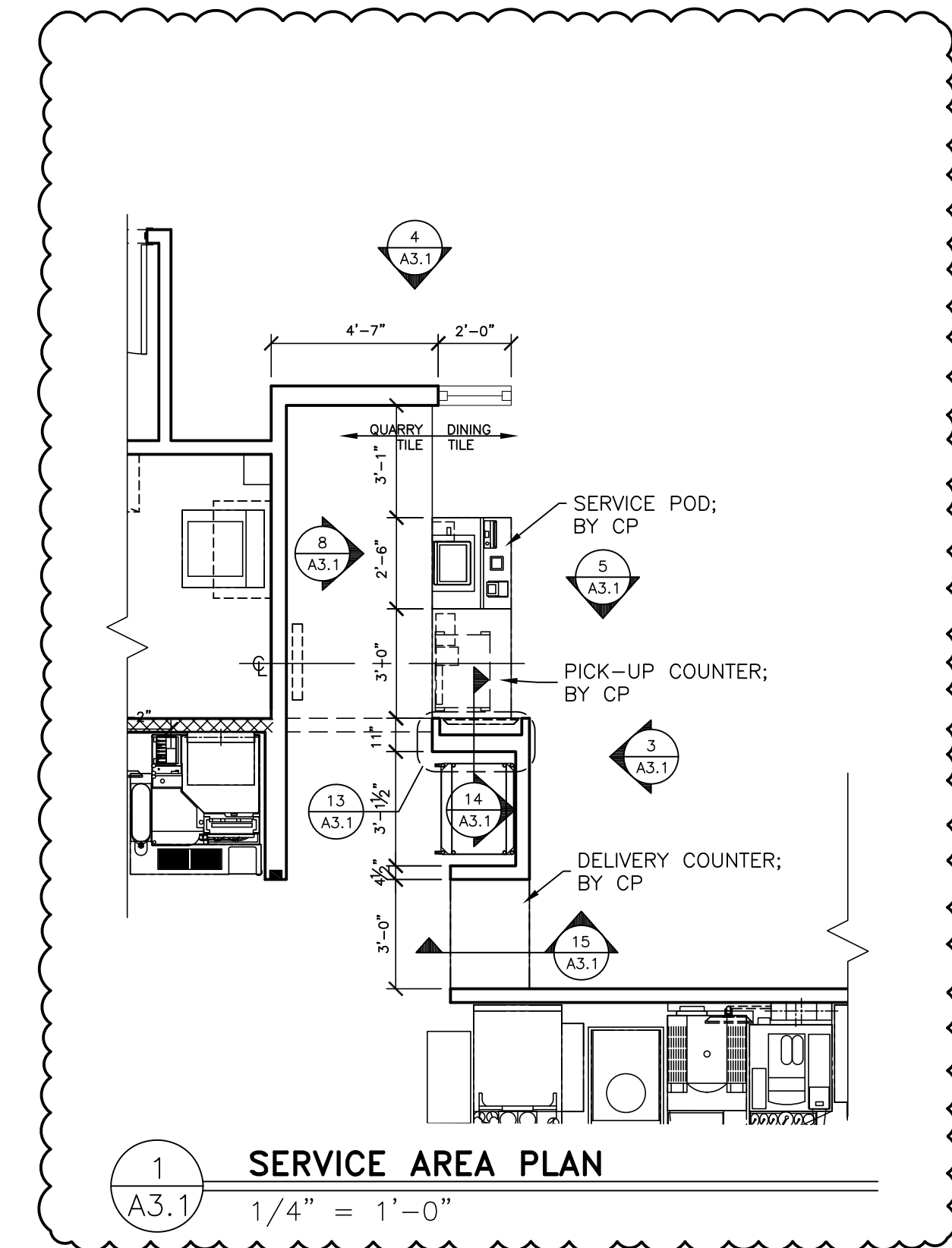
4 SERVICE AREA ELEVATION
A3.1 1/4" = 1'-0"



8 SERVICE AREA ELEVATION - CREW SIDE
A3.1 1/4" = 1'-0"



3 SERVICE AREA ELEVATION - CUSTOMER SIDE
A3.1 1/4" = 1'-0"



1 SERVICE AREA PLAN
A3.1 1/4" = 1'-0"

KEY NOTES

- CG CORNER GUARD: 3/4" ANGLE BY DECOR
A = BLACK
- COR CORIAN:
A = 1/2" CORIAN CAMEO WHITE
B = 1/2" CORIAN DEEP TITANIUM

- CT CERAMIC WALL TILE: CROSSVILLE - COLOR BY NUMBERS
COLOR: INTUITIVE GRAY. SIZE: 4"x12", PATTERN: RUNNING BOND
GROUT: MAPEI O2 PEWTER - JOINT TO BE 3/16" MAX.
USE THIS TILE WHEN HIGH LRV IS REQUIRED
COORDINATE WITH THE McDONALD'S AREA CONSTRUCTION MANAGER
- DE DECAL BY GC; ORDER FROM ANN BOWEN W/ VOMELA:
(ann.bowen@vomelo.com)
X = PICK-UP SOFFIT DECAL
A = McDELIVERY WALL DECAL; LOCATION DETERMINED BY SITE CONDITIONS
B = 'CASH/CREDIT' KIOSK SIGNAGE

- DF DECOR FINISH TO BE ORDERED/INSTALLED BY GC AND MANUFACTURED BY DECOR; REFER TO PORTFOLIO.
- FRP FIBERGLASS REINFORCED PLASTIC - PANOLAM, GRAY SMOOTH, CLASS C, .075. FOR ORDERING, CONTACT KIMBERLY LAWSON
Kimberly_Lawson@panolam.com 1-866-925-4377
- KS KIOSK SIGNAGE BY GC; ORDER FROM AMANDA GUSTAFSON W/ ALTURA
(agustafson@altura.com)
A = 'CREDIT ONLY' KIOSK SIGNAGE
B = 'CASH/CREDIT' KIOSK SIGNAGE

- LAM LAMINATE:
X = COLOR:
A = IDMB / DIG. MERCH., SMOOTH BLACK PLASTIC LAMINATE BY GC
B = TRASH/ COND., WHITE PLASTIC LAMINATE BY GC
C = TRASH/ COND., LAMITECH GRAPHITE K MATTE FINISH
D = SEE DECOR DRAWINGS. MFR BY DECOR. PURCHASE AND INSTALL BY GC
E = McDELIVERY UNDERSCORE, LAMITECH GOLDEN
F = BASE BOARD, FORMICA COMPACT LAMINATE MATTE BLACK BY GC

GENERAL NOTES

- 1 ALL WALL LAMINATE PANELING MANUFACTURED BY DECOR PURCHASE AND INSTALL BY GC, UNO.
- 2 ALL ELEMENTS 'BY CP' TO BE ORDERED BY CENTRAL PURCHASING AND INSTALLED BY GC, UNO.
- 3 A&E TO VERIFY LOCATION AND QUANTITY OF LIGHTS AND DIFFUSERS AFTER SERVICE AREA WALL ADDITION.

PREPARED FOR: **McDonald's USA, LLC**
 2022 STANDARD BUILDING - BB20
 45114-WOOD/WOOD
 DESCRIPTION: WOOD BEARING WALLS W/HARDBOARD SIDING
 WOOD ROOF TRUSS FRAMING
 SFS/BATTEN/ADM PANEL/HARDBOARD SIDING
 SITE ADDRESS: 1000 S Main Street, SALEM, MO
 24-1289.00.0
A3.1
 SERVICE AREA DETAILS

© 2021 McDonald's USA, LLC
 These drawings and specifications are the confidential and proprietary property of McDonald's USA, LLC and shall not be copied or reproduced without written authorization. The contract documents were prepared not suitable for use on a different site or at a later time. Use of these drawings for reference or example on another project requires the the contract documents for reuse on another project is not authorized.

PREPARED BY: **Robert Kempkes**
 ARCHITECT
 310 CENTRAL AVENUE, SUITE 200
 SALEM, MO 64603
 FAX: 816.224.1166 PHONE: 816.224.6469

STATE OF MISSOURI
 D. ROBERT KEMPKES
 ARCHITECT
 19-0117-0002

NO.	REV.	DATE	DESCRIPTION
A	08-25-23		ESE UPDATE
SO			BY