

REV	DATE	DESCRIPTION

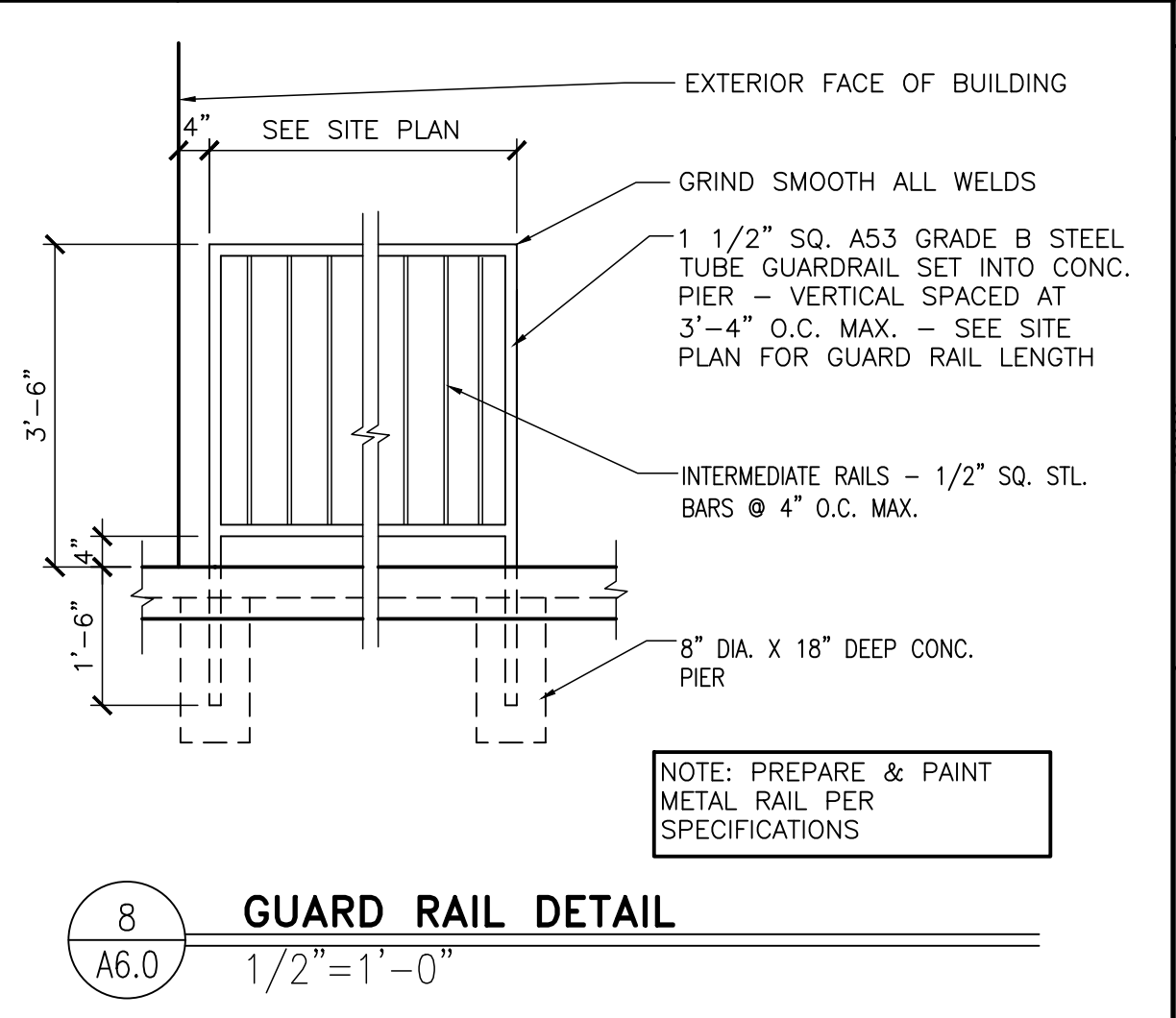
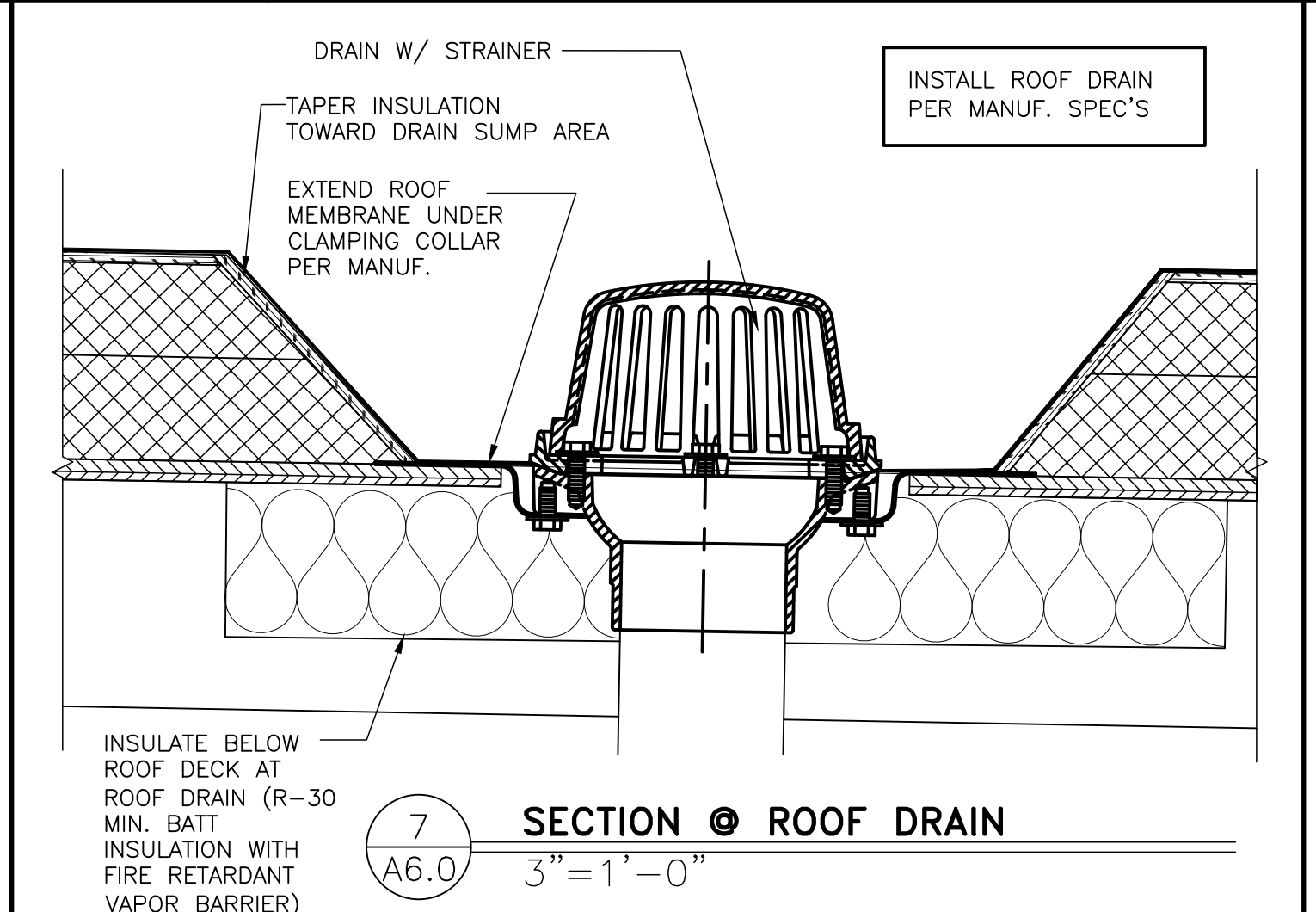
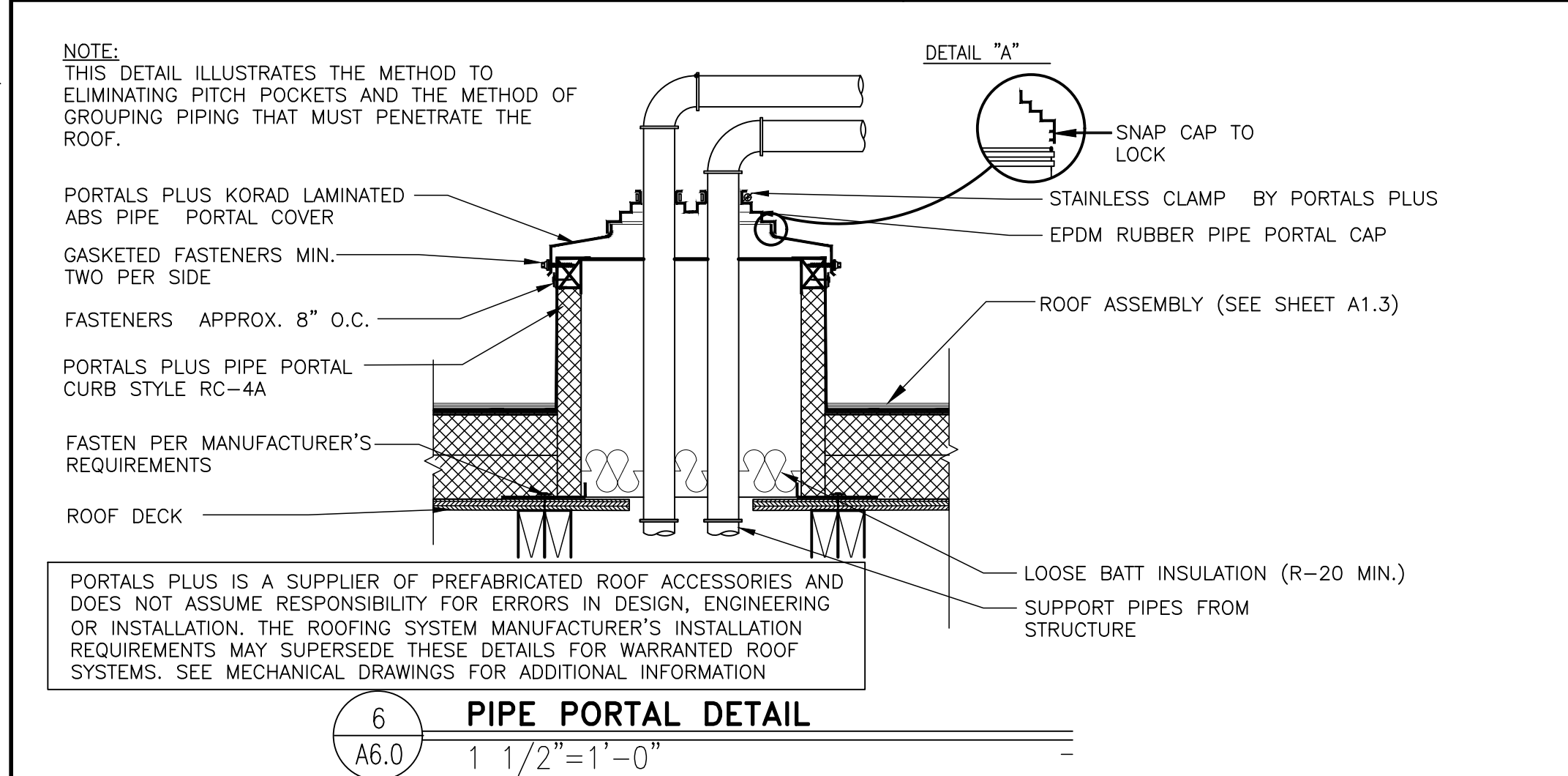
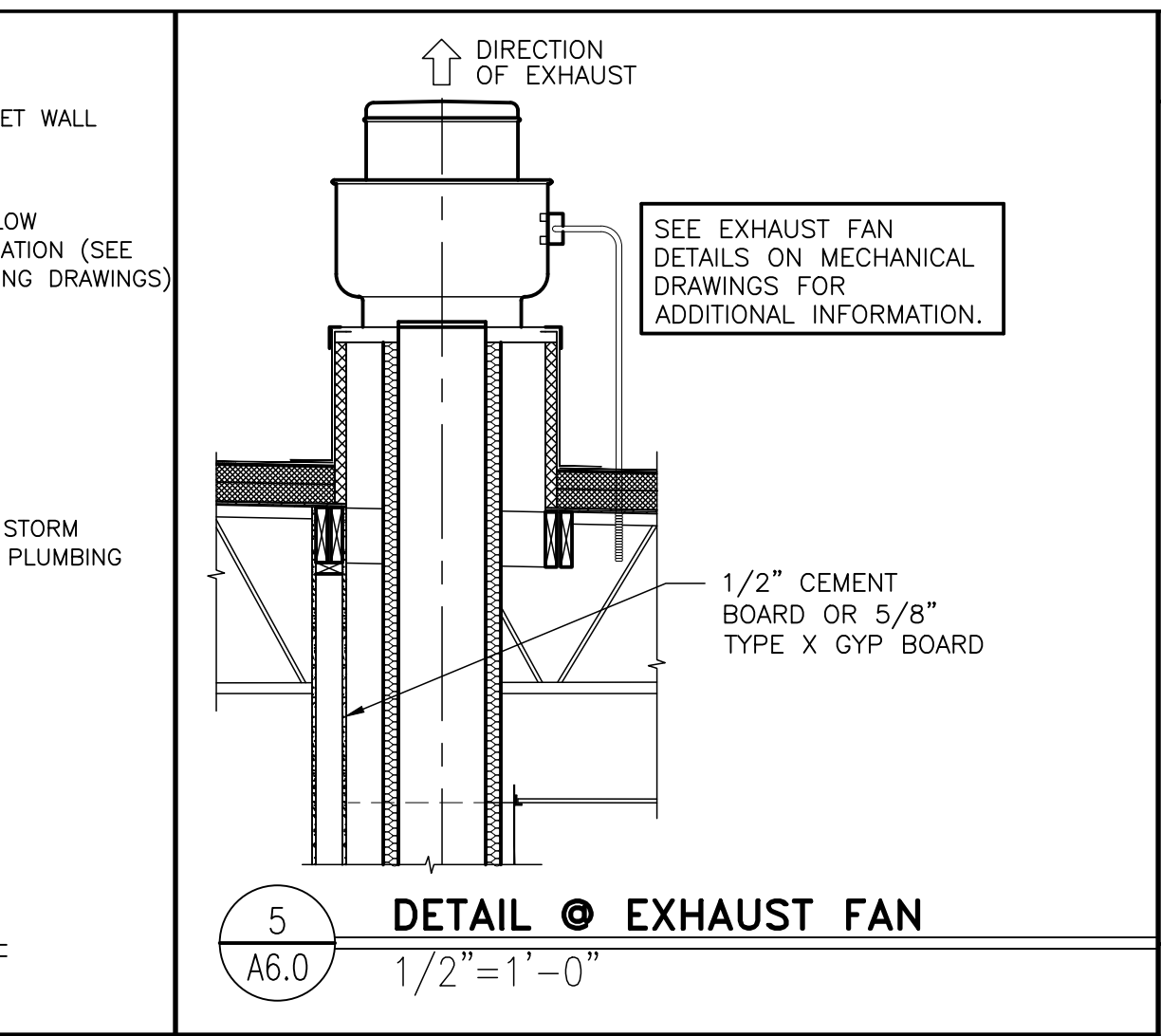
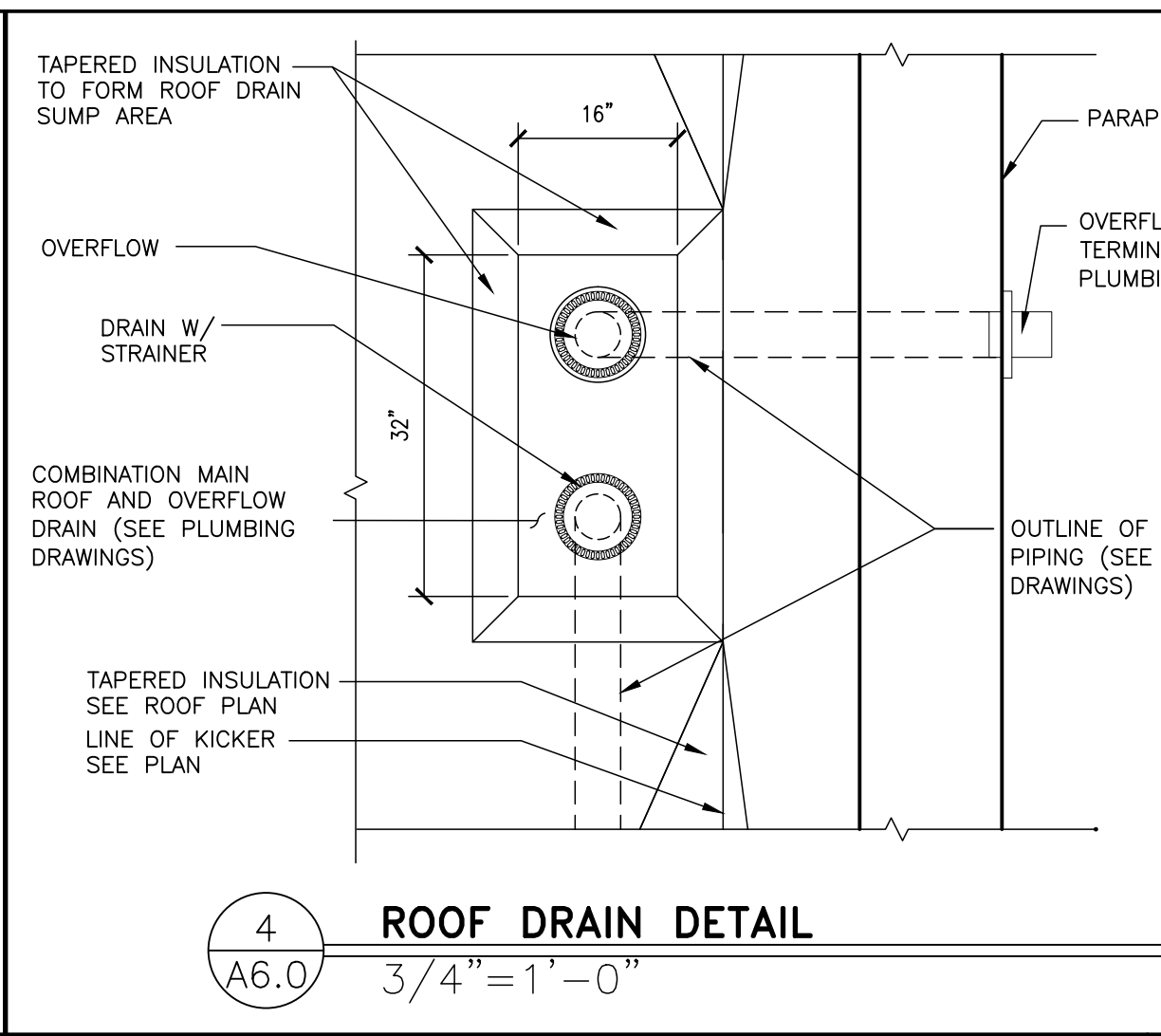
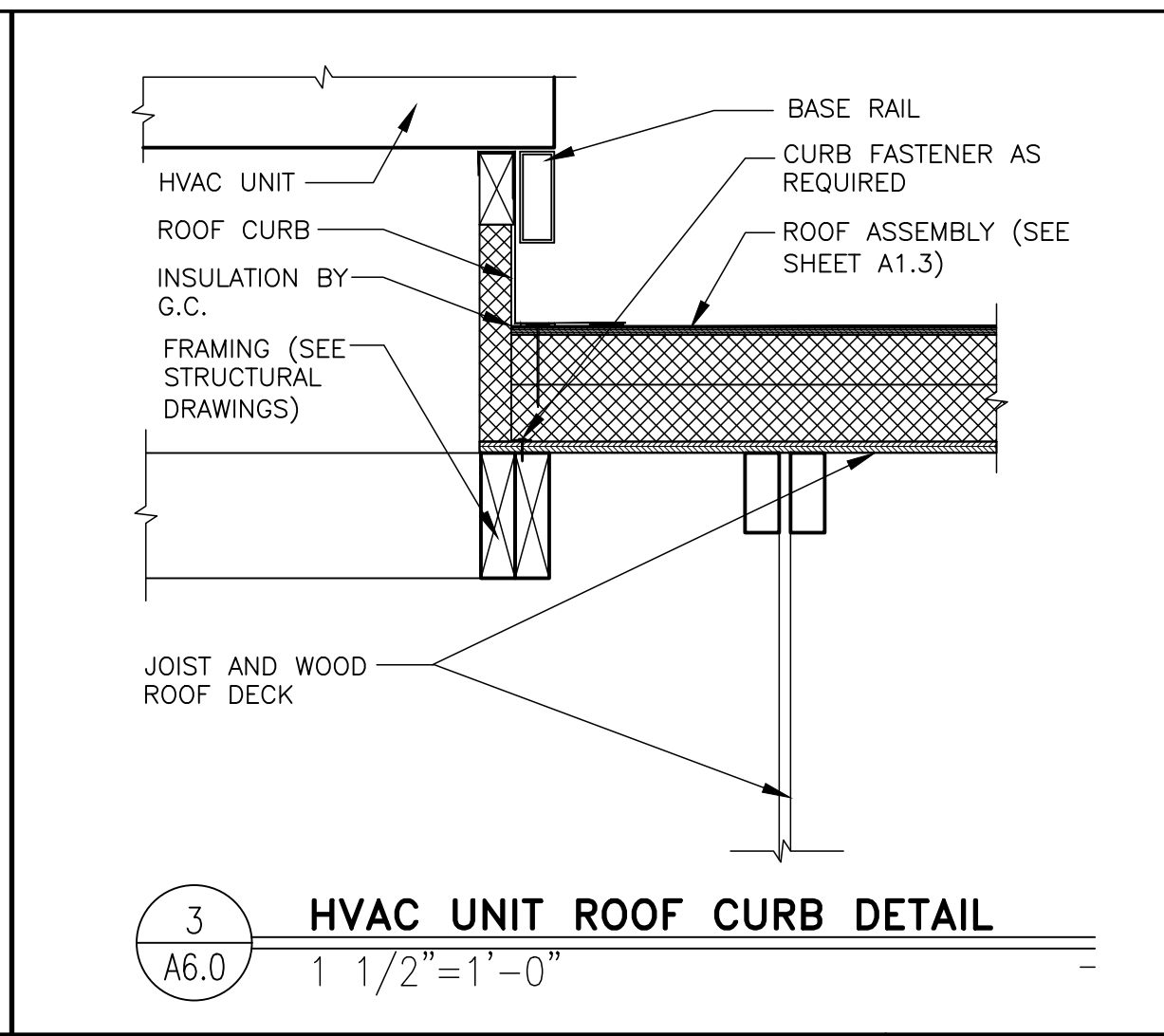
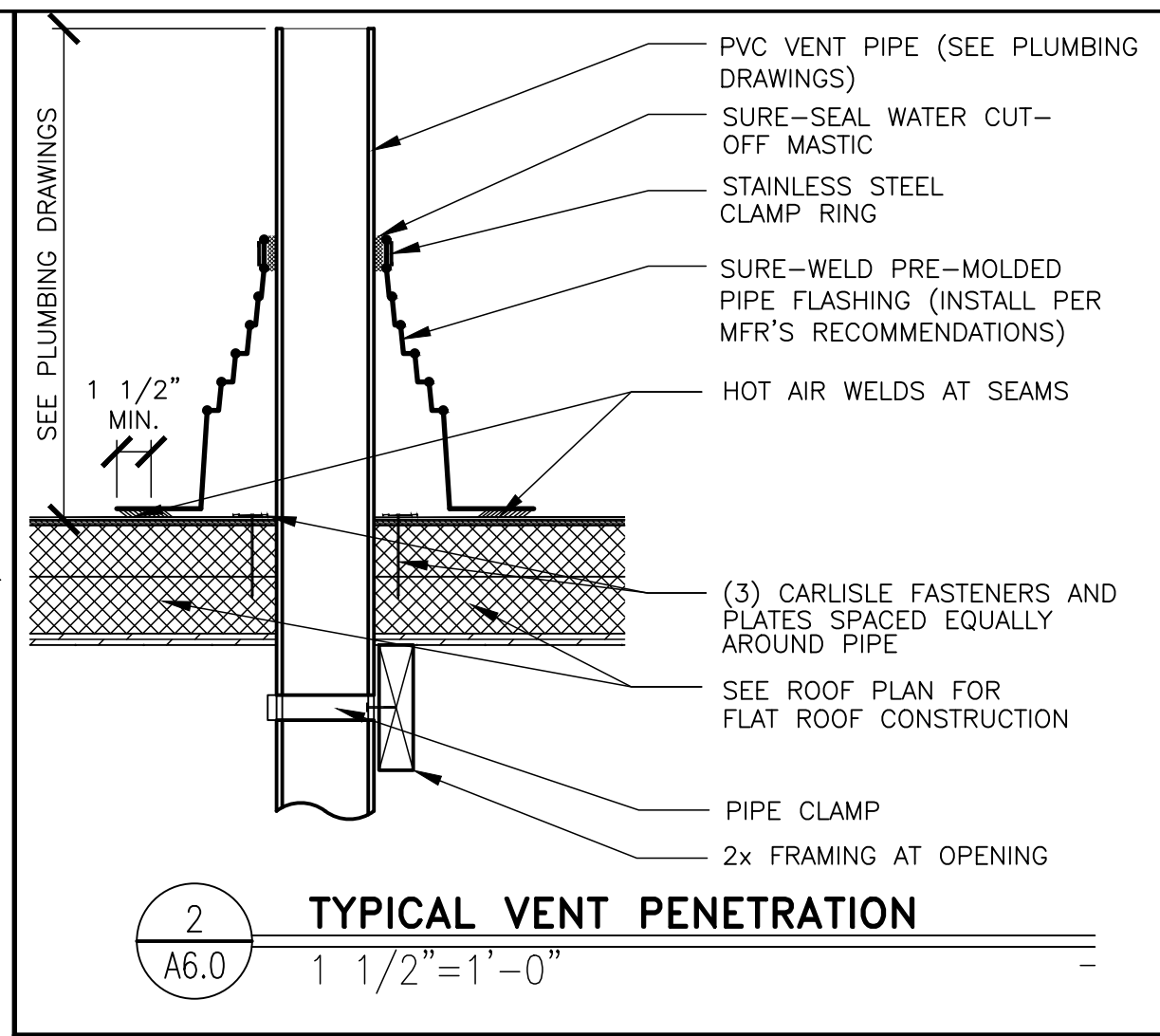
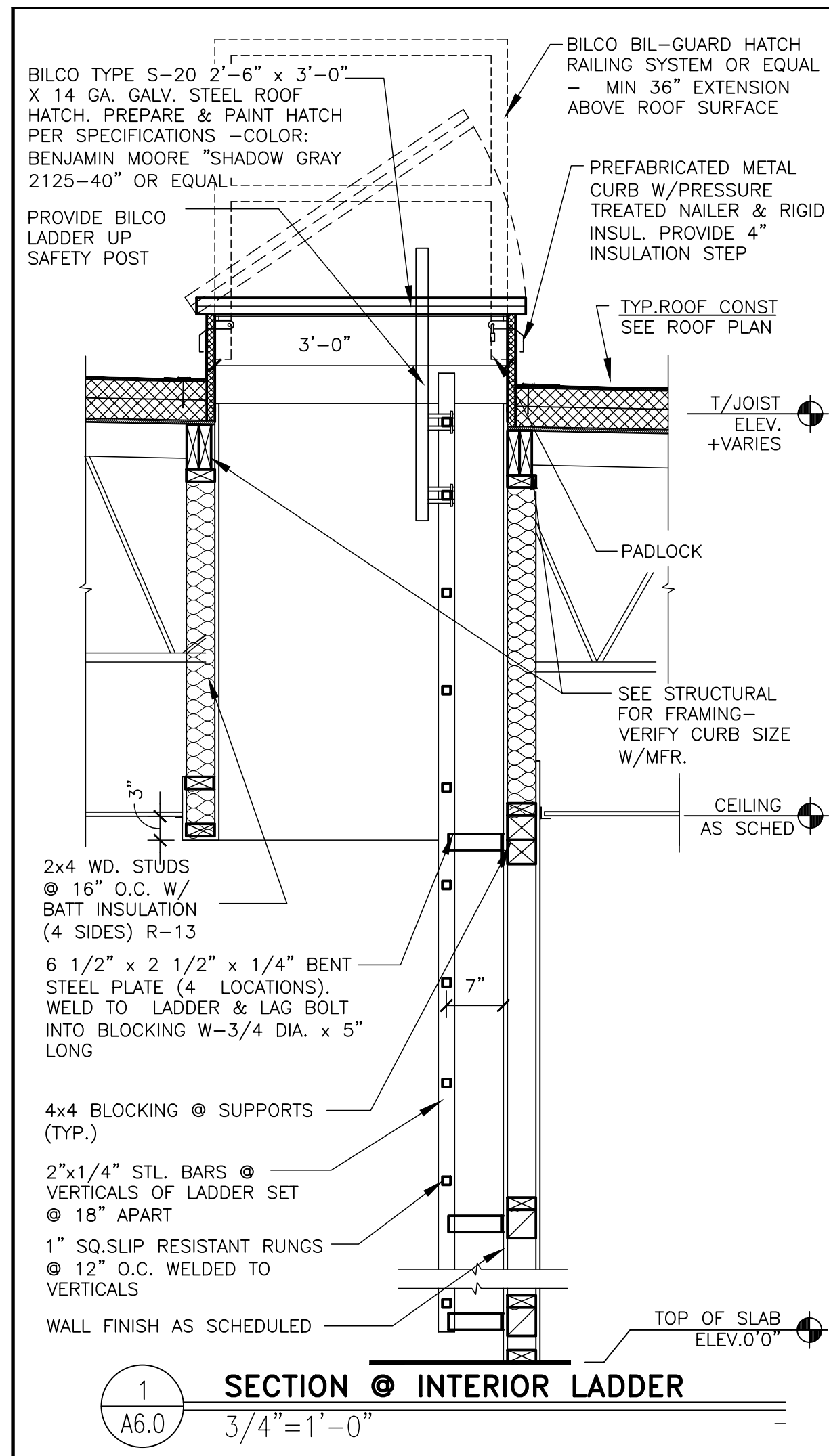
PREPARED BY: **Robert Kempkes**  
 ARCHITECT  
 3102 W. STATE ST. SUITE 200  
 ST. LOUIS, MO 63103  
 TEL: 314.433.8888  
 FAX: 314.433.8889

© 2021 McDonald's USA, LLC  
**McDonald's USA, LLC**  
 These drawings and specifications are the confidential and proprietary property of McDonald's USA, LLC and shall not be copied or reproduced without written authorization. The contract documents were prepared not suitable for use on a different site or at a later time. Use of these drawings for reference or example on another project requires the the contract documents for reuse on another project is not authorized.

DRAWN BY: **SO**  
 STD ISSUE DATE: **2022\_08**  
 REVIEWED BY: **R.K.**  
 DATE ISSUED: **12-21-2022**

TITLE: **2022 STANDARD BUILDING - BB20**  
 45114-WOOD/WOOD  
 DESCRIPTION: **WOOD BEARING WALLS W/HARDBOARD SIDING**  
 WOOD ROOF TRUSS FRAMING  
 E/F/S/BATTEN/ADM PANEL/HARDBOARD SIDING  
 SITE ID: **024-1289** SALEM, MO

SHEET NO. **A5.3**  
 WALL SECTIONS



**GENERAL NOTES:**

- ALL EXIT DOORS SHALL BE KEYLESS IN THE DIRECTION OF EGRESS.
- THE OPENING FORCE OF ALL EXT. PUSH/PULL DOORS SHALL NOT EXCEED 8 1/2 LBS.
- THE OPENING FORCE OF ALL INTERIOR PUSH/PULL DOORS SHALL NOT EXCEED 5 LBS.
- PROVIDE PANIC HARDWARE FOR ALL EXTERIOR DOORS AS NOTED ON THE DOOR SCHEDULE.
- ALL DOOR HARDWARE SHALL NOT REQUIRE TIGHT GRASPING, TIGHT PINCHING OR TWISTING OF THE WRIST TO OPERATE.

**DOOR #1 - ENTRY DOOR/EMERGENCY EXIT (1A NOT USED)**

- 1 EA CLOSER LCN 4021 x 18
- 3 EA HINGES OFFSET PIVOT ANSI -A-156.4 GRADE 1; PROVIDE EXPOSED PARTS OF CAST ALUMINUM ALLOY, AS SUPPLIED BY DOOR MANUFACTURER.
- 1 EA DOOR #1 ONLY PULL HANDLE ROCKWOOD MFG. MODEL: RM3311. SIZE: 1-1/4" DIA. CTC: 5'-10". FINISH: TO MATCH STOREFRONT DOOR. OFFSET MOUNTING; TYPE 1XHD - THRU BOLT HEAVY DUTY.
- 1 EA (DOOR #1A ONLY) PANIC HARDWARE ADAMS RITE MFG. CO. 8800 SERIES WITH OUTSIDE CYLINDER (FINISH TO MATCH STOREFRONT DOOR)
- 1 EA THRESHOLD NATIONAL GUARD PRODUCTS, INC. SADDLE TYPE THRESHOLD 325, 36" WIDE x 1/2" RISE (ADA ACCESSIBLE).
- 1 EA WEATHER STRIPPING; PROVIDE COMPRESSION WEATHER STRIPPING AGAINST FIXED STOPS. AT OTHER EDGES PROVIDE SLIDING WEATHER STRIPPING RETAINED IN ADJUSTABLE STRIP MORTISED INTO DOOR EDGE. PROVIDE EPDM OR VINYL GASKET WEATHER STRIPPING IN BOTTOM DOOR RAIL ADJUSTABLE FOR CONTACT W/ THRESHOLD.
- 1 EA SIGN MOUNT ONTO DOOR, TO READ "THIS DOOR MUST REMAIN UNLOCKED WHENEVER THE BUILDING IS OCCUPIED/DURING BUSINESS HOURS."

**DOOR #2 & #2A - VESTIBULE**

- 1 EA CLOSER LCN 4041 x 18
- 3 EA HINGES OFFSET PIVOT ANSI -A-156.4 GRADE 1; BY DOOR MANUFACTURER.
- 1 EA PUSH/PULL HANDLE HAGER PUSH/PULL SET 164D/V/B.
- 1 EA (DOOR #2A) PANIC HARDWARE ADAMS RITE MFG. CO. 8800 SERIES WITH OUTSIDE CYLINDER (FINISH TO MATCH STOREFRONT DOOR)

**DOOR #3 - STORAGE DELIVERY**

- 1 EA HINGE 780-112HD 83" ALUM HAGER
- 1 EA CLOSER 4111 H-CUSH ALUM LCN
- 1 EA PANIC 9975EO-LD 48" SP28 V.DUPRIN
- 1 EA TRIM 990DT US26D V.DUPRIN
- 1 EA ALARM LOCK PG21MSS ALARM
- 1 EA LOCKGUARD CLP110 US32D DON-JO
- 1 EA TREADPLATE 24 X 46 UMCO
- 1 EA WTH/STP160V 48 X 84 N.GUARD
- 1 EA THRESHOLD 325HD 48" N.GUARD
- 1 EA SWEEP 101VA 48" N.GUARD
- 1 EA VIEW FRAME LVGLFMD 9 X 9 DKB W/FLAP ON INSIDE N.GUARD
- 1 EA ALARM LOCK PG21MSS ALARM
- 1 EA MORTISE CYL HOUSING 7PIN SFIC 626
- 1 EA 7 PIN CONSTRUCTION CORE FOR ABOVE 626
- 1 EA CONTROL KEY FOR ABOVE
- 1 EA PG21-MSS ADVANCED DOOR ALARM

**DOOR #4 - REAR EXIT**

- 1 EA HINGE 780-112HD 83" ALUM HAGER
- 1 EA CLOSER 4111 H-CUSH ALUM LCN
- 1 EA PANIC 9975EO-LD 48" SP28 V.DUPRIN
- 1 EA TRIM 990DT US26D V.DUPRIN
- 1 EA ALARM LOCK PG21MSS ALARM
- 1 EA LOCKGUARD CLP110 US32D DON-JO
- 1 EA TREADPLATE 24 X 46 UMCO
- 1 EA WTH/STP160V 48 X 84 N.GUARD
- 1 EA THRESHOLD 325HD 48" N.GUARD
- 1 EA SWEEP 101VA 36" N.GUARD
- 1 EA PG21-MSS ADVANCED DOOR ALARM

**DOOR #5 - RESTROOM ENTRY**

- 3 EA HINGE BB1279 4 1/2 X 4 1/2 US26D HAGER
- 1 EA CLOSER LDP4031 SNB ALUM LCN
- 1 EA PUSH PLATE 305 4 X 32 US32D 40" AFF MOUNTED TO CENTER OF PLATE
- 1 EA PULL PLATE LADDER PULL HANDLE WITH DECORATIVE FIXING, 32" L1" DIA #5-32-1000 - UMCO 32D, 40" AFF MOUNTED CENTER OF PULL
- ALT. OPTION: 1 EA PULL PLATE SANITORSR. ALT. OPTION: 1 EA PULL-PUSH BUTTON CYLINDRICAL LOCK - TRILGY DL700 US26D CHROME
- 2 EA KICKPLATE 190S 8 X 34 US32D HAGER
- 1 EA DOOR STOP 236W US32D HAGER
- 1 EA FINGER GRD MKIA PUSH SIDE BRN F.SAFE
- 1 EA FINGER GRD MKIB PULL SIDE BRN F.SAFE
- 1 EA STEP/PULL PULL SIDE (OPTIONAL)

**DOOR #6 - ADA STALL**

- 2 EA HINGE 1250 4 1/2 X 4 1/2 US26D HAGER
- 1 EA HINGE BB1279 4 1/2 X 4 1/2 US26D HAGER
- 1 EA DEADBOLT B571 X 10-087 214EE X 12 X 291 X 626
- 2 EA BACK TO BACK LADDER PULL HANDLE, 16" L, 1" DIA #5-16-1000 BTB-UMCO 32D MOUNTED 6" FROM EDGE OF DOOR TO CENTER OF SCREWS - 28 1/2" MOUNTED 28 1/2" FROM TOP OF DOOR TO C/L OF PULL
- 1 EA ROBE HOOK 917 BRADLEY
- 1 EA DOOR STOP 236W US32D HAGER

**DOOR #6A - STANDARD STALL**

- 2 EA HINGE 1250 4 1/2 X 4 1/2 US26D HAGER
- 1 EA HINGE BB1279 4 1/2 X 4 1/2 US26D HAGER
- 1 EA DEADBOLT B571 X 10-087 214EE X 12 X 291 X 626
- 2 EA BACK TO BACK LADDER PULL HANDLE, 16" L, 1" DIA #5-16-1000 BTB-UMCO 32D MOUNTED 6" FROM EDGE OF DOOR TO CENTER OF SCREWS - 28 1/2" MOUNTED 28 1/2" FROM TOP OF DOOR TO C/L OF PULL
- 1 EA ROBE HOOK 917 BRADLEY
- 1 EA DOOR STOP 236W US32D HAGER

**DOOR #7 - DINING ROOM JANITORS CLOSET**

- 3 EA HINGE BB1279 4 1/2 X 4 1/2 US26D HAGER
- 1 EA LOCK NDB0PD RHO 626 SCHLAGE

**DOOR #8 - COMPUTER CLOSET**

- 4 EA HINGE BB1279 4 1/2 X 4 1/2 US26D HAGER
- 1 EA LOCK NDB0PD RHO 626 SCHLAGE
- 1 EA LOUVER L700RX DKB 12 X 18 N.GUARD

**DOOR #8A - COMPUTER CLOSET**

- 8 EA HINGE BB1279 4 1/2 X 4 1/2 US26D HAGER
- 1 EA LOCK NDB0PD RHO 626 SCHLAGE
- 2 EA FLUSH BOLT 283D US26D HAGER

**DOOR #9 - COOLER**

1. ALL DOOR HARDWARE FOR THE REFRIGERATED COOLER / FREEZER SHALL BE PROVIDED BY THE MANUFACTURER.  
MANUFACTURER: KOLPAK @ HY 641 N. McCORKLE PARK ROAD PARSONS, TN 38363 PHONE: 800-344-4675

HARDWARE PROVIDED:

- MAGNETIC PERIMETER DOOR GASKET
- THRESHOLD REINFORCED PLASTIC (FRP)
- POSS-SEAL DOOR CLOSURE
- STATIONARY CHROME DOOR PULL HANDLE
- INTERIOR SAFETY RELEASE HANDLE
- HINGES - BRUSHED CHROME CAST ALLOY

**DOOR #10**

- 1 EA HINGE 780-112HD 83" ALUM HAGER
- 1 EA CLOSER 1461 RW/PA ALUM LCN
- 1 EA LOCK NDB0PD RHO 626 SCHLAGE
- 1 EA ELEC STRIKE 6211 24V DC FSE US32D SCHLAGE
- 1 EA PWR SUPPLY PS902 SCHLAGE
- 1 EA ANNUNCIATOR BSV-24P SURFACE MOUNTED
- 3 EA PUSH BUTTON 621-RD-DA HDP 626 SCHLAGE
- 1 EA TREADPLATE 24 X 34 UMCO
- 1 EA VIEW FRAME LFR1A100 8 X 27 DKB N.GUARD
- 1 EA GLASS 5 X 26 X 1/4 UMCO

**DOOR #11 (NOT USED) PLAYPLACE RESTROOM**

- 3 EA HINGE BB1279 4 1/2 X 4 1/2 US26D HAGER
- 1 EA CLOSER LDP4031 SNB ALUM LCN
- 1 EA LOCK ND405 RHO 626 SCHLAGE
- 2 EA KICKPLATE 190S 8 X 34 US26D HAGER
- 1 EA DOOR STOP 236W US32D HAGER
- 2 EA TOE GUARD 2029A 36" N.GUARD
- 1 EA FINGER GRD MKIA PUSH SIDE BRN F.SAFE
- 1 EA FINGER GRD MKIB PULL SIDE BRN F.SAFE

**DOOR #12 (EMERGENCY EXIT ONLY) (NOT USED) - PLAYPLACE EMERGENCY EXIT**

- 1 EA CLOSER: LCN 4041 x 18
- 3 EA HINGES: OFFSET PIVOT SET, GRADE 1 CAST ALUMINUM ALLOY AS SUPPLIED BY DOOR MANUFACTURER.
- 1 EA PANIC HARDWARE ADAMS RITE MFG. CO. 8800 SERIES (EXIT ONLY) (FINISH TO MATCH STOREFRONT DOOR)
- 1 EA THRESHOLD NATIONAL GUARD PRODUCTS, INC. SADDLE TYPE THRESHOLD 325, 36" WIDE x 1/2" RISE (ADA ACCESSIBLE).
- 1 EA WEATHER STRIPPING; PROVIDE COMPRESSION WEATHER STRIPPING AGAINST FIXED STOPS. AT OTHER AGAINST FIXED EDGES PROVIDE SLIDING WEATHER STRIPPING RETAINED IN ADJUSTABLE STRIP MORTISED INTO DOOR EDGE. PROVIDE EPDM OR VINYL GASKET WEATHER STRIPPING IN BOTTOM DOOR RAIL ADJUSTABLE FOR CONTACT W/THRESHOLD.
- 1 EA ALARM DETEX MODEL NO. EAX-500

**DOOR #13 (NOT USED) 38111 COUNTER DOOR**

- 3 EA HINGE BB1279 4 1/2 X 4 1/2 US26D HAGER
- 1 EA CLOSER LDP4031 SNB ALUM LCN
- 1 EA LOCK NDB0PD RHO 626 SCHLAGE
- 1 EA VIEW FRAME LFR1A100 8 X 34 DKB N.GUARD
- 1 EA GLASS 7 X 33 X 1/4 UMCO

**DOOR #14 (NOT USED) MANAGERS OFFICE**

- 3 EA HINGE BB1279 4 1/2 X 4 1/2 US26D HAGER
- 1 EA LOCK NDB0PD RHO 626 SCHLAGE
- 1 EA VIEW FRAME LFR1A100 24 X 30 DKB N.GUARD
- 1 EA GLASS 23 X 29 X 1/4 CLEAR UMCO
- 1 EA 7 PIN CONSTRUCTION CORE 626
- 1 EA CONTROL KEY FOR ABOVE

**DOOR #15 CO2**

- 1 EA HINGE 780-112HD 83" ALUM HAGER
- 1 EA LOCK NDB0PD RHO 626 SCHLAGE
- 1 EA LOCK GUARD CLP110 US32D DON JO
- 1 EA WTH/STP 160V 36 X 84 N.GUARD
- 1 EA THRESHOLD 425E 36" N.GUARD
- 1 EA SWEEP 101VA 36" N.GUARD
- 1 EA SEC. LOUVER LVRS6-3 DKB 18 X 18 N.GUARD

**DOOR #16 (NOT USED) CREW ROOM**

- 3 EA HINGE BB1279 4 1/2 X 4 1/2 US26D HAGER
- 1 EA LOCK ND105 RHO 626 SCHLAGE
- 1 EA VIEW FRAME LFR1A100 24 X 30 DKB N.GUARD
- 1 EA GLASS 23 X 29 X 1/4 CLEAR UMCO

**DOOR SCHEDULE**

MARK	DOOR	MATERIAL	SIZE	TYPE	FRAME	SIZE
1	ALUM.	3'-0"x7'-0"x1 3/4"	A	ALUM.	(NOTE 5)	
1A	ALUM.	3'-0"x7'-0"x1 3/4"	A	ALUM.	(NOTE 5)	
2	ALUM.	3'-0"x7'-0"x1 3/4"	A	ALUM.	(NOTE 5)	
3	H.M.	4'-0"x7'-0"x1 3/4"	B	H.M.	2"JAMB 6TH EXT. 4" HD INT.	
3A	H.M.	4'-0"x7'-0"x1 3/4"	C	H.M.	2"JAMB 6TH EXT. 4" HD INT.	
4	H.M.	3'-0"x7'-0"x1 3/4"	C	H.M.	2"JAMB 6TH EXT. 4" HD INT.	
5	S.C. WOOD W/ LAM.	3'-0"x6'-8"x1 3/4"	B	H.M.	2"JAMB & HEAD	
6	S.C. WOOD W/ LAM.	3'-0"x4'-8"x1 3/4"	D	H.M.	2"JAMB & HEAD	
6A	S.C. WOOD W/ LAM.	2'-6"x4'-8"x1 3/4"	D	H.M.	2"JAMB & HEAD	
7	S.C. WOOD W/ LAM.	3'-0"x6'-8"x1 3/4"	C	H.M.	2"JAMB & HEAD	
8	S.C. WOOD W/ LAM.	(2) 1'-2"x8'-0"x1 3/4"	C	H.M.	2"JAMB & HEAD	
8A	S.C. WOOD W/ LAM.	(2) 1'-2"x8'-0"x1 3/4"	E	H.M.	2"JAMB & HEAD	
9	INSULATED METAL	3'-0"x6'-6"x4"	C	N/A	N/A	
10	H.M.	3'-0"x7'-0"x1 3/4"	F	H.M.	2"JAMB & HEAD	
11		NOT USED				
12		NOT USED				
13		NOT USED				
14		NOT USED				
15	H.M.	3'-0"x7'-0"x1 3/4"	C	H.M.	2"JAMB 6TH EXT. 4" HD INT.	
16		NOT USED				

**GENERAL DOOR NOTES:**

- GO TO INSTALL ACCESSIBILITY DOOR SIGNS WHERE REQ'D BY LOCAL CODES - SEE GENERAL NOTE 6, SHEET A1.0
- DETEX ALARM CONTACT SWITCHES SHALL BE RECESSED INTO THE TOP OF THE DOOR & HOLLOW METAL FRAME ABOVE.
- DOORS, DOOR FRAMES, & HARDWARE FOR DOORS 3, 3A, 4, 5, 6, 6A, 7, 8, 8A, 10, 11, 12, 14, 15, 16 SUPPLIED BY: UNIVERSAL MANUFACTURING 1-800-821-1414.
- DOOR 9 SUPPLIED BY FREEZER/COOLER MANUFACTURER
- SEE ELEVATIONS AND WALL SECTIONS
- ALL INTERIOR SOLID CORE WOOD DOORS TO HAVE A LAMINATED FINISH, AS INDICATED PER DECOR DWGS
- DOOR 8 & 8A - LAMINATED FINISH - "WILSONART DOVE GREY" D92-60
- DOOR 3, 3A, 4 & 15 TO HAVE MAXIMUM U VALUE = 0.61

**DOOR TYPES**

**DOOR HARDWARE**

2022 STANDARD BUILDING - BB20  
45114-WOOD/WOOD

DESCRIPTION: WOOD BEARING WALLS W/HARDBOARD SIDING WOOD ROOF TRUSS FRAMING EPS/BATTEN/ACM PANEL/HARDBOARD SIDING

DATE ISSUED: 12-21-2022

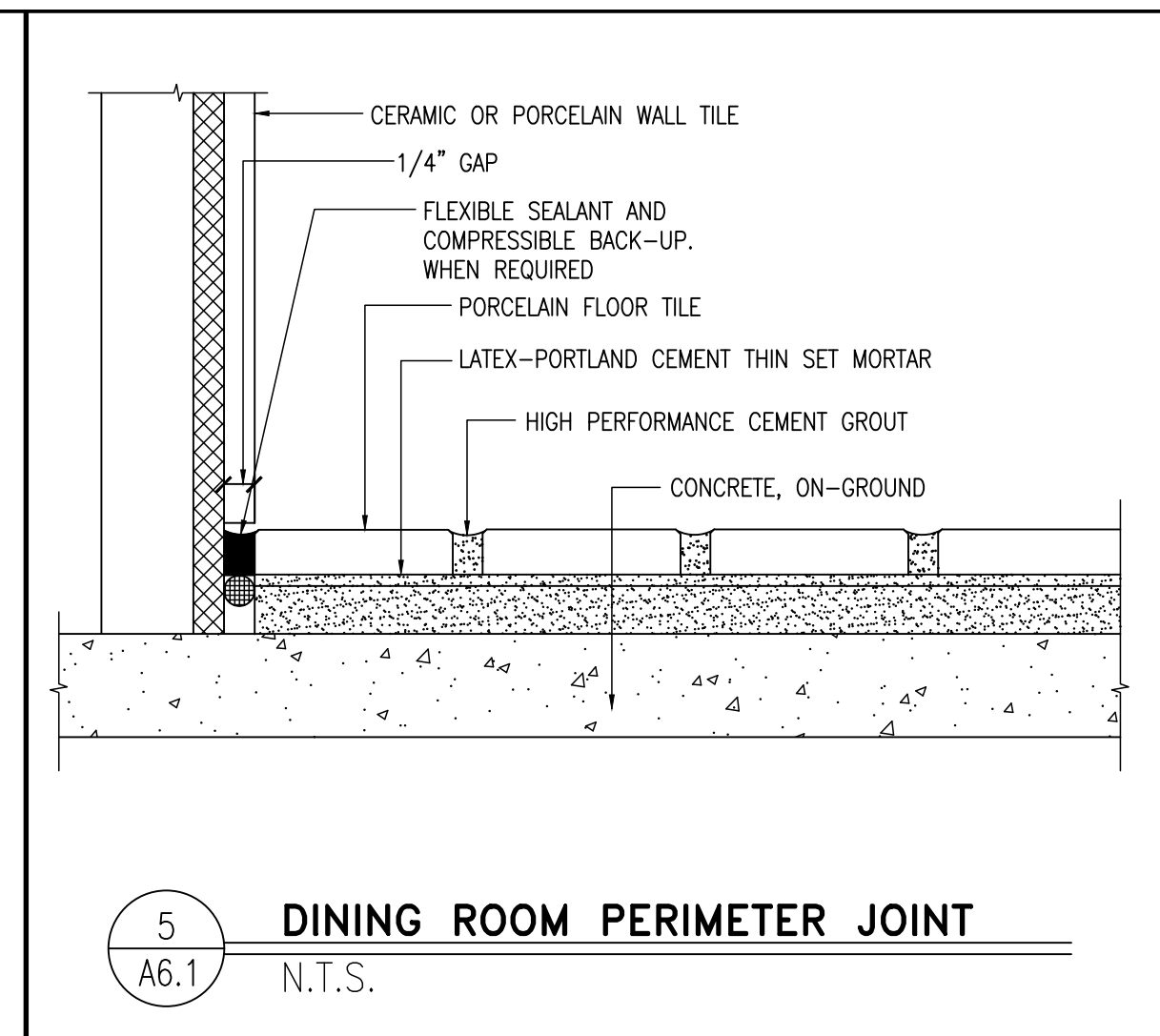
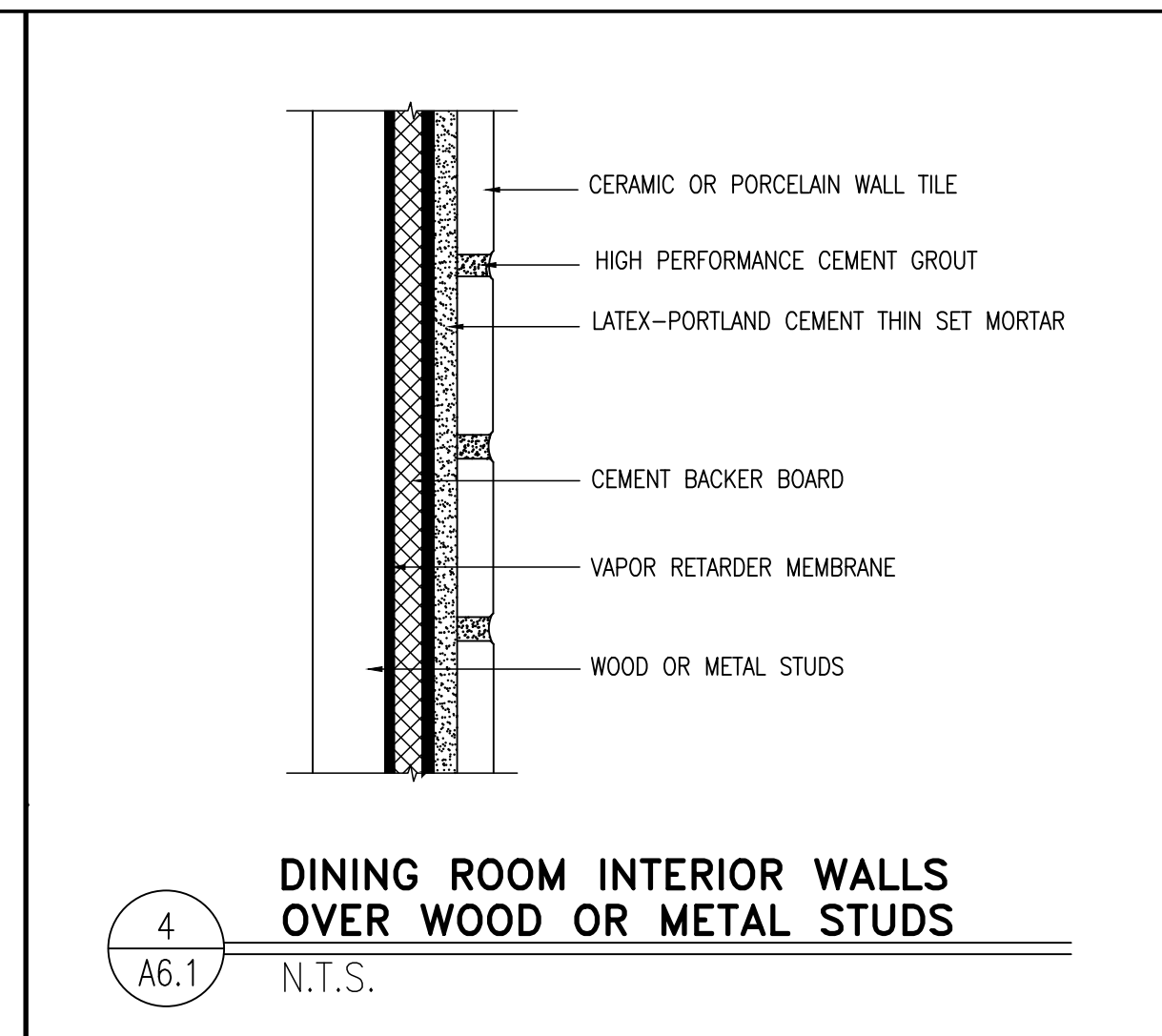
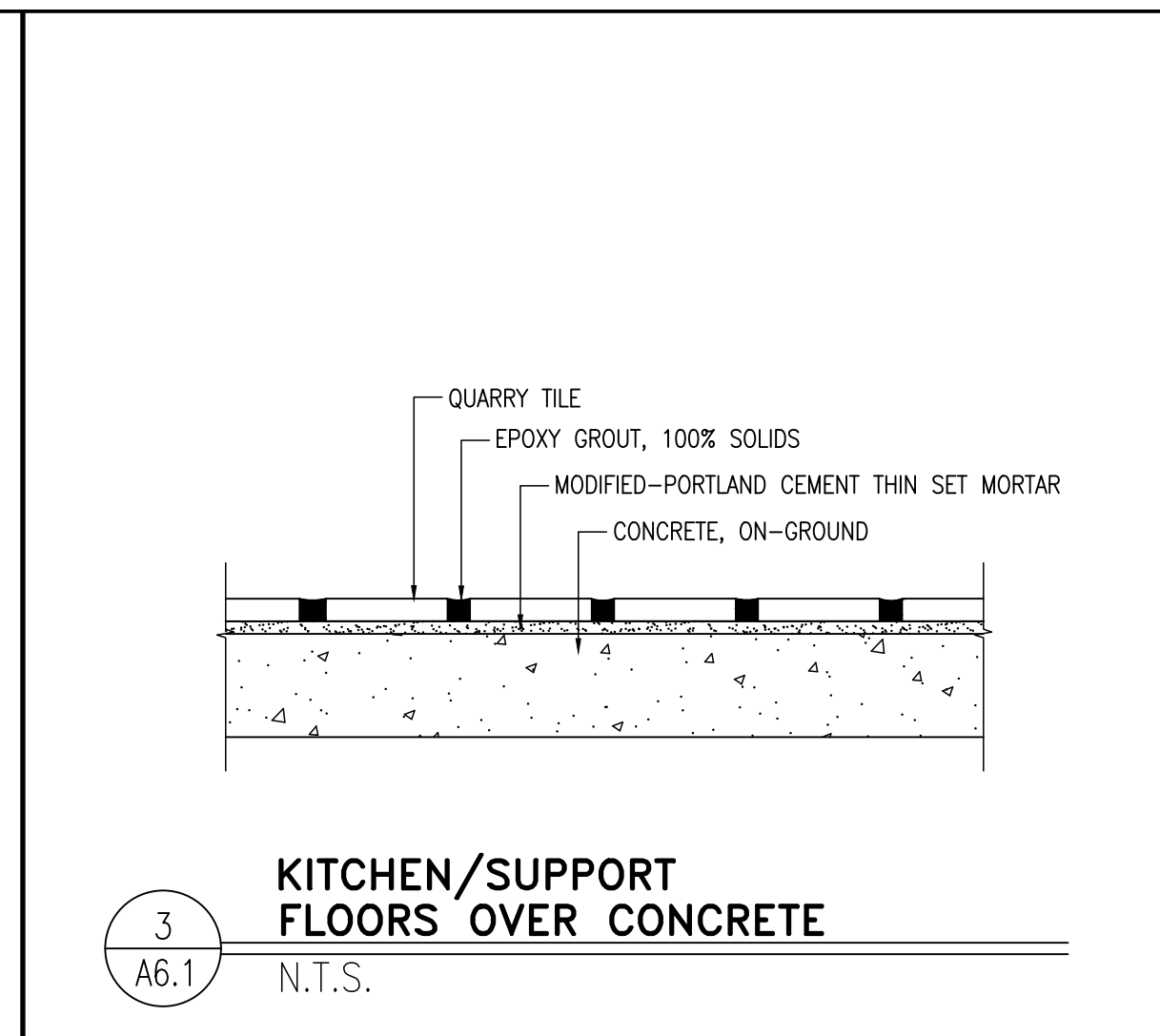
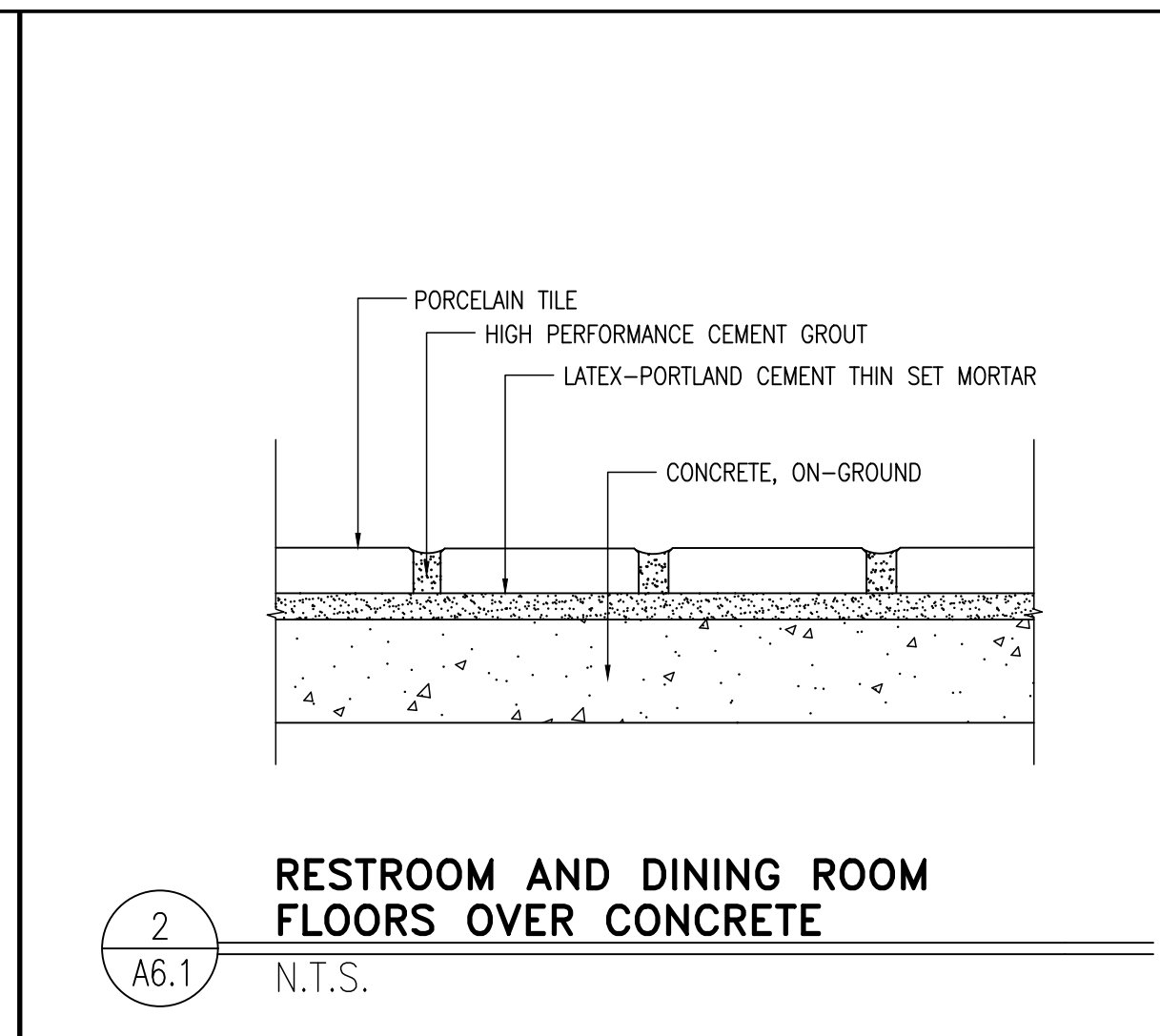
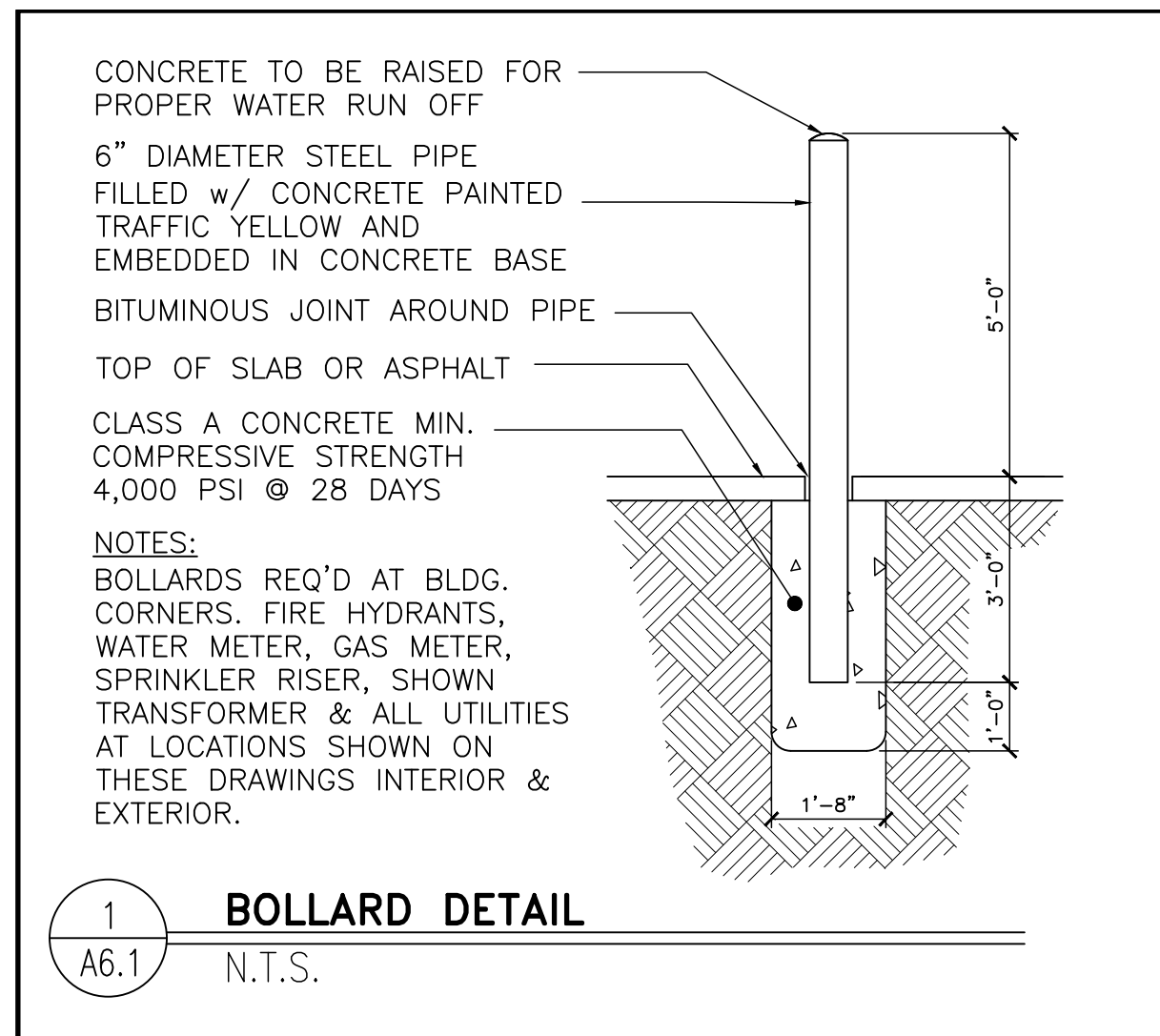
SALEM, MO

24-1289.0.0

**A6.0**  
DOOR & HARDWARE

STATE OF MISSOURI  
D. ROBERT KEMPLEK  
ARCHITECT  
1919  
PREPARED BY: Robert Kemples  
ARCHITECT  
3000 W. WILSON AVENUE  
ST. LOUIS, MO 63118  
PH: 314.241.1111  
FAX: 314.241.1111

DATE: \_\_\_\_\_  
REV: \_\_\_\_\_  
DESCRIPTION: \_\_\_\_\_



**WALL TILE SCHEDULE**

MARK	ROOM NAME	WALL	MORTAR SETTING BED	GROUT
100	CUSTOMER SERVICE	CERAMIC OR PORCELAIN WALL TILE (NOTE 4C)	LATEX-PORTLAND CEMENT THIN SET (MEDIUM BED)	HIGH PERFORMANCE CEMENT GROUT
101	DINING	CERAMIC OR PORCELAIN WALL TILE (NOTE 4B & 4C)	LATEX-PORTLAND CEMENT THIN SET (MEDIUM BED)	HIGH PERFORMANCE CEMENT GROUT
102	WOMEN'S TOILET	CERAMIC OR PORCELAIN WALL TILE (NOTE 4B)	LATEX-PORTLAND CEMENT THIN SET (MEDIUM BED)	HIGH PERFORMANCE CEMENT GROUT
103	MEN'S TOILET	CERAMIC OR PORCELAIN WALL TILE (NOTE 4B)	LATEX-PORTLAND CEMENT THIN SET (MEDIUM BED)	HIGH PERFORMANCE CEMENT GROUT
104	SUPPORT	N/A - SEE ROOM FINISH SCHEDULE	----	----
105	KITCHEN	N/A - SEE ROOM FINISH SCHEDULE	----	----
106	PRESENTER-1	CERAMIC WALL TILE	LATEX-PORTLAND CEMENT THIN SET (MEDIUM BED)	HIGH PERFORMANCE CEMENT GROUT
107	ORDER	N/A - SEE ROOM FINISH SCHEDULE	----	----
108	MANAGER'S OFFICE	N/A - SEE ROOM FINISH SCHEDULE	----	----
109	CREW ROOM	CERAMIC WALL TILE (NOTE 4B)	LATEX-PORTLAND CEMENT THIN SET (MEDIUM BED)	HIGH PERFORMANCE CEMENT GROUT
110	COOLER	N/A - SEE ROOM FINISH SCHEDULE	----	----
111	FREEZER	N/A - SEE ROOM FINISH SCHEDULE	----	----
112	COMPUTER CLOSET	N/A - SEE ROOM FINISH SCHEDULE	----	----
113	CREW ALCOVE	N/A - SEE ROOM FINISH SCHEDULE	----	----
114	JANITOR'S CLOSET	N/A - SEE ROOM FINISH SCHEDULE	----	----
115	VESTIBULE	CERAMIC WALL TILE	LATEX-PORTLAND CEMENT THIN SET (MEDIUM BED)	HIGH PERFORMANCE CEMENT GROUT
116	PRESENTER-2	CERAMIC WALL TILE	LATEX-PORTLAND CEMENT THIN SET (MEDIUM BED)	HIGH PERFORMANCE CEMENT GROUT
117	CO2	N/A - SEE ROOM FINISH SCHEDULE	----	----
118	NOT USED			
119	NOT USED			
120	NOT USED			
121	NOT USED			

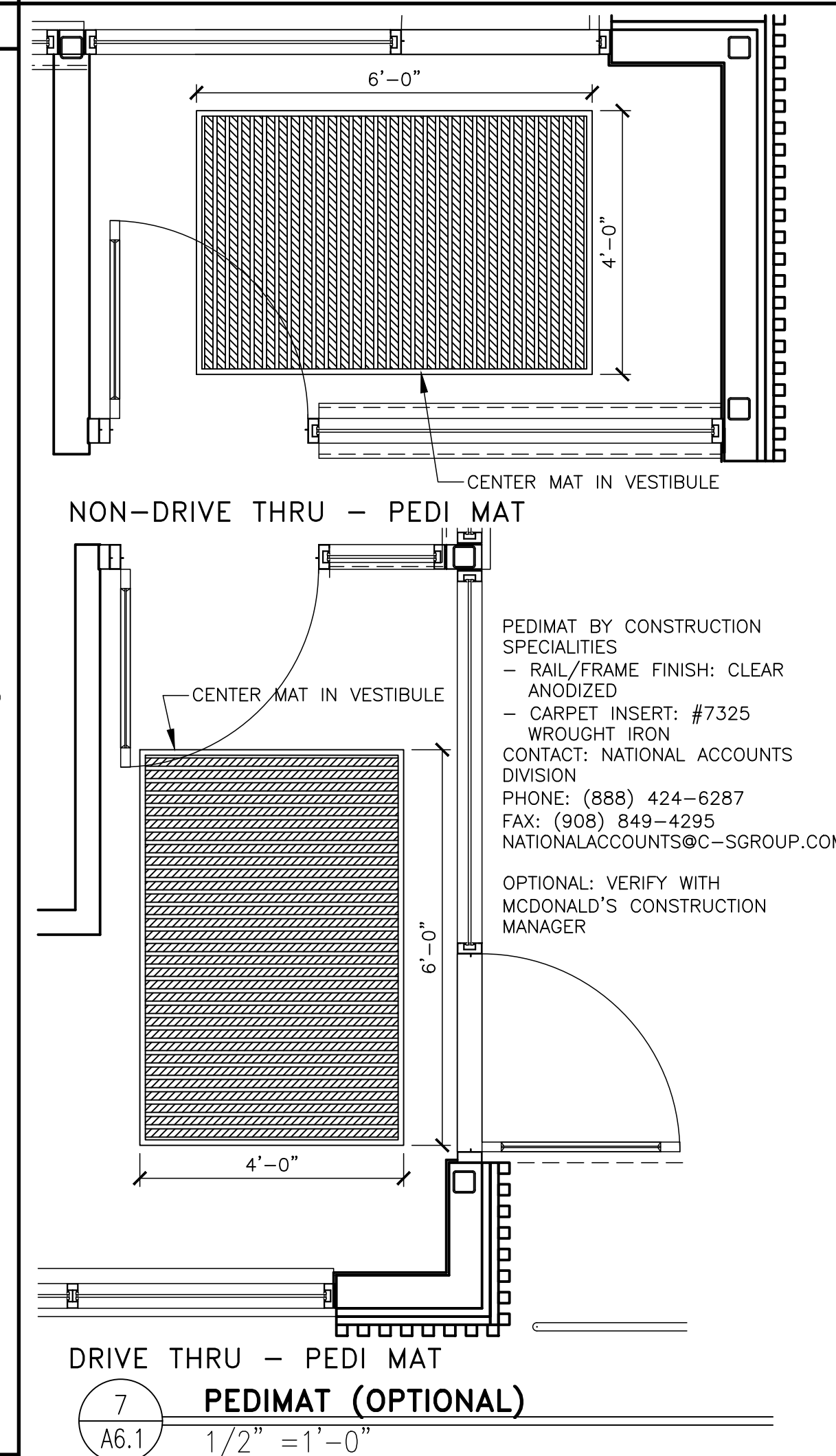
**FLOOR TILE SCHEDULE**

MARK	ROOM NAME	FLOOR	BASE	MORTAR SETTING BED	GROUT
100	CUSTOMER SERVICE	PORCELAIN FLOOR TILE (NOTE 3)	NONE - WALL TILE	LATEX-PORTLAND CEMENT THIN SET (MEDIUM BED)	HIGH PERFORMANCE CEMENT GROUT
101	DINING	PORCELAIN FLOOR TILE (NOTE 3)	NONE - WALL TILE	LATEX-PORTLAND CEMENT THIN SET (MEDIUM BED)	HIGH PERFORMANCE CEMENT GROUT
102	WOMEN'S TOILET	PORCELAIN FLOOR TILE (NOTE 3)	NONE - WALL TILE (NOTE 4A)	LATEX-PORTLAND CEMENT THIN SET (MEDIUM BED)	HIGH PERFORMANCE CEMENT GROUT
103	MEN'S TOILET	PORCELAIN FLOOR TILE (NOTE 3)	NONE - WALL TILE (NOTE 4A)	LATEX-PORTLAND CEMENT THIN SET (MEDIUM BED)	HIGH PERFORMANCE CEMENT GROUT
104	SUPPORT	QUARRY TILE (NOTE 2)	COVED QUARRY TILE	MODIFIED-PORTLAND CEMENT THIN SET MORTAR (MEDIUM BED)	CHEMICAL RESISTANT, WATER-CLEANABLE, TILE-SETTING EPOXY - 100% SOLIDS, INDUSTRIAL-GRADE
105	KITCHEN	QUARRY TILE (NOTE 2)	COVED QUARRY TILE	MODIFIED-PORTLAND CEMENT THIN SET MORTAR (MEDIUM BED)	CHEMICAL RESISTANT, WATER-CLEANABLE, TILE-SETTING EPOXY - 100% SOLIDS, INDUSTRIAL-GRADE
106	PRESENTER-1	QUARRY TILE (NOTE 2)	COVED QUARRY TILE	MODIFIED-PORTLAND CEMENT THIN SET MORTAR (MEDIUM BED)	CHEMICAL RESISTANT, WATER-CLEANABLE, TILE-SETTING EPOXY - 100% SOLIDS, INDUSTRIAL-GRADE
107	ORDER	QUARRY TILE (NOTE 2)	COVED QUARRY TILE	MODIFIED-PORTLAND CEMENT THIN SET MORTAR (MEDIUM BED)	CHEMICAL RESISTANT, WATER-CLEANABLE, TILE-SETTING EPOXY - 100% SOLIDS, INDUSTRIAL-GRADE
108	MANAGER'S OFFICE	QUARRY TILE (NOTE 2)	COVED QUARRY TILE	MODIFIED-PORTLAND CEMENT THIN SET MORTAR (MEDIUM BED)	CHEMICAL RESISTANT, WATER-CLEANABLE, TILE-SETTING EPOXY - 100% SOLIDS, INDUSTRIAL-GRADE
109	CREW ROOM	QUARRY TILE (NOTE 2)	COVED QUARRY TILE	MODIFIED-PORTLAND CEMENT THIN SET MORTAR (MEDIUM BED)	CHEMICAL RESISTANT, WATER-CLEANABLE, TILE-SETTING EPOXY - 100% SOLIDS, INDUSTRIAL-GRADE
110	COOLER	QUARRY TILE (NOTE 2)	4" ALUM. COVED BASE	MODIFIED-PORTLAND CEMENT THIN SET MORTAR (MEDIUM BED)	CHEMICAL RESISTANT, WATER-CLEANABLE, TILE-SETTING EPOXY - 100% SOLIDS, INDUSTRIAL-GRADE
111	FREEZER	QUARRY TILE (NOTE 2)	4" ALUM. COVED BASE	MODIFIED-PORTLAND CEMENT THIN SET MORTAR (MEDIUM BED)	CHEMICAL RESISTANT, WATER-CLEANABLE, TILE-SETTING EPOXY - 100% SOLIDS, INDUSTRIAL-GRADE
112	COMPUTER CLOSET	QUARRY TILE (NOTE 2)	COVED QUARRY TILE	MODIFIED-PORTLAND CEMENT THIN SET MORTAR (MEDIUM BED)	CHEMICAL RESISTANT, WATER-CLEANABLE, TILE-SETTING EPOXY - 100% SOLIDS, INDUSTRIAL-GRADE
113	CREW ALCOVE	QUARRY TILE (NOTE 2)	COVED QUARRY TILE	MODIFIED-PORTLAND CEMENT THIN SET MORTAR (MEDIUM BED)	CHEMICAL RESISTANT, WATER-CLEANABLE, TILE-SETTING EPOXY - 100% SOLIDS, INDUSTRIAL-GRADE
114	JANITOR'S CLOSET	PORCELAIN FLOOR TILE (NOTE 3)	COVED QUARRY TILE	LATEX-PORTLAND CEMENT THIN SET (MEDIUM BED)	HIGH PERFORMANCE CEMENT GROUT
115	VESTIBULE	PORCELAIN FLOOR TILE (NOTE 3)	NONE - WALL TILE	LATEX-PORTLAND CEMENT THIN SET (MEDIUM BED)	HIGH PERFORMANCE CEMENT GROUT
116	PRESENTER-2	QUARRY TILE (NOTE 2)	COVED QUARRY TILE	MODIFIED-PORTLAND CEMENT THIN SET MORTAR (MEDIUM BED)	CHEMICAL RESISTANT, WATER-CLEANABLE, TILE-SETTING EPOXY - 100% SOLIDS, INDUSTRIAL-GRADE
117	CO2	N/A - SEE ROOM FINISH SCHEDULE	----	----	----
118	NOT USED				
119	NOT USED				
120	NOT USED				
121	NOT USED				

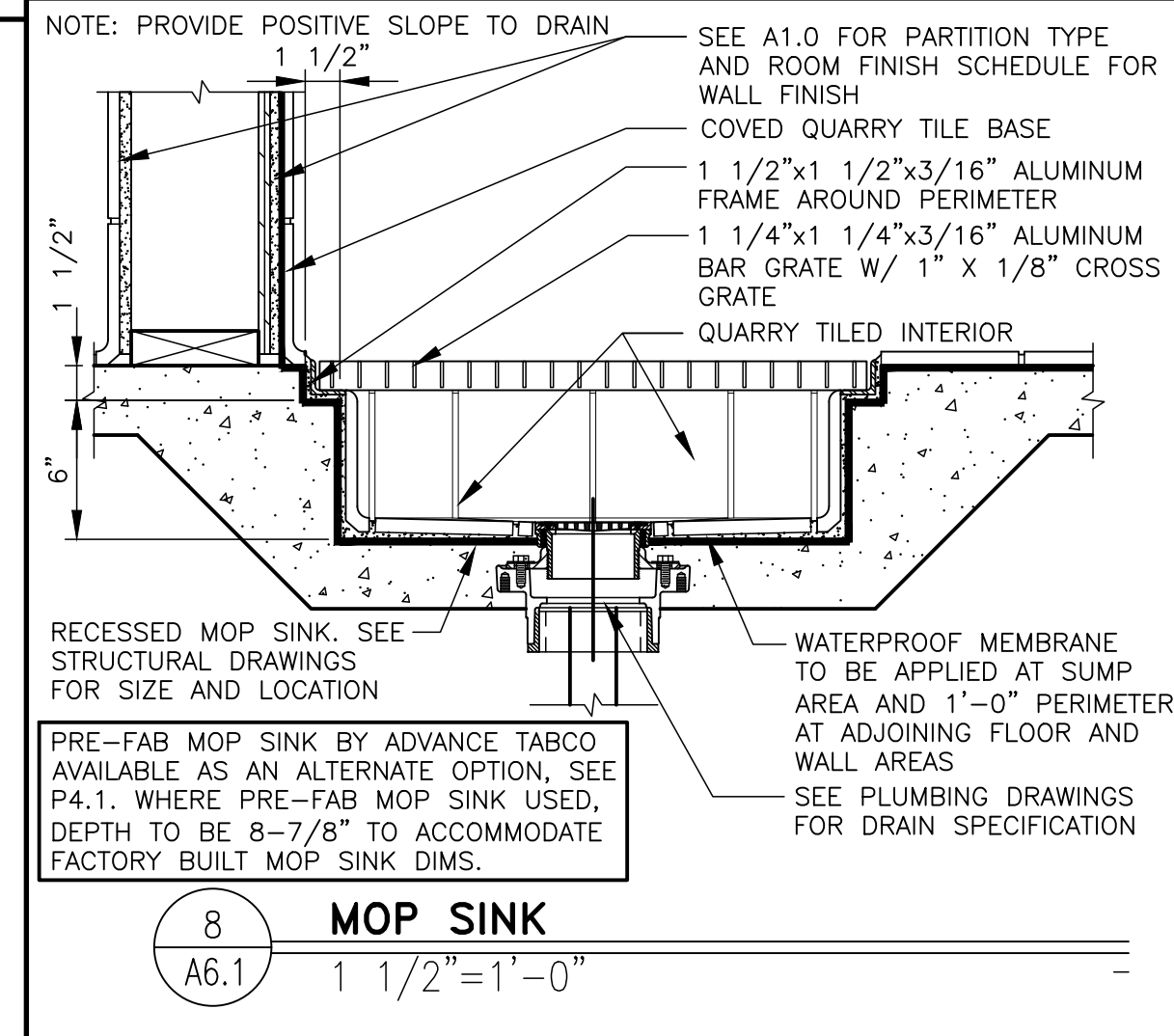
**ROOM FINISH SCHEDULE**

MARK	ROOM NAME	SUBSTRATE	FINISH	WALLS	CEILING *	REMARKS
100	CUSTOMER SERVICE	CEMENT BOARD	TILE	**	SEE DECOR DRAWINGS, TILE AS NOTED ON A1.0	2'x2' ACOUST., PAINTED GYP. BD
101	DINING	CEM BD/GYP BD	TILE/V.W.C.	**	SEE DECOR DRAWINGS FOR EXTENT	2'x2' ACOUST., PAINTED GYP. BD
102	WOMEN'S TOILET	CEMENT BOARD	TILE	**	SEE DECOR DRAWINGS FOR EXTENT	PAINTED GYP. BD.
103	MEN'S TOILET	CEMENT BOARD	TILE	**	SEE DECOR DRAWINGS FOR EXTENT	PAINTED GYP. BD.
104	SUPPORT	1/2" PLYWD (NOTE 4)	FRP	**	STAINLESS STEEL CORNERS	2'x2' VINYL-FACED LAY-IN
105	KITCHEN	1/2" PLYWD (NOTE 4)	FRP	**	STAINLESS STEEL CORNERS, TILE OVER CEM BD AS NOTED ON A1.0	2'x2' VINYL-FACED LAY-IN
106	PRESENTER -1	CEM BD, 1/2" PLYWD (NOTE 4)	TILE	**	TILE AS NOTED ON A1.0	2'x2' VINYL-FACED LAY-IN
107	ORDER	1/2" PLYWD (NOTE 4)	FRP	**		2'x2' VINYL-FACED LAY-IN
108	MANAGER'S AREA	1/2" PLYWD (NOTE 4)	FRP	**		2'x2' VINYL-FACED LAY-IN
109	CREW ROOM	CEM BD/GYP BD	TILE/V.W.C.	**	SEE DECOR DRAWINGS FOR EXTENT	2'x2' ACOUST. LAY-IN
110	COOLER	N/A	PRE-FAB METAL SKIN PANEL	**		PRE-FAB METAL SKIN PANEL
111	FREEZER	N/A	PRE-FAB METAL SKIN PANEL	**		PRE-FAB METAL SKIN PANEL
112	COMPUTER CLOSET	1/2" PLYWD (NOTE 4)	FRP	**		PAINTED GYP. BD.
113	CREW ALCOVE	1/2" PLYWD (NOTE 4)	FRP	**	STAINLESS STEEL CORNERS, TILE OVER CEM BD AS NOTED ON A1.0	2'x2' VINYL-FACED LAY-IN
114	JANITOR'S CLOSET	1/2" PLYWD (NOTE 4)	FRP	**		PAINTED GYP. BD.
115	VESTIBULE	CEM BD/GYP BD	TILE/V.W.C.	**	SEE DECOR DRAWINGS FOR EXTENT	2'x2' ACOUST. LAY-IN WITH HOLD DOWN CLIPS
116	PRESENTER -2	CEM BD, 1/2" PLYWD (NOTE 4)	TILE	**	TILE AS NOTED ON A1.0	2'x2' VINYL-FACED LAY-IN
117	CO2	1/2" PLYWD (NOTE 4)	FRP	**		PAINTED GYP. BD.
118	NOT USED					
119	NOT USED					
120	NOT USED					
121	NOT USED					

**GENERAL TILE NOTES:**  
1. REFERENCE: McDONALD'S PROJECT MANUAL - SECTION 093000  
2. **KITCHEN FLOOR TILE:**  
TILE: CROSSVILLE 6"x6" METROPOLITAN QUARRY BASICS ABRASIVE  
GROUT: CHARCOAL #47 BY MAPEI  
KERAPOXY IEG BLACK #10 BY MAPEI (FOR OPTIONAL GREY TILE)  
COLOR: PURITAN GRAY EXTRA ABRASIVE 57XA (STANDARD)  
MAYFLOWER RED 31XA (OPTIONAL) - VERIFY W/ MCDONALD'S ACM  
3. **DINING ROOM FLOOR TILE:**  
MAIN & ACCENT: USE ONLY APPROVED TILE SERIES AND COLORS BY CROSSVILLE AND EUROWEST. VERIFY COLOR AND PATTERN PER INTERIOR DECOR DRAWINGS.  
A) MUST BE PER McDONALD'S USA, LLC: STANDARDS FOR INTERIOR FLOOR TILE AND APPROVED TILE LIST.  
B) MUST MEET THE FOLLOWING:  
STATIC COEFFICIENT OF FRICTION (PER ASTM F1667-96)  
LEVEL SURFACES: MINIMUM 0.50 DRY AND WET (MCDONALD'S STANDARD)  
DYNAMIC COEFFICIENT OF FRICTION (PER ANSI A137.1 2012)  
LEVEL SURFACES: MINIMUM 0.5 DRY AND WET (MCDONALD'S STANDARD)  
4. **TILE TRANSITION AND EDGE PROTECTION:**  
A) TILE BASE (RESTROOM ONLY): SCHLUTER DILEX-AHK SERIES, BRUSHED STAINLESS STEEL.  
B) TILE EDGE PROTECTION (WALL TRANSITION): SCHLUTER-RONDEC-DB, SATIN ANODIZED ALUMINUM.  
C) TILE CORNER PROTECTION (OUTSIDE CORNER): SCHLUTER-RONDEC-AE, SATIN ANODIZED ALUMINUM.  
D) SEE INTERIOR DECOR DRAWINGS FOR ALL LOCATIONS.  
**BEFORE FINAL INSPECTION, REMOVE PROTECTIVE COVERINGS AND PERFORM FINAL CLEANING.**  
5. **TILE CLEANER:** DETERDEK, BY FILA SURFACE CARE PRODUCTS - NO SUBSTITUTIONS ALLOWED  
CAN BE ORDERED BY EUROWEST, CROSSVILLE, OR DIRECT FROM MANUFACTURER - FILA/DETEREK  
POST INSTALLATION CLEANING REQUIRED ON ALL FLOOR TILE INSTALLATIONS PRIOR TO RESTAURANT TURN OVER.  
APPLY CLEANER PER MANUFACTURER'S WRITTEN INSTRUCTIONS.  
REFERENCE: McDONALD'S PROJECT MANUAL - SECTION 09300 TILING INTERIOR.  
6. **GROUT COLOR AND MANUFACTURER AS INDICATED ON SHEET A1.0 AND INTERIOR DECOR DRAWINGS.**



**GENERAL FINISH NOTES:**  
1. ALL FINISH SURFACES OF WALL AND CEILING MATERIALS SHALL BE CLASS B AND SHALL HAVE A FLAME SPREAD RATING OF 26 TO 75 AND A SMOKE DENSITY OF 450 MAX. (PER IBC TABLE 803.9).  
2. DECORATIVE MATERIALS SHALL BE FLAME RETARDANT AND MEET THE CRITERIA OF NFPA 701.  
3. DECORATIVE MATERIAL SHALL NOT CONCEAL EXITS, EXIT LIGHTS, ALARM STATIONS, HOSE CABINETS, AND EXTINGUISHER LOCATIONS  
4. WHEN BUILDING TYPE IS A NON-COMBUSTIBLE CATEGORY, ALL PLYWOOD SHALL BE FIRE RETARDANT TREATED.  
5. A. FRP OVER CEMENT BD BEHIND 3-COMP SINK TO HGT OF BACK SPLASH  
B. TILE WAINSCOT TO 6" A.F.F. OVER CEMENT BD. OVER EXT GRADE PLYWOOD (NOTE 4) AT MOP SINKS  
6. PROVIDE CEMENT BOARD BACKER OR EQUIVALENT AT ALL TILE LOCATIONS.  
7. PROVIDE VAPOR BARRIER BEHIND PLYWOOD AT WALLS AND BEHIND GYP. AT CEILING  
\* SEE CEILING PLAN FOR HEIGHTS & LAYOUTS  
\*\* WVC ON EXTERIOR WALL ASSEMBLIES TO BE PERFORATED



STATE OF MISSOURI ARCHITECTS  
D. ROBERT KEMPLEK  
19-01-2022

PREPARED BY: Robert Kemples  
ARCHITECT  
3100 WILSON BLVD. STE. 100  
ST. LOUIS, MO 63103  
TEL: 314.433.8800  
FAX: 314.433.8801

© 2021 McDonald's USA, LLC  
**McDonald's USA, LLC**  
These drawings and specifications are the confidential and proprietary property of McDonald's USA, LLC and shall not be copied or reproduced without written authorization. The contract documents were prepared in accordance with the specifications and drawings of McDonald's USA, LLC and are not suitable for use on a different site or at a later time. Use of these drawings for reference or example on another project requires the written consent of McDonald's USA, LLC. The contract documents for the project are the contract documents for the project and are not to be used for any other project without the written consent of McDonald's USA, LLC.

PREPARED FOR: McDonald's USA, LLC  
DRAWN BY: SO  
STD ISSUE DATE: 2022\_08  
REVIEWED BY: R.K.  
DATE ISSUED: 12-21-2022  
SITE ADDRESS: SALEM, MO  
1000 S Main Street  
024-1289

TITLE: 2022 STANDARD BUILDING - BB20  
DESCRIPTION: 45114-WOOD/WOOD  
WOOD ROOF TRUSS FRAMING  
WFS/BATTEN/ADM PANEL/HARDBOARD SIDING

24-1289.00.0  
**A6.1**  
FINISH SCHEDULES