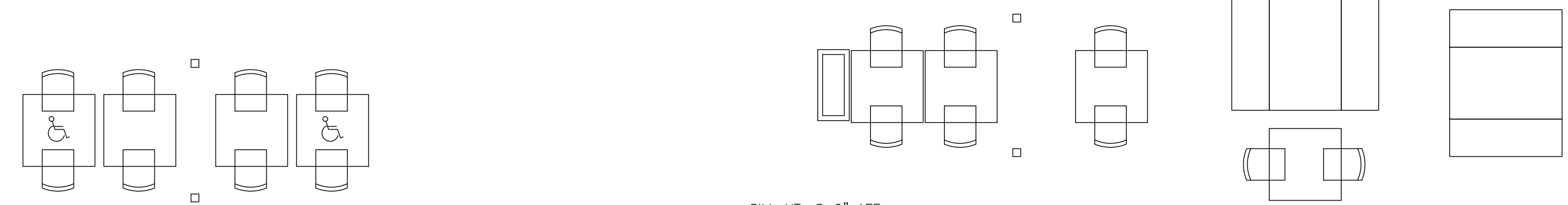
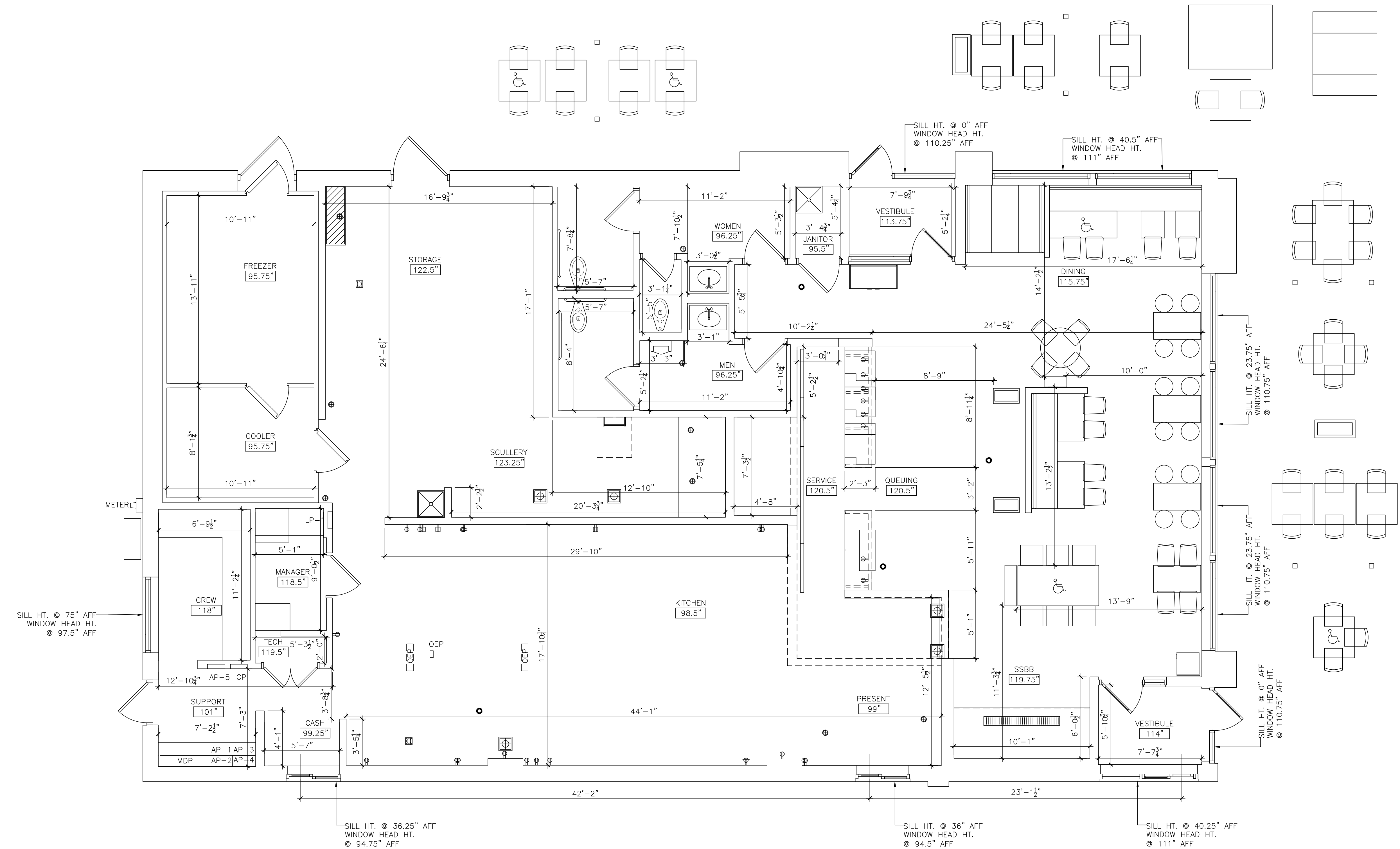


W:\Shared\Clients\McDonalds\Survey and PZP\Market\_Heartland\024-1216 (35899) BKST\024-1216 (35899) CAD\Complete\35899 As-Built\_CAD.dwg August 28, 2019 - 11:00am GorzKarlina

SAFETY - INTEGRITY - SUSTAINABILITY



**1** EXISTING FLOOR PLAN - LEVEL 1  
A1.0 SCALE: 1/4" = 1'-0"  
TOTAL SQ FT = 3,683  
TOTAL SEATING = 48

REVISIONS	
NO.	DESCRIPTION

SEAL

SEAL NOTE

PREPARED FOR  
**McDonald's USA LLC**

These drawings and specifications are the confidential and proprietary property of McDonald's USA, LLC and shall not be copied or reproduced without written authorization. The contract documents were prepared for use on this specific site in conjunction with its issue date and are not suitable for use on a different site or at a later time. Use of these drawings for reference or example on another project requires the services of properly licensed architects and engineers. Reproduction of the contract documents for reuse on another project is not authorized.

PROJECT DESCRIPTION  
**EXISTING CONDITIONS**

PROJECT LOCATION  
**McDonald's  
1200 EMANUEL  
CLEAVER II BLVD  
KCMO, MO 64110**

SHEET TITLE  
**FLOOR PLAN**

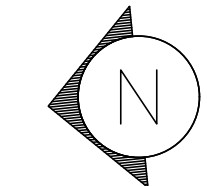
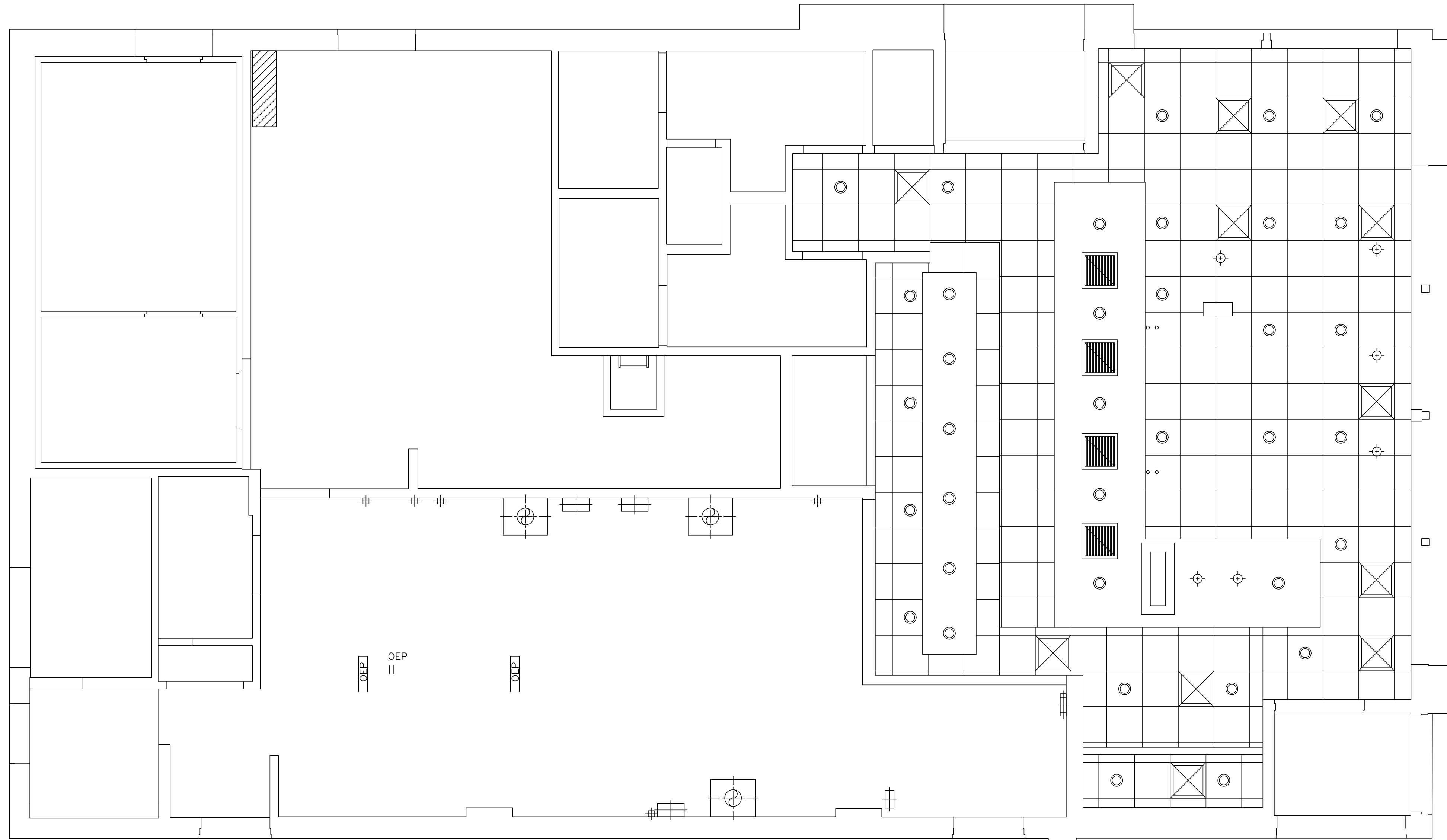
SHEET MANAGEMENT  
PROJECT NO.: 024-1216  
DATE ISSUED: 08/16/2019  
DRAWN BY: JE  
REVIEWED BY: JC

NATIONAL STORE #  
**35899**

SHEET NUMBER  
**A1.0**  
EX. FLOOR PLAN

Submital Type - AS-BUILT

W:\Shared\Clients\McDonalds\Survey and PZP\Market\_Heartland\024-1216 (35899) BKST\024-1216 (35899) CAD\Complete\35899 As Built CAD.dwg August 28, 2019 - 11:00am GorzKorolna



1 EXISTING REFLECTED CEILING PLAN  
A1.1 SCALE: 1/4" = 1'-0"

**sevan**  
MULTI-SITE SOLUTIONS  
DESIGN LLC.

Regional Office:  
3704 Hills Tech Drive  
Farmington Hills, MI 48331  
Telephone: 734-307-4445  
Corporate Office:  
4925 Forest Avenue  
Downers Grove, IL 60515  
info@sevansolutions.com www.sevansolutions.com

SAFETY - INTEGRITY - SUSTAINABILITY

REVISIONS		
NO.	DATE	DESCRIPTION
-	-	-
-	-	-
-	-	-
-	-	-
-	-	-
-	-	-
-	-	-
-	-	-
-	-	-

SEAL

SEAL NOTE

PREPARED FOR  
**McDonald's USA LLC**

These drawings and specifications are the confidential and proprietary property of McDonald's USA, LLC and shall not be copied or reproduced without written authorization. The contract documents were prepared for use on this specific site in conjunction with its issue date and are not suitable for use on a different site or at a later time. Use of these drawings for reference or example on another project requires the services of properly licensed architects and engineers. Reproduction of the contract documents for reuse on another project is not authorized.

PROJECT DESCRIPTION  
**EXISTING CONDITIONS**

PROJECT LOCATION  
**McDonald's  
1200 EMANUEL  
CLEAVER II BLVD  
KCMO, MO 64110**

SHEET TITLE  
**REFLECTED  
CEILING  
PLAN**

SHEET MANAGEMENT  
PROJECT NO.: 024-1216  
DATE ISSUED: 08/16/2019  
DRAWN BY: JE  
REVIEWED BY: JC

NATIONAL STORE #  
**35899**

SHEET NUMBER  
**A1.1**  
EX. RCP

Submital Type - AS-BUILT

REVISIONS

NO.	DATE	DESCRIPTION
-	-	-
-	-	-
-	-	-
-	-	-
-	-	-
-	-	-
-	-	-
-	-	-
-	-	-
-	-	-

SEAL

SEAL NOTE

PREPARED FOR  
**McDonald's USA LLC**

These drawings and specifications are the confidential and proprietary property of McDonald's USA, LLC and shall not be copied or reproduced without written authorization. The contract documents were prepared for use on this specific site in conjunction with its issue date and are not suitable for use on a different site or at a later time. Use of these drawings for reference or example on another project requires the services of properly licensed architects and engineers. Reproduction of the contract documents for reuse on another project is not authorized.

PROJECT DESCRIPTION  
**EXISTING CONDITIONS**

PROJECT LOCATION  
**McDonald's  
1200 EMANUEL  
CLEAVER II BLVD  
KCMO, MO 64110**

SHEET TITLE  
**KITCHEN  
EQUIPMENT PLAN**

SHEET MANAGEMENT  
PROJECT NO.: 024-1216  
DATE ISSUED: 08/16/2019  
DRAWN BY: JE  
REVIEWED BY: JC

NATIONAL STORE #  
**35899**

SHEET NUMBER  
**K1.0**  
EX. EQUIPMENT PLAN

