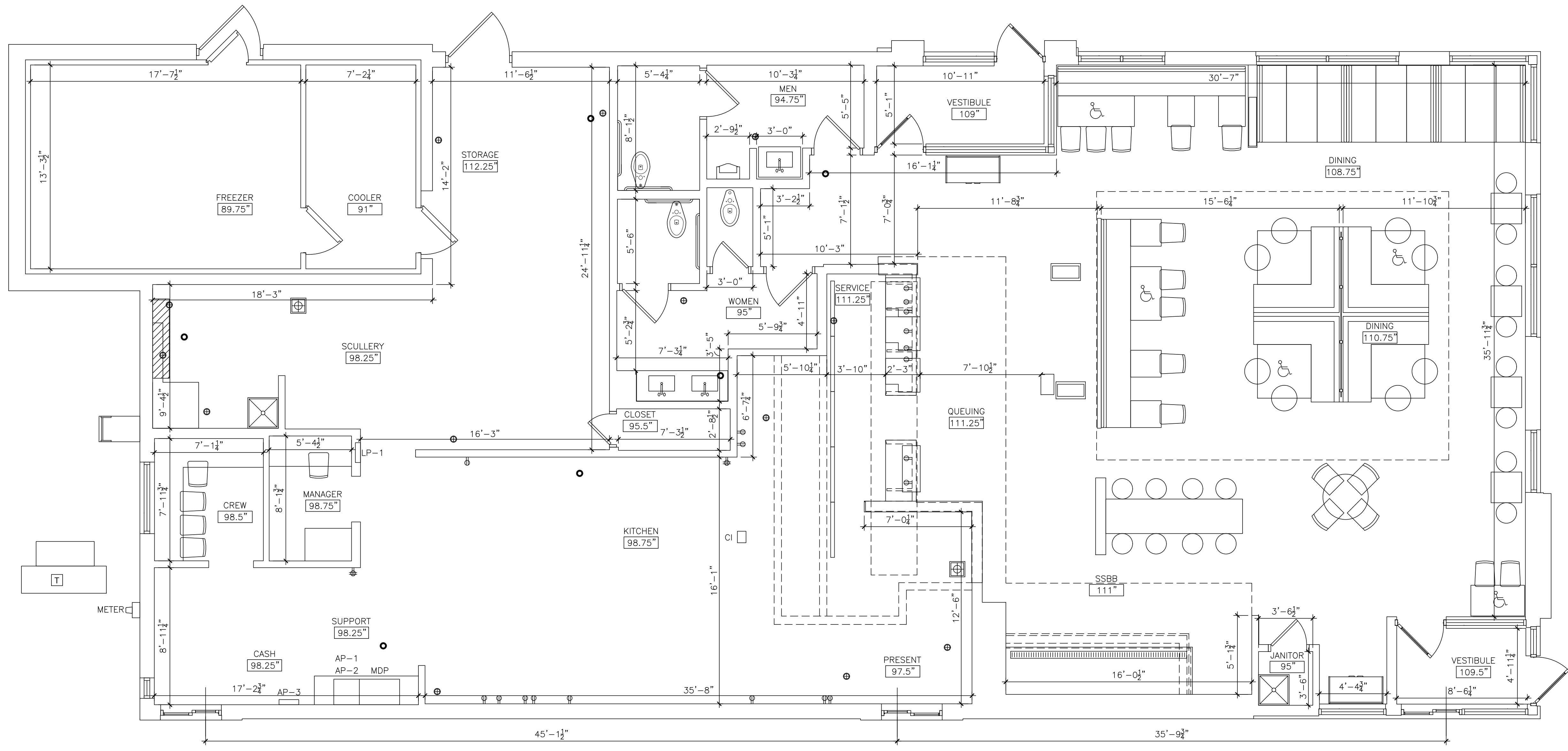
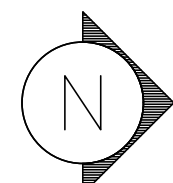


Z:\Shared\Clients\McDonalds\Survey and P2P\Market_Heartland\024-1031 (25248) BKST\024-1031 (25248) CAD\Complete\25248 As Built CAD BKST.dwg September 24, 2019 - 3:05pm \$(GETVAR,??)




1 EXISTING FLOOR PLAN - LEVEL 1
A1.0 SCALE: 1/4" = 1'-0"
 TOTAL SQ FT = 4,136
 TOTAL SEATING = 84

sevan
MULTI-SITE SOLUTIONS
DESIGN LLC.

Regional Office:
37704 Hills Tech Drive
Farmington Hills, MI 48331
Telephone: 734-307-4445

Corporate Office:
4925 Forest Avenue
Downers Grove, IL 60515
info@sevensolutions.com www.sevensolutions.com

SAFETY - INTEGRITY - SUSTAINABILITY

REVISIONS		
NO.	DATE	DESCRIPTION

SEAL

SEAL NOTE

PREPARED FOR
McDonald's USA LLC

These drawings and specifications are the confidential and proprietary property of McDonald's USA, LLC and shall not be copied or reproduced without written authorization. The contract documents were prepared for use on this specific site in conjunction with its issue date and are not suitable for use on a different site or at a later time. Use of these drawings for reference or example on another project requires the services of properly licensed architects and engineers. Reproduction of the contract documents for reuse on another project is not authorized.

PROJECT DESCRIPTION
EXISTING CONDITIONS

PROJECT LOCATION
**McDonald's
13301 STATE LINE RD
KANSAS CITY, KS
64145**

SHEET TITLE
FLOOR PLAN

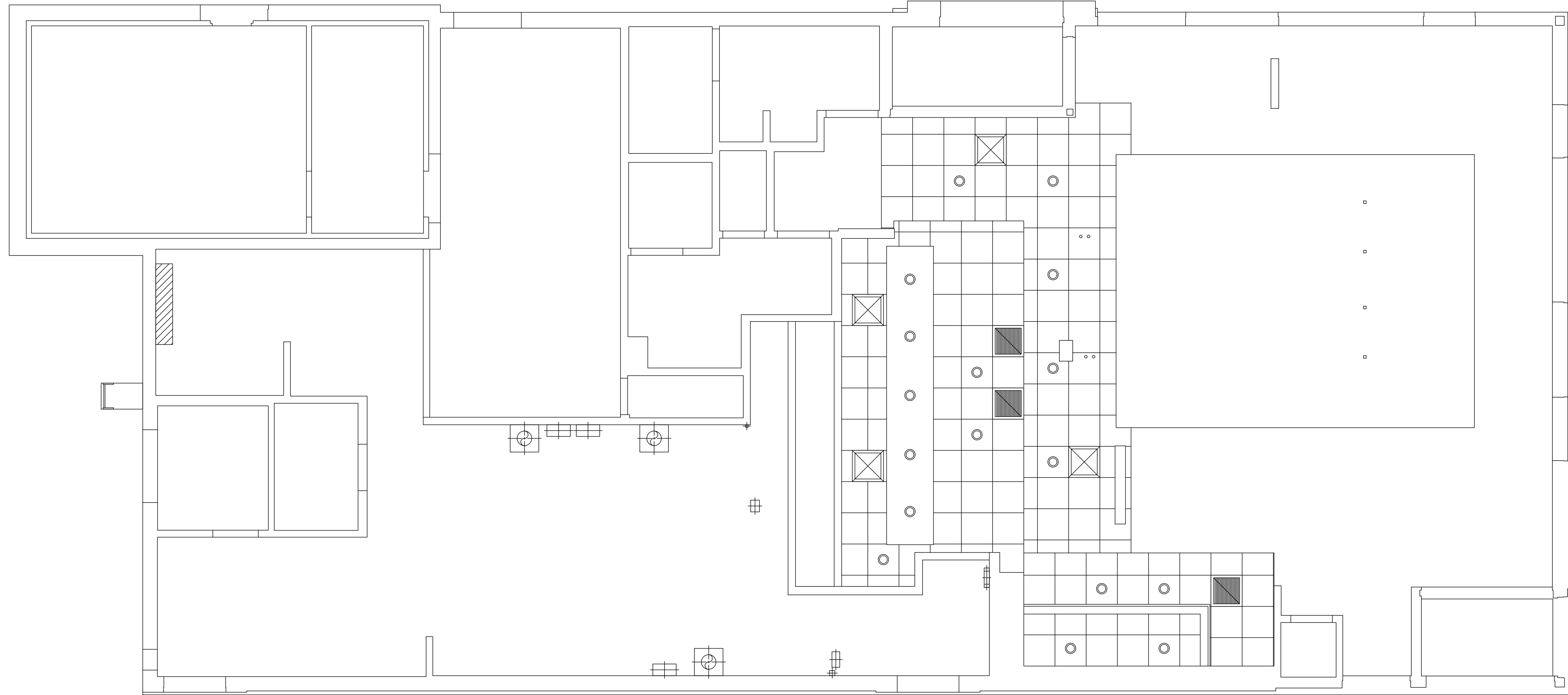
SHEET MANAGEMENT
PROJECT NO.: 024-1031
DATE ISSUED: 09/24/2019
DRAWN BY: AM
REVIEWED BY: TF

NATIONAL STORE #
25248

SHEET NUMBER
A1.0
EX. FLOOR PLAN

Submittal Type - AS-BUILT

Z:\Shared\Clients\McDonalds\Survey and P2P\Market_Heartland\024-1031 (25248) BKST\024-1031 (25248) CAD\Complete\25248 As Built CAD BKST.dwg September 24, 2019 - 3:05pm \$(GETVAR,??)



1 EXISTING REFLECTED CEILING PLAN
 A1.1 SCALE: 1/4" = 1'-0"

sevan
 MULTI-SITE SOLUTIONS
 DESIGN LLC.

Regional Office:
 37704 Hills Tech Drive
 Farmington Hills, MI 48331
 Telephone: 734-307-4462

Corporate Office:
 4925 Forest Avenue
 Downers Grove, IL 60515
 info@sevansolutions.com www.sevansolutions.com

SAFETY - INTEGRITY - SUSTAINABILITY

REVISIONS

NO.	DATE	DESCRIPTION
-	-	-
-	-	-
-	-	-
-	-	-
-	-	-
-	-	-
-	-	-

SEAL

SEAL NOTE

PREPARED FOR
McDonald's USA LLC

These drawings and specifications are the confidential and proprietary property of McDonald's USA, LLC and shall not be copied or reproduced without written authorization. The contract documents were prepared for use on this specific site in conjunction with its issue date and are not suitable for use on a different site or at a later time. Use of these drawings for reference or example on another project requires the services of properly licensed architects and engineers. Reproduction of the contract documents for reuse on another project is not authorized.

PROJECT DESCRIPTION
EXISTING CONDITIONS

PROJECT LOCATION
**McDonald's
 13301 STATE LINE RD
 KANSAS CITY, KS
 64145**

SHEET TITLE
**REFLECTED
 CEILING
 PLAN**

SHEET MANAGEMENT
 PROJECT NO.: 024-1031
 DATE ISSUED: 09/24/2019
 DRAWN BY: AM
 REVIEWED BY: TF

NATIONAL STORE #
25248

SHEET NUMBER
A1.1
 EX. RCP

Submittal Type - AS-BUILT

REVISIONS	
NO.	DESCRIPTION

SEAL

SEAL NOTE

PREPARED FOR
McDonald's USA LLC

These drawings and specifications are the confidential and proprietary property of McDonald's USA, LLC and shall not be copied or reproduced without written authorization. The contract documents were prepared for use on this specific site in conjunction with its issue date and are not suitable for use on a different site or at a later time. Use of these drawings for reference or example on another project requires the services of properly licensed architects and engineers. Reproduction of the contract documents for reuse on another project is not authorized.

PROJECT DESCRIPTION
EXISTING CONDITIONS

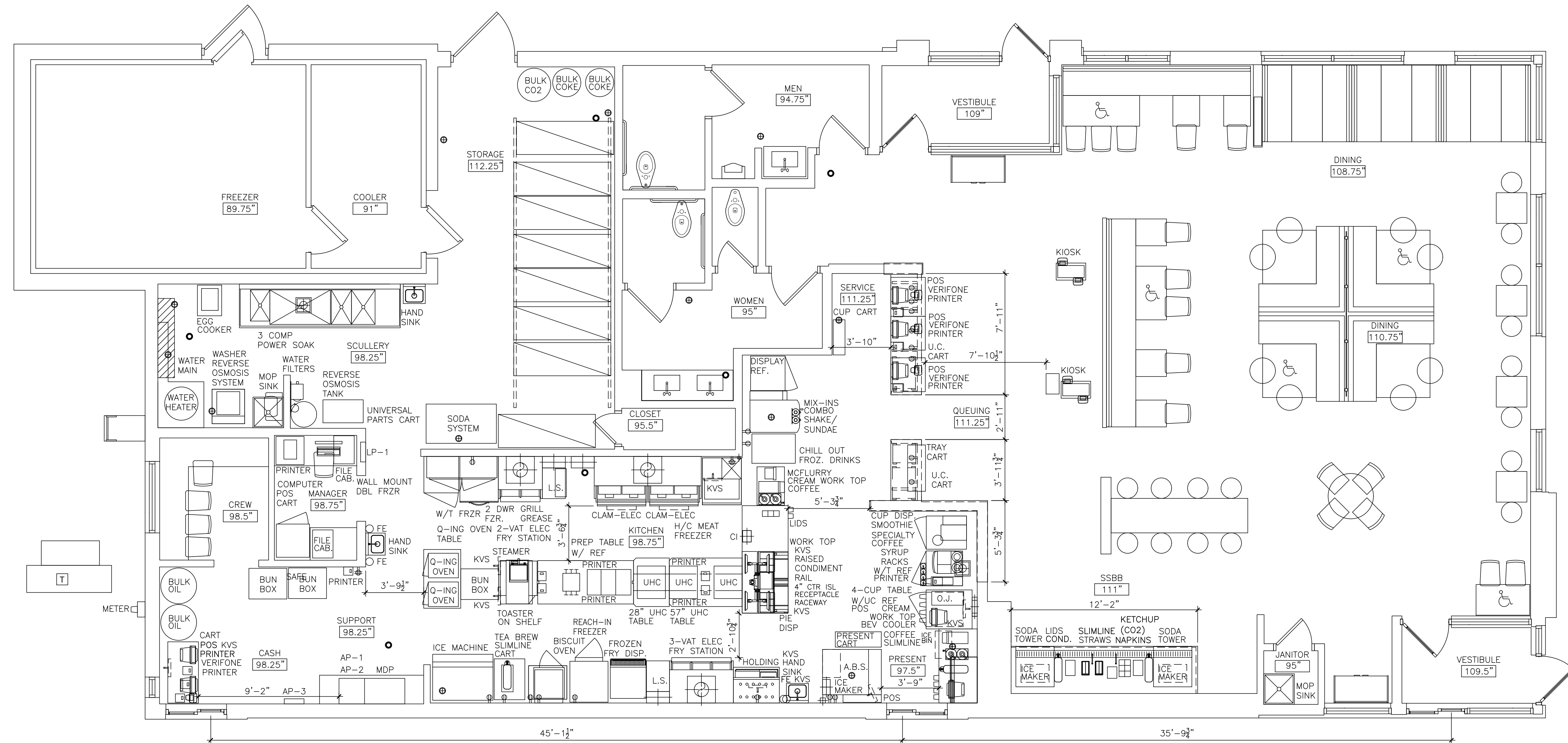
PROJECT LOCATION
McDonald's
13301 STATE LINE RD
KANSAS CITY, KS
64145

SHEET TITLE
KITCHEN
EQUIPMENT PLAN

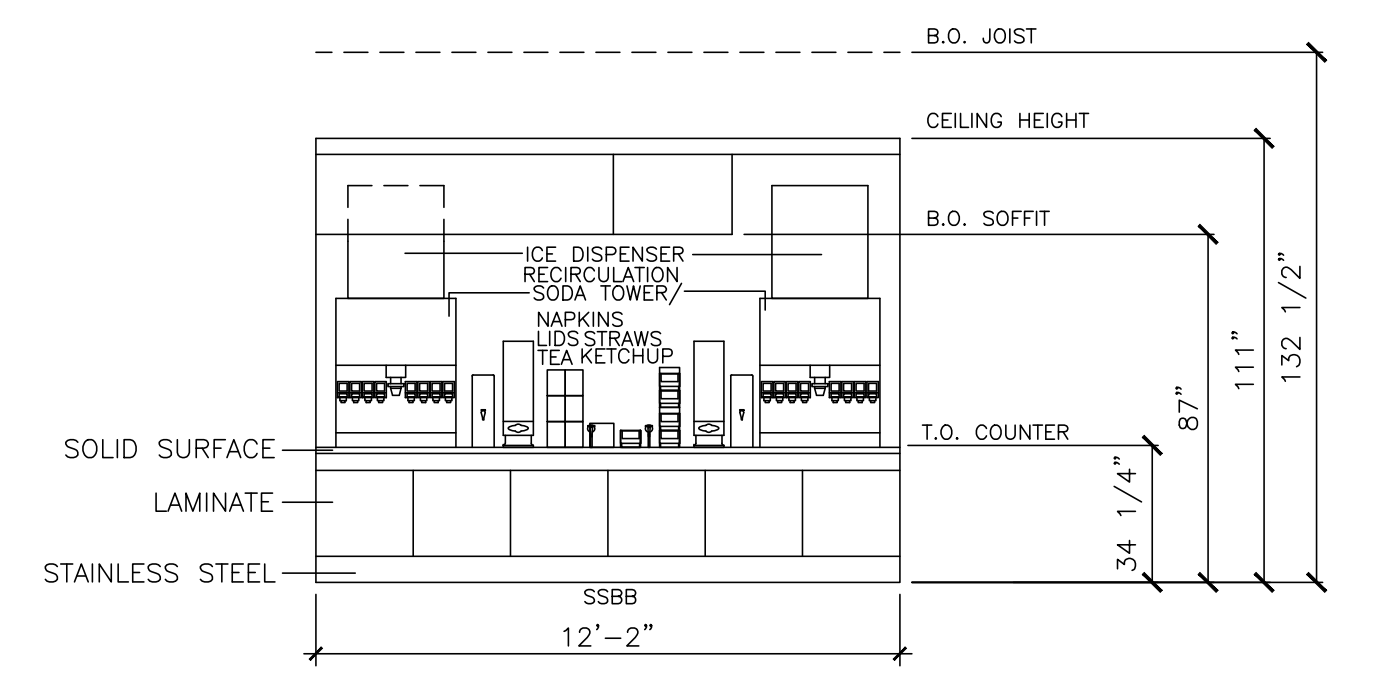
SHEET MANAGEMENT
PROJECT NO.: 024-1031
DATE ISSUED: 09/24/2019
DRAWN BY: AM
REVIEWED BY: TF

NATIONAL STORE #
25248

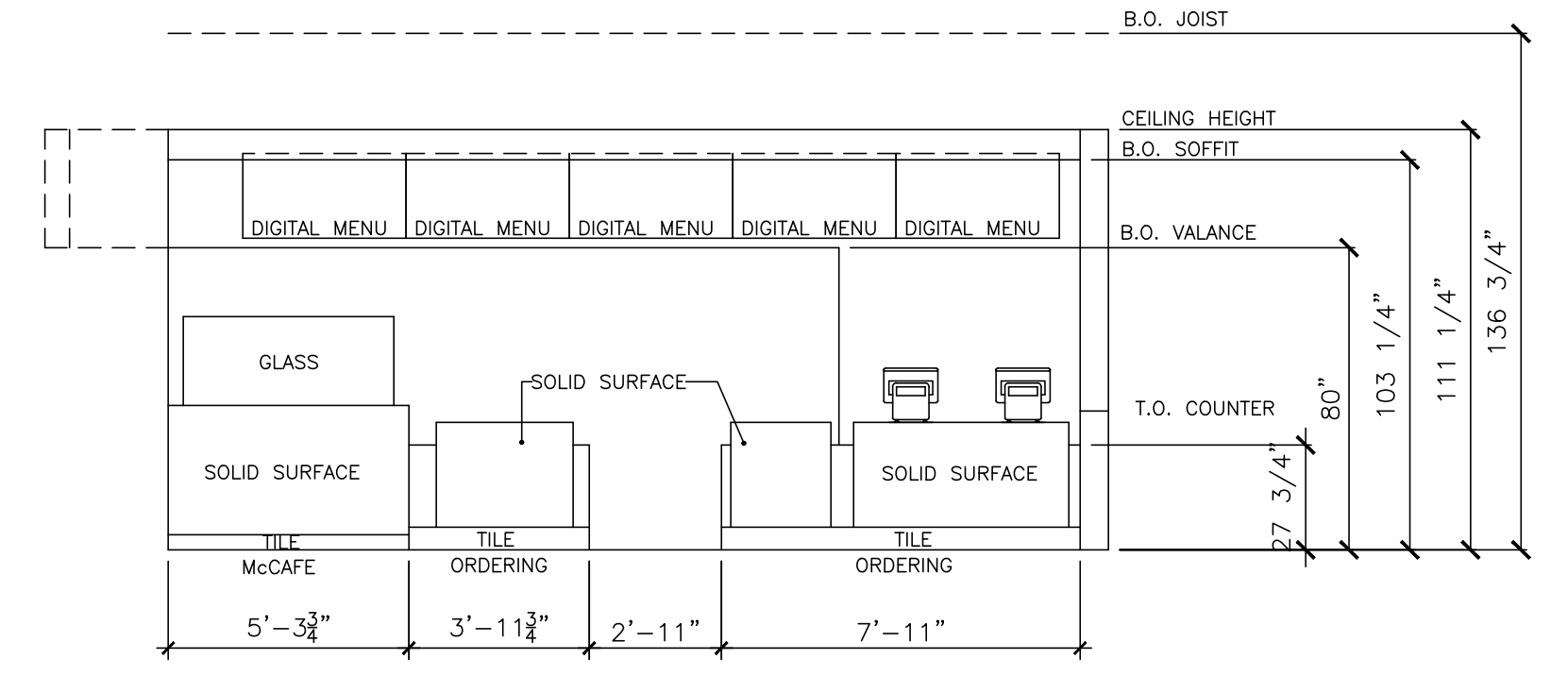
SHEET NUMBER
K1.0
EX. EQUIPMENT PLAN



1 EXISTING EQUIPMENT PLAN
SCALE: 1/4" = 1'-0"



2 EXISTING SSB COUNTER ELEVATION
SCALE: 1/4" = 1'-0"



3 EXISTING FRONT COUNTER ELEVATION
SCALE: 1/4" = 1'-0"