

C:\Users\AsechabNoji\Desktop\015-0195 (13539) BKST\015-0195 (13539) As Built CAD BKST.dwg August 22, 2019 - 1:33pm AsechabNoji

SAFETY - INTEGRITY - SUSTAINABILITY

REVISIONS

NO.	DATE	DESCRIPTION
-	-	-
-	-	-
-	-	-
-	-	-
-	-	-
-	-	-
-	-	-
-	-	-
-	-	-
-	-	-

SEAL

SEAL NOTE

PREPARED FOR
McDonald's USA LLC

These drawings and specifications are the confidential and proprietary property of McDonald's USA, LLC and shall not be copied or reproduced without written authorization. The contract documents were prepared for use on this specific site in conjunction with its issue date and are not suitable for use on a different site or at a later time. Use of these drawings for reference or example on another project requires the services of properly licensed architects and engineers. Reproduction of the contract documents for reuse on another project is not authorized.

PROJECT DESCRIPTION
EXISTING CONDITIONS

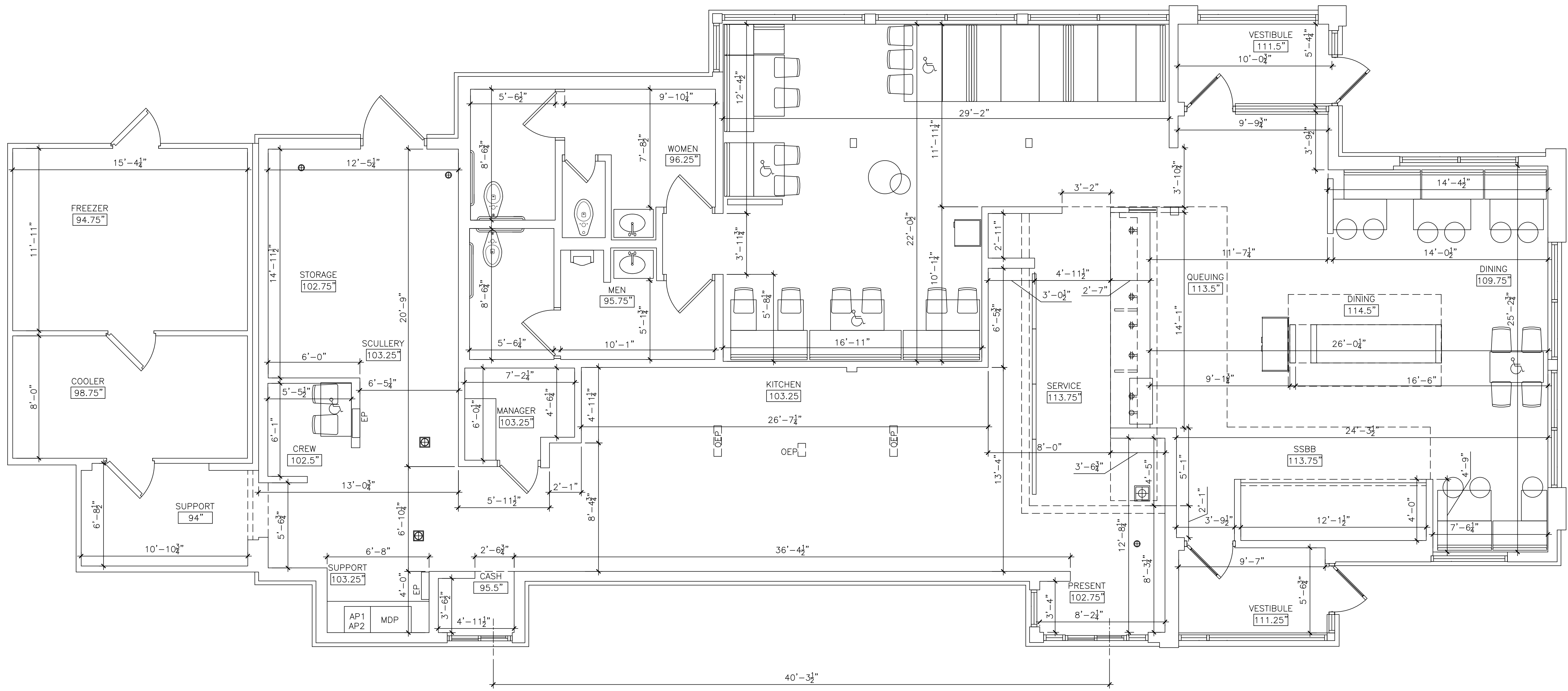
PROJECT LOCATION
**McDonald's
1001 S 1ST ST
HIAWATHA, KS 66434**

SHEET TITLE
FLOOR PLAN

SHEET MANAGEMENT
PROJECT NO.: 015-0195
DATE ISSUED: 08/22/2019
DRAWN BY: NS
REVIEWED BY: JA

NATIONAL STORE #
13539

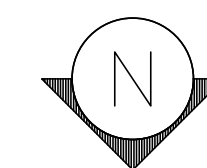
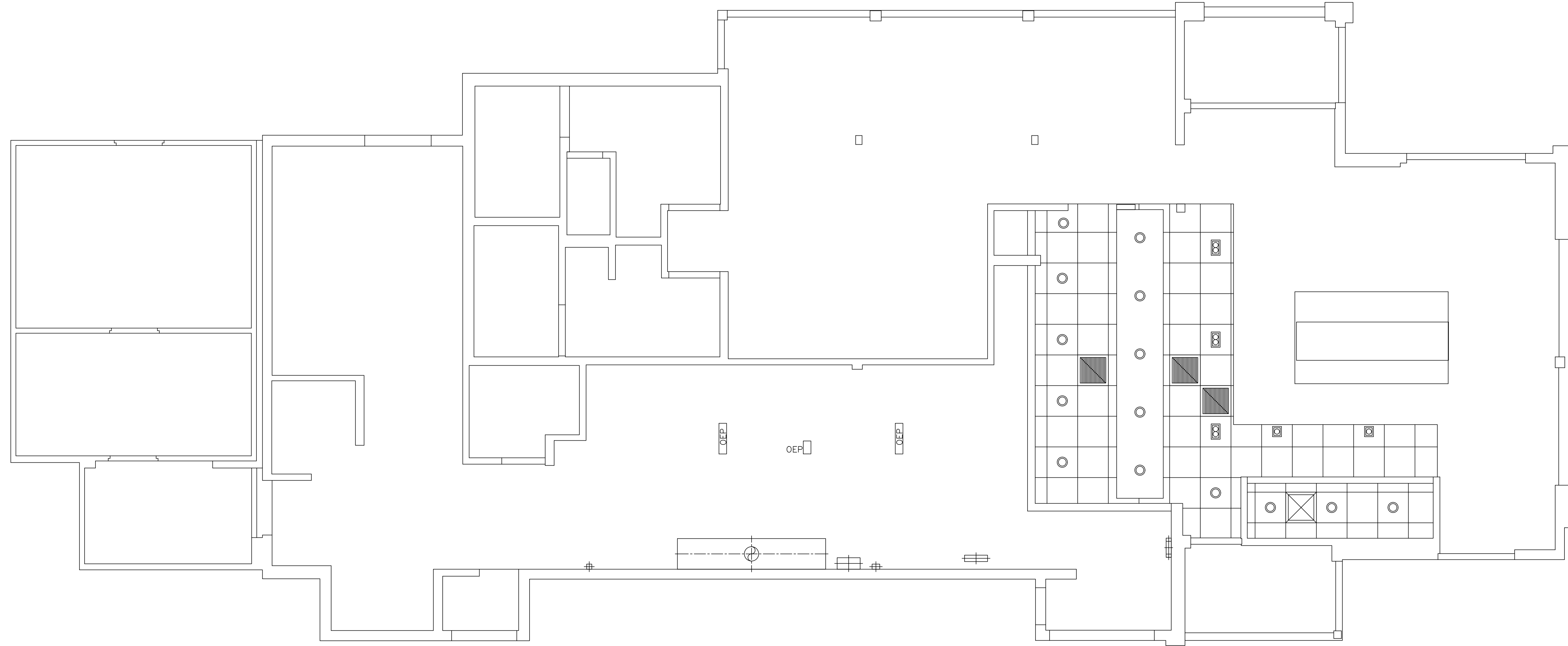
SHEET NUMBER
A1.0
EX. FLOOR PLAN



1 EXISTING FLOOR PLAN - LEVEL 1
SCALE: 1/4" = 1'-0"
TOTAL SQ FT = 3,405
TOTAL SEATING = 61

Submittal Type - AS-BUILT

C:\Users\AsehabNoji\Desktop\015-0195 (13539) BKST\015-0195 (13539) CAD\Current\015-0195 (13539) As Built CAD BKST.dwg August 22, 2019 - 1:33pm AsehabNoji



1
A1.1 SCALE: 1/4" = 1'-0"

EXISTING REFLECTED CEILING PLAN

sevan
MULTI-SITE SOLUTIONS
DESIGN LLC.

Regional Office:
37704 Hills Tech Drive
Farmington Hills, MI 48331
Telephone: 734-307-4462

Corporate Office:
3025 Highland Parkway #850
Downers Grove, IL 60515
info@sevensolutions.com www.sevensolutions.com

SAFETY - INTEGRITY - SUSTAINABILITY

REVISIONS		
NO.	DATE	DESCRIPTION
-	-	-
-	-	-
-	-	-
-	-	-
-	-	-
-	-	-
-	-	-

SEAL

SEAL NOTE

PREPARED FOR

McDonald's USA LLC
 These drawings and specifications are the confidential and proprietary property of McDonald's USA, LLC and shall not be copied or reproduced without written authorization. The contract documents were prepared for use on this specific site in conjunction with its issue date and are not suitable for use on a different site or at a later time. Use of these drawings for reference or example on another project requires the services of properly licensed architects and engineers. Reproduction of the contract documents for reuse on another project is not authorized.

PROJECT DESCRIPTION
EXISTING CONDITIONS

PROJECT LOCATION
McDonald's
1001 S 1ST ST
HIAWATHA, KS 66434

SHEET TITLE
REFLECTED CEILING PLAN

SHEET MANAGEMENT
 PROJECT NO.: 015-0195
 DATE ISSUED: 08/22/2019
 DRAWN BY: NS
 REVIEWED BY: JA

NATIONAL STORE #
13539

SHEET NUMBER
A1.1
EX. RCP

Submittal Type - AS-BUILT

REVISIONS

NO.	DATE	DESCRIPTION

SEAL

SEAL NOTE

PREPARED FOR
McDonald's USA LLC

These drawings and specifications are the confidential and proprietary property of McDonald's USA, LLC and shall not be copied or reproduced without written authorization. The contract documents were prepared for use on this specific site in conjunction with its issue date and are not suitable for use on a different site or at a later time. Use of these drawings for reference or example on another project requires the services of properly licensed architects and engineers. Reproduction of the contract documents for reuse on another project is not authorized.

PROJECT DESCRIPTION
EXISTING CONDITIONS

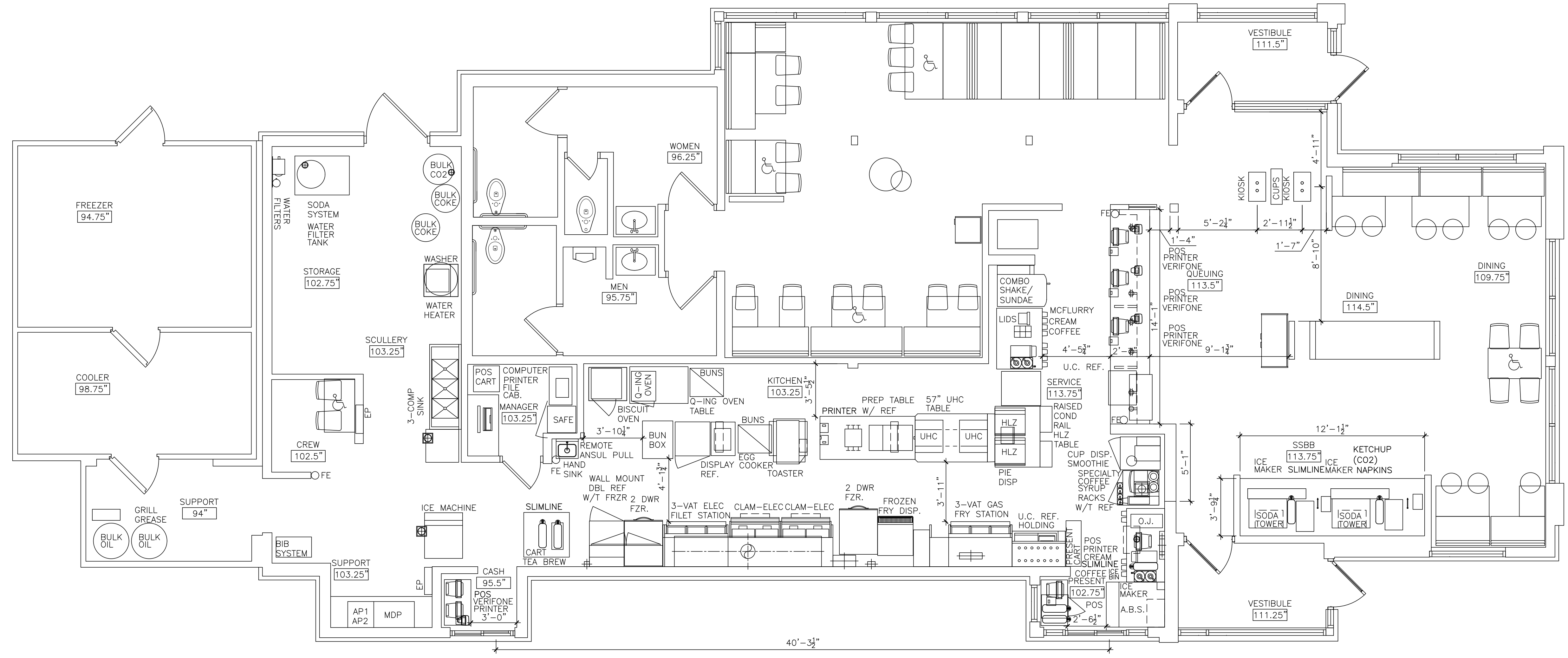
PROJECT LOCATION
**McDonald's
1001 S 1ST ST
HIAWATHA, KS 66434**

SHEET TITLE
**KITCHEN
EQUIPMENT PLAN**

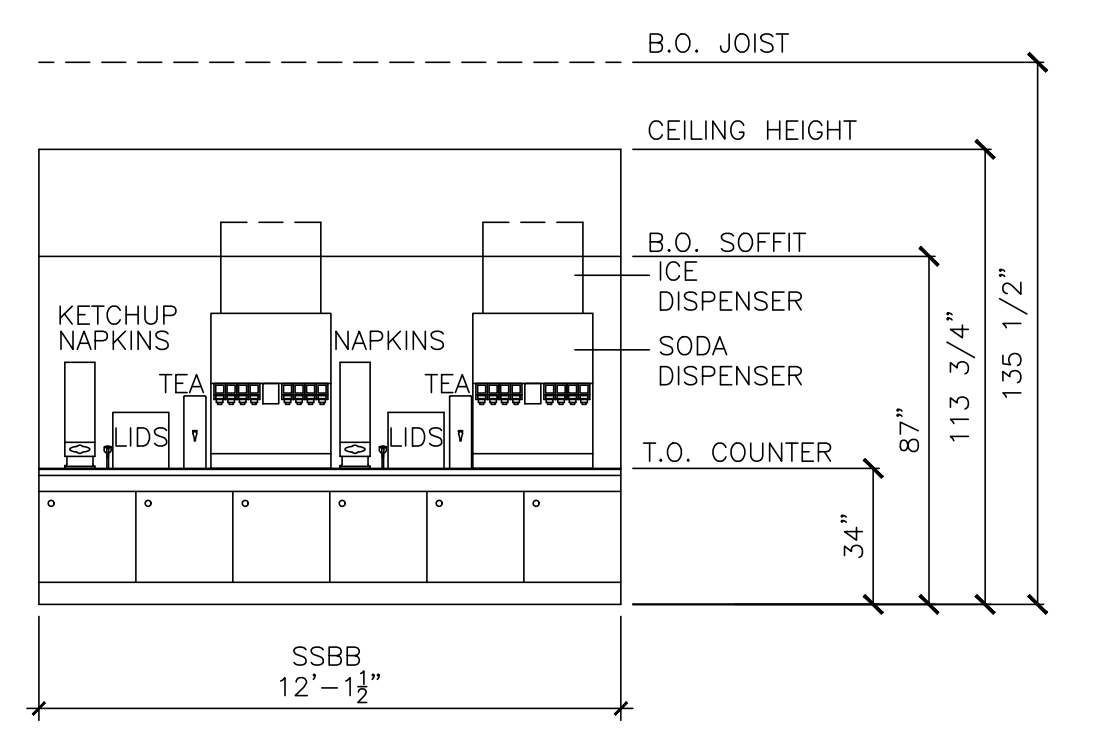
SHEET MANAGEMENT
PROJECT NO.: 015-0195
DATE ISSUED: 08/22/2019
DRAWN BY: NS
REVIEWED BY: JA

NATIONAL STORE #
13539

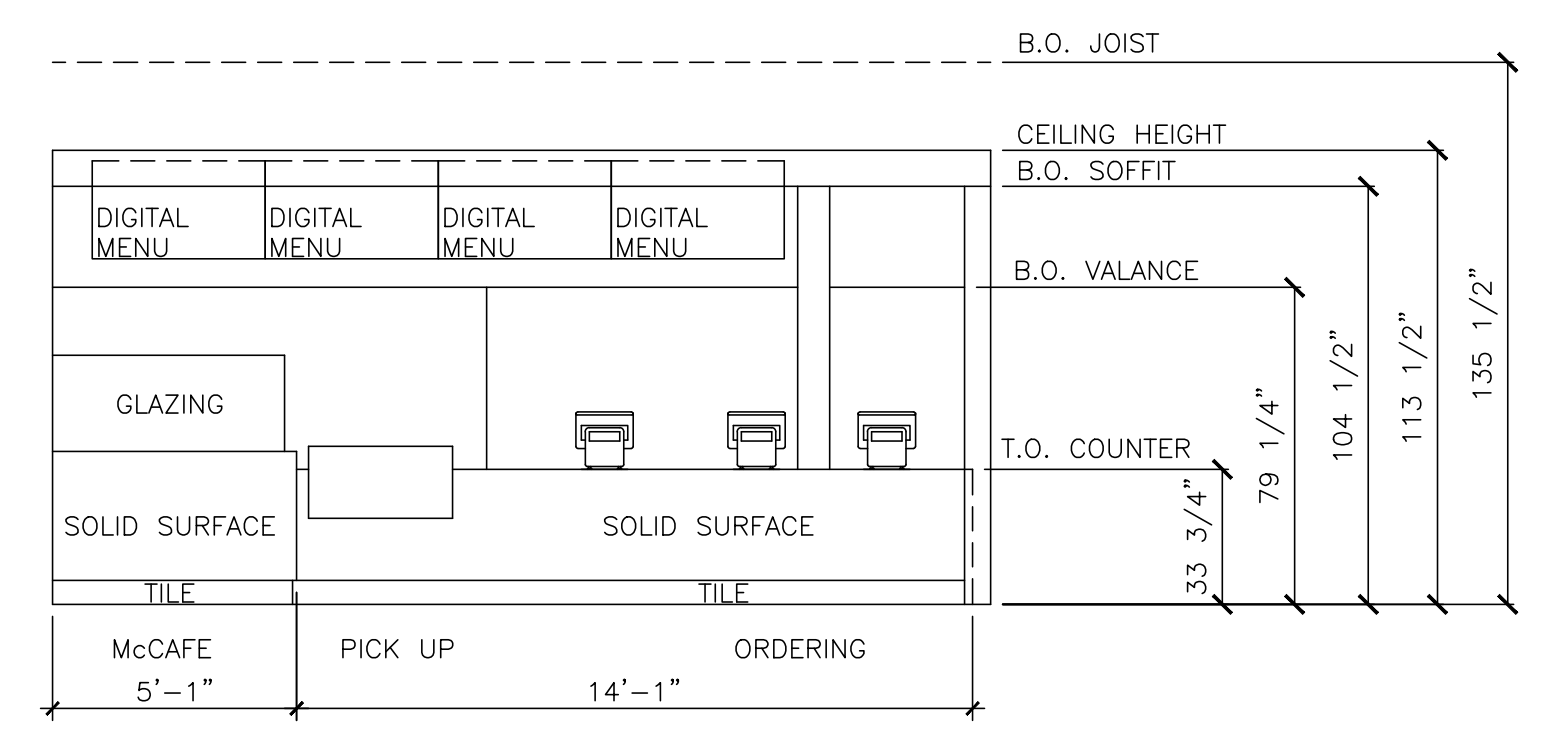
SHEET NUMBER
K1.0
EX. EQUIPMENT PLAN



1 EXISTING EQUIPMENT PLAN
SCALE: 1/4" = 1'-0"



2 EXISTING SSB COUNTER ELEVATION
SCALE: 1/4" = 1'-0"



3 EXISTING FRONT COUNTER ELEVATION
SCALE: 1/4" = 1'-0"